



**This unit offers anti-siphon protection.**

#### SPECIFICATIONS:

- Manufactured under one or more of the following patents: 3,208,715; 3,278,201; 5,590,679; 5,632,303; 6,142,172; 6,532,986 and patents pending
- **ASSE** Standard 1019 - Type C Listed
- **IAPMO** Listed, UPC®
- Not intended for continuous use

#### FEATURES:

- An internal resetting pressure reducing valve prevents the faucet casing tube from bursting in freezing conditions even if a hose is unintentionally left on.
- EPDM packing to prevent leaking
- Oval, powder-coated, die cast aluminum handle
- Stainless steel seat - eliminates wire draw
- Adjustable wall flange
- Standard "O" size seat washer
- Tee Key configuration - (extra charge)
- No-lead solder
- 3/4" male hose thread

**MAX PRESSURE** - 125 p.s.i.

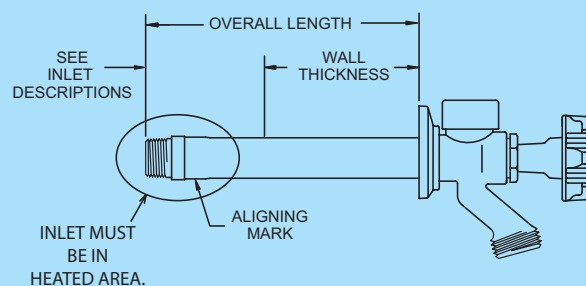
**MAX TEMPERATURE** - 120° F

#### INSTALLATION REQUIREMENTS:

- The faucet length used is to be comparable to what would be used with standard freezeless faucets.
- The inlet connection must be located in a heated area.
- The gap between the house and faucet must be sealed to prevent air leaks
- The faucet must be installed with a slight downward pitch toward the nozzle.
- Adequate insulation is required around the faucet, wall board and sill plate.

**Ask your Woodford representative about warranty details or visit [www.woodfordmfg.com](http://www.woodfordmfg.com).**

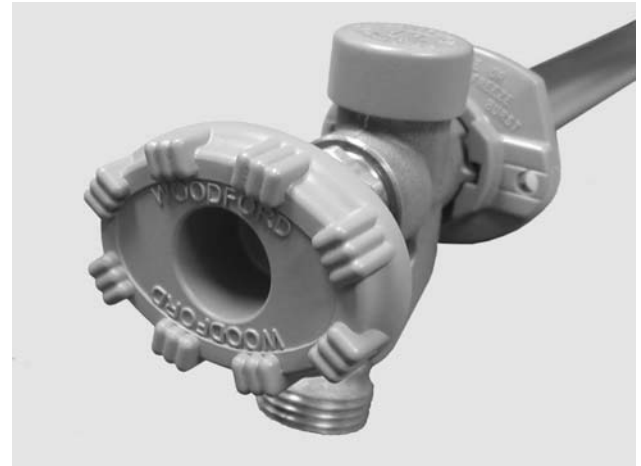
#### Rough-In Dimensions



WOODFORD



# Anti-Siphon Freezeless Wall Faucet Model 19



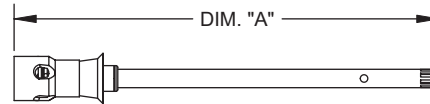
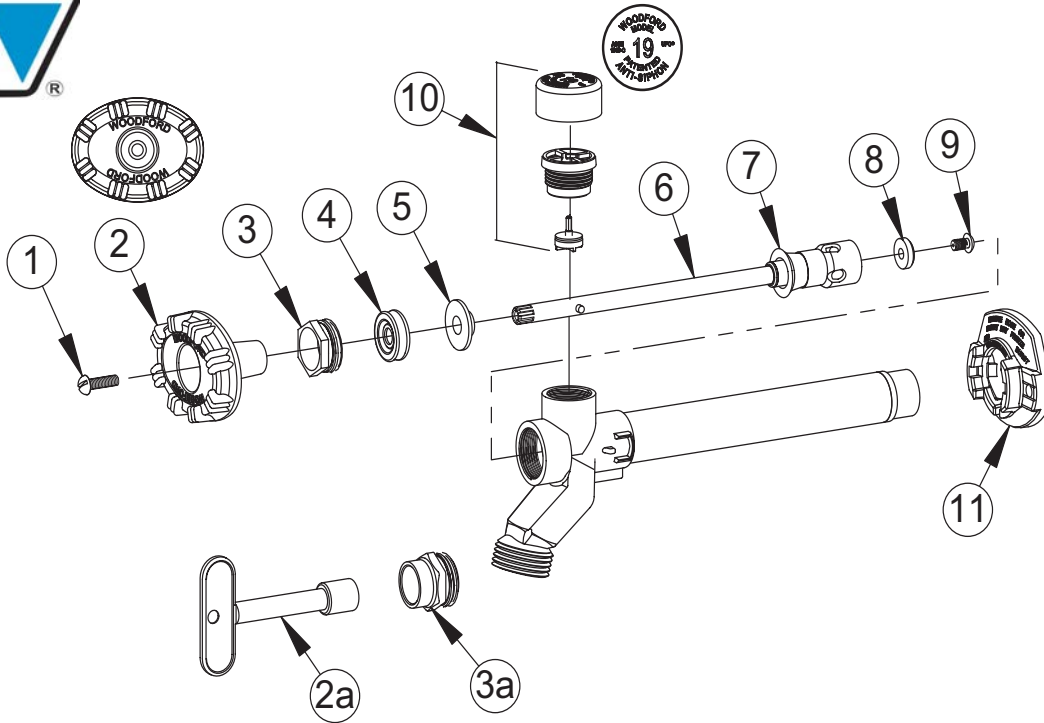
#### Inlet Descriptions

	<b>C Inlet</b> COMBINATION Copper Sweat Fitting 1/2" K, L or M Inside 3/4" M Only Outside
	<b>CP Inlet</b> COMBINATION 1/2" Male Pipe Thread 1/2" Female Sweat
	<b>CP3 Inlet</b> COMBINATION 3/4" Male Pipe Thread 3/4" Female Sweat
	<b>P Inlet</b> COMBINATION 1/2" Female Pipe Thread 3/4" Male Pipe Thread
	<b>PX Inlet</b> 1/2" PEX Tube Fitting
	<b>W Inlet</b> 1/2" Wirsbo® Tube Fitting
	<b>R Inlet</b> 1/2" Rehau® Tube Fitting
	<b>CM Inlet</b> COMBINATION 1/2" Compression Fitting 1/2" Copper Sweat Fitting

**When ordering, specify model, inlet and wall thickness.**



**WOODFORD**



**MODEL 19 PARTS LIST**

ITEM	PART#	DESCRIPTION
1.	30002	Handle Screw
2.	30559	Oval Wheel Handle - Powder Coated Die Cast Aluminum
2a.	50012	Tee Key (Optional)
3.	30059	Packing Nut
3a.	30512	Packing Nut w/deep stem guard (Optional)
4.	30560	EPDM Packing
5.	30421	Packing Support Washer
6.	RK-PRV	Valve Stem Assembly (See chart at right)
7.	30459	Check Valve
8.	30008	Valve Seat Rubber
9.	30804	Retainer Screw
10.	35401	Vacuum Breaker Float Kit - Model 19
11.	30098	Adjustable Flange
RK-19		Repair Kit (Includes items 1-5, 7-10)

RK-PRV DIM. "A"	
Wall Thickness	Length
4	5 7/8"
6	7 7/8"
8	9 7/8"
10	11 7/8"
12	13 7/8"
14	15 7/8"
16	17 7/8"
18	19 7/8"
20	21 7/8"
22	23 7/8"
24	25 7/8"

Model 19	4	6	8	10	12	14	16	18	20	22	24
Shipping Wt. Ea. Lbs.	1.2	1.3	1.4	1.5	1.6	1.7	1.8	1.9	2	2.1	2.2

*For more information contact...*

**WOODFORD MANUFACTURING COMPANY**

2121 Waynoka Road, Colorado Springs, Colorado 80915 • Phone: (800) 621-6032 • Fax: (800) 765-4115  
 To view our complete product line visit: [www.woodfordmfg.com](http://www.woodfordmfg.com) or email: [sales@woodfordmfg.com](mailto:sales@woodfordmfg.com)  
 A Division Of WCM Industries, Inc.