




This unit offers anti-siphon protection.

The Woodford Model 17 drains as handle is shut off and hose is removed. This faucet is designed for residential outside water service applications and is not intended for continuous use applications.

The Model 17CC is designed for use in non-freeze areas and fits within 2" x 4" stud wall. The 17CC is available with C Inlet only.

SPECIFICATIONS:

- ASSE Standard 1019 - Type C Approved. 
- BOCA-ES - See research report number 96-69.
- IAPMO Listed

NOZZLE - 3/4" male hose thread.

PERMANENT STAINLESS STEEL SEAT - Will not wire draw.

EPDM PACKING - To prevent leaking

VALVE OPERATING THREADS - Full circle threads on valve body and retainer.

NO LEAD SOLDER - All solder joints.

SEAT WASHER - Standard "O" size.

ADJUSTABLE FLANGE, HANDLE, VACUUM BREAKER CAP & BODY - Polycarbonate.

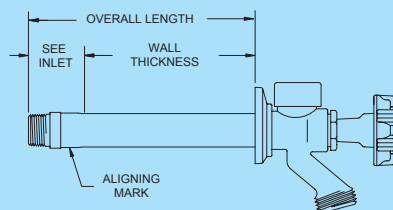
Handle Options: Powder coated, die cast aluminum Removable Tee Key (at extra cost).

MAX PRESSURE - 125 p.s.i.

MAX TEMPERATURE - 120° F

WARNING - Faucet must be installed with downward pitch toward nozzle and hose must be removed in freezing weather or faucet may freeze and burst. Not designed for continuous use.

Rough-In Dimensions



Wall Thickness (inches)

CC	4	6	8	10	12	14	16	18	20	22	24	
	1.0	1.2	1.3	1.4	1.5	1.6	1.7	1.8	1.9	2	2.1	2.2

Shipping Wt. Ea. Lbs.

*Overall Length Dimension: Add wall thickness and inlet option length shown in chart above. Overall length for 17CC is 2 7/8.

When ordering, specify model, inlet and wall thickness.

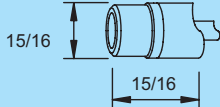
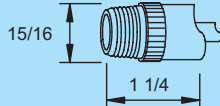
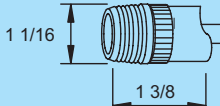
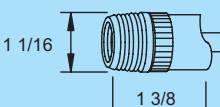
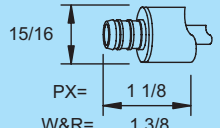
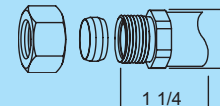


Anti-Siphon Freezeless Wall Faucet Model 17 / 17CC

For Non-Freeze
Areas ONLY

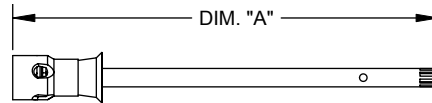
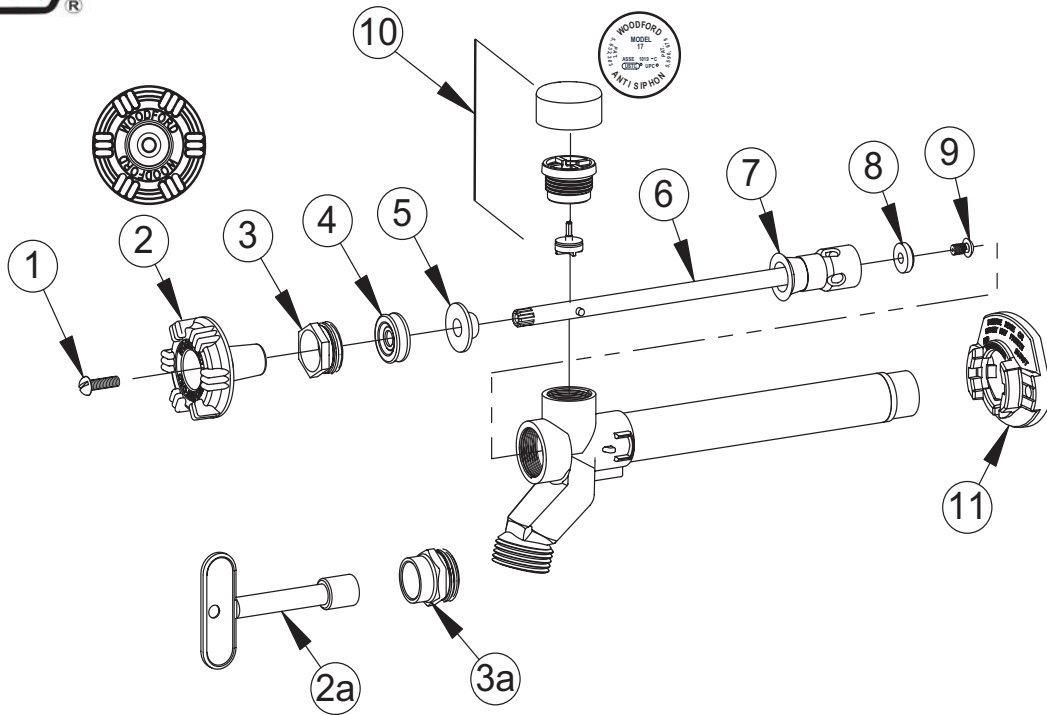


Inlet Descriptions

	C Inlet COMBINATION Copper Sweat Fitting 1/2" K, L or M Inside 3/4" M Only Outside
	CP Inlet COMBINATION 1/2" Male Pipe Thread 1/2" Female Sweat
	CP3 Inlet COMBINATION 3/4" Male Pipe Thread 3/4" Female Sweat
	P Inlet COMBINATION 1/2" Female Pipe Thread 3/4" Male Pipe Thread
	PX Inlet 1/2" PEX Tube Fitting W Inlet 1/2" Wirsbo Tube Fitting R Inlet 1/2" Rehau Tube Fitting
	CM Inlet COMBINATION 1/2" Compression Fitting 1/2" Copper Sweat Fitting



WOODFORD



MODEL 17 PARTS LIST

ITEM	PART#	DESCRIPTION
1.	30002	Handle Screw
2.	30099	Wheel Handle
2a.	50012	Tee Key (Optional)
3.	30059	Packing Nut
3a.	30512	Packing Nut w/deep stem guard (Optional)
4.	30560	EPDM Packing
5.	30421	Packing Support Washer
6.	35XXX	Valve Stem Assembly (Includes items 6, 7, 8, & 9) (See chart at right)
7.	30459	Check Valve
8.	30008	Valve Seat Rubber
9.	30009	Retainer Screw
10.	35301	Vacuum Breaker Float Kit
11.	30098	Adjustable Flange
RK-17	Repair Kit (Includes items 1-5, 7-10)	

VALVE STEM ASSEMBLY DIM. "A"		
Wall Thickness	Length	Part No.
CC (1 3/4)	3 5/8"	35942
4	5 7/8"	35720
6	7 7/8"	35721
8	9 7/8"	35722
10	11 7/8"	35723
12	13 7/8"	35724
14	15 7/8"	35725
16	17 7/8"	35736
18	19 7/8"	35726
20	21 7/8"	35737
22	23 7/8"	35738
24	25 7/8"	35727

For more information contact...

WOODFORD MANUFACTURING COMPANY

2121 Waynoka Road, Colorado Springs, Colorado 80915 • Phone: (800) 621-6032 • Fax: (800) 765-4115
 To view our complete product line visit: www.woodfordmfg.com or email: sales@woodfordmfg.com
 A Division Of WCM Industries, Inc.