

This unit offers no anti-siphon or backflow protection.

The Woodford Model 14 drains as handle is shut off and hose is removed. This faucet is designed for residential outside water service applications and is not intended for continuous use.

The Model 14CC is designed for use in non-freeze areas and fits within 2" x 4" stud wall. The 14CC is available with C Inlet only.

SPECIFICATIONS:

MODEL 14 - Approved under Canadian Standard Association.

NOZZLE - 3/4" male hose thread.

PERMANENT STAINLESS STEEL SEAT - Will not wire draw.

EPDM PACKING - To prevent leaking

VALVE OPERATING THREADS - Full circle threads on valve body and retainer.

NO LEAD SOLDER - All solder joints.

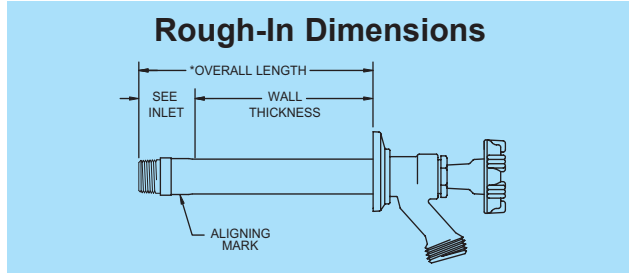
SEAT WASHER - Standard "O" size.

ADJUSTABLE FLANGE, HANDLE, VACUUM BREAKER CAP & BODY - Polycarbonate.
 Handle Options: Metal Wheel Handle.
 Removable Tee Key (at extra cost).

MAX PRESSURE - 125 p.s.i.

MAX TEMPERATURE - 120° F

WARNING - Faucet must be installed with downward pitch toward nozzle and hose must be removed in freezing weather or faucet may freeze and burst. *Not designed for continuous use.*



Wall Thickness (inches)	CC	4	6	8	10	12	14	16	18	20	22	24
Shipping Wt. Ea. Lbs.	1.0	1.2	1.3	1.4	1.5	1.6	1.7	1.8	1.9	2	2.1	2.2

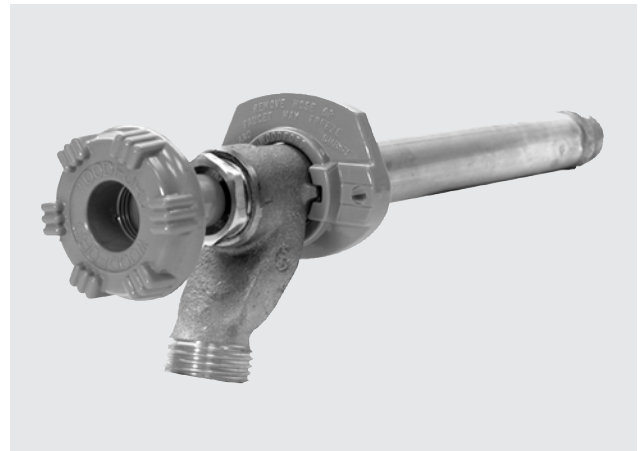
*Overall Length Dimension: Add wall thickness and inlet option length shown in chart above. Overall length for 14CC is 2 7/8.

When ordering, specify model, inlet and wall thickness.

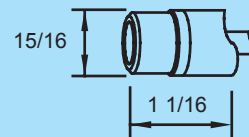


Freezeless Wall Faucet Model 14 / 14CC

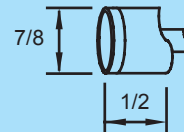
For Non-Freeze Areas ONLY



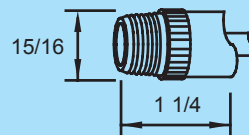
Inlet Descriptions



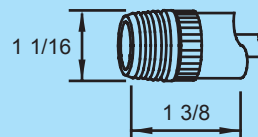
C Inlet COMBINATION
 Copper Sweat Fitting
 1/2" K, L or M Inside
 3/4" M Only Outside



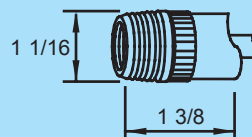
C1 Inlet
 1/2" Female Sweat Fitting



CP Inlet COMBINATION
 1/2" Male Pipe Thread
 1/2" Female Sweat

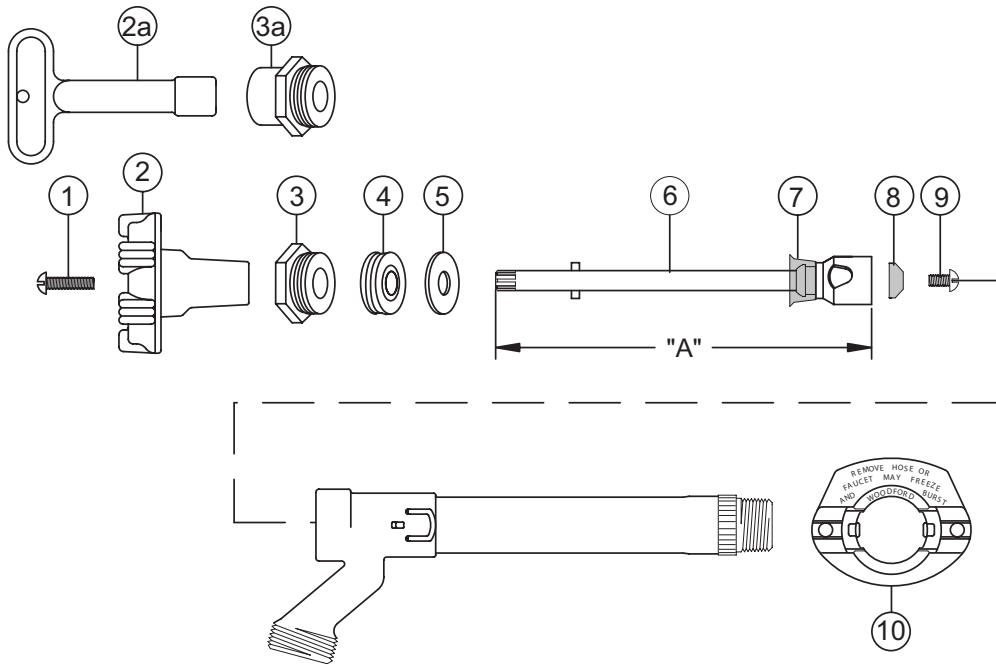


CP3 Inlet COMBINATION
 3/4" Male Pipe Thread
 3/4" Female Sweat



P Inlet COMBINATION
 1/2" Female Pipe Thread
 3/4" Male Pipe Thread

WOODFORD



MODEL 14 PARTS LIST

ITEM	PART#	DESCRIPTION
1.	30002	Handle Screw
2.	30099	Wheel Handle
2a.	50012	Tee Key (Optional)
3.	30059	Packing Nut
3a.	30512	Packing Nut w/deep stem guard (Optional)
4.	30560	EPDM Packing
5.	30006	Packing Support Washer
6.	35XXX	Valve Stem Assembly (Includes items 7, 8, &9)
7.	30459	Check Valve
8.	30008	Valve Seat Rubber
9.	30009	Retainer Screw
10.	30098	Adjustable Flange
	RK-14	REPAIR KIT (Includes items 1-5, 8-9)

VALVE STEM ASSEMBLY DIM. "A"		
Wall Thickness	Length	Part No.
CC (1 3/4)	3 5/8"	35942
4	5 7/8"	35720
6	7 7/8"	35721
8	9 7/8"	35722
10	11 7/8"	35723
12	13 7/8"	35724
14	15 7/8"	35725
16	17 7/8"	35736
18	19 7/8"	35726
20	21 7/8"	35737
22	23 7/8"	35738
24	25 7/8"	35727

For more information contact...

WOODFORD MANUFACTURING COMPANY

2121 Waynoka Road, Colorado Springs, Colorado 80915 • Phone: (800) 621-6032 • Fax: (800) 765-4115

To view our complete product line visit: www.woodfordmfg.com or email: sales@woodfordmfg.com

A Division Of WCM Industries, Inc.