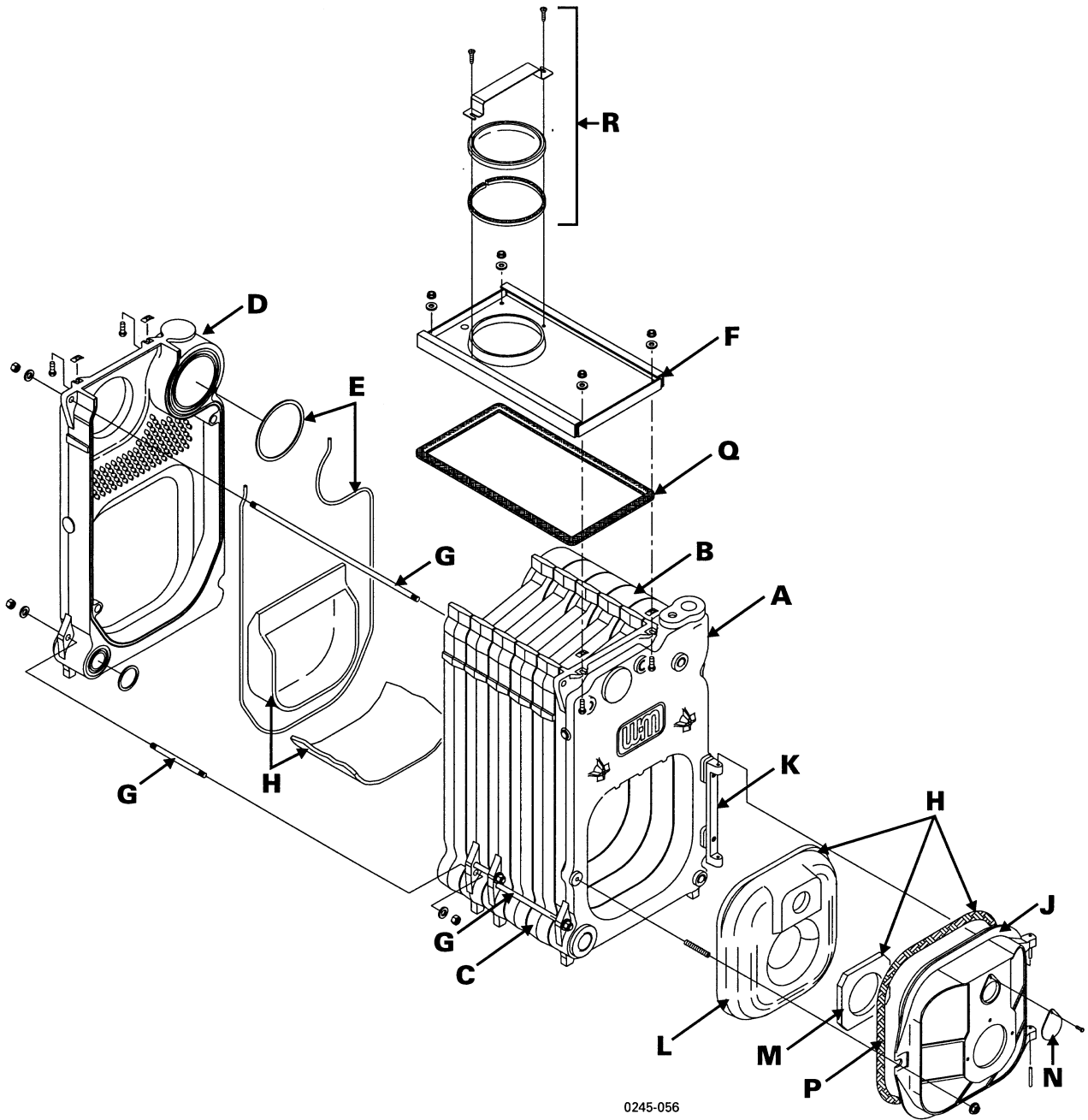


WGO Series 3 Section Assembly



0245-056

OIL

WGO Series 3 Section Assembly

| Fig. No. | Part No. | Description | Casting No. | Notes | Boiler Size | | | | | | | | | |
|----------|-------------|--|-------------|-------|-------------|---|---|---|---|---|---|---|---|----|
| | | | | | 2 | 3 | 4 | 5 | 6 | 7 | 8 | 9 | | |
| A | 316-700-270 | FRONT SECTION, w/envelope, fits Series 1, 2, & 3 | 7012 | | 1 | 1 | 1 | 1 | 1 | 1 | 1 | 1 | 1 | 1 |
| B | 316-700-065 | INTERMEDIATE SECTION, NARROW | 7015 | | 1 | | 2 | 3 | 4 | 3 | 4 | 5 | | |
| | 316-700-075 | INTERMEDIATE SECTION, WIDE | 7010 | | | 1 | | | | | | | | |
| C | 316-700-070 | INTERMEDIATE SECTION, w/DRAW ROD LUGS | 7016 | | | | | | | 2 | 2 | 2 | | |
| D | 316-700-265 | BACK SECTION w/2 1/2" SUPPLY & 2 1/2" RETURN | 7017 | | 1 | 1 | 1 | 1 | 1 | 1 | 1 | 1 | 1 | 1 |
| | 386-700-851 | INTERMEDIATE SECTION REPLACEMENT KIT (Includes: seals, rope and adhesive for one joint) | - | | - | - | 1 | 2 | 3 | 4 | 5 | 6 | | |
| | 386-700-852 | REAR SECTION REPLACEMENT KIT (Includes: seals, rope, adhesive and collector hood fasteners for front & rear sections) | - | | 1 | 1 | 1 | 1 | 1 | 1 | 1 | 1 | 1 | 1 |
| | 386-700-855 | FRONT SECTION REPLACEMENT KIT (Includes: seals, rope, adhesive and collector hood fasteners for front & rear sections) | - | | 1 | 1 | 1 | 1 | 1 | 1 | 1 | 1 | 1 | 1 |
| | 386-700-650 | REPLACEMENT SECTION ASSEMBLY COMPLETE w/JACKET | - | | 1 | | | | | | | | | |
| | 386-700-651 | REPLACEMENT SECTION ASSEMBLY COMPLETE w/JACKET | - | | | 1 | | | | | | | | |
| | 386-700-652 | REPLACEMENT SECTION ASSEMBLY COMPLETE w/JACKET | - | | | | 1 | | | | | | | |
| | 386-700-653 | REPLACEMENT SECTION ASSEMBLY COMPLETE w/JACKET | - | | | | | 1 | | | | | | |
| | 386-700-654 | REPLACEMENT SECTION ASSEMBLY COMPLETE w/JACKET | - | | | | | | 1 | | | | | |
| | 386-700-655 | REPLACEMENT SECTION ASSEMBLY L/JACKET | - | | | | | | | 1 | | | | |
| | 386-700-656 | REPLACEMENT SECTION ASSEMBLY L/JACKET | - | | | | | | | | 1 | | | |
| | 386-700-657 | REPLACEMENT SECTION ASSEMBLY L/JACKET | - | | | | | | | | | | 1 | |
| F | 386-700-336 | COLLECTOR HOOD KIT | - | | 1 | | | | | | | | | |
| | 386-700-337 | COLLECTOR HOOD KIT | - | | | 1 | 1 | | | | | | | |
| | 386-700-338 | COLLECTOR HOOD KIT | - | | | | | 1 | | | | | | |
| | 386-700-339 | COLLECTOR HOOD KIT | - | | | | | | 1 | | | | | |
| | 450-020-188 | COLLECTOR HOOD KIT | - | | | | | | | 1 | | | | |
| | 450-020-189 | COLLECTOR HOOD KIT | - | | | | | | | | 1 | | | |
| | 450-020-190 | COLLECTOR HOOD KIT | - | | | | | | | | | 1 | | |
| G | 560-234-464 | TIE ROD 1/2" X 5 1/2" | - | | 2 | | | | | | 2 | 2 | | |
| | 560-234-491 | TIE ROD 1/2" X 10 3/4" | - | | 4 | | | | | | 2 | | | |
| | 560-234-492 | TIE ROD 1/2" X 12C | - | | 2 | | | | | | | | | |
| | 560-234-470 | TIE ROD 1/2" X 14" | - | | | 4 | 4 | | | | 2 | 2 | | |
| | 560-234-495 | TIE ROD 1/2" X 15" | - | | 2 | | | | | | | | | |
| | 560-234-472 | TIE ROD 1/2" X 17" | - | | 4 | | | | | | | | | |
| | 560-234-534 | TIE ROD 1/2" X 20" | - | | 4 | | | | | | | | | |
| | 560-234-538 | TIE ROD 1/2" X 23 1/4" | - | | | | | | | | 2 | | | |
| | 560-234-542 | TIE ROD 1/2" X 26 3/8" | - | | 2 | | | | | | | | | |
| | 560-234-497 | TIE ROD 1/2" X 29 1/2" | - | | 2 | | | | | | | | | |
| | 561-928-221 | NUT, REGULAR HEX, 1/2" (2 required per rod) | - | | 8 | 8 | 8 | 8 | 8 | 8 | 8 | 8 | 8 | 16 |
| | 562-248-668 | WASHER, MEDIUM SPLIT PLAIN LOCK, 1/2" (1 required per rod) | - | | 4 | 4 | 4 | 4 | 4 | 4 | 4 | 4 | 4 | 8 |
| H | 386-700-355 | COMBUSTION CHAMBER KIT (Includes: rear & front refractory, blanket & water glass) | - | | 1 | 1 | 1 | 1 | 1 | 1 | 1 | 1 | 1 | 1 |
| | 386-700-358 | BURNER MOUNTING DOOR ASSEMBLY (Includes: door, observation port, rope, insulation & pins) | - | | 1 | 1 | 1 | 1 | 1 | 1 | 1 | 1 | 1 | 1 |
| J | 330-054-302 | BURNER MOUNTING DOOR NOT FOR SALE (you must purchase 386-700-358 Burner Door Assembly) | 7070 | | 1 | 1 | 1 | 1 | 1 | 1 | 1 | 1 | 1 | 1 |
| K | 330-054-300 | DOOR HINGE | 7054 | | 1 | 1 | 1 | 1 | 1 | 1 | 1 | 1 | 1 | 1 |
| L | 386-700-359 | DOOR REFRACTORY | - | | 1 | 1 | 1 | 1 | 1 | 1 | 1 | 1 | 1 | 1 |
| M | 591-222-115 | DOOR REFRACTORY BLANKET | - | | 1 | 1 | 1 | 1 | 1 | 1 | 1 | 1 | 1 | 1 |
| N | 460-039-867 | OBSERVATION PORT SHUTTER | - | | 1 | 1 | 1 | 1 | 1 | 1 | 1 | 1 | 1 | 1 |
| P | 590-735-104 | DOOR SEAL ROPE, 55" | - | | 1 | 1 | 1 | 1 | 1 | 1 | 1 | 1 | 1 | 1 |
| Q | 590-735-109 | GLASS ROPE, 3/8" FOR COLLECTOR HOOD, 7' | - | | 1 | 1 | 1 | 1 | 1 | 1 | 1 | 1 | 1 | 1 |
| R | 386-700-344 | FLUE CAP KIT | - | | 1 | 1 | 1 | 1 | 1 | 1 | 1 | 1 | 1 | 1 |
| | 591-706-214 | FLUE BRUSH | - | | 1 | 1 | 1 | 1 | 1 | 1 | 1 | 1 | 1 | 1 |
| | 592-800-007 | 6" Top Seal | - | | | | | | | | | | | |
| | 592-800-010 | 3" Bottom Seal | - | | | | | | | | | | | |