

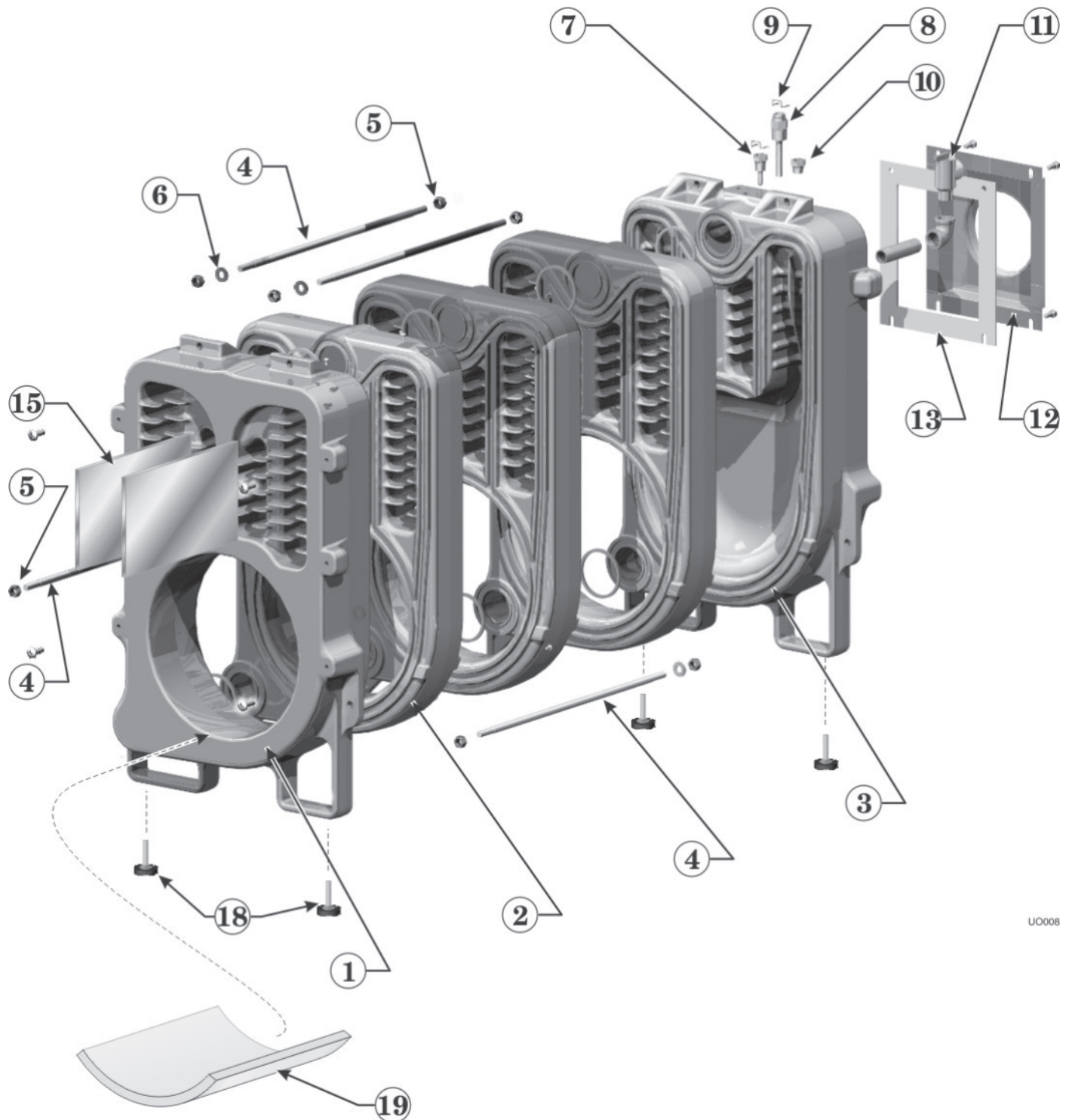
## Appendix — Replacement parts *(continued)*

### Boiler section assembly parts

Item	Description	Part Number
1	Boiler front section	316-900-200
2	Boiler intermediate section	316-900-210
3	Boiler back section	316-900-220
4	Tie rods (4 required)	UO-3 UO-4 UO-5 560-234-468 560-234-472 560-234-477
5	Nuts (8 required)	561-928-221
6	Washers (4 required)	562-248-668
7	P/T gauge temperature sensor well	592-300-025
8	Limit control sensor well	592-300-006
9	Mounting clip for P/T gauge and limit well	512-400-001
10	P/T gauge pressure sensor check valve	512-400-000
11	Boiler relief valve	511-546-920
12	Flue collar	446-900-000
13	Flue collar gasket	590-318-028
14	Flue collar replacement Kit (flue collar plate, gasket, (4) bolts)	386-902-002
15	Flueway baffles (for UO-3 1.0 gph input only) — (2) required	452-800-455
16	Front/Intermediate section replacement kit (includes seals & rope)	386-902-004
17	Back section replacement kit (includes seals, rope, flue gasket)	386-902-003
18	Leveling legs (4)	386-902-013
19	UO-3 0.80 GPH ONLY combustion chamber floor blanket	591-221-287
20	UO-3 0.80 GPH ONLY low firing rate kit (Not shown) (includes blanket, water glass, nozzle)	386-902-007

## Appendix — Replacement parts *(continued)*

### Boiler section assembly parts



U0008

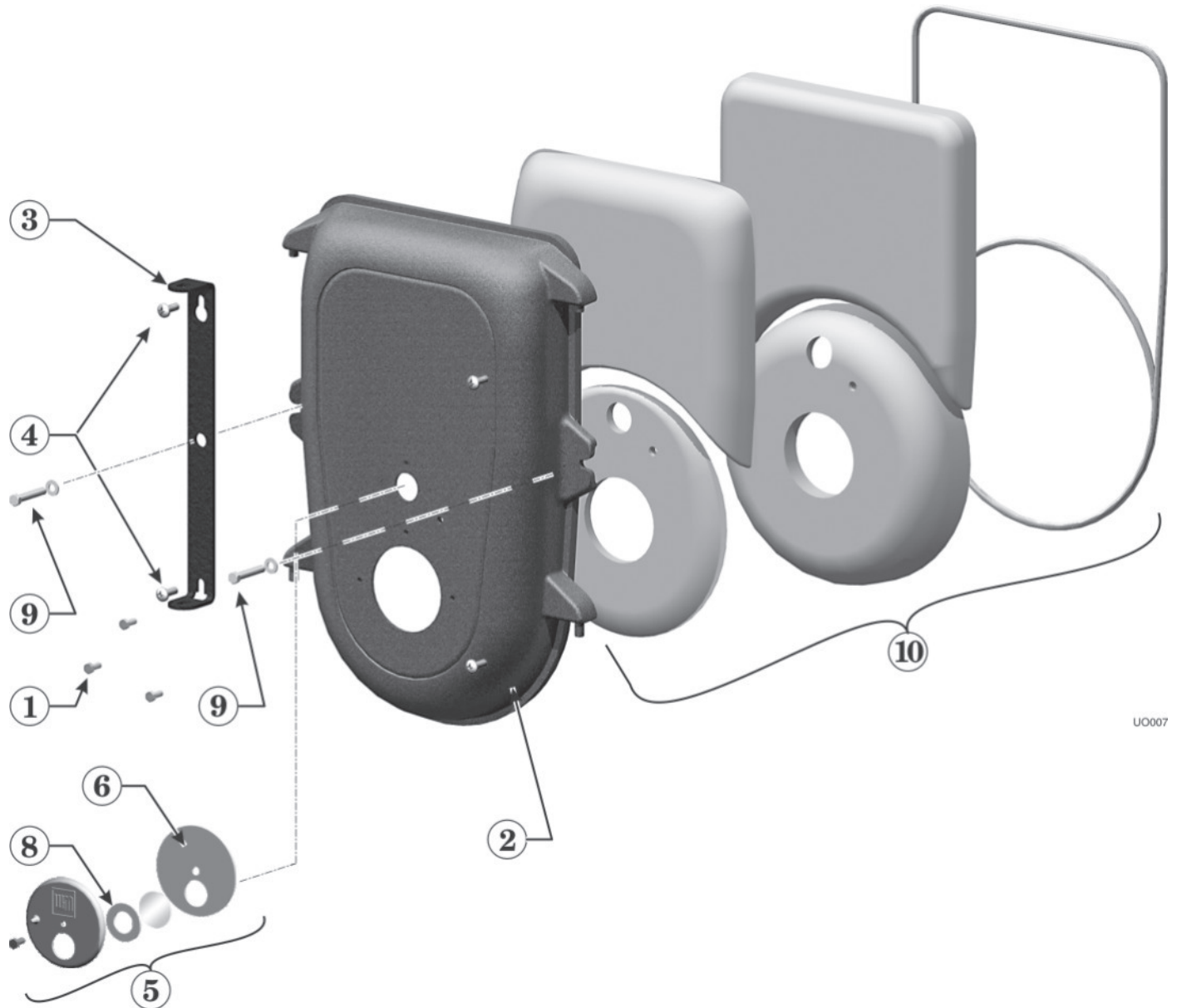
## Appendix — Replacement parts *(continued)*

### Burner door parts

Item	Description	Part Number
1	Burner flange bolts (3) each, 5/16"-18 x 3/4" Hex HD SS	Purchase locally
2	Burner door	330-054-308
3	Burner door hinge bracket	466-900-000
4	Hinge bracket screws (2 required), 3/8"-16 x 1	Purchase locally
5	Observation port assembly (includes observation port, bolt, observation port gasket, sight glass gasket, sight glass, water glass)	386-902-000
6	Observation port gasket (requires water glass adhesive)	590-318-027
7	Water glass for observation port gasket (Not shown)	591-632-612
8	Sight glass gasket	590-317-580
9	Burner door retainer bolts and washers (2) each, 3/8"-16 x 2" Hex HD ZP	Purchase locally
10	Burner door insulation kit (includes refractories, insulation blankets, & rope)	386-902-001

## Appendix — Replacement parts *(continued)*

### Burner door parts



U0007

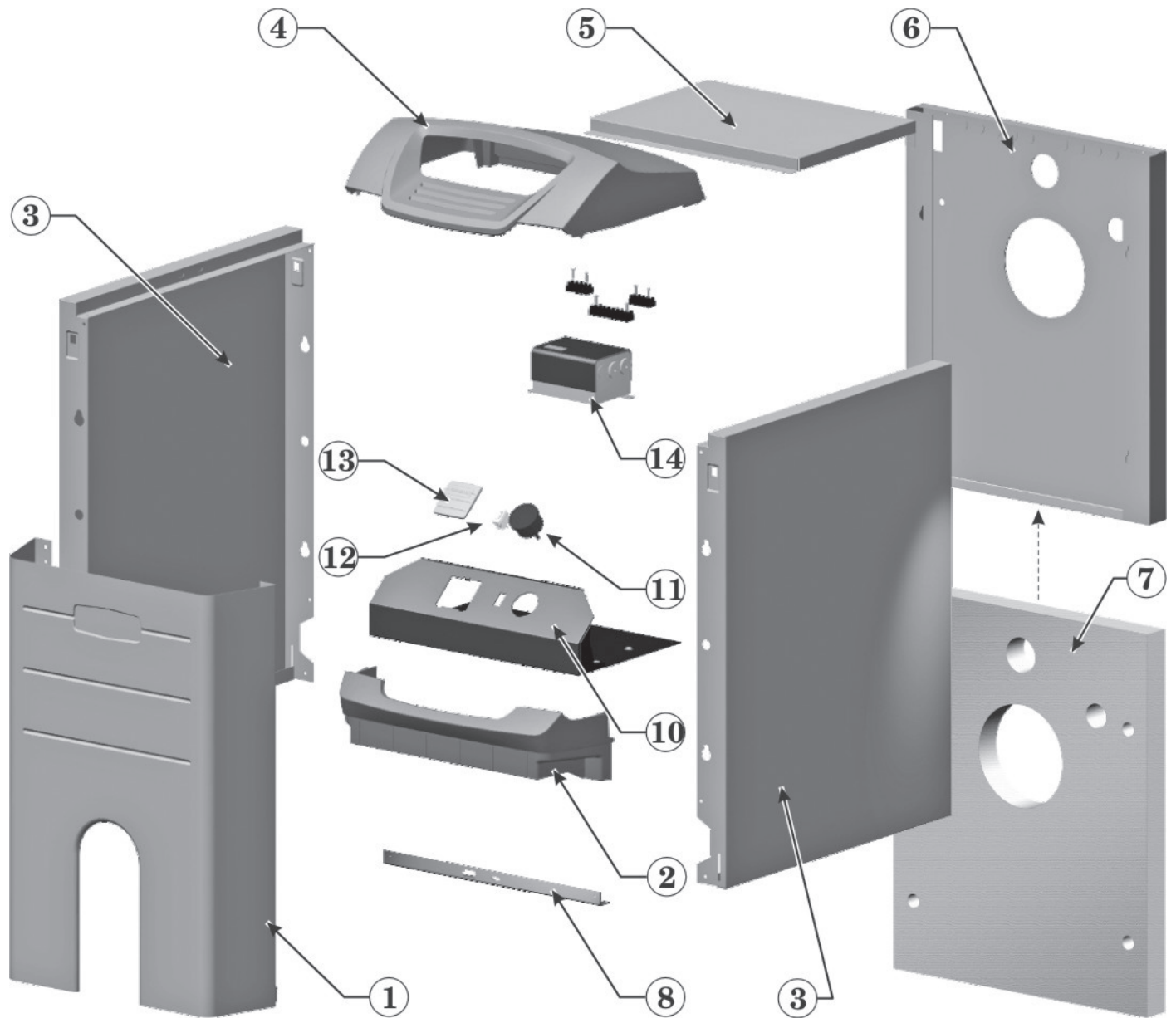
## Appendix — Replacement parts *(continued)*

### Jacket and control parts

Item	Description	Part Number
1	Jacket front panel assembly (includes sheet metal, plastic, striker)	386-902-005
2	Jacket front panel plastic	595-000-009
3	Jacket side panel (left and right sides are the same)	UO-3 426-900-002 UO-4 426-900-003 UO-5 426-900-004
4	Control Pod cover	595-000-011
5	Jacket top panel	UO-3 426-900-005 UO-4 426-900-006 UO-5 426-900-007
6	Jacket rear panel (if required order insulation below)	426-900-001
7	Jacket rear panel insulation	591-222-181
8	Jacket crosstie	426-900-008
9	Boiler insulation (Not shown)	UO-3 591-222-178 UO-4 591-222-179 UO-5 591-222-180
10	Control tray assembly (includes tray, limit control, terminal strips, P/T gauge, ON/OFF switch, wiring, labels)	386-902-008
11	Pressure/Temperature gauge	510-218-052
12	ON/OFF switch	511-624-645
13	Weil-McLain logo plate	550-404-306
14	High limit control, Honeywell L7248C-1030	386-902-006
15	Wire harness (Not shown)	386-902-011
16	Barometric draft control (Not shown)	510-512-270
17	Limit control sensor (Not shown)	511-724-291

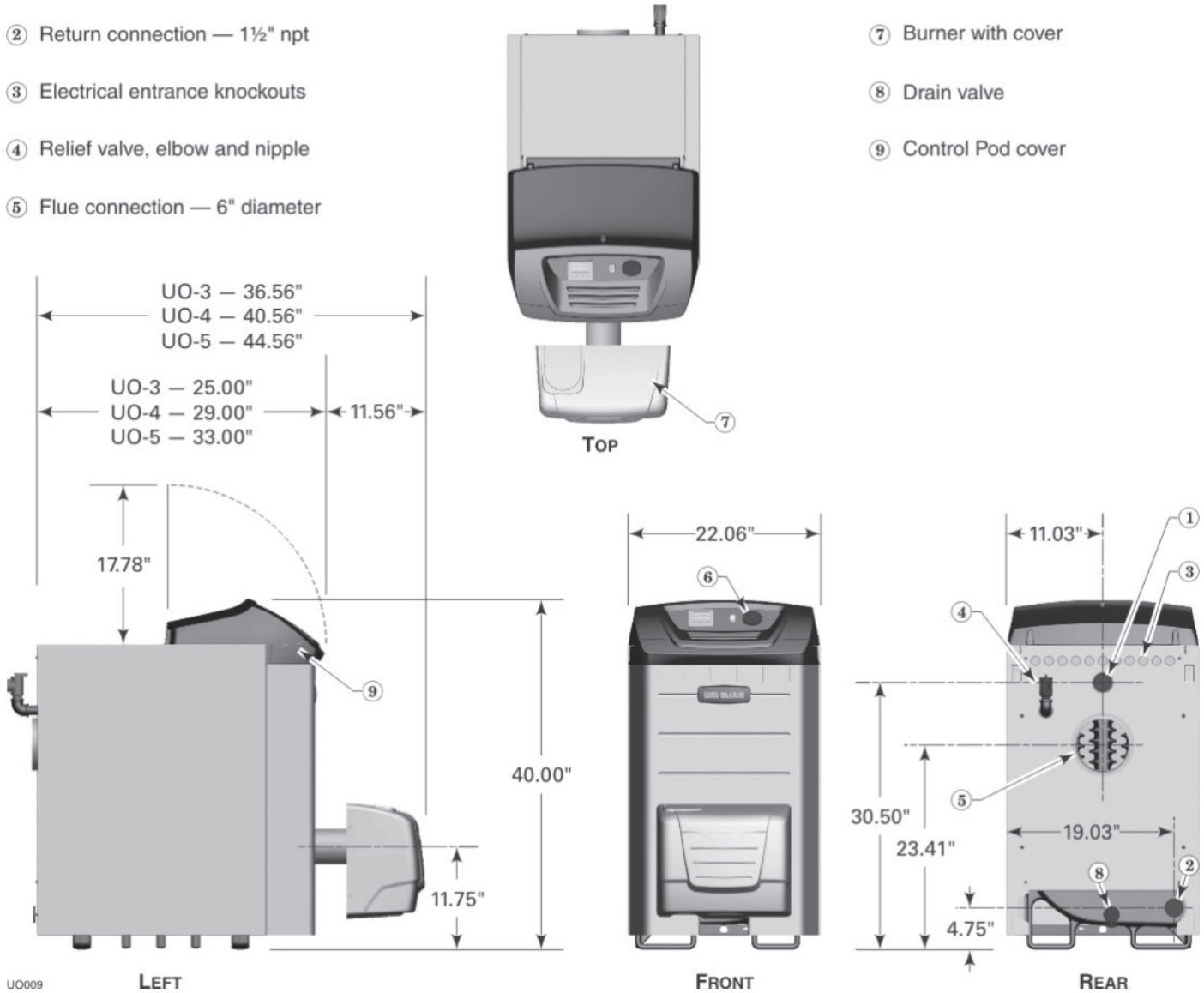
## Appendix — Replacement parts *(continued)*

### Jacket and control parts



# Appendix — Dimensions

- ① Supply connection — 1½" npt      **ALL DIMENSIONS IN INCHES**      ⑥ Pressure/temperature gauge
- ② Return connection — 1½" npt
- ③ Electrical entrance knockouts
- ④ Relief valve, elbow and nipple
- ⑤ Flue connection — 6" diameter
- ⑦ Burner with cover
- ⑧ Drain valve
- ⑨ Control Pod cover



- Notes**
1. Boiler circulator is shipped loose. Circulator may be mounted on either boiler supply or return piping.
  2. Relief valve is shipped loose, supplied with elbow and nipple to install in rear section tapping.

## Appendix — Ratings



DOE



Boiler Model Number	I=B=R Burner Capacity	DOE Heating Capacity	CSA Input	CSA Output	Net I=B=R Ratings	Boiler Water Content	Shipping Weight, Approx.	DOE Seasonal Efficiency	Flue Conn. Size	Draft Loss Through Boiler
	GPH #2 Oil	MBH	MBH	Btuh	MBH	Gallons	Pounds	AFUE, %		Inches w.c.
<i>Notes:</i>		<i>Notes 1, 6</i>	<i>Notes 2, 6</i>	<i>Note 2</i>	<i>Notes 3, 6</i>				<i>Note 4</i>	<i>Note 5</i>
<b>UO-3 0.8 GPH</b>	0.80	98	112	98	85	15.0	636	86.5	6"	0.000
<b>UO-3 1.0 GPH</b>	1.00	122	140	122	106	15.0	636	86.5	6"	0.020
<b>UO-4</b>	1.20	146	168	146	127	18.3	737	86.2	6"	0.025
<b>UO-5</b>	1.40	172	196	172	150	21.5	852	86.5	6"	0.040

- (1) Based on standard test procedures prescribed by the United States Department of Energy at combustion condition of 13.0% CO<sub>2</sub> and -0.02" w.c. breeching draft.
- (2) Ratings shown are for sea level applications only. For altitudes above 2,000 feet, derate the product capacity by 4% per 1,000 feet above sea level.
- (3) Net I=B=R ratings are based on net installed radiation of sufficient quantity for the requirements of the building and nothing need be added for normal piping and pick-up. Water ratings are based on a piping and pick-up allowance of 1.15. An additional allowance should be made for unusual piping and pick-up loads. Consult local Weil-McLain Sales Office.
- (4) See page 11 for minimum breeching and chimney sizing.
- (5) Boiler draft losses are based on operation at 11.5% CO<sub>2</sub>. Set breeching draft at -0.02 inch water column.
- (6) MBH refers to thousands of Btu per hour.





Weil-McLain  
500 Blaine Street  
Michigan City, IN 46360-2388  
<http://www.weil-mclain.com>