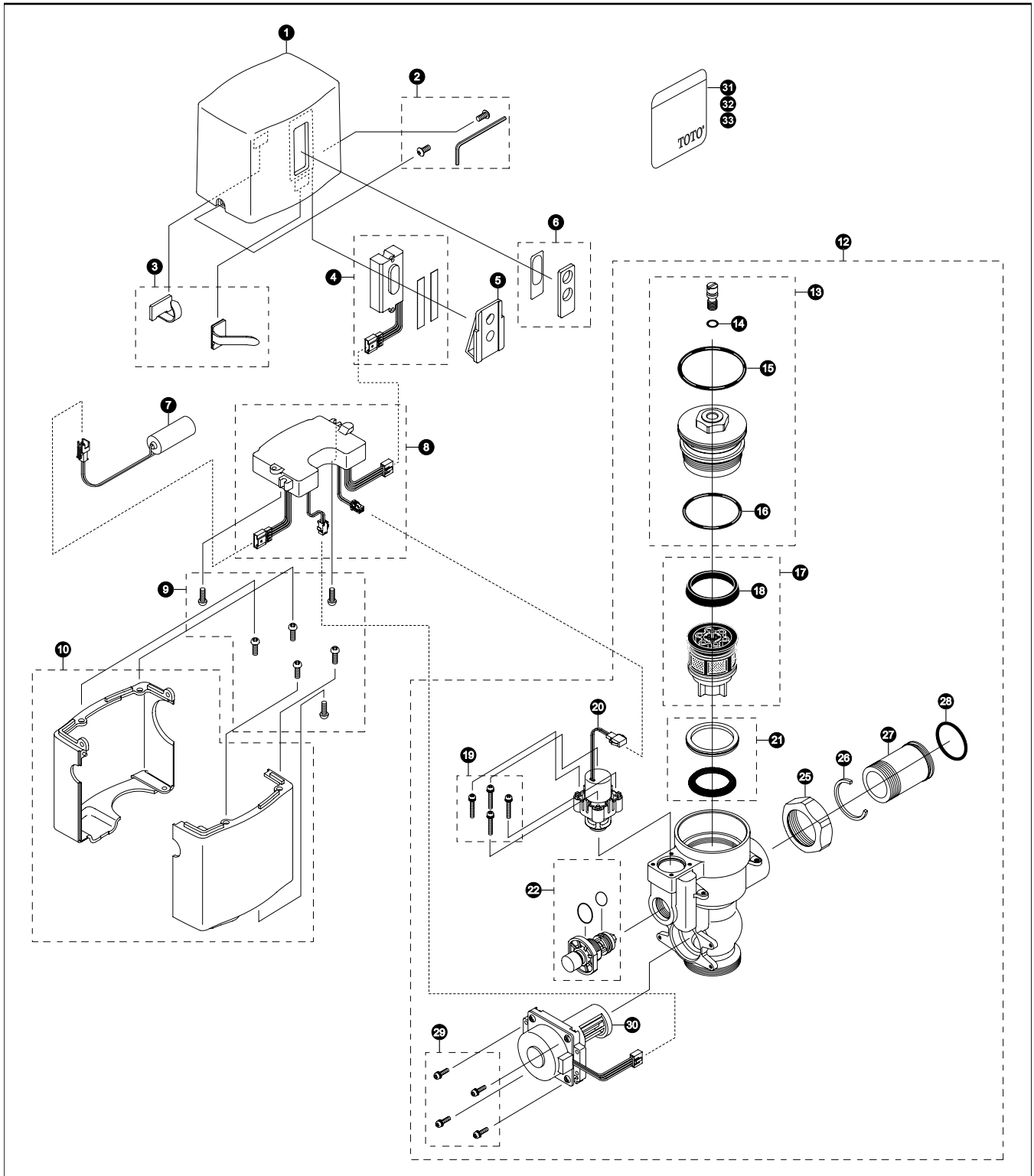


# TET1LN#CP Series

TET1LN32#CP  
TET1LN#CP

## EcoPower® Sensor High Efficiency Toilet Flush Valve Exposed - 1.28 GPF Hydro-Power Charge



# TET1LN#CP Series

TET1LN32#CP  
TET1LN#CP

## EcoPower® Sensor High Efficiency Toilet Flush Valve Exposed - 1.28 GPF Hydro-Power Charge

Item	Part	Description	Item	Part	Description
1	TH559EDV511	Top Cover	<b>Vacuum Breaker Sets</b>		
2	8HU5016	Vandal Resist Set Screw & Allen Wrench Kit	VB9CP-32		Exposed - Top Spud (1-1/2" Outlet)
3	TH559EDV517	Clamp Set	<b>Notes</b>		
4	TH559EDV515	Sensor Controller & Packing Set	For additional information, refer to the individual vacuum breaker parts sheets.		
5	TH559EDV516	Holder			
6	TH559EDV514	Glass & Packing Set			
7	TH559EDV410R	Back-Up Battery			
8	TH559EDV518	Controller (Toilet)			
9	TH559EDV513	M4 Screws (5 pieces)			
10	TH559EDV512	Lower Cover Set			
12	TH559EDV535	Valve Body For Exposed (Toilet 1.28GPF)			
13	TH559EDV507	Valve Cap Assy (Toilet 1.6/1.28 GPF)			
14	TH305SV111	O-Rings (Cap Screw)(10 Pieces)			
15	TH305SV120	O-Rings (Valve Cap)(10 Pieces)			
16	TH305SV112	O-Rings (Valve Guide)(10 Pieces)			
17	TH323V103R	Piston Assembly (1.6/1.28 GPF)			
18	TH305SV103	U-Packing (For Piston)(10 Pieces)			
19	TH559EDV301	Double Sems Screws M3 (4 pieces)			
20	TH559EDV510	Solenoid Unit & Diaphragm Assy			
21	TH321	Seal Washer Kit			
22	TH559EDV506	Manual Flushing Button			
25	TH305SV113	Nut			
26	TH305SV105	Locking Rings (10 Pieces)			
27	TH305SV114	Tail Piece			
28	TH305SV106	O-Rings (Tail Piece)(10 Pieces)			
29	TH559EDV505	Double Sems Screws M3 (4 pieces)			
30	TH559EDV503	Hydro-Power Generator (Toilet)			
31	0EU5160	1.28 GPF Water Saving Sticker (English)			
32	0EU3017	1.28 GPF Water Saving Sticker (Spanish)			
33	0EU3015	1.28 GPF Water Saving Sticker (French)			

### Product Number Explanations

#### Flush Valve

(T) Fitting  
(E) Electronic  
(T) Toilet 1.28 Gpf  
(1) Exposed  
(L) HET Dynamo (Hydro Generator)  
(N) Neutral Rough-In  
(3) 1-1/2" Outlet  
(2) Top Spud  
(#CP) Chrome Finish