



T&S BRASS AND BRONZE WORKS, INC.

2 Saddleback Cove / P.O. Box 1088
Travelers Rest, SC 29690

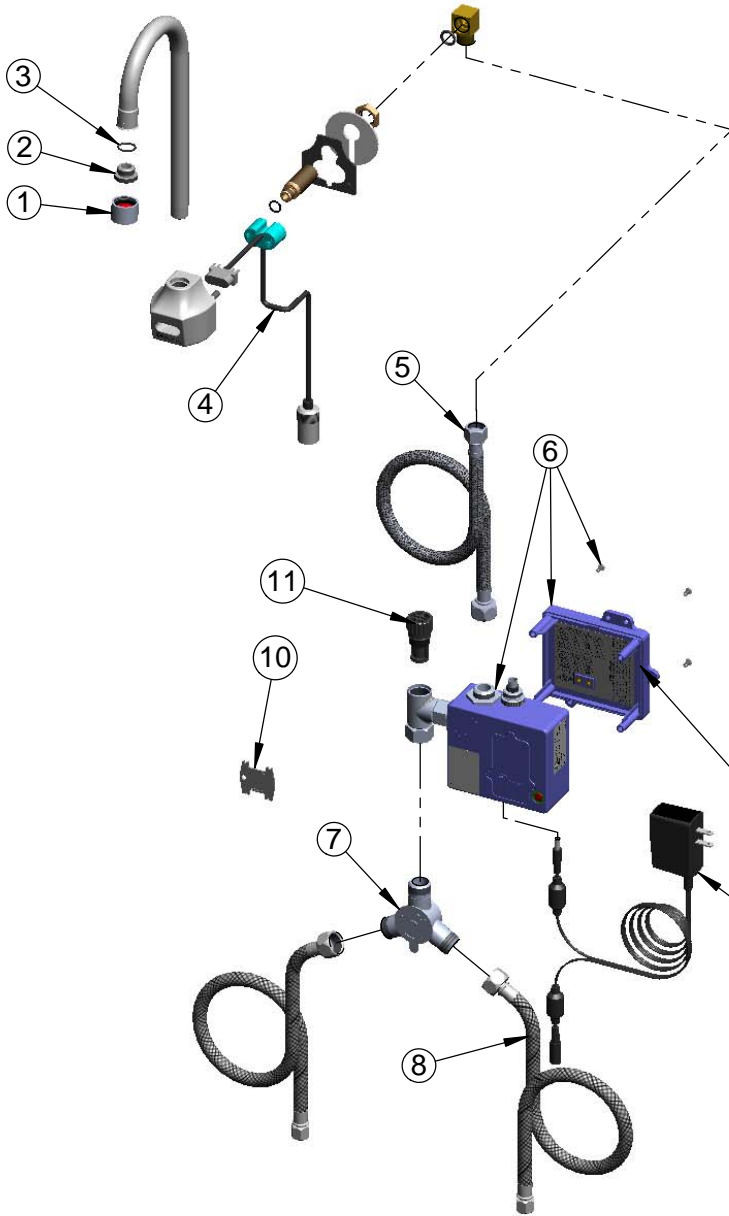
Model No.

EC-3101

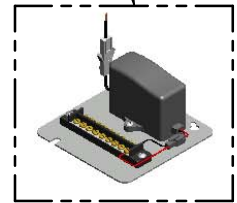
Item No.

Travelers Rest, SC: 800-476-4103 • Simi Valley, CA: 800-423-0150 • Fax: 864-834-3518 • www.tsbrass.com

| ITEM NO. | SALES NO. | DESCRIPTION |
|----------|-----------|---|
| 1 | B-0199-06 | VR Aerator w/ Key |
| 2 | 044A | 3/8" to Aerator Adapter |
| 3 | 006575-45 | -015 O-Ring |
| 4 | 017195-45 | Angled Sensor w/ Cable |
| 5 | 016325-45 | Inlet Hose, Faucet, 1/2" NPSM-F x 3/8" NPSM-F |
| 6 | 016647-45 | ChekPoint Module (Blue) |
| 7 | 5EF-0006 | Mechanical Mixing Valve |
| 8 | 5EF-0005 | Supply Hose, 9/16-24 Female x 1/2" NPSM |
| 9 | 5EF-0002 | A/C Transformer |
| 10 | 015425-45 | Vandal Resistant Key |
| 11 | EC-FILTER | Replacement Filter |



A maximum of (8) ChekPoint Faucets can be hardwire connected and powered by ChekPoint Hardwire AC Transformer. EC-HARDWIRE (Sold Separately)



Label for Flow Control Switch Settings is located on Inside of Back Cover.

Flow Control Switches are located inside Module Housing in Black Box next to Battery Compartment.
*Switches are set to DEFAULT position:
Auto Time Out = 10 seconds
Shut Off Delay = 1 second
Auto Flush = OFF

Remove (4) screws and back cover to access switches.

***Available Water Flow Control Selections:**

(6) Auto Time Out Selections - 10 sec, 25 sec, 45 sec, 60 sec, 3 min, 20 min

(4) Shut Off Delay Selections - 1 sec, 2 sec, 4 sec, 10 sec

Auto Flush for 30 Seconds After Every 12 Inactive Hours - ON or OFF

Product Specifications:

Chrome Plated Brass Electronic Faucet: Wall Mount Rigid Gooseneck w/ VR Aerator, AC/DC Control Module w/ Internal Flow Control Setting Switches, Temperature Control Mixing Valve w/ Integral Check Valve, 18" Lg Hot & Cold Supply Stop Flexible Connector Hoses

| | | |
|----------------------|-----------------------|--------------------------|
| Drawn KJG | Checked GEF | Approved JHB |
| Scale: NTS | | Date: 05/29/12 |