



T&S BRASS AND BRONZE WORKS, INC.

2 Saddleback Cove / P.O. Box 1088
Travelers Rest, SC 29690



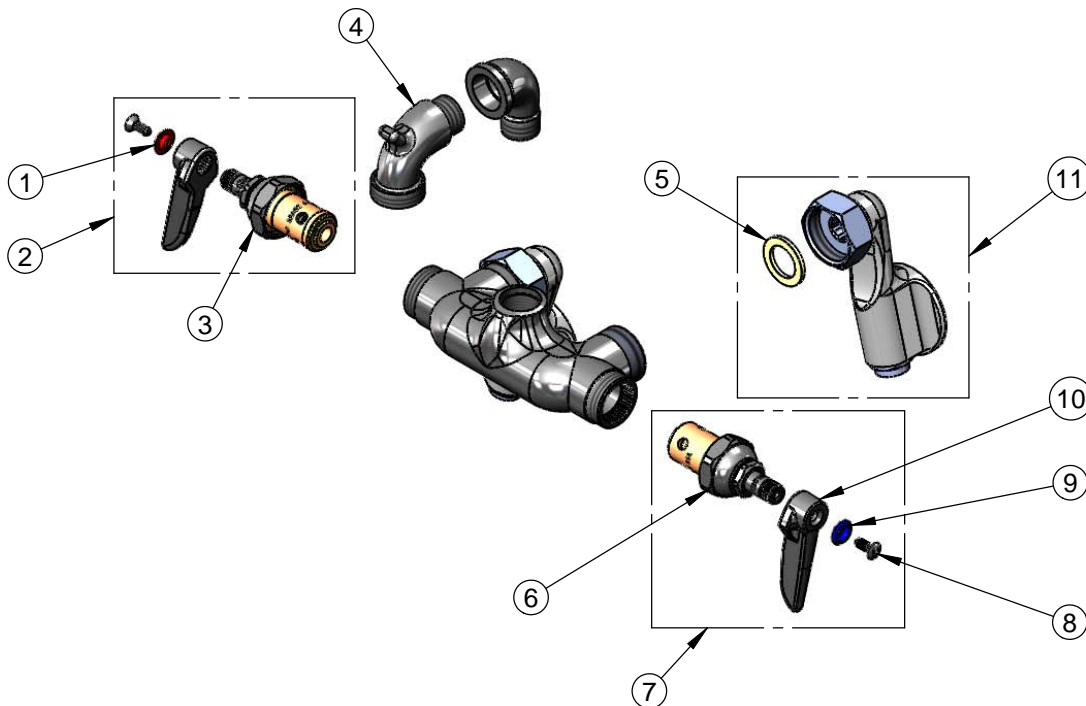
REG. #A2601
ISO #9001

Model No.
B-2345-01-XX

Item No.

Travelers Rest, SC: 800-476-4103 Simi Valley, CA: 800-423-0150 Fax: 864-834-3518 www.tsbrass.com

ITEM NO.	SALES NO.	DESCRIPTION
1	001661-45	Red Index-HW
2	002712-40	Hot Eterna A Spindle Assembly w/ Spring Check, Lever Handle, Color Coded Index & Screw
3	012443-40	Hot Eterna Spindle Assembly w/ Spring Check
4	000270-40	Spout, Garden Hose Outlet
5	001019-45	Coupling Nut Washer
6	012442-40	Cold Eterna Spindle Assembly w/ Spring Check
7	002711-40	Cold Eterna A Spindle Assembly w/ Spring Check, Lever Handle, Color Coded Index & Screw
8	000922-45	Lever Handle Screw
9	001660-45	Blue Index-CW
10	001638-45	Lever Handle
11	00XX	1/2" NPT Adjustable Flange Assembly w/ Screwdriver Stop



Product Specifications:

Wall Mount Polish Chrome Mixing Faucet w/ 1/2" NPT Adjustable Inlets w/ Screwdriver Stops, Lever Handles & Eterna Cartridges w/ Spring Checks

Drawn DHL	Checked KJG	Approved JHB
Scale: 1:4		Date: 08/03/10