



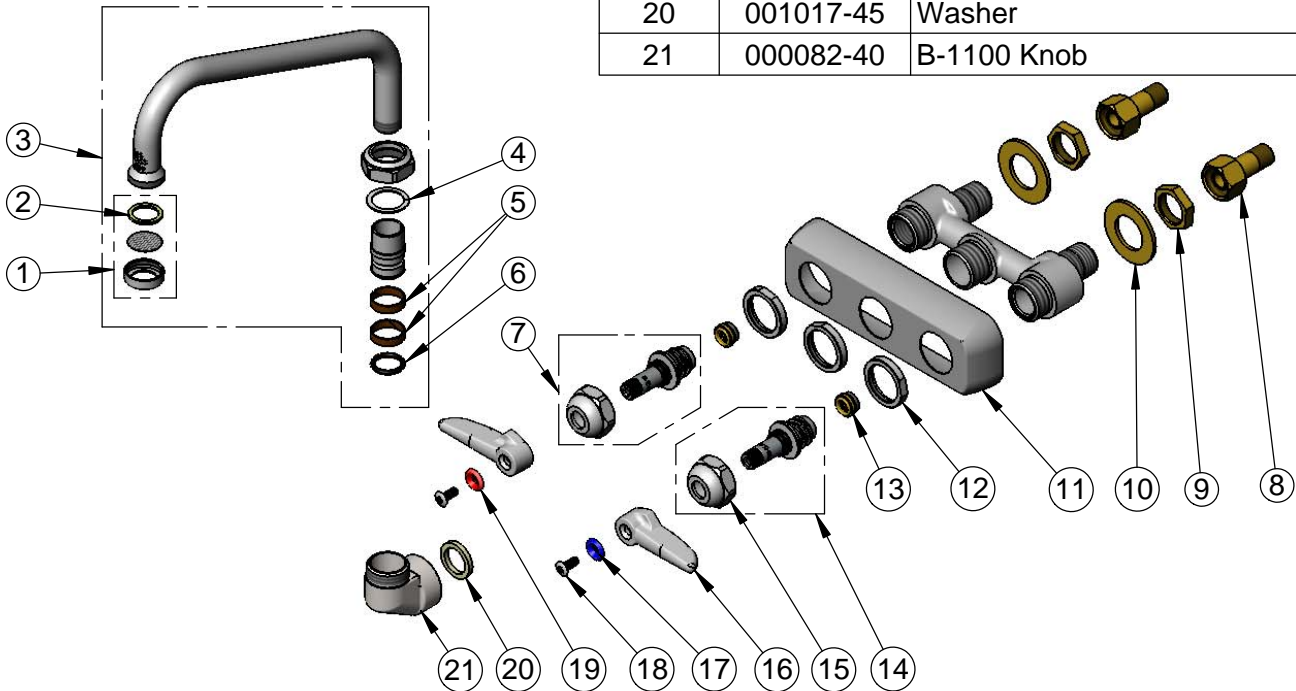
T&S BRASS AND BRONZE WORKS, INC.
 2 Saddleback Cove / P.O. Box 1088
 Travelers Rest, SC 29690

Model No.
B-1106

Item No.

Travelers Rest, SC: 800-476-4103 • Simi Valley, CA: 800-423-0150 • Fax: 864-834-3518 • www.tsbrass.com

| ITEM NO. | SALES NO. | DESCRIPTION |
|----------|-----------|------------------------------|
| 1 | B-PT | Stream Regulator Outlet |
| 2 | 001048-45 | Nozzle Tip Washer |
| 3 | 060X | 8" Swing Nozzle |
| 4 | 009538-45 | Swivel Washer |
| 5 | 011429-45 | Swivel Sleeves (2) |
| 6 | 001074-45 | O-Ring |
| 7 | 009754-25 | B-1100 Spindle Assembly, LTC |
| 8 | 150A | 1/4" NPT Tailpiece & Nut |
| 9 | 002954-45 | Shank Lock Nut |
| 10 | 000999-45 | Brass Lock Washer |
| 11 | 001258-40 | Escutcheon |
| 12 | 000712-25 | Escutcheon Lock Nut |
| 13 | 000763-20 | Seat |
| 14 | 009753-25 | B-1100 Spindle Assembly, RTC |
| 15 | 009749-25 | Bonnet Nut |
| 16 | 001638-45 | Lever Handle |
| 17 | 001660-45 | Blue Index-CW |
| 18 | 000922-45 | Lever Handle Screw |
| 19 | 001661-45 | Red Index-HW |
| 20 | 001017-45 | Washer |
| 21 | 000082-40 | B-1100 Knob |



Product Specifications:
 3 1/2" Wall Mount Workboard Mixing Faucet, Lever Handles,
 8" Swing Nozzle & 1/2" NPT Male Inlets

| | | |
|----------------------|-----------------------|--------------------------|
| Drawn DHL | Checked DMH | Approved JHB |
| Scale: NTS | | Date: 02/21/14 |