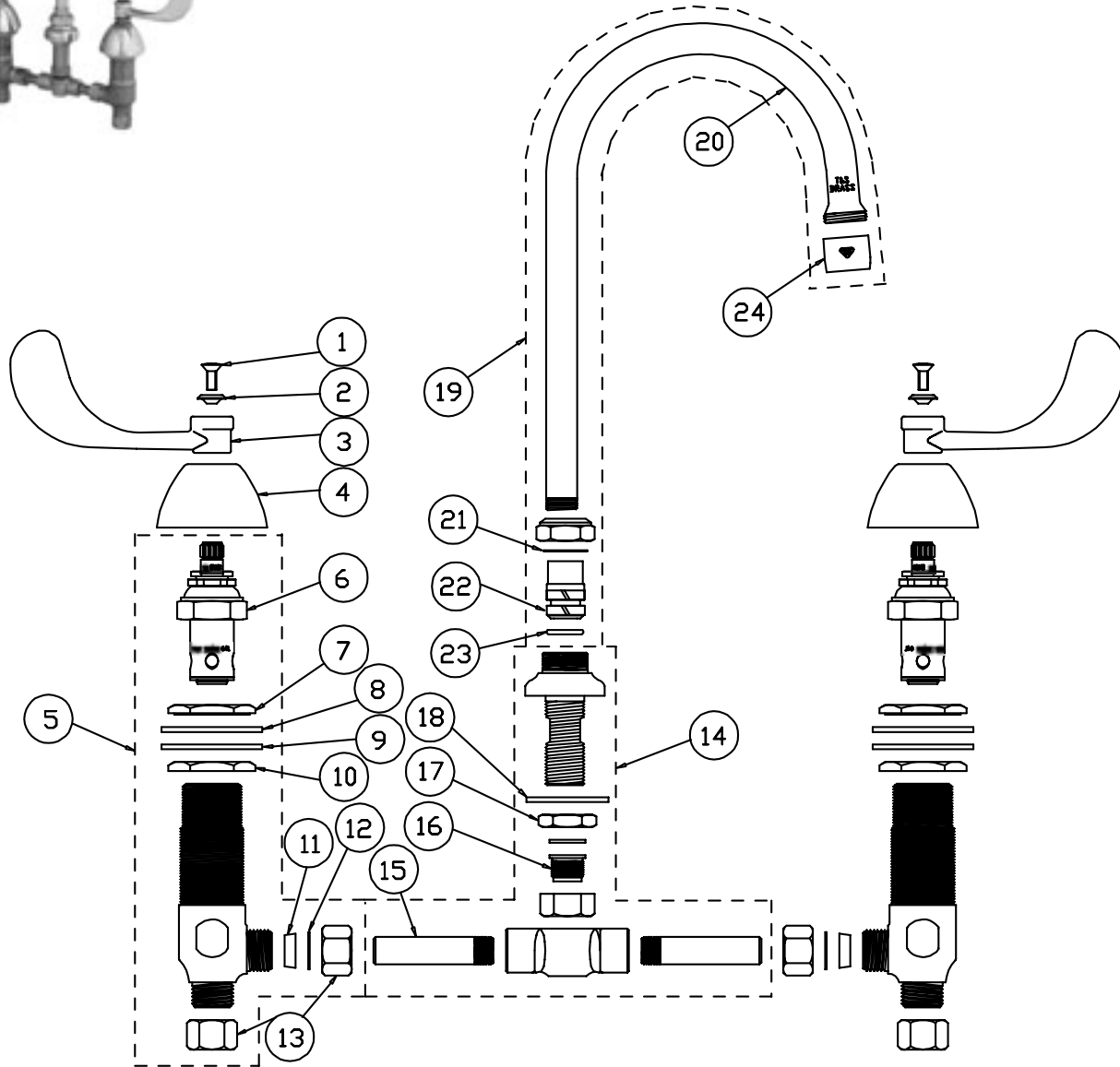


B-2866-05



Medical Commercial Faucet Assembly

1	Screw, Handle	000925-45	12	Washer	000981-45
2	Index, Snap-In, Blue/Cold	001686-45	13	Nut, Coupling	000958-20
	Index, Snap-In, Red/Hot	001194-45	14	Asm, Center Body	006217-40
3	Handle, Wrist Action, 4"	B-WH4	15	Nipple	000342-20
4	Escutcheon	001257-40	16	Insert	003700-45
5	Asm, Body - Cold	161A	17	Locknut	002954-45
	Asm, Body - Hot	162A	18	Washer	000999-45
6	Asm, Spindle, Eterna - RH/Cold	006478-40	19	Asm, Swivel Gooseneck	006854-40
	Asm, Spindle, Eterna - LH/Hot	006477-40	20	Gooseneck	133X
7	Locknut, Body Top	000959-20	21	Washer	009538-45
8	Washer, Body	002290-45	22	Sleeve	011429-45
9	Washer, Nipple	001006-45	23	O-Ring	001074-45
10	Locknut, Body Bottom	000960-20	24	Aerator	B-0199-01
11	Washer, Yoke	001091-45			

