

### INSTALLATION INSTRUCTIONS FOR SENSOR ACTIVATED LAVATORY FAUCETS



**Model ETF-80**  
**24 VAC, Sensor Activated Lavatory Faucet**  
Furnished with a Black Plastic Throat Plate

Compliant to: ASME A112.18.1 and CSA B125.1



Certified



Listed



Listed by I.A.P.M.O.



**Model ETF-880**  
**24 VAC, Sensor Activated Lavatory Faucet**  
Furnished with a Chrome Plated Metal Throat Plate

Compliant to: ASME A112.18.1 and CSA B125.1



Listed by I.A.P.M.O.



#### LIMITED WARRANTY

Sloan Valve Company warrants its Optima ETF-80 and ETF-880 Faucets to be made of first class materials, free from defects of material or workmanship under normal use and to perform the service for which they are intended in a thoroughly reliable and efficient manner when properly installed and serviced, for a period of three years (1 year for special finishes) from date of purchase. During this period, Sloan Valve Company will, at its option, repair or replace any part or parts which prove to be thus defective if returned to Sloan Valve Company, at customer's cost, and this shall be the sole remedy available under this warranty. No claims will be allowed for labor, transportation or other incidental costs. This warranty extends only to persons or organizations who purchase Sloan Valve Company's products directly from Sloan Valve Company for purpose of resale.

**THERE ARE NO WARRANTIES WHICH EXTEND BEYOND THE DESCRIPTION ON THE FACE HEREOF. IN NO EVENT IS SLOAN VALVE COMPANY RESPONSIBLE FOR ANY CONSEQUENTIAL DAMAGES OF ANY MEASURE WHATSOEVER.**

#### PRIOR TO INSTALLATION

Prior to installing the Sloan ETF-80 or ETF-880 Faucet, install the items listed below. Also, refer to the Rough-In illustrations on Page 2.

- **When Using Plug-In Transformer** — Install electrical receptacle for plug-in transformer (120 VAC, 2 amp service for each ETF-233 (24 VAC, 35 VA) plug-in transformer used).
- **When Using Box Mount Transformer** — Install electrical wiring to transformer location (120 VAC, 2 amp service for each EL-248-40 (24 VAC, 40 VA) transformer used).
- Lavatory/sink
- Drain line
- Hot and cold water supply lines or tempered water supply line

#### Multiple Faucets

Multiple faucets can be powered by a single transformer, provided that the transformer has been properly sized. Allow a minimum of 15 VA of current rating for each solenoid valve used. Refer to "Step 4 — Install Transformer" for further information.

#### Mixing Valve

When installing the faucet with a Sloan mixing valve, these Installation Instructions AND the Installation Instructions packaged with the mixing valve MUST be followed.

#### Important:

- *INSTALL ALL ELECTRICAL WIRING IN ACCORDANCE WITH NATIONAL/LOCAL CODES AND REGULATIONS.*
- *INSTALL ALL PLUMBING IN ACCORDANCE WITH APPLICABLE CODES AND REGULATIONS.*
- *A 24 VAC STEP-DOWN TRANSFORMER MUST BE USED.*
- *USE APPROPRIATE PRECAUTIONS WHILE CONNECTING TRANSFORMER TO 120 VAC POWER SOURCE.*

- *DO NOT PLUG TRANSFORMER INTO POWER SOURCE (RECEPTACLE) UNTIL ALL WIRING IS COMPLETED. ALLOWING 24 VAC TRANSFORMER WIRES TO TOUCH OR SHORT WHILE POWER IS BEING SUPPLIED WILL CAUSE PERMANENT DAMAGE TO THE TRANSFORMER AND CIRCUIT CONTROL MODULE.*
- *KEEP THREAD SEALANT OUT OF YOUR WATERWAY TO PREVENT COMPONENT PART DAMAGE! DO NOT USE ANY SEALANT ON COMPRESSION FITTINGS. FOR THREADED PIPE FITTINGS, DO NOT APPLY SEALANT TO THE FIRST TWO "STARTER" THREADS.*
- *FLUSH ALL WATER LINES UNTIL WATER IS CLEAR BEFORE CONNECTING SOLENOID TO SUPPLY STOPS.*

**DO NOT INSTALL THE SPRAY HEAD UNTIL AFTER THE SUPPLY LINES HAVE BEEN FLUSHED.**

#### BAK-CHEK® TEE USAGE

When connecting the Sloan ETF-80 or ETF-880 Faucet to both hot and cold water supplies, a Bak-Chek® Tee is provided and required as illustrated in the Rough-in drawings on Page 2. Water temperature can be controlled by adjusting the supply stops.

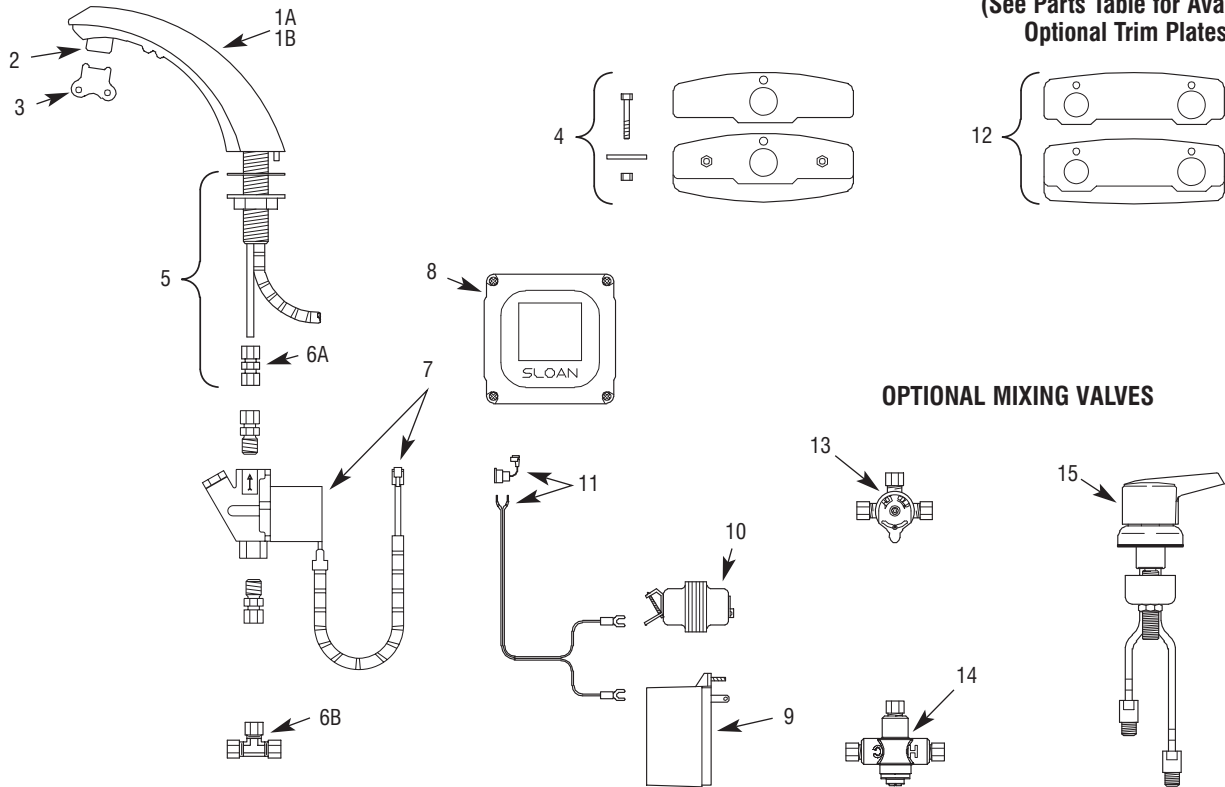
When connecting the faucet to a single line water supply or a pre-tempered water supply, a Bak-Chek® Tee is not required.

A Bak-Chek® Tee is not required or provided when a Temperature Mixing Valve is included with the faucet.

#### TOOLS REQUIRED FOR INSTALLATION

- Open end wrenches for hex sizes: 1", 5/8", 9/16" and 1/2"
- Basin wrench
- Slotted screwdriver, 3/16"
- Slotted screwdriver (supplied)
- Phillips head screwdriver, #2
- Pliers
- Wire stripper/crimping tool

# PARTS LIST



## OPTIONAL TRIM PLATES (See Parts Table for Available Optional Trim Plates)

## OPTIONAL MIXING VALVES

Item No.	Part No.	Description
1A	ETF-250-A ETF-631-A	Faucet/Sensor Assembly (ETF-80) Throat Plate Sensor Assembly Only (for ETF-80 Faucets manufactured after October 2003, identified by an all white Sloan name on Sensor) For ETF-80 faucets manufactured prior to October 2003 (identified by a white and red Sloan name on throat plate), sensor assembly discontinued. Use ETF-250 Faucet/Sensor assembly.
1B	ETF-625-A ETF-628-A	Faucet/Sensor Assembly (ETF-880) Throat Plate Sensor Assembly Only (ETF-880)
2	ETF-1021-A ETF-1022-A ETF-1028-A	0.5 gpm (1.9 Lpm) Spray Head with Key 2.2 gpm (8.3 Lpm) Aerator Spray Head with Key 1.5 gpm (5.7 Lpm) Laminar Flow Spray Head
3	ETF-435	Key (Not Required for ETF-1028-A Laminar Flow Spray Head)
4	ETF-295-A	4" (102 mm) Centerset Trim Plate Kit for ETF-80 Faucet (Faucet Only) includes two (2) Nuts, two (2) Hex Screws, two (2) Flat Washers, Single Hole CP Cover Plate and Black Plastic Base Plate
—	ETF-662-A	4" (102 mm) Centerset Trim Plate Kit for ETF-880 Faucet (Faucet Only) includes Back-up Spacer (not shown)
5	ETF-290-A	Faucet Mounting Kit, Includes Rubber Gasket, Flange Nut and ETF-297 1/4" to 3/8" Compression Fitting Connector
6A	ETF-297	1/4" to 3/8" Compression Fitting Connector
6B	ETF-617-A	3/8" Bak-Chek® Tee Compression Fitting
7	ETF-370-A	Solenoid Valve, 24 VAC, Includes Wire Harness
8	ETF-450-A	Control Module Assembly
9	ETF-233	Plug-In Transformer
10	EL-248-40	Box Mount Transformer
11	ETF-458-A	Power Cable (Transformer to Control Module) with Strain Relief and two (2) Crimp Connectors

Item No.	Part No.	Description
<b>OPTIONAL TRIM PLATES</b>		
12	ETF-299-A	4" (102 mm) Centerset Trim Plate Kit for ETF-80 Faucet with Optional Mixing Valve includes Dual Hole CP Cover Plate and Black Plastic Base Plate
—	ETF-510-A	8" (203 mm) Centerset Trim Plate Kit for ETF-80 and ETF-880 Faucet (Faucet Only) includes two (2) Finger Nuts, two (2) Washer Gaskets, two (2) Fender Washers, Base Gasket, Back-up Spacer and CP Single Hole Trim Plate Assembly (not shown)
—	ETF-104-A	8" (203 mm) Centerset Trim Plate Kit for Faucet with Optional Mixing Valve (not shown)

Item No.	Part No.	Description
<b>OPTIONAL MIXING VALVES</b>		
13	MIX-60-A	Below Deck Mechanical Water Mixing Valve (BDM Variation)
14	MIX-135-A	Below Deck Thermostatic Water Mixing Valve (BDT Variation)
15	MIX-110-AA	Optimix® Deck Mounted Water Mixing Valve (ADM Variation)

<b>FAUCET CABLE EXTENSION CORDS</b>			
Faucet to Control Module		Solenoid to Control Module	
ETF-1005-26	26 Inch (0.7 meter) Length	ETF-1003-36	36 Inch (0.9 meter) Length
ETF-1005-36	36 Inch (0.9 meter) Length	ETF-1003-48	48 Inch (1.2 meter) Length
ETF-1005-72	72 Inch (1.8 meter) Length	ETF-1003-72	72 Inch (1.8 meter) Length
ETF-1005-108	108 Inch (2.7 meter) Length	ETF-1003-108	108 Inch (2.7 meter) Length

<b>SOLENOID VALVE REPAIR KITS</b>	
ETF-1009-A	Solenoid repair kit
ETF-437-A	Solenoid compression fitting kit

For additional information about Sloan Mixing Valves or Trim Plates, consult our Installation Instructions and Maintenance Guides.  
If further assistance is required, please contact the Sloan Valve Company Installation Engineering Department at 1-888-SLOAN-14 (1-888-756-2614).

**NOTICE:** The information contained in this document is subject to change without notice.