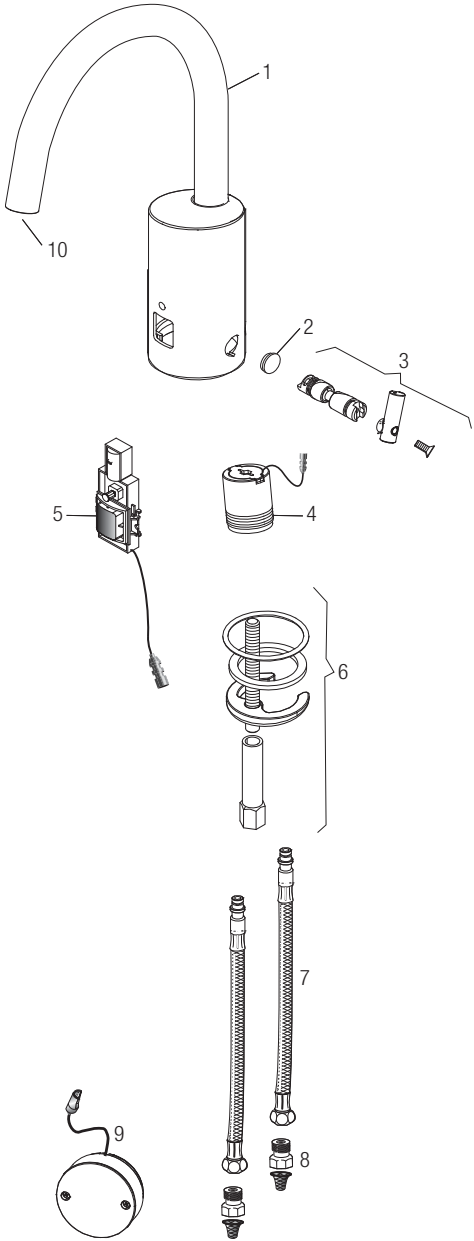


Optima Plus® EAF-750



PARTS LIST—EAF-750 FAUCETS

Item No.	Code No.	Part No.	Description
1.	—	—	Spout Assembly
2.	—	—	Integral Side Mixer Handle Cap
3.	—	—	Integral Side Mixer Kit
4.	0335001	EAF-2	Solenoid
5.	—	—	Sensor Assembly
6.	0335000	EAF-1	Mounting Hardware
7.	3335023	EAF-1008	13" (330 mm) Flexible Supply Hose
8.	0335007	EAF-9	Filter/Strainer
9.	0335048	EAF-48	Battery Box
10.	3335086	EAF-1014-A	Multi-Lam Spray Head Kit 0.5 gpm (1.9 Lpm) Male Cache TJ
	3335087	EAF-1015-A	Spray Head Kit 1.5 gpm (5.7 Lpm) Aerated Male Cache TJ
	3335088	EAF-1016-A	Spray Head Kit 1.5 gpm (5.7 Lpm) Laminar Male Cache TJ

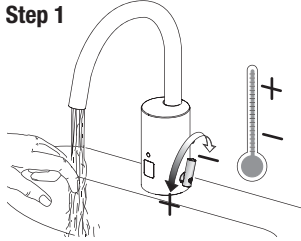
Optima Plus® EAF-750

OPERATION

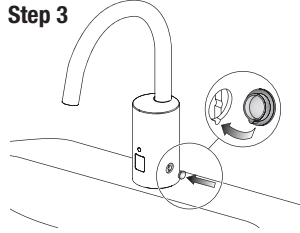
As the user's hands enter the beam's effective range, the beam is reflected back into the sensor receiver and activates the solenoid valve allowing water to flow from the faucet. Water will flow until the hands of the user are removed or until the faucet reaches its automatic time out limit setting.

SET AND FIX TEMPERATURE (OPTIONAL)

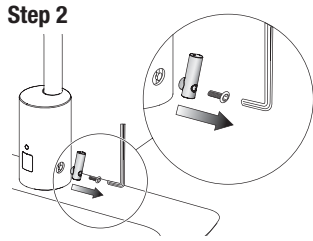
Step 1



Step 3



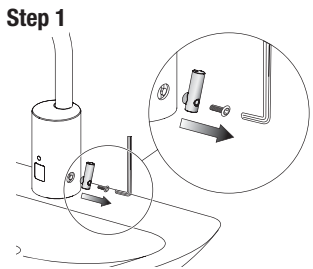
Step 2



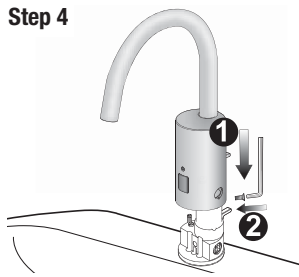
HOT LIMIT STOP ADJUSTMENT

Limit the maximum water temperature. Note: this does not take the place of an ASSE 1070 certified mixing device. But is an added measure to limit delivery of hot water.

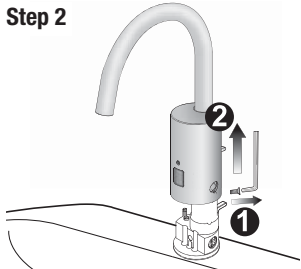
Step 1



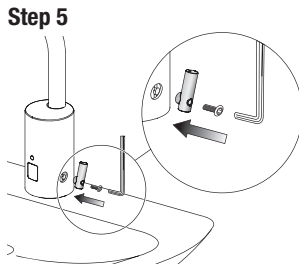
Step 4



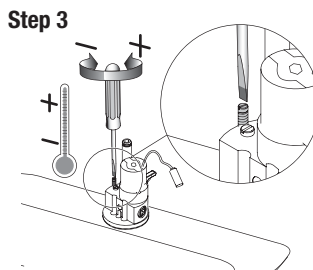
Step 2



Step 5

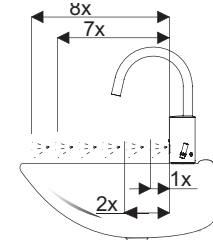


Step 3



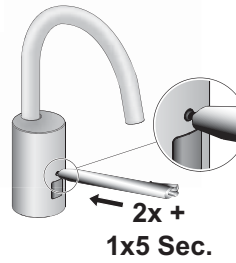
SENSOR RANGE ADJUSTMENT

Factory setting is appropriate for the majority of applications and should not require resetting unless under extreme situations.

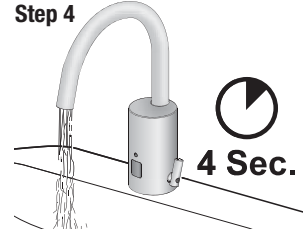


FACTORY DEFAULT = 6

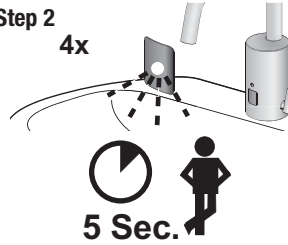
Step 1



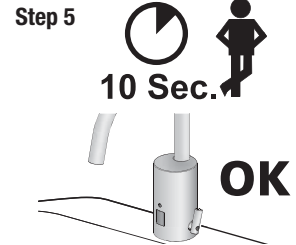
Step 4



Step 2

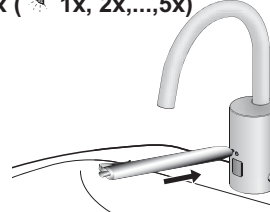


Step 5



Step 3

1 x (1x, 2x,...,5x)



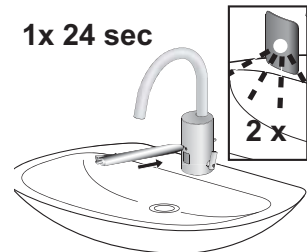
12/24 LINE PURGE FEATURE

This feature will operate the faucet every 12 or 24 hours since last use, if not used to prevent stagnant water conditions.

Default purge duration is two (2) minutes.

Consult factory regarding other timing options.

1x 24 sec



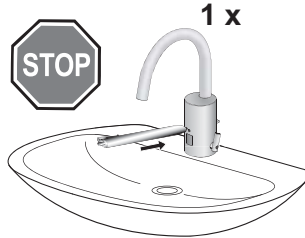
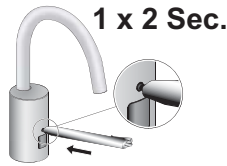
Optima Plus® EAF-750

I.Q.-CLICK FEATURE

1. CONTINUOUS RUN

Continuous run of water for two minutes.

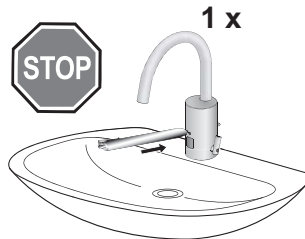
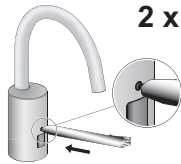
Faucet will operate normally after two minutes or after pressing i.q.-click button once.



2. CLEANING MODE

Pause faucet for cleaning for two (2) minutes.

Faucet will operate normally after two (2) minutes or after pressing i.q.-click button once.

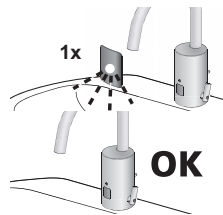


OFF-DELAY (FOLLOW UP TIME)

Duration of time the water runs after target is removed.
Press the button for approximately six (6) seconds. Release.

Press again (water flows) and release when the desired time of water flow (0-5 seconds) is reached.

Sensor will flash once and then the faucet is ready to operate.



BATTERY REPLACEMENT

Note: Replace battery when red LED indicator flashes each time faucet is in use or when faucet stops functioning.

No need to turn off water.

Loosen screw with hex wrench and remove cap. Slide cover forward and lift off.

Remove battery.

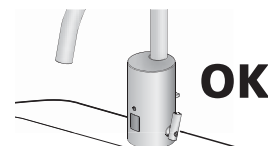
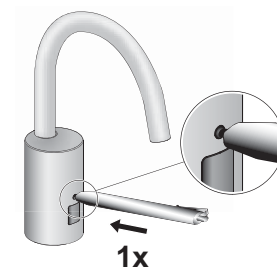
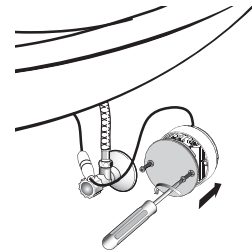
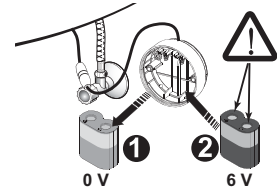
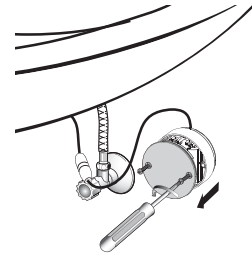
Replace batteries with new "CR-P2" lithium battery.

Replace cover.

Activate faucet by pressing *i.q. cliq* one (1) time, then immediately step away.

Faucet will operate for four (4) seconds.

Wait 10 seconds and then the faucet is ready for operation.



Hand Hygiene

Optima Plus® EAF-750

TROUBLESHOOTING GUIDE

1. Faucet does not function.

- A. Adhesive packaging label affixed over sensor eye.
Remove adhesive label from sensor eye.
- B. "Intermittent Off" is activated.
Press button once.
- C. Water supply stop(s) closed.
Open water supply stop(s).
- D. Battery is "dead".
Replace battery (refer to Battery Replacement section of guide).

2. Faucet delivers water in an uncontrolled manner.

- A. Reflection.
Remove reflective surface.
- B. Faucet is not working properly.
Contact Sloan Technical Support.

3. Faucet does not deliver any water when Sensor is activated.

INDICATOR: Solenoid Valve produces an audible "CLICK."

- A. Water supply stop(s) closed.
Open water supply stop(s).
- B. Water supply stop strainer(s) clogged.
Remove, clean, and reinstall water supply stop strainer(s). Replace strainer(s), if required.

INDICATOR: Solenoid Valve DOES NOT produce an audible "CLICK."

- A. Battery low (battery powered models).
Replace battery (refer to Battery Replacement section of guide).

4. Faucet delivers only a slow flow or dribble when sensor is activated.

- A. Water supply stop(s) are partially closed.
Completely open water supply stop(s).
- B. Water supply stop strainer(s) clogged.
Remove, clean, and reinstall water supply stop strainer(s). Replace strainer(s), if required.
- C. Spray head is clogged.
Remove, clean, and reinstall spray head. Replace spray head, if required.
- D. Faucet is not working properly.
Contact Sloan Technical Support.

5. Faucet does not stop delivering water or continues to drip after user is no longer detected.

- A. Faucet is not working properly.
Contact Sloan Technical Support.

6. LED indicator blinks when faucet is in use.

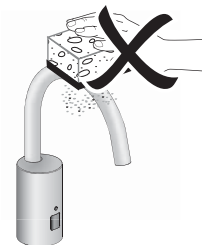
- A. Battery low (battery powered models).
Replace battery (refer to Battery Replacement section of guide).

7. The water temperature is too hot or too cold on a faucet connected to hot and cold supply lines.

- A. Supply stops are not adjusted properly.
Adjust supply stops.

CARE AND CLEANING

DO NOT USE abrasive or chemical cleaners (including chlorine bleach) to clean faucets that may dull the luster and attack the chrome or special decorative finishes. Use ONLY mild soap and water, then wipe dry with clean cloth or towel. While cleaning the bathroom sink, protect the faucet from any splattering of cleaner. Acids and cleaning fluids will discolor or remove chrome plating.



When assistance is required, please contact Sloan Technical Support at: 1-888-SLOAN-14 (1-888-756-2614).