

HD 45

REF #	PART #	NAME	NOTES
0	5H79689-2160	Ignition Cable	
0	5H75185-14	Silicon Tube 1/4" ID	
0	5H74997-1	Insulation (Top, Bottom panels)	
0	5H74997-2	Insulation (side panel)	
0	5H74992	Collector Box	
0	5H74996-1	Gasket (Power Exhauster)	
0	5H80027	Control Panel	
1	5H77595	Access Panel	
2	5H75015-1	Burner	
3	5H79614	Burner Box	
5	5H74995-1	Gasket (Collector Box)	
7	5H62892-2	Deflector Blade	
9	5H74973-1	Fan	

10	5H79663-5	Fan Guard	
11	5H75012	Burner Bracket	
12	5H75002-7	Flame Rollout Switch	More common replacement part
14	5H75031	Flame Sensor	More common replacement part
15	5H77593	Front Panel	
16	5H79751	Gas Valve Natural Gas	More common replacement part
16	5H79869	Gas Valve Propane Gas	More common replacement part
17	3H37360-1002	Heat Exchanger Kit	More common replacement part
17	3H37360-2002	Heat Exchanger Kit	More common replacement part
19	5H75769-1	High Limit Switch (stalk mount)	
20	5H79194	Manifold	
21	9F10262	Motor(fan)	More common replacement part
23	5H75026-49	Orifice - Natural Gas	More common replacement part
23	5H75026-56	Orifice - Propane Gas	More common replacement part
24	5H80013-1	Casing	HD
25	3H37362-1	Power Exhaust Assembly	
26	5H75030-3	Pressure Switch	More common replacement part
27	5H74988-1	Side Panel	
28	5H79749	Ignition Control	
29	5H56761	Spring	
30	5H75029	Control Transformer	More common replacement part
31	5H74990	Unit Mounting Bracket	
40	5H79636	Ignitor, Direct Spark	More common replacement part

REF #	PART #	NAME	NOTES	FP #	QTY	CART ACTIONS
0	5H7968 9-2160	Ignition Cable		4879 8	1	

Collapse Part



REF #	PART #	FP #	NAME	QTY	NOTES
0	5H79689-2160	48798	Ignition Cable	1	

* Additional parts representing alternate configurations may be shown. Please insure that the part you are requesting matches the part number and finished part(fp) number from the product's bill of materials.

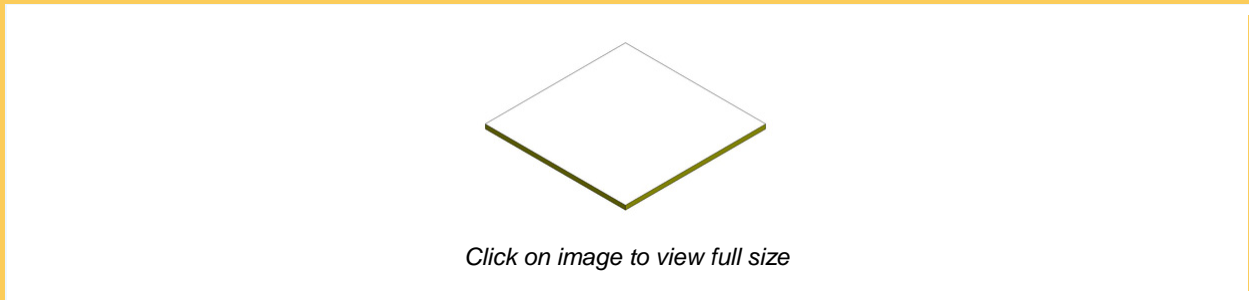
0	5H7518 5-14	Silicon Tube 1/4" ID		0	1	
---	----------------	----------------------	--	---	---	--

Collapse Part



We are sorry, but an error has occurred. Please click [here](#) and try again:

0	5H7499 7-1	Insulation (Top, Bottom panels)		4882 6	2	
---	---------------	---------------------------------	--	-----------	---	--

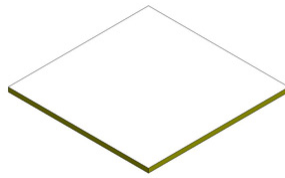
Collapse Part



REF #	PART #	FP #	NAME	QTY	NOTES
0	5H74997-1	48826	Insulation (Top, Bottom panels)	2	
<i>* Additional parts representing alternate configurations may be shown. Please insure that the part you are requesting matches the part number and finished part(fp) number from the product's bill of materials.</i>					

0	 5H74997-2	Insulation (side panel)		48827	1	
---	---	--------------------------------	--	-------	---	---



Collapse Part



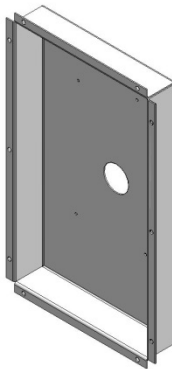
Click on image to view full size

REF #	PART #	FP #	NAME	QTY	NOTES
0	5H74997-2	48827	Insulation (side panel)	1	

** Additional parts representing alternate configurations may be shown. Please insure that the part you are requesting matches the part number and finished part(fp) number from the product's bill of materials.*

0	 5H74992-1	Collector Box		32191	1	
---	---	----------------------	--	-------	---	---

Collapse Part



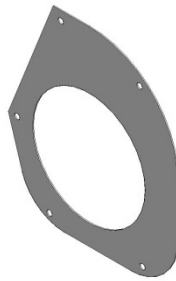
Click on image to view full size

REF #	PART #	FP #	NAME	QTY	NOTES
0	5H74992	32191	Collector Box	1	

* Additional parts representing alternate configurations may be shown. Please insure that the part you are requesting matches the part number and finished part(fp) number from the product's bill of materials.

0	 5H7499 6-1	Gasket (Power Exhauster)		4877 5	1	
---	---	---------------------------------	--	-----------	---	---



Collapse Part



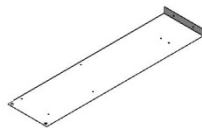
Click on image to view full size

REF #	PART #	FP #	NAME	QTY	NOTES
0	5H74996-1	48775	Gasket (Power Exhauster)	1	

* Additional parts representing alternate configurations may be shown. Please insure that the part you are requesting matches the part number and finished part(fp) number from the product's bill of materials.

0	 5H8002 7	Control Panel		4881 9	1	
---	---	----------------------	--	-----------	---	---



Collapse Part



Click on image to view full size

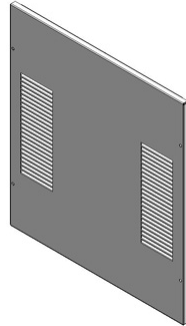
REF #	PART #	FP #	NAME	QTY	NOTES
0	5H80027	48819	Control Panel	1	

* Additional parts representing alternate configurations may be shown. Please insure that the part you are requesting matches the part number and finished part(fp) number from the product's bill of materials.

1	 Access Panel			4840 0	1	
---	--	--	--	-----------	---	---

5H7759
5



Collapse Part



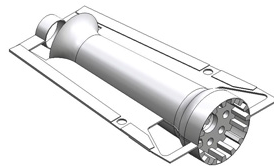
Click on image to view full size

REF #	PART #	FP #	NAME	QTY	NOTES
1	5H77595	48400	Access Panel	1	

* Additional parts representing alternate configurations may be shown. Please insure that the part you are requesting matches the part number and finished part(fp) number from the product's bill of materials.

2	 5H7501 5-1	Burner		4877 7	3	
---	--	---------------	--	-----------	---	---



Collapse Part



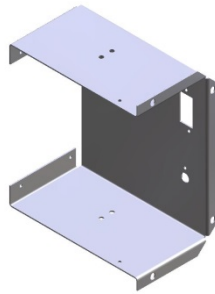
Click on image to view full size

REF #	PART #	FP #	NAME	QTY	NOTES
2	5H75015-1	48777	Burner	3	

* Additional parts representing alternate configurations may be shown. Please insure that the part you are requesting matches the part number and finished part(fp) number from the product's bill of materials.

3	 5H7961 4	Burner Box		4879 2	1	
---	---	-------------------	--	-----------	---	---



Collapse Part



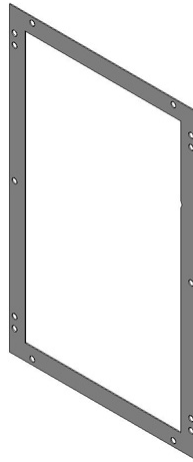
Click on image to view full size

REF #	PART #	FP #	NAME	QTY	NOTES
3	5H79614	48792	Burner Box	1	

* Additional parts representing alternate configurations may be shown. Please insure that the part you are requesting matches the part number and finished part(fp) number from the product's bill of materials.

5	 5H7499 5-1	Gasket (Collector Box)		4877 3	1	
---	---	-------------------------------	--	-----------	---	---



Collapse Part



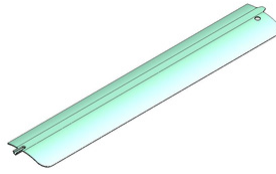
Click on image to view full size

REF #	PART #	FP #	NAME	QTY	NOTES
5	5H74995-1	48773	Gasket (Collector Box)	1	

* Additional parts representing alternate configurations may be shown. Please insure that the part you are requesting matches the part number and finished part(fp) number from the product's bill of materials.

7	 5H6289 2-2	Deflector Blade		1192 6	3	
---	---	------------------------	--	-----------	---	---



Collapse Part



Click on image to view full size

REF #	PART #	FP #	NAME	QTY	NOTES
7	5H62892-2	11926	Deflector Blade	3	

* Additional parts representing alternate configurations may be shown. Please insure that the part you are requesting matches the part number and finished part(fp) number from the product's bill of materials.

9	 5H7497 3-1	Fan		3225 0	1	
---	---	------------	--	-----------	---	---



Collapse Part



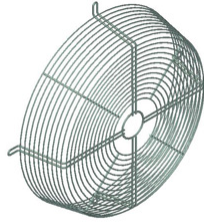
Click on image to view full size

REF #	PART #	FP #	NAME	QTY	NOTES
9	5H74973-1	32250	Fan	1	

* Additional parts representing alternate configurations may be shown. Please insure that the part you are requesting matches the part number and finished part(fp) number from the product's bill of materials.

10	 5H7966 3-5	Fan Guard		3225 6	1	
----	---	------------------	--	-----------	---	---



Collapse Part



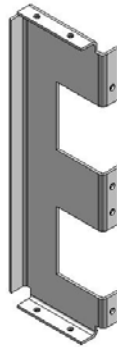
Click on image to view full size

REF #	PART #	FP #	NAME	QTY	NOTES
10	5H79663-5	32256	Fan Guard	1	

* Additional parts representing alternate configurations may be shown. Please insure that the part you are requesting matches the part number and finished part(fp) number from the product's bill of materials.

11	 5H7501 2	Burner Bracket		3222 4	1	
----	---	-----------------------	--	-----------	---	---



Collapse Part



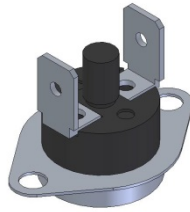
Click on image to view full size

REF #	PART #	FP #	NAME	QTY	NOTES
11	5H75012	32224	Burner Bracket	1	

* Additional parts representing alternate configurations may be shown. Please insure that the part you are requesting matches the part number and finished part(fp) number from the product's bill of materials.

12	 5H7500 2-7	Flame Rollout Switch	More common replacement part	5608 5	2	
----	---	-----------------------------	------------------------------	-----------	---	---



Collapse Part



Click on image to view full size

REF #	PART #	FP #	NAME	QTY	NOTES
12	5H75002-7	56085	Flame Rollout Switch	2	More common replacement part

* Additional parts representing alternate configurations may be shown. Please insure that the part you are requesting matches the part number and finished part(fp) number from the product's bill of materials.

14	 5H7503 1	Flame Sensor	More common replacement part	3224 2	1	
----	---	---------------------	------------------------------	-----------	---	---



Collapse Part



Click on image to view full size

REF #	PART #	FP #	NAME	QTY	NOTES
14	5H75031	32242	Flame Sensor	1	More common replacement part

* Additional parts representing alternate configurations may be shown. Please insure that the part you are requesting matches the part number and finished part(fp) number from the product's bill of materials.

15	 5H7759	Front Panel		0	1	
----	--	--------------------	--	---	---	---

Collapse Part



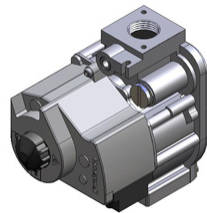
Click on image to view full size

REF #	PART #	FP #	NAME	QTY	NOTES
15	5H77593	0	Front Panel	1	

* Additional parts representing alternate configurations may be shown. Please insure that the part you are requesting matches the part number and finished part(fp) number from the product's bill of materials.

16	 5H7975 1	Gas Valve Natural Gas	More common replacement part	5366 6	1	
----	--	------------------------------	------------------------------	-----------	---	--



Collapse Part



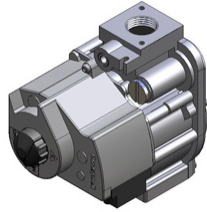
Click on image to view full size

REF #	PART #	FP #	NAME	QTY	NOTES
16	5H79751	53666	Gas Valve Natural Gas	1	More common replacement part

* Additional parts representing alternate configurations may be shown. Please insure that the part you are requesting matches the part number and finished part(fp) number from the product's bill of materials.

16	 5H7986 9	Gas Valve Propane Gas	More common replacement part	5370 1	1	
----	---	------------------------------	------------------------------	-----------	---	---



Collapse Part



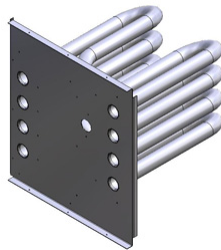
Click on image to view full size

REF #	PART #	FP #	NAME	QTY	NOTES
16	5H79869	53701	Gas Valve Propane Gas	1	More common replacement part

* Additional parts representing alternate configurations may be shown. Please insure that the part you are requesting matches the part number and finished part(fp) number from the product's bill of materials.

17	 3H37360-1002	Heat Exchanger Kit	More common replacement part	53837	1	
----	--	---------------------------	------------------------------	-------	---	---



Collapse Part



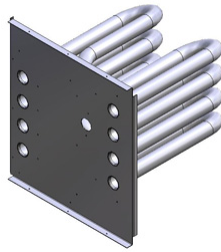
Click on image to view full size

REF #	PART #	FP #	NAME	QTY	NOTES
17	3H37360-1002	53837	Heat Exchanger Kit	1	More common replacement part

* Additional parts representing alternate configurations may be shown. Please insure that the part you are requesting matches the part number and finished part(fp) number from the product's bill of materials.

17	 3H37360-2002	Heat Exchanger Kit	More common replacement part	48771	1	
----	--	---------------------------	------------------------------	-------	---	---



Collapse Part



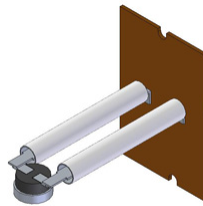
Click on image to view full size

REF #	PART #	FP #	NAME	QTY	NOTES
17	3H37360-2002	48771	Heat Exchanger Kit	1	More common replacement part

* Additional parts representing alternate configurations may be shown. Please insure that the part you are requesting matches the part number and finished part(fp) number from the product's bill of materials.

19	 5H7576 9-1	High Limit Switch (stalk mount)		5365 8	1	
----	---	--	--	-----------	---	---



Collapse Part



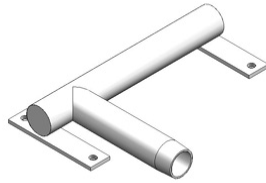
Click on image to view full size

REF #	PART #	FP #	NAME	QTY	NOTES
19	5H75769-1	53658	High Limit Switch (stalk mount)	1	

* Additional parts representing alternate configurations may be shown. Please insure that the part you are requesting matches the part number and finished part(fp) number from the product's bill of materials.

20	 5H7919 4	Manifold		4842 9	1	
----	---	-----------------	--	-----------	---	---



Collapse Part



Click on image to view full size

REF #	PART #	FP #	NAME	QTY	NOTES
20	5H79194	48429	Manifold	1	

* Additional parts representing alternate configurations may be shown. Please insure that the part you are requesting matches the part number and finished part(fp) number from the product's bill of materials.

21	 9F1026 2	Motor(fan)	More common replacement part	3225 4	1	
----	---	-------------------	------------------------------	-----------	---	---



Collapse Part



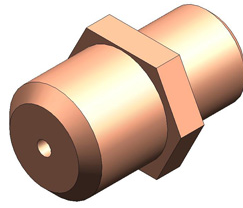
Click on image to view full size

REF #	PART #	FP #	NAME	QTY	NOTES
21	9F10262	32254	Motor(fan)	1	More common replacement part

* Additional parts representing alternate configurations may be shown. Please insure that the part you are requesting matches the part number and finished part(fp) number from the product's bill of materials.

23	 5H7502 6-49	Orifice - Natural Gas	More common replacement part	3223 3	3	
----	--	------------------------------	------------------------------	-----------	---	---

Collapse Part



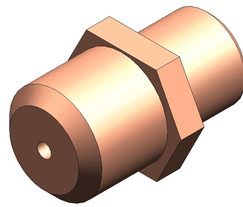
Click on image to view full size

REF #	PART #	FP #	NAME	QTY	NOTES
23	5H75026-49	32233	Orifice - Natural Gas	3	More common replacement part

* Additional parts representing alternate configurations may be shown. Please insure that the part you are requesting matches the part number and finished part(fp) number from the product's bill of materials.

23	5H75026-56	Orifice - Propane Gas	More common replacement part	53733	3	
----	------------	------------------------------	------------------------------	-------	---	--

Collapse Part



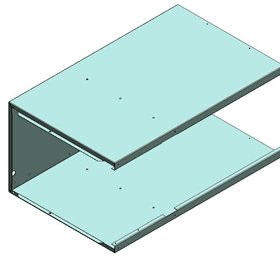
Click on image to view full size

REF #	PART #	FP #	NAME	QTY	NOTES
23	5H75026-56	53733	Orifice - Propane Gas	3	More common replacement part

* Additional parts representing alternate configurations may be shown. Please insure that the part you are requesting matches the part number and finished part(fp) number from the product's bill of materials.

24	5H80013-1	Casing	HD	48817	1	
----	-----------	---------------	----	-------	---	--



Collapse Part



Click on image to view full size

REF #	PART #	FP #	NAME	QTY	NOTES
24	5H80013-1	48817	Casing	1	HD

* Additional parts representing alternate configurations may be shown. Please insure that the part you are requesting matches the part number and finished part(fp) number from the product's bill of materials.

25	 3H3736 2-1	Power Exhaust Assembly		5618 2	1	
----	---	-------------------------------	--	-----------	---	---


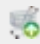
Collapse Part



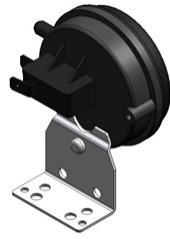
Click on image to view full size

REF #	PART #	FP #	NAME	QTY	NOTES
25	3H37362-1	56182	Power Exhaust Assembly	1	

* Additional parts representing alternate configurations may be shown. Please insure that the part you are requesting matches the part number and finished part(fp) number from the product's bill of materials.

26	 5H7503 0-3	Pressure Switch	More common replacement part	3224 0	1	
----	---	------------------------	------------------------------	-----------	---	---



Collapse Part



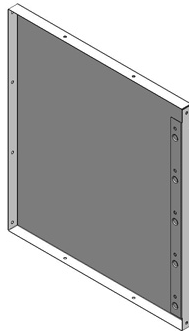
Click on image to view full size

REF #	PART #	FP #	NAME	QTY	NOTES
26	5H75030-3	32240	Pressure Switch	1	More common replacement part

* Additional parts representing alternate configurations may be shown. Please insure that the part you are requesting matches the part number and finished part(fp) number from the product's bill of materials.

27	 5H7498 8-1	Side Panel		4882 2	1	
----	---	-------------------	--	-----------	---	---



Collapse Part



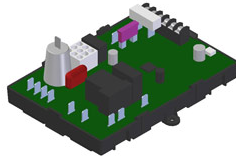
Click on image to view full size

REF #	PART #	FP #	NAME	QTY	NOTES
27	5H74988-1	48822	Side Panel	1	

* Additional parts representing alternate configurations may be shown. Please insure that the part you are requesting matches the part number and finished part(fp) number from the product's bill of materials.

28	 5H7974 9	Ignition Control		5379 4	1	
----	---	-------------------------	--	-----------	---	---



Collapse Part



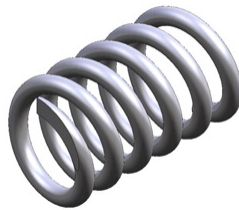
Click on image to view full size

REF #	PART #	FP #	NAME	QTY	NOTES
28	5H79749	53794	Ignition Control	1	

* Additional parts representing alternate configurations may be shown. Please insure that the part you are requesting matches the part number and finished part(fp) number from the product's bill of materials.

29	 5H5676 1	Spring		1179 6	3	
----	---	---------------	--	-----------	---	---



Collapse Part



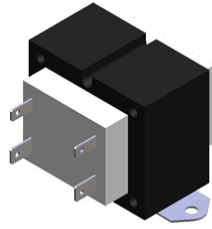
Click on image to view full size

REF #	PART #	FP #	NAME	QTY	NOTES
29	5H56761	11796	Spring	3	

* Additional parts representing alternate configurations may be shown. Please insure that the part you are requesting matches the part number and finished part(fp) number from the product's bill of materials.

30	 5H7502 9	Control Transformer	More common replaceme nt part	3223 7	1	
----	---	----------------------------	--	-----------	---	---

Collapse Part



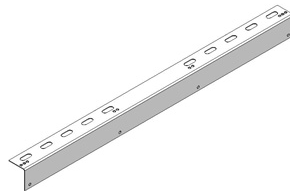
Click on image to view full size

REF #	PART #	FP #	NAME	QTY	NOTES
30	5H75029	32237	Control Transformer	1	More common replacement part

* Additional parts representing alternate configurations may be shown. Please insure that the part you are requesting matches the part number and finished part(fp) number from the product's bill of materials.

31	 5H74990	Unit Mounting Bracket		32189	2	
----	---	------------------------------	--	-------	---	---



Collapse Part



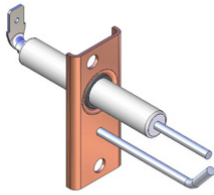
Click on image to view full size

REF #	PART #	FP #	NAME	QTY	NOTES
31	5H74990	32189	Unit Mounting Bracket	2	

* Additional parts representing alternate configurations may be shown. Please insure that the part you are requesting matches the part number and finished part(fp) number from the product's bill of materials.

40	 5H79636	Ignitor, Direct Spark	More common replacement part	48795	1	
----	---	------------------------------	------------------------------	-------	---	---

Collapse Part



Click on image to view full size

REF #	PART #	FP #	NAME	QTY	NOTES
40	5H79636	48795	Ignitor, Direct Spark	1	More common replacement part