


REF #	PART #	NAME	NOTES
0	5H79689-2160	Ignition Cable	
0	5H75185-14	Silicon Tube 1/4" ID	
0	5H74997-1	Insulation (Top, Bottom panels)	
0	5H74997-2	Insulation (side panel)	
0	5H74991	Collector Box	
0	5H74996-1	Gasket (Power Exhauster)	
0	5H80027	Control Panel	
1	5H77595	Access Panel	
2	5H75015-1	Burner	
3	5H79613	Burner Box	
5	5H74995-1	Gasket (Collector Box)	
7	5H62892-2	Deflector Blade	

9	5H75188-1	Fan	
10	5H79663-5	Fan Guard	
11	5H75011	Burner Bracket	
12	5H75002-7	Flame Rollout Switch	More common replacement part
14	5H75031	Flame Sensor	More common replacement part
15	5H77593	Front Panel	
16	5H79751	Gas Valve Natural Gas	More common replacement part
16	5H79869	Gas Valve Propane Gas	More common replacement part
17	3H37360-1001	Heat Exchanger Kit	More common replacement part
17	3H37360-2001	Heat Exchanger Kit	More common replacement part
19	5H75769-1	High Limit Switch (stalk mount)	
20	5H79193	Manifold	ASSY1/2"
21	9F10262	Motor(fan)	More common replacement part
23	5H75026-49	Orifice - Natural Gas	1 Stage,2 Stage
23	5H75026-56	Orifice - Propane Gas	1 Stage,2 Stage
24	5H80014-1	Casing	HD
25	3H37362-1	Power Exhaust Assembly	
26	5H75030-3	Pressure Switch	More common replacement part
27	5H74988-1	Side Panel	
28	5H79749	Ignition Control	
29	5H56761	Spring	
30	5H75029	Control Transformer	More common replacement part
31	5H74990	Unit Mounting Bracket	
40	5H79636	Ignitor, Direct Spark	More common replacement part



0	 5H79689-2160	Ignition Cable		48798	1	
---	------------------------------------------------------------------------------------------------	-----------------------	--	-------	---	--

Collapse Part

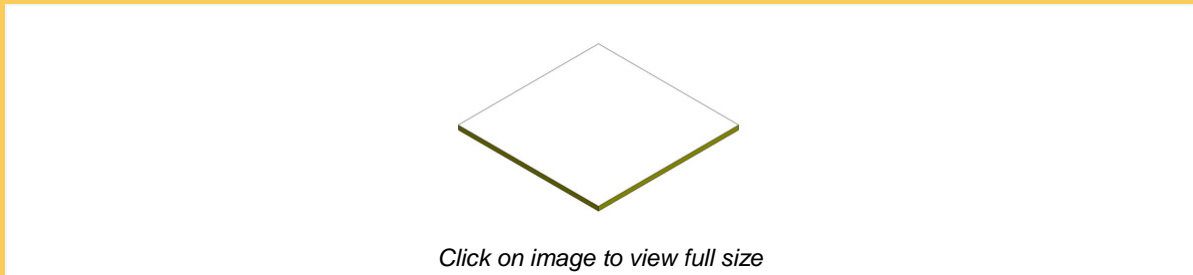


REF #	PART #	FP #	NAME	QTY	NOTES
0	5H79689-2160	48798	Ignition Cable	1	

* Additional parts representing alternate configurations may be shown. Please insure that the part you are requesting matches the part number and finished part(fp) number from the product's bill of materials.



0	 5H74997-1	Insulation (Top, Bottom panels)		48826	2	
---	---------------------------------------------------------------------------------------------	----------------------------------------	--	-------	---	--------------------------------------------------------------------------------------

Collapse Part

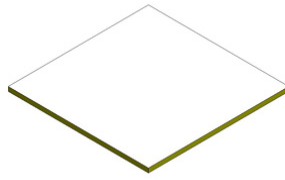


REF #	PART #	FP #	NAME	QTY	NOTES
0	5H74997-1	48826	Insulation (Top, Bottom panels)	2	

* Additional parts representing alternate configurations may be shown. Please insure that the part you are requesting matches the part number and finished part(fp) number from the product's bill of materials.

0	 5H74997-2	Insulation (side panel)		48827	1	
---	-----------------------------------------------------------------------------------------------	--------------------------------	--	-------	---	---------------------------------------------------------------------------------------

Collapse Part



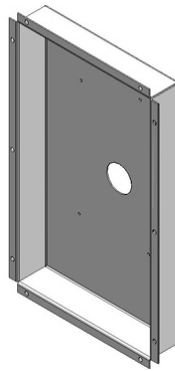
Click on image to view full size

REF #	PART #	FP #	NAME	QTY	NOTES
0	5H74997-2	48827	Insulation (side panel)	1	

* Additional parts representing alternate configurations may be shown. Please insure that the part you are requesting matches the part number and finished part(fp) number from the product's bill of materials.

0	5H74991	Collector Box		32190	1	
---	---------	----------------------	--	-------	---	--

[Collapse Part](#)



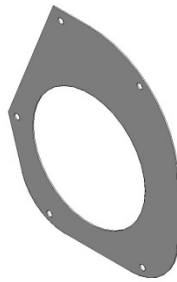
Click on image to view full size

REF #	PART #	FP #	NAME	QTY	NOTES
0	5H74991	32190	Collector Box	1	

* Additional parts representing alternate configurations may be shown. Please insure that the part you are requesting matches the part number and finished part(fp) number from the product's bill of materials.

0	5H74996-1	Gasket (Power Exhauster)		48775	1	
---	-----------	---------------------------------	--	-------	---	--

[Collapse Part](#)



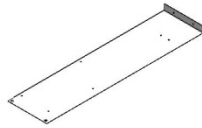
Click on image to view full size

REF #	PART #	FP #	NAME	QTY	NOTES
0	5H74996-1	48775	Gasket (Power Exhauster)	1	

* Additional parts representing alternate configurations may be shown. Please insure that the part you are requesting matches the part number and finished part(fp) number from the product's bill of materials.

0	5H80027	Control Panel		48819	1	
---	---------	----------------------	--	-------	---	--

Collapse Part



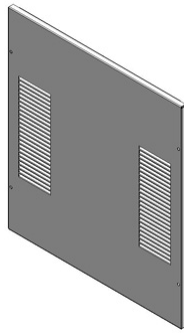
Click on image to view full size

REF #	PART #	FP #	NAME	QTY	NOTES
0	5H80027	48819	Control Panel	1	

* Additional parts representing alternate configurations may be shown. Please insure that the part you are requesting matches the part number and finished part(fp) number from the product's bill of materials.

1	5H77595	Access Panel		48400	1	
---	---------	---------------------	--	-------	---	--

Collapse Part



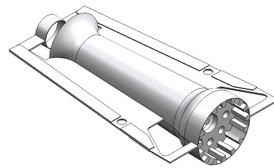
Click on image to view full size

REF #	PART #	FP #	NAME	QTY	NOTES
1	5H77595	48400	Access Panel	1	

* Additional parts representing alternate configurations may be shown. Please insure that the part you are requesting matches the part number and finished part(fp) number from the product's bill of materials.

2	 5H75015-1	Burner		48777	2	
---	---------------------------------------------------------------------------------------------	---------------	--	-------	---	-------------------------------------------------------------------------------------



Collapse Part





Click on image to view full size

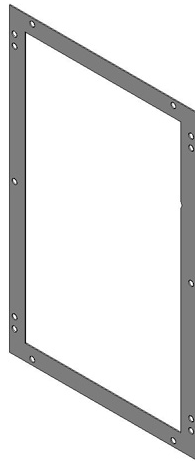
REF #	PART #	FP #	NAME	QTY	NOTES
2	5H75015-1	48777	Burner	2	

* Additional parts representing alternate configurations may be shown. Please insure that the part you are requesting matches the part number and finished part(fp) number from the product's bill of materials.

3	 5H79613	Burner Box		48791	1	
---	---------------------------------------------------------------------------------------------	-------------------	--	-------	---	---------------------------------------------------------------------------------------

5	 5H74995-1	Gasket (Collector Box)		48773	1	
---	-----------------------------------------------------------------------------------------------	-------------------------------	--	-------	---	---------------------------------------------------------------------------------------



Collapse Part



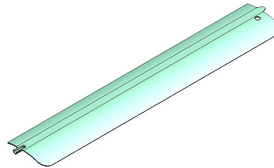
Click on image to view full size

REF #	PART #	FP #	NAME	QTY	NOTES
5	5H74995-1	48773	Gasket (Collector Box)	1	

* Additional parts representing alternate configurations may be shown. Please insure that the part you are requesting matches the part number and finished part(fp) number from the product's bill of materials.

7	 5H62892-2	Deflector Blade		11926	3	
---	---------------------------------------------------------------------------------------------	------------------------	--	-------	---	--------------------------------------------------------------------------------------



Collapse Part



Click on image to view full size

REF #	PART #	FP #	NAME	QTY	NOTES
7	5H62892-2	11926	Deflector Blade	3	

* Additional parts representing alternate configurations may be shown. Please insure that the part you are requesting matches the part number and finished part(fp) number from the product's bill of materials.

9	 5H75188-1	Fan		32249	1	
---	-----------------------------------------------------------------------------------------------	------------	--	-------	---	---------------------------------------------------------------------------------------

Collapse Part



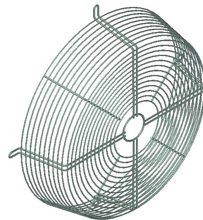
Click on image to view full size

REF #	PART #	FP #	NAME	QTY	NOTES
9	5H75188-1	32249	Fan	1	

* Additional parts representing alternate configurations may be shown. Please insure that the part you are requesting matches the part number and finished part(fp) number from the product's bill of materials.

10	 5H79663-5	Fan Guard		32256	1	
----	---------------------------------------------------------------------------------------------	------------------	--	-------	---	-------------------------------------------------------------------------------------



[Collapse Part](#)



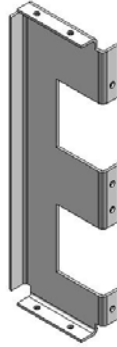
Click on image to view full size

REF #	PART #	FP #	NAME	QTY	NOTES
10	5H79663-5	32256	Fan Guard	1	

* Additional parts representing alternate configurations may be shown. Please insure that the part you are requesting matches the part number and finished part(fp) number from the product's bill of materials.

11	 5H75011	Burner Bracket		32223	1	
----	---------------------------------------------------------------------------------------------	-----------------------	--	-------	---	---------------------------------------------------------------------------------------



[Collapse Part](#)



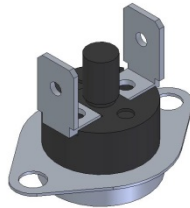
Click on image to view full size

REF #	PART #	FP #	NAME	QTY	NOTES
11	5H75011	32223	Burner Bracket	1	

* Additional parts representing alternate configurations may be shown. Please insure that the part you are requesting matches the part number and finished part(fp) number from the product's bill of materials.

12	 5H75002-7	Flame Rollout Switch	More common replacement part	56085	2	
----	---------------------------------------------------------------------------------------------	-----------------------------	------------------------------	-------	---	--------------------------------------------------------------------------------------

Collapse Part



Click on image to view full size

REF #	PART #	FP #	NAME	QTY	NOTES
12	5H75002-7	56085	Flame Rollout Switch	2	More common replacement part

* Additional parts representing alternate configurations may be shown. Please insure that the part you are requesting matches the part number and finished part(fp) number from the product's bill of materials.

14	 5H75031	Flame Sensor	More common replacement part	32242	1	
----	---------------------------------------------------------------------------------------------	---------------------	------------------------------	-------	---	---------------------------------------------------------------------------------------

Collapse Part



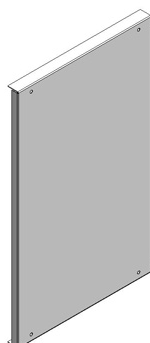
Click on image to view full size

REF #	PART #	FP #	NAME	QTY	NOTES
14	5H75031	32242	Flame Sensor	1	More common replacement part

* Additional parts representing alternate configurations may be shown. Please insure that the part you are requesting matches the part number and finished part(fp) number from the product's bill of materials.

15	5H77593	Front Panel		0	1	
----	---------	--------------------	--	---	---	--

Collapse Part



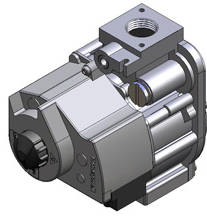
Click on image to view full size

REF #	PART #	FP #	NAME	QTY	NOTES
15	5H77593	0	Front Panel	1	

* Additional parts representing alternate configurations may be shown. Please insure that the part you are requesting matches the part number and finished part(fp) number from the product's bill of materials.

16	5H79751	Gas Valve Natural Gas	More common replacement part	53666	1	
----	---------	------------------------------	------------------------------	-------	---	--

Collapse Part



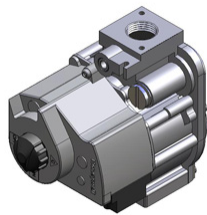
Click on image to view full size

REF #	PART #	FP #	NAME	QTY	NOTES
16	5H79751	53666	Gas Valve Natural Gas	1	More common replacement part

* Additional parts representing alternate configurations may be shown. Please insure that the part you are requesting matches the part number and finished part(fp) number from the product's bill of materials.

16	5H79869	Gas Valve Propane Gas	More common replacement part	53701	1	
----	---------	------------------------------	------------------------------	-------	---	--

[Collapse Part](#)



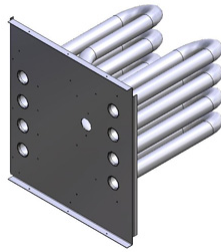
Click on image to view full size

REF #	PART #	FP #	NAME	QTY	NOTES
16	5H79869	53701	Gas Valve Propane Gas	1	More common replacement part

* Additional parts representing alternate configurations may be shown. Please insure that the part you are requesting matches the part number and finished part(fp) number from the product's bill of materials.

17	3H37360-1001	Heat Exchanger Kit	More common replacement part	53836	1	
----	--------------	---------------------------	------------------------------	-------	---	--



[Collapse Part](#)



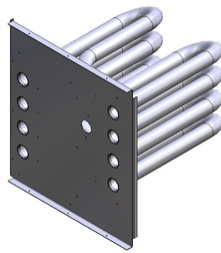
Click on image to view full size

REF #	PART #	FP #	NAME	QTY	NOTES
17	3H37360-1001	53836	Heat Exchanger Kit	1	More common replacement part

* Additional parts representing alternate configurations may be shown. Please insure that the part you are requesting matches the part number and finished part(fp) number from the product's bill of materials.

17	 3H37360-2001	Heat Exchanger Kit	More common replacement part	53849	1	
----	------------------------------------------------------------------------------------------------	---------------------------	------------------------------	-------	---	-------------------------------------------------------------------------------------



[Collapse Part](#)



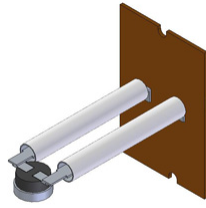
Click on image to view full size

REF #	PART #	FP #	NAME	QTY	NOTES
17	3H37360-2001	53849	Heat Exchanger Kit	1	More common replacement part

* Additional parts representing alternate configurations may be shown. Please insure that the part you are requesting matches the part number and finished part(fp) number from the product's bill of materials.

19	 5H75769-1	High Limit Switch (stalk mount)		53658	1	
----	-----------------------------------------------------------------------------------------------	----------------------------------------	--	-------	---	---------------------------------------------------------------------------------------

[Collapse Part](#)



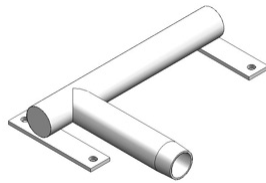
Click on image to view full size

REF #	PART #	FP #	NAME	QTY	NOTES
19	5H75769-1	53658	High Limit Switch (stalk mount)	1	

* Additional parts representing alternate configurations may be shown. Please insure that the part you are requesting matches the part number and finished part(fp) number from the product's bill of materials.

20	5H79193	Manifold	ASSY1/2"	48428	1	
----	---------	-----------------	----------	-------	---	--

Collapse Part



Click on image to view full size

REF #	PART #	FP #	NAME	QTY	NOTES
20	5H79193	48428	Manifold	1	ASSY1/2"

* Additional parts representing alternate configurations may be shown. Please insure that the part you are requesting matches the part number and finished part(fp) number from the product's bill of materials.

21	9F10262	Motor(fan)	More common replacement part	32254	1	
----	---------	-------------------	------------------------------	-------	---	--

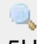

Collapse Part



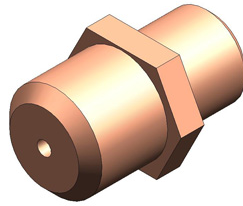
Click on image to view full size

REF #	PART #	FP #	NAME	QTY	NOTES
21	9F10262	32254	Motor(fan)	1	More common replacement part

* Additional parts representing alternate configurations may be shown. Please insure that the part you are requesting matches the part number and finished part(fp) number from the product's bill of materials.

23	 5H75026-49	Orifice - Natural Gas	1 Stage,2 Stage	32233	1	
----	----------------------------------------------------------------------------------------------	------------------------------	-----------------	-------	---	-------------------------------------------------------------------------------------



Collapse Part



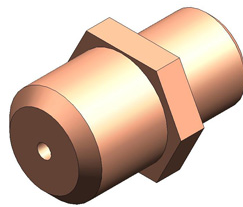
Click on image to view full size

REF #	PART #	FP #	NAME	QTY	NOTES
23	5H75026-49	32233	Orifice - Natural Gas	1	1 Stage,2 Stage

* Additional parts representing alternate configurations may be shown. Please insure that the part you are requesting matches the part number and finished part(fp) number from the product's bill of materials.

23	 5H75026-56	Orifice - Propane Gas	1 Stage,2 Stage	53733	2	
----	------------------------------------------------------------------------------------------------	------------------------------	-----------------	-------	---	---------------------------------------------------------------------------------------

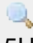
Collapse Part



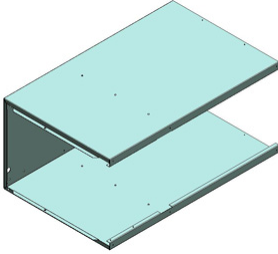
Click on image to view full size

REF #	PART #	FP #	NAME	QTY	NOTES
23	5H75026-56	53733	Orifice - Propane Gas	2	1 Stage,2 Stage

* Additional parts representing alternate configurations may be shown. Please insure that the part you are requesting matches the part number and finished part(fp) number from the product's bill of materials.

24	 5H80014-1	Casing	HD	0	1	
----	---------------------------------------------------------------------------------------------	---------------	----	---	---	-------------------------------------------------------------------------------------

[Collapse Part](#)



Click on image to view full size

REF #	PART #	FP #	NAME	QTY	NOTES
24	5H80014-1	0	Casing	1	HD

** Additional parts representing alternate configurations may be shown. Please insure that the part you are requesting matches the part number and finished part(fp) number from the product's bill of materials.*

25	 3H37362-1	Power Exhaust Assembly		56182	1	
----	---------------------------------------------------------------------------------------------	-------------------------------	--	-------	---	-------------------------------------------------------------------------------------



[Collapse Part](#)



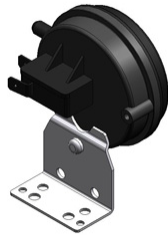
Click on image to view full size

REF #	PART #	FP #	NAME	QTY	NOTES
25	3H37362-1	56182	Power Exhaust Assembly	1	

** Additional parts representing alternate configurations may be shown. Please insure that the part you are requesting matches the part number and finished part(fp) number from the product's bill of materials.*

26	 5H75030-3	Pressure Switch	More common replacement part	32240	1	
----	-----------------------------------------------------------------------------------------------	------------------------	------------------------------	-------	---	---------------------------------------------------------------------------------------

[Collapse Part](#)



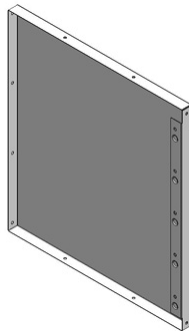
Click on image to view full size

REF #	PART #	FP #	NAME	QTY	NOTES
26	5H75030-3	32240	Pressure Switch	1	More common replacement part

* Additional parts representing alternate configurations may be shown. Please insure that the part you are requesting matches the part number and finished part(fp) number from the product's bill of materials.

27	 5H74988-1	Side Panel		48822	1	
----	---------------------------------------------------------------------------------------------	-------------------	--	-------	---	-------------------------------------------------------------------------------------



Collapse Part



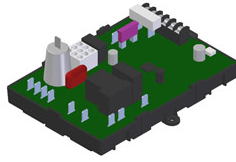
Click on image to view full size

REF #	PART #	FP #	NAME	QTY	NOTES
27	5H74988-1	48822	Side Panel	1	

* Additional parts representing alternate configurations may be shown. Please insure that the part you are requesting matches the part number and finished part(fp) number from the product's bill of materials.

28	 5H79749	Ignition Control		53794	1	
----	---------------------------------------------------------------------------------------------	-------------------------	--	-------	---	---------------------------------------------------------------------------------------

Collapse Part



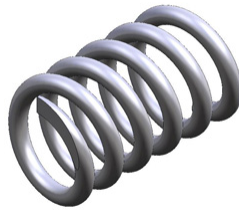
Click on image to view full size

REF #	PART #	FP #	NAME	QTY	NOTES
28	5H79749	53794	Ignition Control	1	

* Additional parts representing alternate configurations may be shown. Please insure that the part you are requesting matches the part number and finished part(fp) number from the product's bill of materials.

29	 5H56761	Spring		11796	3	
----	-------------------------------------------------------------------------------------------	---------------	--	-------	---	-------------------------------------------------------------------------------------



[Collapse Part](#)



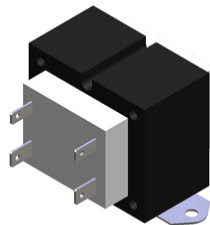
Click on image to view full size

REF #	PART #	FP #	NAME	QTY	NOTES
29	5H56761	11796	Spring	3	

* Additional parts representing alternate configurations may be shown. Please insure that the part you are requesting matches the part number and finished part(fp) number from the product's bill of materials.

30	 5H75029	Control Transformer	More common replacement part	32237	1	
----	---------------------------------------------------------------------------------------------	----------------------------	------------------------------	-------	---	---------------------------------------------------------------------------------------

[Collapse Part](#)



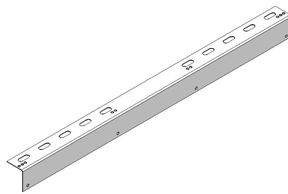
Click on image to view full size

REF #	PART #	FP #	NAME	QTY	NOTES
30	5H75029	32237	Control Transformer	1	More common replacement part

* Additional parts representing alternate configurations may be shown. Please insure that the part you are requesting matches the part number and finished part(fp) number from the product's bill of materials.

31	 5H74990	Unit Mounting Bracket		32189	2	
----	-------------------------------------------------------------------------------------------	------------------------------	--	-------	---	-------------------------------------------------------------------------------------



Collapse Part



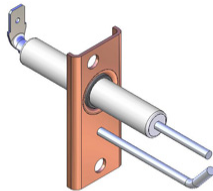
Click on image to view full size

REF #	PART #	FP #	NAME	QTY	NOTES
31	5H74990	32189	Unit Mounting Bracket	2	

* Additional parts representing alternate configurations may be shown. Please insure that the part you are requesting matches the part number and finished part(fp) number from the product's bill of materials.

40	 5H79636	Ignitor, Direct Spark	More common replacement part	48795	1	
----	---------------------------------------------------------------------------------------------	------------------------------	------------------------------	-------	---	---------------------------------------------------------------------------------------

Collapse Part



Click on image to view full size

REF #	PART #	FP #	NAME	QTY	NOTES
40	5H79636	48795	Ignitor, Direct Spark	1	More common replacement part

* Additional parts representing alternate configurations may be shown. Please insure that the part you are requesting matches the part number and finished part(fp) number from the product's bill of materials.

