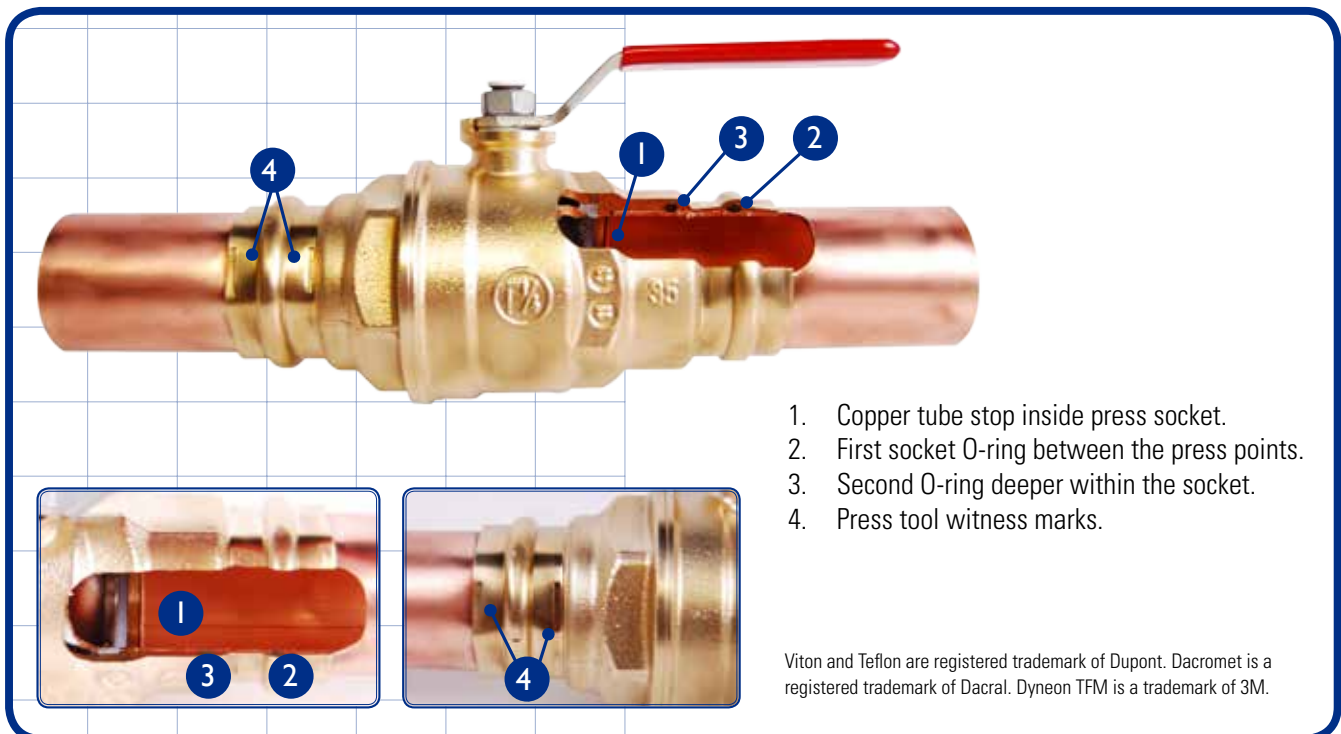


PRESS FITTING BALL VALVES

P-200 LegendPress™ MAINTENANCE-FREE Ball Valve

The Legend P-200 series of press ball valves features the same reliability you've come to expect from the T/S-1001, the preferred ball valve for thousands of plumbing and heating contractors. The P-200NL No Lead LegendPress™ Ball Valve has the same proven Viton® O-ring stem design that eliminates the need for a packing gland and nut. LegendPress™ reduces labor and call backs. Compatible with VUS/XL-C profile jaws. The P-200NL press sockets have greater depth for stabilizing the copper when pressing which assures a solid connection. The press sockets have two EPDM O-rings for added assurance that a seal is made when pressed. Corrosion resistant Dacromet® coated steel handle, with vinyl cover. LegendPress™ is available in several configurations: Press x Press, MNPT x Press, FNPT x Press and Union x Press. The P-200 is constructed of UNS C37700 forged brass. The P-200NL is constructed of no lead binary brass. P-200 is compatible with copper ring adapters, has a single EPDM O-ring and beveled brass socket edge instead of a steel grip ring that could move and interfere with a proper press. (*1/2" - 2" VUS & 2 1/2" - 4" XLC).

- Saturated Steam (WSP): Not suitable for steam applications.
- Cold Working Pressure (CWP): 600 PSI (1/2" & 3/4"); 500 PSI (1" - 1-1/4"); 400 PSI (1-1/2" - 3"); 300 PSI (4").
- Maximum Service Temperature: 230° F
- Threaded end connections comply with ANSI/ASME B1.20.1



P-200 LegendPress™ Press x Press

Forged Brass Full Port Ball Valve



Available in sizes and configurations: 1/2" - 2", Press x Press.

P-200 LegendPress™ Large Diameter, Press x Press

Forged Brass Large Diameter Full Port Ball Valve



Large diameter and deep sockets for stability. Available in sizes and configurations: 2-1/2", 3" & 4", Press x Press.

P-200NL LegendPress™ No Lead Press x Press



No Lead Forged Brass Full Port Ball Valve



Third-party certified ANSI/NSF 61-G, NSF. Available in sizes and configurations: 1/2" - 2", Press x Press.

P-200NL LegendPress™ No Lead Large Diam. Press



No Lead Forged Brass Large Diameter Full Port Ball Valve



Large diameter and deep sockets for stability. Third-party certified ANSI/NSF 61-G, NSF. Available in sizes and configurations: 2-1/2", 3" & 4", Press x Press.

P-200 LegendPress™ with T-handle Press x Press

Forged Brass Full Port Ball Valve



Available in sizes and configurations: 1/2" - 1-1/4", Press x Press. Pre-assembled extended plastic T-Handle, with discs: Red (hot), Blue (cold), and Purple (reclaimed).

P-200 LegendPress™ MNPT x Press

Forged Brass Full Port Ball Valve



Available in sizes and configurations: 1/2" - 2", MNPT x Press.

P-200 LegendPress™ FNPT x Press

Forged Brass Full Port Ball Valve



Available in sizes and configurations: 1/2" - 2", FNPT x Press.

P-200 LegendPress™ Union x Press

Forged Brass Full Port Ball Valve



Available in sizes and configurations: 1/2" - 1-1/4", MNPT x Press.

SUBMITTAL SHEET

JOB NAME _____ ITEM TAG _____

JOB LOCATION _____ PART NUMBER _____

CONTRACTOR _____ DATE _____

ENGINEER APPROVAL _____ DATE _____

LEAD-FREE FULL PORT PRESS BALL VALVE

P-200NL LegendPress™

Lead-free design is suitable for all no-lead potable water installations, in full compliance of all lead-free plumbing laws.

Press-to-connect end connections are designed for installation onto ASTM B88 types K, L and M hard-drawn copper tubing. See insertion depth chart below.

Deeper tubing sockets and dual O-rings at each connection, provide extra stability during the pressing process as well as enhanced sealing.

Press-type end connections eliminate the need for soldering, reducing labor and materials costs and eliminating the fire hazard associated with the process.

Compatible with commercially-available VUS profile jaws.

Oversized lever handle with per-drilled tag hole is ideal for commercial plumbing applications.

Available in sizes 1/2" to 2" in the Press x Press configuration.

Working Pressure, Non-Shock (PSI)

Cold working pressure (CWP):
 1/2" and 3/4": 600 p.s.i.
 1" and 1-1/4": 500 p.s.i.
 1-1/2" and 2": 400 p.s.i.

Saturated Steam (WSP):
 Not suitable for steam service
Maximum service temp: 230°F



**Pictured:
P-200NL**

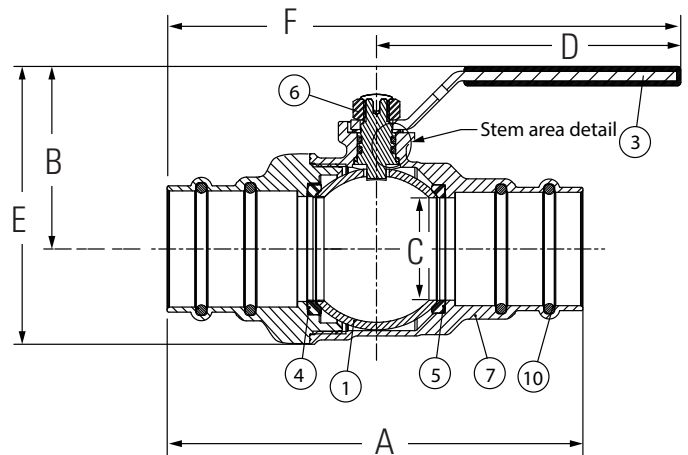
- Third-party tested and certified in compliance with U.S. Federal Public Law 111-380 (National lead-free plumbing law.)

- NSF certified to NSF 61-G.

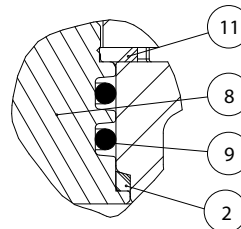
- Valve construction conforms to MSS SP-110; press-type end connections are currently excluded from this Standard.



- Manufactured in an ISO accredited facility.



**Pictured:
P-200NL LegendPress™
cut-away**



**Pictured:
P-200NL LegendPress™
Stem area detail**

MATERIAL SPECIFICATION

PART	MATERIAL	SPECIFICATION
1 Ball	Chrome-plated lead-free forged brass	CW510L UNS C28500
2 Thrust washer	TFM PTFE	Dyneon*
3 Handle	Dacromet coated steel	ASTM A510 UNS G10060
4 End adapter	Lead-free forged brass	CW510L UNS C28500
5 Seats (2)	TFM PTFE	Dyneon*
6 Handle nut	Dacromet coated steel with PVC resin lock	ASTM A510 UNS G10060
7 Body	Lead-free forged brass	CW510L UNS C28500
8 Stem	Chrome-plated lead-free forged brass	CW510L UNS C28500
9 Stem O-rings (2)	Fluoroelastomer	Viton**
10 Socket O-rings: 4 total	EPDM	Commercial grade
11 Anti-friction washer	TFM PTFE	Dyneon*

*Dyneon TFM is a registered trademark of the 3M Company.

**Viton is a registered trademark of DuPont Company.

DIMENSIONS

Size	A	B	C	D	E	F
1/2" Press x Press	3.90	1.43	0.59	3.04	2.05	5.00
3/4" Press x Press	4.51	1.90	0.79	3.74	2.68	6.00
1" Press x Press	4.77	2.06	1.00	3.74	3.01	6.13
1-1/4" Press x Press	5.08	2.24	1.26	3.74	3.40	6.28
1-1/2" Press x Press	5.83	2.77	1.58	5.38	4.15	8.30
2" Press x Press	7.33	3.08	2.00	5.38	4.76	9.15

LegendPress™ Tubing Insertion Depth

Nominal Tubing Size:	1/2"	3/4"	1"	1-1/4"	1-1/2"	2"
Insertion Depth: In.	1-3/8"	1-9/16"	1-9/16"	1-9/16"	1-3/4"	2-3/16"
MM	35	40	40	40	45	55

(See P-200NL Large Diameter Submittal for sizes 2 1/2" to 4" sizes).