



Guardian

EMERGENCY EYEWASH & SHOWER TECHNOLOGY

Installation, Operation and Maintenance Guide:

Eyewash/Drench Hose Units
Drench Hose Units



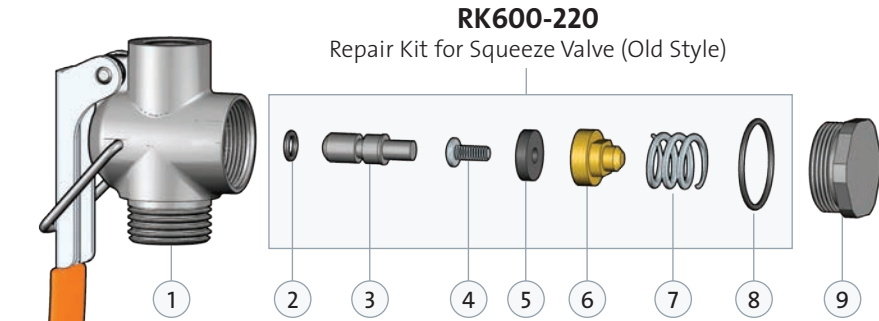
Guardian Equipment is the world's leading manufacturer of emergency eyewash and shower technology and related products for use in industrial facilities, commercial institutions, and many other applications where eye and body protection is a concern. As such, Guardian drench hose units and dual purpose eyewash/drench hose units have been installed in thousands of facilities over the past thirty years. These units are relied upon to instantly flush the user's eyes, face or body should a chemical spill occur.

Like all Guardian products, our eyewash/drench hose and drench hose units are designed, engineered and manufactured for reliable performance and exceptional durability. However, like all of our products, they must be installed correctly, operated properly, inspected regularly and maintained periodically to assure that they will be available when needed. Guardian has developed this Installation, Operation and Maintenance Guide to assist users and facilities maintenance personnel in these activities.



○ **AP600-220-3LC** Squeeze Valve with Locking Clip (Old Style). 3/8" NPT Female Outlet.

Note: Prior to 2002, Guardian manufactured the AP600-220-3 squeeze valve. This valve had an integral (non-removable) valve seat. In 2002, Guardian replaced this valve with the AP600-240 valve with a replaceable stainless steel valve seat. All eyewash/drench hose units and drench hose units manufactured after 2002 utilize the AP600-240 squeeze valve.



ITEM	PART NO.	DESCRIPTION
1	600-220-3LC	Valve Body
2	600-228R	Valve Plunger O-Ring (pkg of 6)
3	600-221R	Valve Plunger (pkg of 6)
4	550-064R	Valve Disc Screw (pkg of 6)
5	BNV040R	Valve Disc (pkg of 6)

ITEM	PART NO.	DESCRIPTION
6	600-242R	Valve Disc Holder (pkg of 6)
7	600-223A-R	Spring (pkg of 6)
8	600-224R	Bonnet O-Ring (pkg of 6)
9	600-225R	Valve Bonnet (pkg of 6)

○ **AP600-240LC** Squeeze Valve with Locking Clip (New Style). 3/8" NPT Female Outlet.

Note: Prior to 2002, Guardian manufactured the AP600-220-3 squeeze valve. This valve had an integral (non-removable) valve seat. In 2002, Guardian replaced this valve with the AP600-240 valve with a replaceable stainless steel valve seat. All eyewash/drench hose units and drench hose units manufactured after 2002 utilize the AP600-240 squeeze valve.



ITEM	PART NO.	DESCRIPTION
1	600-240LC	Valve Body
2	600-250R	Valve Seat O-Ring (pkg of 6)
3	600-249R	Valve Seat (pkg of 6)
4	600-228R	Valve Plunger O-Ring (pkg of 6)
5	600-241R	Valve Plunger (pkg of 6)

ITEM	PART NO.	DESCRIPTION
6	BNV040R	Valve Disc (pkg of 6)
7	600-242R	Valve Disc Holder (pkg of 6)
8	600-243A-R	Spring (pkg of 6)
9	600-244R	Bonnet O-Ring (pkg of 6)
10	600-245R	Valve Bonnet (pkg of 6)



AP350-100-096

8 ft. reinforced PVC hose for eyewash/drench hose and drench hose units. 3/8" NPT male swivel inlet, 3/8" NPT male outlet.



350-007

Molded nylon handle for eyewash/drench hose and drench hose units.



AP350-011G

Molded nylon deck flange for eyewash/drench hose and drench hose units. 1" IPS mounting shank.



AP150-003A

45 degree panel flange for eyewash/drench hose and drench hose units. 3/4" IPS mounting shank.



AP150-051C

Wall Bracket for Eyewash/Drench Hose Units



150-062A

Wall Hook for Drench Hose Units



AP150-084

Wall Bracket for Eyewash/Drench Hose Units



Emergency Eyewash/Drench Hose

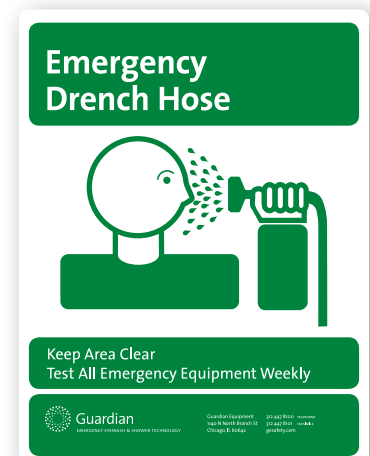


Keep Area Clear
Test All Emergency Equipment Weekly

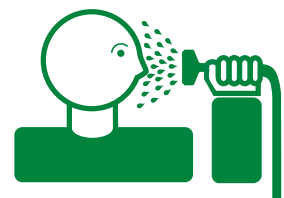


250-010G

8 1/2" x 11" plastic sign



Emergency Drench Hose



Keep Area Clear
Test All Emergency Equipment Weekly

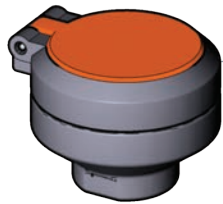


250-006G

8 1/2" x 11" plastic sign



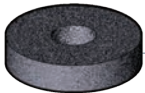
○ GS-Plus™ Spray Head



AP470-001
GS-Plus™ Spray Head.
1 1/2" Diameter.
1/4" NPT female inlet.



AP470-002ORG-R
1 1/2" Diameter Spray
Cover with "Flip Top"
Dust Cover (pkg of 2)



470-004R
1 1/8" Diameter Foam
Filter (pkg of 6)

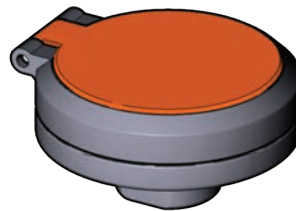


470-001R
GS-Plus Spray Head
Body (pkg of 6)



470-005R
1.6 Gallon Per Minute
Flow Control
(pkg of 6)

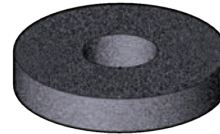
○ FS-Plus™ Spray Head



AP470-021
FS-Plus™ Spray Head.
2 1/8" Diameter.
1/4" NPT female inlet.



AP470-022RG-R
2 1/8" Diameter Spray
Cover with "Flip Top"
Dust Cover (pkg of 2)



470-024R
1 3/4" Diameter Foam
Filter (pkg of 6)



470-021R
FS-Plus Spray Head
Body (pkg of 6)



470-025R
3.2 Gallon Per Minute
Flow Control (pkg of 6)