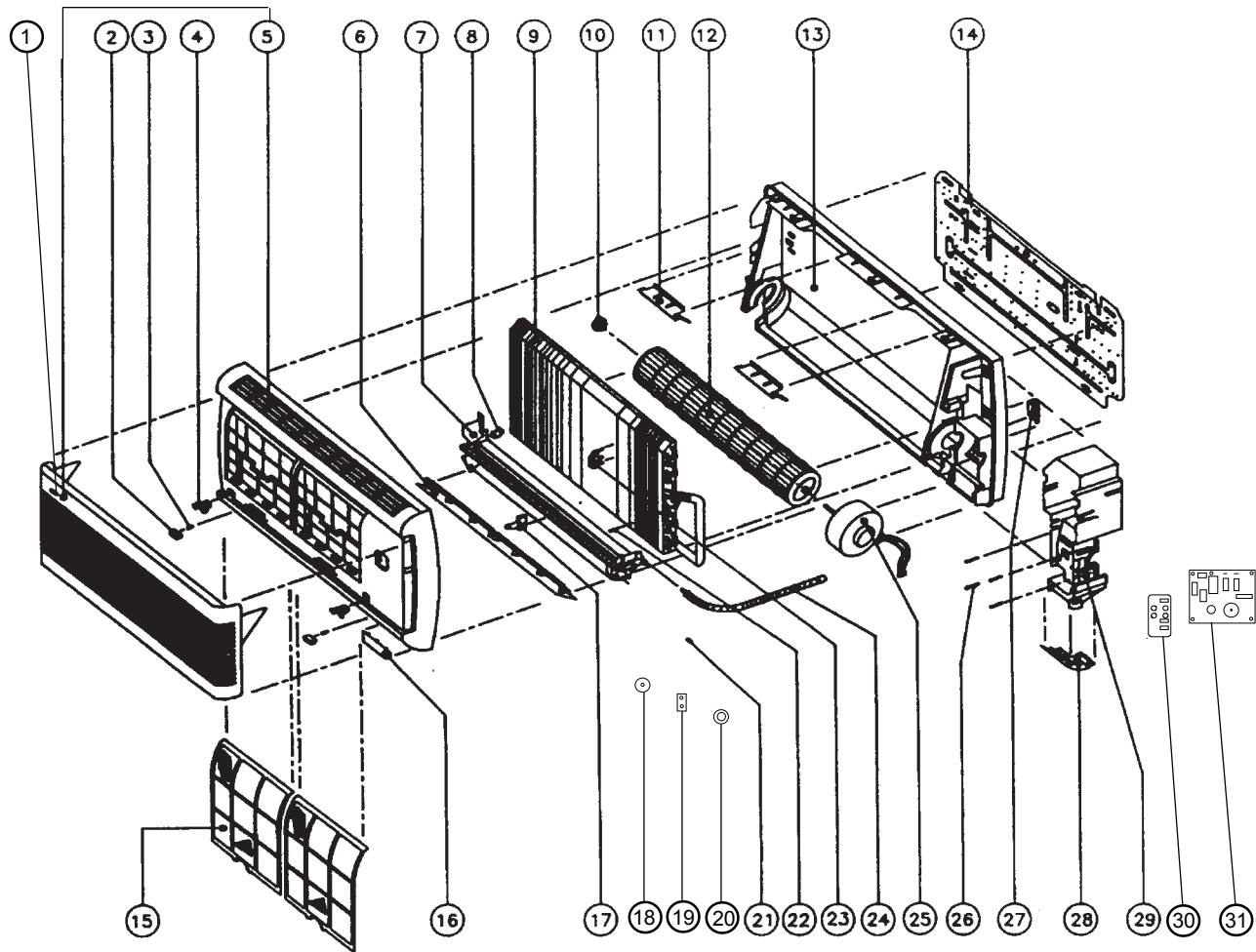


REPAIR PARTS

MODEL: WMC SERIES
WALL MOUNT AIR HANDLER

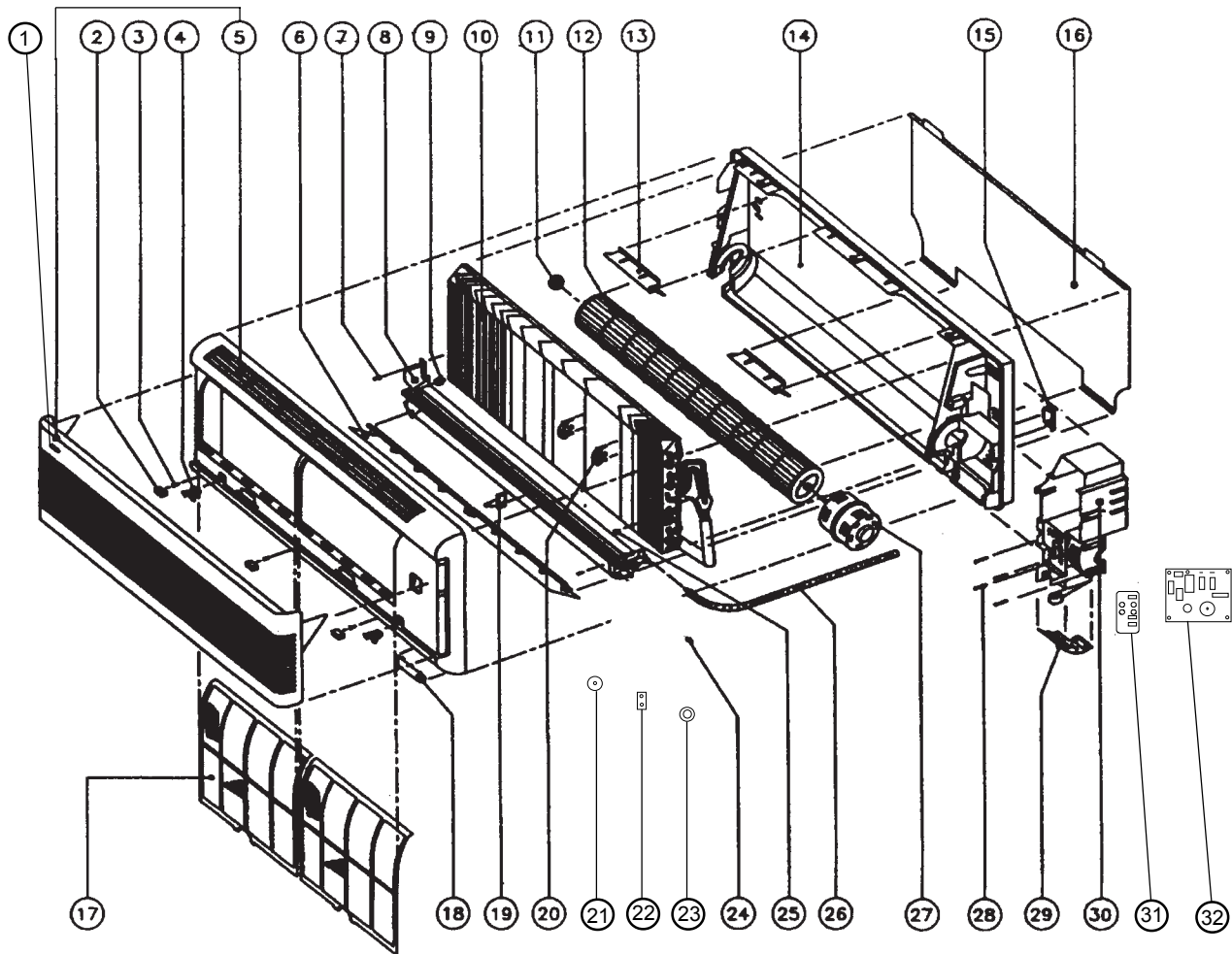


MODEL: WMC12-1/2



PARTS NAME	PARTS NO.	PARTS NAME	PARTS NO.
1. GOODMAN LOGO	B11000-73	18. STEPPING MOTOR 50/60 HZ.	B11000-72
2. SCREW CAP (S3G093BR4)	B11000-81	19. LOW VOLTAGE TRANSFORMER	B1100-141
3. FRONT FRAME SCREW	B11000-82	20. FAN CAPACITOR 60 HZ.	B11000-74
4. PRESS LOCK	B11000-83	FAN CAPACITOR 50 HZ.	B11000-75
5. FRONT FRAME / GRILLE	B11000-80	21. STEPPING SCREW (C3F069AQ6)	B11000-99
6. AIR DISCHARGE LOUVER	B11000-84	22. EARTH WIRE SCREW	B1100-100
7. AIR DISC. HOUSING ASSY.	B11000-85	23. THERMISTER HOLDER	B1100-101
8. DRAIN PIPE CAP	B11000-86	24. DRAIN HOLE ASSY.	B1100-102
9. COIL ASSEMBLY	B11000-87	25. FAN MOTOR 50 HZ. (T-05A4P10W)	B1100-137
10. BLOWER BEARING ASSY	B11000-88	FAN MOTOR 60 HZ. (T-05B4P10)	B1100-103
11. BACK HOUSING COVER	B11000-89	26. CONTROL BOX SCREW	B1100-104
12. CROSSFLOW FAN	B11000-90	27. PIPING CLAMP	B1100-105
13. BACK HOUSING	B11000-91	28. LED DISPLAY HOLDER	B1100-106
14. MOUNTING PLATE	B11000-92	29. CONTROL BOX CASING	B1100-107
15. FILTER	B11000-93	30. HANDSET CONTROL (S3E047G96)	B1100-108
16. LED DISPLAY CAP	B11000-94	31. PCB (SET OF 3),(S3E047C96)	B1100-133
17. AIR DISC. LOUVER CLIP	B11000-95		

MODEL: WMC18-1/2, AND WMC24-1/2



PARTS NAME	PARTS NO.	PARTS NAME	PARTS NO.
1. GOODMAN LOGO	B11000-73	19. AIR DISC.LOUVER CLIP	B1100-121
2. SCREW CAP (S3G093A78)	B11000-140	20. THERMISTER HOLDER	B1100-122
3. FRONT FRAME SCREW	B11000-82	21. STEPPING MOTOR 50/60 HZ.	B11000-72
4. PRESS LOCK	B11000-83	22. LOW VOLTAGE TRANSFORMER	B1100-141
5. FRONT FRAME / GRILLE	B1100-118	23. FAN CAPACITOR 60 HZ.	B11000-74
6. AIR DISCHARGE LOUVER	B1100-117	FAN CAPACITOR 50 HZ.	B11000-75
7. A/D HOUSING SCREW	B1100-102	24. STEPPING SCREW (C3F069AQ6)	B11000-99
8. A/D HOUSING ASSY.	B1100-116	25. EARTH WIRE SCREW	B1100-100
9. DRAIN PIPE CAP	B11000-86	26. DRAIN HOLE ASSY.	B1100-123
10. COIL ASSY.(WMC18)	B1100-114	27. FAN MOTOR (18 / 50 HZ.), (S3A003VT6)	B1100-124
COIL ASSY.(WMC24)	B1100-115	FAN MOTOR (24 / 50 HZ.), (S3A003U15)	B1100-139
11. BLOWER BEARING ASSY	B11000-88	FAN MOTOR (18 / 60 HZ.), (S3A003CT6)	B1100-138
12. CROSSFLOW FAN ASSY	B1100-113	FAN MOTOR (24 / 60 HZ.), (S3A010CE4)	B1100-125
13. BACK HOUSING COVER	B1100-112	28. CONTROL BOX SCREW	B1100-104
14. BACK HOUSING	B1100-111	29. LED DISPLAY HOLDER	B1100-106
15. PIPING CLAMP	B1100-105	30. CONTROL BOX CASING	B1100-126
16. MOUNTING PLATE	B1100-110	31. HANDSET CONTROL (S3E047G96)	B1100-108
17. FILTER	B1100-119	32. PCB (SET OF 3), (S3E047D96)	B1100-134
18. LED DISPLAY CAP	B1100-120		