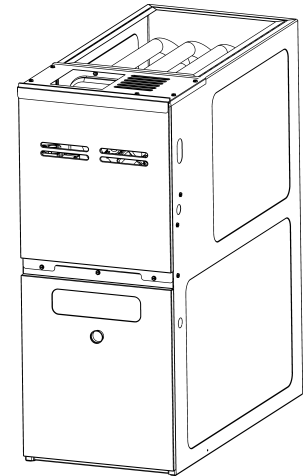




# REPAIR PARTS

## GMVC 80% High Efficient Furnace

GMVC800603BNAA  
GMVC800603BNAB  
GMVC800603BXAA  
GMVC800603BXAB  
GMVC800604BNAA  
GMVC800604BNAB  
GMVC800604BXAA  
GMVC800604BXAB  
GMVC800803BNAA  
GMVC800803BNAB  
GMVC800804CNAA  
GMVC800804CNAB  
GMVC800804CXAA  
GMVC800804CXAB  
GMVC800805CNAA  
GMVC800805CNAB  
GMVC800805CXAA  
GMVC800805CXAB  
GMVC800805DNAA  
GMVC800805DNAB  
GMVC800805DXAA  
GMVC800805DXAB  
GMVC801005CNAA  
GMVC801005CNAB  
GMVC801005CXAA  
GMVC801005CXAB



This manual is to be used by qualified technicians only.

This manual replaces RP-G2332

© 2019 - 2020 Goodman Manufacturing Company, L.P. ♦ 5151 San Felipe St, Suite 500 ♦ Houston, TX 77056

## Important Information

---

### Index

Functional Parts List .....	3
Illustration and Parts .....	4 - 9

*Views shown are for parts illustrations only, not servicing procedures*

#### Text Codes:

AR - As Required

NA - Not Available

NS - Not Shown

00000000 - See Note

QTY - Quantity    Example (QTY 3) (If Quantity not shown, Quantity = 1)

M - Model        Example (M1) (If M Code not shown, then part is used on all Models)

#### Expanded Model Nomenclature:

Example M1 - Model#1 M2 - Model#2 M3 - Model#3
---

Goodman Manufacturing Company, L.P. is not responsible for personal injury or property damage resulting from improper service. Review all service information before beginning repairs.

Warranty service must be performed by an authorized technician, using authorized factory parts. If service is required after the warranty expires, Goodman Manufacturing Company, L.P. also recommends contacting an authorized technician and using authorized factory parts.

Goodman Manufacturing Company, L.P. reserves the right to discontinue, or change at any time, specifications or designs without notice or without incurring obligations.

For assistance within the U.S.A. contact:

Homeowner Support

Goodman Manufacturing Company, L.P.

19001 Kermier Road

Waller, Texas 77484

877-254-4729-Telephone

713-863-2382-Facsimile

For assistance outside the U.S.A. contact:

International Division

Goodman Manufacturing Company, L.P.

19001 Kermier Road

Waller, Texas 77484

713-861-2500-Telephone

713-863-2382-Facsimile

# Functional Parts

## Part

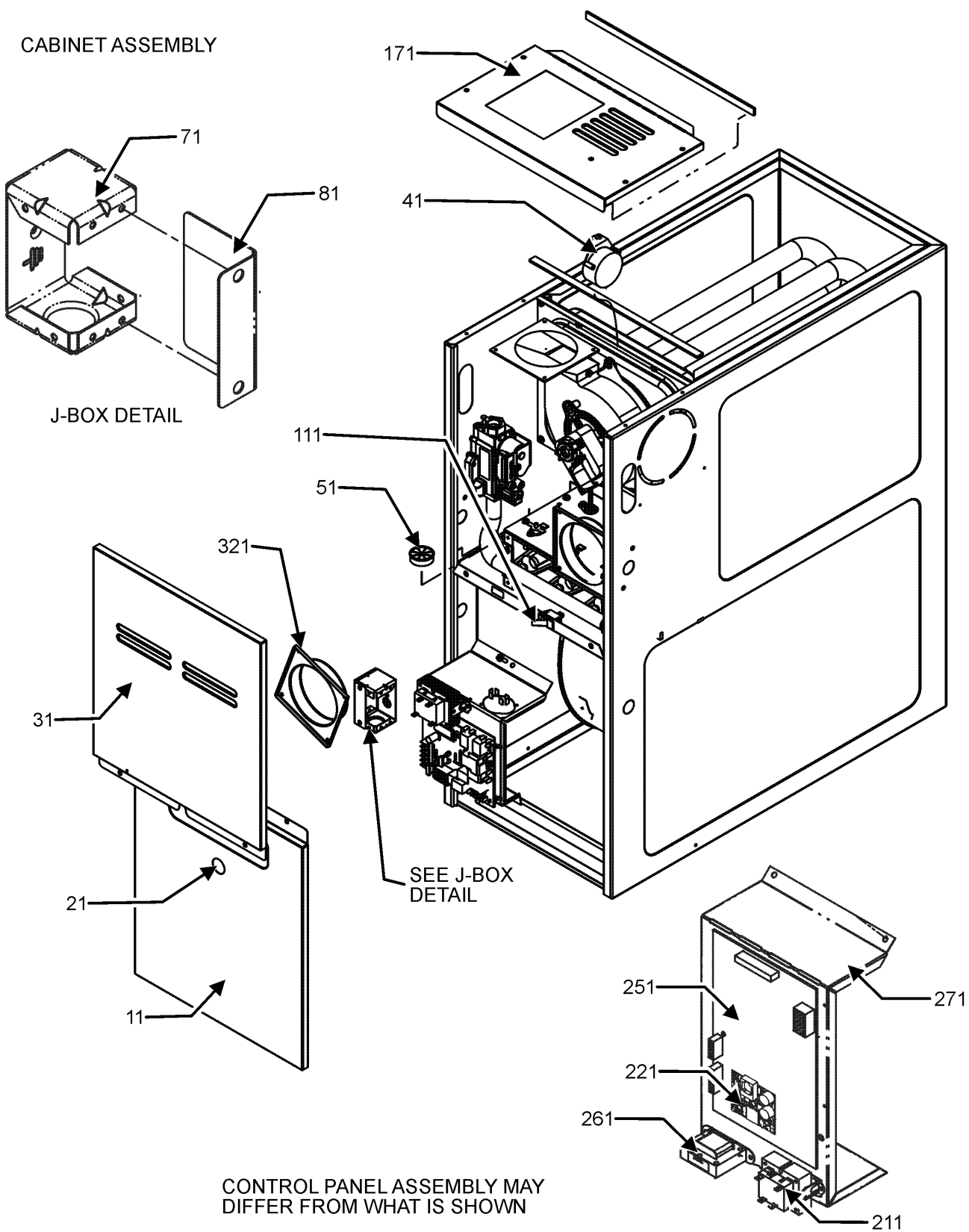
**No:**                      **Description:**

		Expanded Model Nomenclature
20162904	*PRIMARY LIMIT-TEMPERATURE CONTROL (M9, M10, M11, M12, M13, M14, M19, M20, M21, M22) *Refer to service bulletin SF-054	M1 - GMVC800603BNAA M2 - GMVC800603BNAB
0130F00795	AIR PRESSURE SWITCH (M1, M2, M3, M4, M19, M20, M21, M22)	M3 - GMVC800603BXAA M4 - GMVC800603BXAB
0130F00791	AIR PRESSURE SWITCH (M23, M24, M25, M26)	M5 - GMVC800604BNAA M6 - GMVC800604BNAB
0130F00792	AIR PRESSURE SWITCH (M5, M6, M7, M8, M9, M10, M15, M16, M17, M18)	M7 - GMVC800604BXAA M8 - GMVC800604BXAB
0130F00794	AIR PRESSURE SWITCH (M11, M12, M13, M14)	M9 - GMVC800803BNAA M10 - GMVC800803BNAB
SHARED DATA	Available thru CoolCloud HVAC app.	M11 - GMVC800804CNAA M12 - GMVC800804CNAB
0130F00010	FLAME SENSOR	M13 - GMVC800804CXAA M14 - GMVC800804CXAB
0151M00027	GAS VALVE	M15 - GMVC800805CNAA M16 - GMVC800805CNAB
0130M00141	INDUCTOR, 5.9 AMPS (GMPE100-4) (M5, M6, M7, M8, M11, M12, M13, M14, M15, M16, M17, M18, M19, M20, M21, M22, M23, M24, M25, M26)	M17 - GMVC800805CXAA M18 - GMVC800805CXAB
10690402	INTERLOCK SWITCH	M19 - GMVC800805DNAA M20 - GMVC800805DNAB
0130F00038	LIMIT, PRIMARY 120 LT BLUE	M21 - GMVC800805DXAA M22 - GMVC800805DXAB
0130M00063	LIMIT, PRIMARY, 140, GOLD (M5, M6, M7, M8, M15, M16, M17, M18)	M23 - GMVC801005CNAA M24 - GMVC801005CNAB
20162903	LIMIT-BLUE (M1, M2, M3, M4)	M25 - GMVC801005CXAA M26 - GMVC801005CXAB
20162905	LIMIT-YELLOW (M23, M24, M25, M26)	
10123529	MANUAL RESET R.O.S. LIMIT (QTY 2)	
0131M00270	MOTOR, 1/2 HP, SERIAL ECM (M1, M2, M3, M4, M9, M10, M11, M12, M13, M14)	
0131M00271	MOTOR, 3/4 HP, SERIAL ECM (M5, M6, M7, M8, M15, M16, M17, M18, M19, M20, M21, M22, M23, M24, M25, M26)	
0131M00781P	MOTOR, VENT 2-STAGE	
PCBKF107	PCB, CONTROL BOARD	
PCBCM100	PCB, CONTROL	
0130F00008	SINI IGNITOR	
0130M00140	TRANSFORMER,(120V TO 24V,40VA,	

## SPECIAL PARTS

0161F00007                      NAMEPLATE, GOODMAN

# Cabinet and Control Panel Assembly



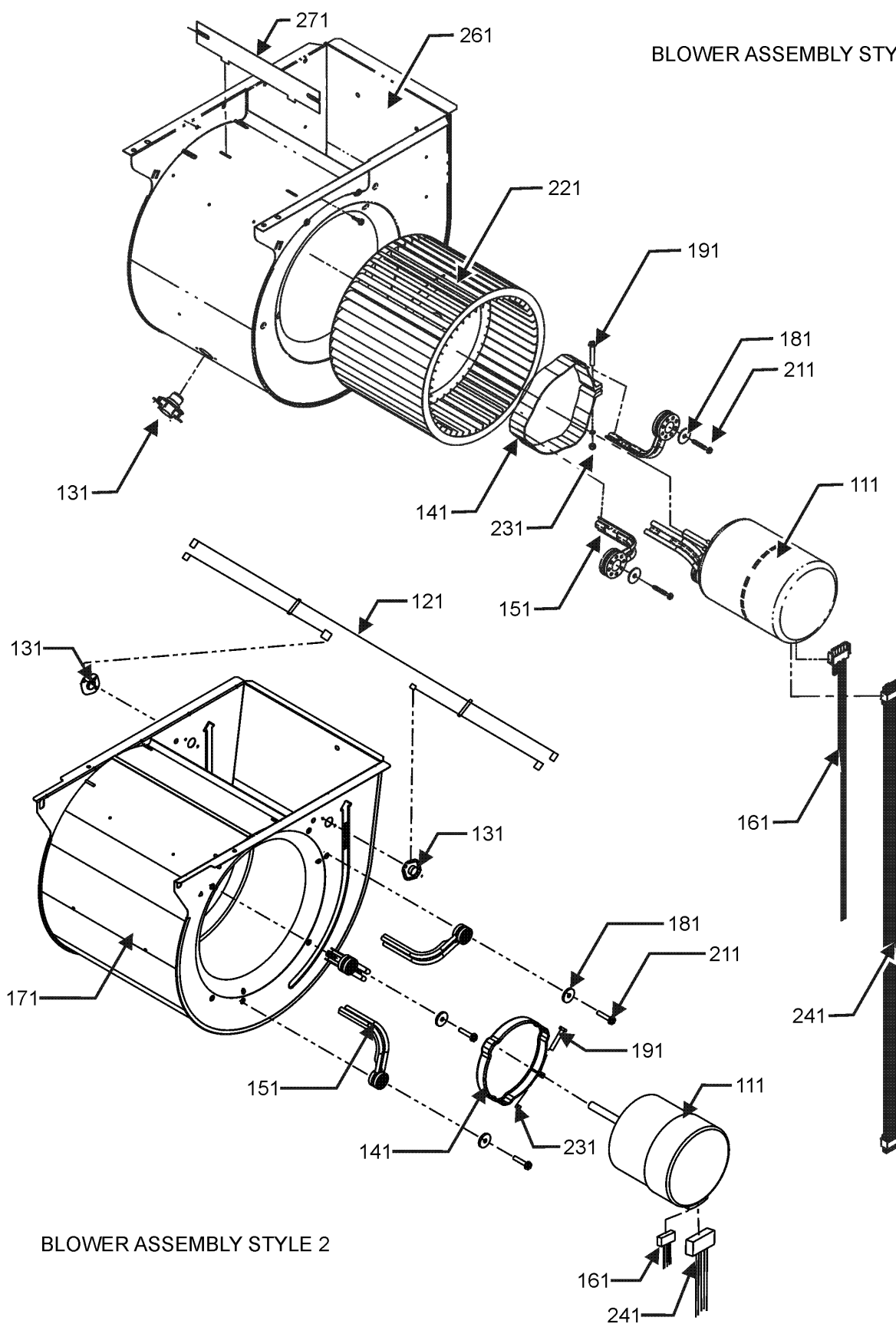
CONTROL PANEL ASSEMBLY

# Cabinet and Control Panel Assembly

Ref. Part No: No:	Description:	Ref. Part No: No:	Description:
<b>Image 1:</b>		<b>Expanded Model Nomenclature</b>	
11	0121F00123DG	DOOR, BLOWER, 17.5" PAINTED (M1, M2, M3, M4, M5, M6, M7, M8, M9, M10)	M1 - GMVC800603BNAA M2 - GMVC800603BNAB M3 - GMVC800603BXAA M4 - GMVC800603BXAB M5 - GMVC800604BNAA M6 - GMVC800604BNAB M7 - GMVC800604BXAA M8 - GMVC800604BXAB M9 - GMVC800803BNAA M10 - GMVC800803BNAB
11	0121F00124DG	DOOR, BLOWER, 21"-PAINTED (M11, M12, M13, M14, M15, M16, M17, M18, M23, M24, M25, M26)	M11 - GMVC800804CNAA M12 - GMVC800804CNAB M13 - GMVC800804CXAA M14 - GMVC800804CXAB M15 - GMVC800805CNAA M16 - GMVC800805CNAB M17 - GMVC800805CXAA M18 - GMVC800805CXAB M19 - GMVC800805DNAA M20 - GMVC800805DNAB M21 - GMVC800805DXAA M22 - GMVC800805DXAB M23 - GMVC801005CNAA M24 - GMVC801005CNAB M25 - GMVC801005CXAA M26 - GMVC801005CXAB
11	0121F00125DG	DOOR, BLOWER, 24.5"-PAINTED (M19, M20, M21, M22)	
21	B1392139	VIEW PORT BUSHING-BLOWER DOOR	
31	0121F00119DG	CONTROL ACCESS DOOR 17.5" (M1, M2, M3, M4, M5, M6, M7, M8, M9, M10)	
31	0121F00120DG	CONTROL ACCESS DOOR 21" (M11, M12, M13, M14, M15, M16, M17, M18, M23, M24, M25, M26)	
31	0121F00121DG	CONTROL ACCESS DOOR 24.5" (M19, M20, M21, M22)	
41	0130F00791	AIR PRESSURE SWITCH (M23, M24, M25, M26)	
41	0130F00792	AIR PRESSURE SWITCH (M5, M6, M7, M8, M9, M10, M15, M16, M17, M18)	
41	0130F00794	AIR PRESSURE SWITCH (M11, M12, M13, M14)	
41	0130F00795	AIR PRESSURE SWITCH (M1, M2, M3, M4, M19, M20, M21, M22)	
51	B1392147	UNIVERSAL BUSHING WITH SLICE	
71	4014502	J-BOX	
81	4015502	COVER, J-BOX	
111	10690402	INTERLOCK SWITCH	
171	0121F00142DG	TOP 17.5" (M1, M2, M3, M4, M5, M6, M7, M8, M9, M10)	
171	0121F00143DG	TOP 21" (M11, M12, M13, M14, M15, M16, M17, M18, M23, M24, M25, M26)	
171	0121F00463DG	TOP, FURNACE 24.5" (M19, M20, M21, M22)	
211	0130M00140	TRANSFORMER, (120V TO 24V, 40VA,	
221	PCBCM100	PCB, CONTROL	
251	PCBKF107	PCB, CONTROL BOARD	
261	0130M00141	INDUCTOR, 5.9 AMPS (GMPE100-4) (M5, M6, M7, M8, M11, M12, M13, M14, M15, M16, M17, M18, M19, M20, M21, M22, M23, M24, M25, M26)	
271	0121F00218	PANEL, CONTROL MOUNTING	
321	4023500	CHIMNEY TRANSITION TOP	
NS	SHARED DATA	Available thru CoolCloud HVAC app.	
NS	0159F00083	CABLE, RJ12	
NS	0161F00007	NAMEPLATE, GOODMAN	

# Blower Assembly

BLOWER ASSEMBLY STYLE 1



BLOWER ASSEMBLY STYLE 2

# Blower Assembly

Ref. Part  
No: No:

Description:

Ref. Part  
No: No:

Description:

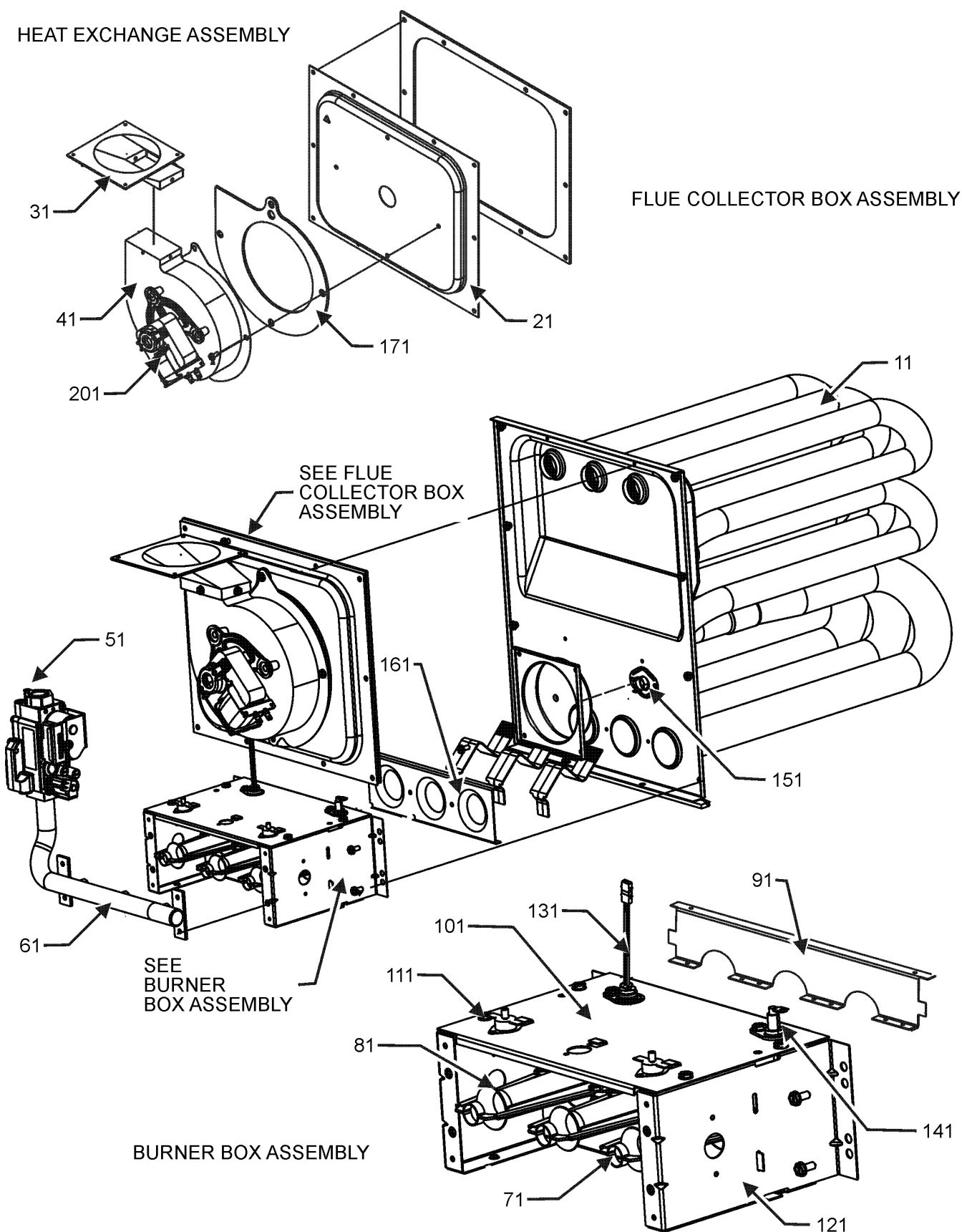
## Image 1:

111	0131M00270	MOTOR, 1/2 HP, SERIAL ECM (M1, M2, M3, M4, M9, M10, M11, M12, M13, M14)
111	0131M00271	MOTOR, 3/4 HP, SERIAL ECM (M5, M6, M7, M8, M15, M16, M17, M18, M19, M20, M21, M22, M23, M24, M25, M26)
121	0259F00024	WIRE HARNESS-BLOWER (M11, M12, M13, M14, M19, M20, M21, M22)
131	0130F00038	LIMIT, PRIMARY 120 LT BLUE
141	0121M00038	MOTOR MOUNT BAND (M1, M2, M3, M4, M5, M6, M7, M8, M9, M10)
141	0121M00039	MOTOR MOUNT BAND (HEAVY DUTY) (M11, M12, M13, M14, M15, M16, M17, M18, M19, M20, M21, M22, M23, M24, M25, M26)
151	B1376853	MOTOR MOUNT ARM (M1, M2, M3, M4, M5, M6, M7, M8, M9, M10)
151	B1376863	MOTOR MOUNT ARM (HEAVY DUTY) (M11, M12, M13, M14, M15, M16, M17, M18, M19, M20, M21, M22, M23, M24, M25, M26)
161	0259F00049	HARNESS-POWER
171	0271F00303	BLOWER SHELL & WHEEL (M11, M12, M13, M14, M19, M20, M21, M22)
181	B1392918	WASHER, FLAT 1/4 ID X 1 OD (QTY 3)
191	0163M00320	HEX HEAD ALL THREAD TAP BOLT
211	M0250565	SCREW-TC 1.25" (QTY 3)
221	B1368047	BLOWER WHEEL (10 X 10) (M15, M16, M17, M18, M23, M24, M25, M26)
221	0150M00043	WHEEL, BLOWER (10X8) (M1, M2, M3, M4, M9, M10)
221	B1368016	WHEEL, BLOWER, 10X8 (M5, M6, M7, M8)
231	B1393800	LOCKNUT, NYLON INSERT 1/4 20
241	0259M00008	WIRE HARNESS
261	0271F00111	BLOWER SHELL ASSY (M1, M2, M3, M4, M5, M6, M7, M8, M9, M10)
261	0271F00112	BLOWER SHELL ASSY (M15, M16, M17, M18, M23, M24, M25, M26)
271	764741	BLWR BLK-OFF, 10X10 (M15, M16, M17, M18, M23, M24, M25, M26)
271	764740	BLWR BLK-OFF, 10X8 (M1, M2, M3, M4, M5, M6, M7, M8, M9, M10)

## Expanded Model Nomenclature

M1 - GMVC800603BNAA  
M2 - GMVC800603BNAB  
M3 - GMVC800603BXAA  
M4 - GMVC800603BXAB  
M5 - GMVC800604BNAA  
M6 - GMVC800604BNAB  
M7 - GMVC800604BXAA  
M8 - GMVC800604BXAB  
M9 - GMVC800803BNAA  
M10 - GMVC800803BNAB  
M11 - GMVC800804CNAA  
M12 - GMVC800804CNAB  
M13 - GMVC800804CXAA  
M14 - GMVC800804CXAB  
M15 - GMVC800805CNAA  
M16 - GMVC800805CNAB  
M17 - GMVC800805CXAA  
M18 - GMVC800805CXAB  
M19 - GMVC800805DNAA  
M20 - GMVC800805DNAB  
M21 - GMVC800805DXAA  
M22 - GMVC800805DXAB  
M23 - GMVC801005CNAA  
M24 - GMVC801005CNAB  
M25 - GMVC801005CXAA  
M26 - GMVC801005CXAB

# Heat Exchange Assembly





# Heat Exchange Assembly

Ref. Part No: No:	Description :	Ref. Part No: No:	Description:		
<b>Image 1:</b>		<b>Image 1:</b>			
11	0270F00902	HEAT EXCHANGER ASSY (M9, M10)	171	0154F00005	VENT MOTOR GASKET 21" (M11, M12, M13, M14, M15, M16, M17, M18, M19, M20, M21, M22, M23, M24, M25, M26)
11	0270F00903	HEAT EXCHANGER ASSY (M23, M24, M25, M26)			
11	0270F00929	HEAT EXCHANGER ASSY (M1, M2, M3, M4, M5, M6, M7, M8)	201	DY6.186.070	VENT MOTOR CAPACITOR
11	0270F00930	HEAT EXCHANGER ASSY (M11, M12, M13, M14, M15, M16, M17, M18)	NS	0259F00062	INDUCER HARNESS ASSY
11	0270F02961	HEAT EXCHANGER ASSY (M19, M20, M21, M22)	NS	0259F00063	WIRE HARNESS ASSY (M1, M3, M5, M7, M9, M11, M13, M15, M17, M19, M21, M23, M25)
21	0121F00328	17.5" COLLECTOR BOX 1.250" DIA (M1, M2, M3, M4)	NS	0259F00260	WIRE HARNESS ASSY
21	0121F00332	17.5" COLLECTOR BOX 1.375" DIA (M5, M6, M7, M8)	NS	0259F00261	WIRE HARNESS ASSY
21	0121F00334	21" COLLECTOR BOX 1.625" DIA (M19, M20, M21, M22)	NS	0259F00262	WIRE HARNESS ASSY (M1, M3, M5, M7, M9, M11, M13, M15, M17, M19, M21, M23, M25)
21	0121F00333	21" COLLECTOR BOX 1.75" DIA (M23, M24, M25, M26)	NS	0259F00286	WIRE HARNESS ASSY (M2, M4, M6, M8, M10, M12, M14, M16, M18, M20, M22, M24, M26)
21	0121F00336	21" FLUE COLLECTOR BOX 1.50" (M15, M16, M17, M18)	NS	0259F00290	WIRE HARNESS ASSY (M2, M4, M6, M8, M10, M12, M14, M16, M18, M20, M22, M24, M26)
21	0121F00655	COLLECTOR BOX 17.5" 1.437 DIA (M9, M10)	<b>Expanded Model Nomenclature</b>		
21	0121F00659	COLLECTOR BOX 21" 1.40 DIA (M11, M12, M13, M14)			
31	0128F00006	CHIMNEY TRANSITION BOTTOM	M1	- GMVC800603BNA A	
41	0131M00781P	MOTOR, VENT 2-STAGE	M2	- GMVC800603BNAB	
51	0151M00027	GAS VALVE	M3	- GMVC800603BXAA	
61	0120F00007	MANIFOLD (M1, M2, M3, M4, M5, M6, M7, M8)	M4	- GMVC800603BXAB	
61	0120F00008	MANIFOLD (M9, M10, M11, M12, M13, M14, M15, M16, M17, M18, M19, M20, M21, M22)	M5	- GMVC800604BNA A	
61	0120F00009	MANIFOLD (M23, M24, M25, M26)	M6	- GMVC800604BNAB	
71	10716005	ORIFICE (QTY 3)	M7	- GMVC800604BXAA	
81	B4022700	INSHOT BURNER ASSY 3" (QTY 3)	M8	- GMVC800604BXAB	
91	0121F00168	BURNER RACK, 3 CELL (M1, M2, M3, M4, M5, M6, M7, M8)	M9	- GMVC800803BNA A	
91	0121F00169	BURNER RACK, 4 CELL (M9, M10, M11, M12, M13, M14, M15, M16, M17, M18, M19, M20, M21, M22)	M10	- GMVC800803BNAB	
91	0121F00170	BURNER RACK, 5 CELL (M23, M24, M25, M26)	M11	- GMVC800804CNA A	
101	0121F00163	TOP, BURNER BOX 3 CELL (M1, M2, M3, M4, M5, M6, M7, M8)	M12	- GMVC800804CNAB	
101	0121F00164	TOP, BURNER BOX 4 CELL (M9, M10, M11, M12, M13, M14, M15, M16, M17, M18, M19, M20, M21, M22)	M13	- GMVC800804CXAA	
101	0121F00165	TOP, BURNER BOX 5 CELL (M23, M24, M25, M26)	M14	- GMVC800804CXAB	
111	10123529	MANUAL RESET R.O.S. LIMIT (QTY 2)	M15	- GMVC800805CNA A	
121	0121F00146	BURNER BOX SIDE (QTY 2)	M16	- GMVC800805CNAB	
131	0130F00008	SINI IGNITOR	M17	- GMVC800805CXAA	
141	0130F00010	FLAME SENSOR	M18	- GMVC800805CXAB	
151	20162904	*PRIMARY LIMIT-TEMPERATURE CONTROL (M9, M10, M11, M12, M13, M14, M19, M20, M21, M22) *Refer to service bulletin SF-054	M19	- GMVC800805DNA A	
151	0130M00063	LIMIT, PRIMARY, 140, GOLD (M5, M6, M7, M8, M15, M16, M17, M18)	M20	- GMVC800805DNAB	
151	20162903	LIMIT-BLUE (M1, M2, M3, M4)	M21	- GMVC800805DXAA	
151	20162905	LIMIT-YELLOW (M23, M24, M25, M26)	M22	- GMVC800805DXAB	
161	4028001	ORIFICE PLATE, 3CELL (M1, M2, M3, M4, M5, M6, M7, M8)	M23	- GMVC801005CNA A	
161	4028002	ORIFICE PLATE, 4CELL (M9, M10, M11, M12, M13, M14, M15, M16, M17, M18, M19, M20, M21, M22)	M24	- GMVC801005CNAB	
161	4028003	ORIFICE PLATE, 5CELL (M23, M24, M25, M26)	M25	- GMVC801005CXAA	
171	0154F00004	VENT MOTOR GASKET 17.5" (M1, M2, M3, M4, M5, M6, M7, M8, M9, M10)	M26	- GMVC801005CXAB	