



FlashShield Outlet Box, FSOUTLETBOX

Description (Sample Specification Language)

FlashShield™ is a corrugated stainless steel tubing complying with ANSI LC 1b "Fuel Gas Piping Systems Using CSST" and listed with CSA®, ICC and IAPMO. Manufacturing materials are: ASTM A240 type 300 corrugated stainless steel tubing with a minimum wall thickness of .010", jacketing of UV resistant polymer. All mechanical tube fittings are SAE CA360 brass incorporating double wall flare sealing and Jacket Lock™ jacket capturing for steel tubing protection and continuous conductivity.

Features:

- ∞ Quick & Easy Installation
- ∞ Required Tools: Tubing Cutter, Utility Knife, Wrenches
- ∞ Fewer Fittings, Less Waste
- ∞ Technical Support
- ∞ Approved for Concealed Use
- ∞ Tool-Less Flare Fitting Design
- ∞ Metal-to-Metal Seal
- ∞ Self-Guiding Fitting Assembly
- ∞ Patented Jacket-Lock™
- ∞ Fully Reusable Fitting
- ∞ For Flush Mount "Fixed-Point" Termination of Appliances
- ∞ Kit Contains: FlashShield-Fitting, Valve Box, Valve, Finish Plate, Bracket, Nut and Plug



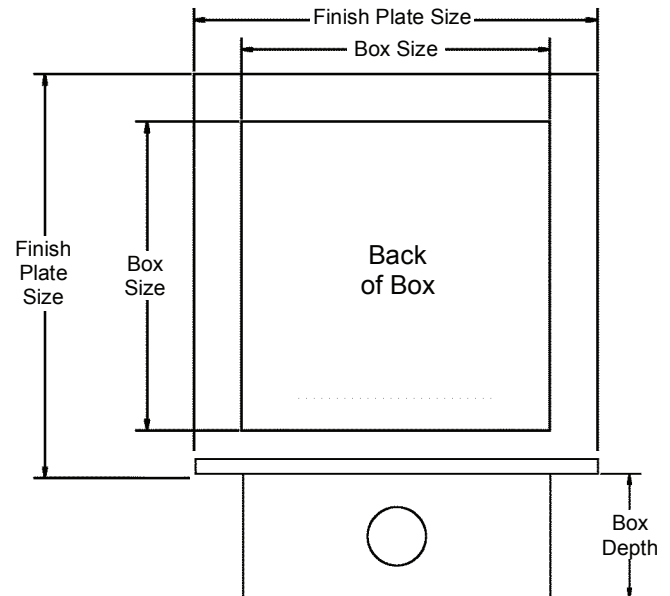
Applicable Standards & Listings:

- ∞ CSA: ANSI LC 1 "Fuel Gas Piping Systems Using Corrugated Stainless Steel Tubing" – Certificate No. 1009875
- ∞ ICC: International Code Council – Evaluation Report No. PMG 1066
- ∞ IAPMO: International Association of Plumbing & Mechanical Officials - File No. C-3250

Technical Data:

General

| | |
|----------------------------------|----------------|
| Max. Approved Operating Pressure | 5 psi |
| Recommended Test Pressure | 50 psi |
| Operating Temperature Range | -35°F to 160°F |
| Fitting Material | CA360 |



Dimensional Characteristics

| Size | P/N | Pipe Thread | Nut Hex | Fitting Hex | Finish Plate Size | Box Size | Box Depth | Assembly Torque (ft-lbs) | Weight (lbs) |
|------|----------------|-------------|---------|-------------|-------------------|----------|-----------|--------------------------|--------------|
| 1/2" | FSOUTLETBOX-8 | 1/2" | 1-1/4" | 1-1/8" | 6-13/16" | 5-3/16" | 2-1/8" | 35 | 1.54 |
| 3/4" | FSOUTLETBOX-12 | 3/4" | 1-9/16" | 1-3/8" | 8-1/2" | 6-1/2" | 3" | 45 | 2.19 |



FlashShield CSST Fittings and Installation Guide

| Part No. | Description | Pkg. Qty | Lbs./Box |
|----------------------|---|--------------|------------|
| FSFTG-8-24 | 1/2" FlashShield Straight Fitting – 1/2" NPT | 24/Box | 7.2 |
| FSFTG-11-24 | 3/4" FlashShield Straight Fitting – 3/4" NPT | 24/Box | 10.4 |
| FSFTG-16-12 | 1" FlashShield Straight Fitting – 1" NPT | 12/Box | 7.9 |
| FSFTGFM-8-24 | 1/2" FlashShield Straight Fitting – 1/2" Female NPT | 24/Box | 7.6 |
| FSFTGFM-11-8-24 | 3/4" FlashShield Straight Fitting – 1/2" Female NPT | 24/Box | 11.2 |
| FSFTGFM-11-24 | 3/4" FlashShield Straight Fitting – 3/4" Female NPT | 24/Box | 11.2 |
| FSREDFTG-11-08-24 | 3/4" FlashShield Straight Reducing Fitting – 1/2" NPT | 24/Box | 9.6 |
| FSREDFTG-16-12-12 | 1" FlashShield Straight Reducing Fitting – 3/4" NPT | 12/Box | 7.7 |
| FSCPL-8-12 | 1/2" FlashShield Coupling | 12/Box | 5.8 |
| FSCPL-11-12 | 3/4" FlashShield Coupling | 12/Box | 8.8 |
| FSCPL-16-6 | 1" FlashShield Coupling | 6/Box | 6.7 |
| FSTRM-8-12 | 1/2" FlashShield Term. Fitting – 1/2" NPT | 12/Box | 10.0 |
| FSTRM-11-12 | 3/4" FlashShield Term. Fitting – 3/4" NPT | 12/Box | 13.7 |
| FSTRM-16-6 | 1" FlashShield Term. Fitting – 1" NPT | 6/Box | 10.8 |
| FSTRM-8-12CB | 1/2" FlashShield Term. Fitting w/ Bronze Flange – 1/2" NPT | 12/Box | 10.0 |
| FSTRM-11-12CB | 3/4" FlashShield Term. Fitting w/ Bronze Flange – 3/4" NPT | 12/Box | 13.7 |
| FSTRM-16-6CB | 1" FlashShield Term. Fitting w/ Bronze Flange – 1" NPT | 6/Box | 10.8 |
| FSTRM-8-NF-12 | 1/2" FlashShield Term. Fitting – 1/2" NPT (no flange) | 12/Box | 4.2 |
| FSTRM-11-NF-12 | 3/4" FlashShield Term. Fitting – 3/4" NPT (no flange) | 12/Box | 6.1 |
| FSTRM-16-NF-6 | 1" FlashShield Term. Fitting – 1" NPT (no flange) | 6/Box | 4.7 |
| FSTRMBKT-8-12 | 1/2" FlashShield Term. Bracket Fitting – 1/2" NPT | 12/Box | 6.4 |
| FSTRMBKT-11-12 | 3/4" FlashShield Term. Bracket Fitting – 3/4" NPT | 12/Box | 8.4 |
| FSTRMBKT-16-6 | 1" FlashShield Term. Bracket Fitting – 1" NPT | 6/Box | 6.9 |
| KIT P/N's | Description | Pkg. Qty | Lbs./Box |
| FS-APSTUB-8-10 | 1/2" FlashShield x 1-1/2" Stub x 1/2" NPT | 10/Box | 15.2 |
| FS-L-APSTUB-8-10 | 1/2" FlashShield x 2-1/4" Stub x 1/2" NPT | 10/Box | 13.3 |
| FS-APSTUB-11-10 | 3/4" FlashShield x 1-1/2" Stub x 1/2" NPT | 10/Box | 18.5 |
| FS-L-APSTUB-11-10 | 3/4" FlashShield x 2-1/4" Stub x 1/2" NPT | 10/Box | 19.9 |
| FS-APSTUB-11-11-10 | 3/4" FlashShield x 1-1/2" Stub x 3/4" NPT | 10/Box | 19.8 |
| FS-L-APSTUB-11-11-10 | 3/4" FlashShield x 2-1/4" Stub x 3/4" NPT | 10/Box | 21.6 |
| FSOUTLETBOX-8 | Recessed Gas Outlet Box w/1/2" FlashShield Fitting | 1 kit | 1.6 |
| FSOUTLETBOX-11 | Recessed Gas Outlet Box w/3/4" FlashShield Fitting | 1 kit | 2.2 |
| FSOUTLETBOX-FR8 | Recessed FireStop Gas Outlet Box w/1/2" FlashShield Fitting | 1 kit | 3.8 |
| FSOUTLETBOX-FR11 | Recessed FireStop Gas Outlet Box w/3/4" FlashShield Fitting | 1 kit | 4.2 |

To order, call your Gastite representative or distributor.
To learn more, go to gastite.com/flashshield. Or email us at flashshield@gastite.com.