



FlashShield Metallicly Shielded Corrugated Stainless Steel Tubing

Gastite Division
1116 Vaughn Parkway
Portland, TN 37148
Telephone 800-662-0208
www.gastite.com

Description

FlashShield™ is metallicly shielded corrugated stainless steel tubing system complying with ANSI LC 1 "Fuel Gas Piping Systems Using CSST" and listed with CSA®, ICC and IAPMO. The FlashShield system is also listed to protective jacket standards, ICC-ES PMG LC1024, and LC1027. Manufacturing materials are: ASTM A240 type 304 corrugated stainless steel tubing with a minimum wall thickness of .010", semi-conductive jacketing of UV resistant polymer. All mechanical tube fittings are SAE CA360 brass incorporating double wall flare sealing and Jacket-Bite™ capturing for steel tubing protection and continuous conductivity.

FlashShield CSST Features:

- Metallic shield layer provides protection from electrical damage
- Two layers semi-conductive polymer jacket
- Pre-Marked by the Foot
- Lightweight & Flexible
- 100% Factory Pressure Tested

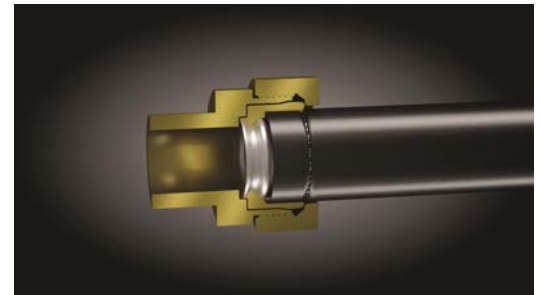


Listings:

- CSA Certificate 1009875
- ICC-ES Report No. PMG 1066 and PMG 1155
- IAPMO: File No. C-3250 and Report No. 0239

Technical Data:

Max. Approved Operating Pressure	5 psi
Recommended Test Pressure	50 psi
Tubing Minimum Burst Pressure	1,500 psi
Operating Temperature Range	-35°F to 160°F
Tubing Melting Point	2400°F
Jacket Melting Point	205°F
Tubing Material	ASTM A240 Type 304 SS
Jacket Material	UV Resistant Semi Conductive Polymer
Metallic Shield Material	AL1145 or AL3003



Dimensional Characteristics

Size	P/N	EHD	Nominal OD (w/o jacket)	Nominal OD (w/ jacket)	Wall Thickness	Weight (lbs/ft)	Max Test Pressure (psi)
1/2"	FS-8	18	0.710"	0.818"	0.010"	0.166	250
3/4"	FS-11	23	0.930"	1.023"	0.010"	0.209	250
1"	FS-16	31	1.250"	1.368"	0.010"	0.307	250
1-1/4"	FS-20	37	1.500"	1.608"	0.011	0.386	150