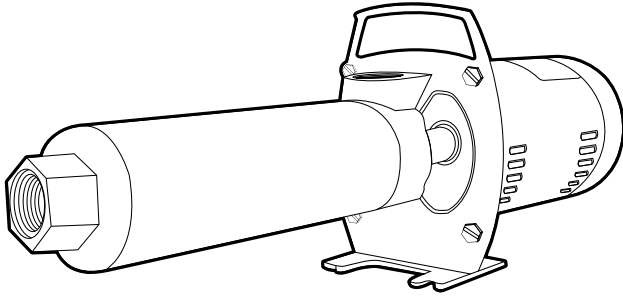




**Franklin Electric**

# **BT4 SERIES HORIZONTAL BOOSTER OWNER'S MANUAL**



## **BEFORE YOU START**

**MOST WATER SYSTEM PROBLEMS RESULT FROM IMPROPER INSTALLATION.**

**BEFORE INSTALLING PUMP, BE SURE TO READ THIS OWNER'S MANUAL CAREFULLY, AND FOLLOW ALL SAFETY INSTRUCTIONS IN THIS MANUAL AND ON THE PUMP.**

**REFER TO PRODUCT DATA PLATE(S) FOR ADDITIONAL OPERATING INSTRUCTIONS AND SPECIFICATIONS.**

### **⚠ CAUTION**

Keep work area clean, well-lit and uncluttered.

Keep safety labels clean and in good condition.

Wear safety glasses while installing or performing maintenance on pump.

Replace missing or damaged safety labels.

Adhere to the guidelines of the National Electric Code (NEC) or Canadian Electric Code (CEC), and any other state and local codes for ALL electrical installations. Check with the appropriate agencies or contact a licensed electrician.

The "TROUBLESHOOTING SECTION" will assist you in locating and eliminating the cause of any trouble you may encounter after installation. Check and have all tools needed to install your pump. Required tooling may include wrenches, pipe sealant, pipe fittings and nipples, screwdriver, etc. Be sure to have recommended wiring material to complete the installation correctly.

## **READ AND FOLLOW SAFETY INSTRUCTIONS**

This is the safety alert symbol. When you see this ⚠ symbol on your pump or in this manual, look for one of the following signal words and be alert to the potential for personal injury:

**⚠ DANGER** warns about hazards that **will** cause serious personal injury, death or major property damage if ignored.

**⚠ WARNING** warns about hazards that **can** cause serious personal injury, death or major property damage if ignored.

**⚠ CAUTION** warns about hazards that **will** or **can** cause minor personal injury or major property damage if ignored.

**NOTICE** indicates special instructions which are important but not related to hazards.



**⚠ WARNING HAZARDOUS PRESSURE:** Do not run pump against closed discharge. Release all system pressure before working on any component.

**⚠ CAUTION** Do not run pump dry. Fill pump with water before starting or pump will be damaged.

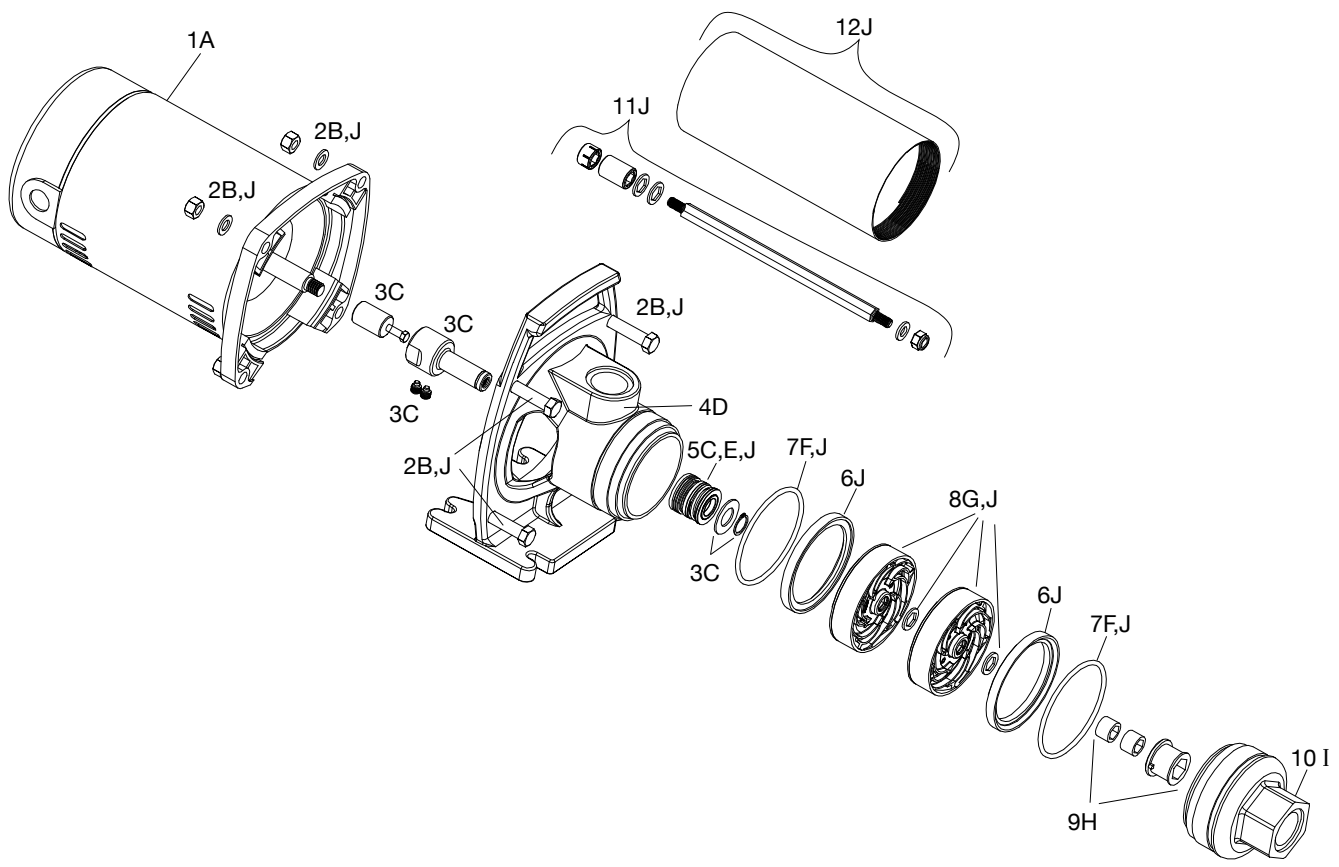
If you purchased a complete pump/motor assembly, the motor is guaranteed by the manufacturer. In the event of a product failure, it must be returned to an authorized service station for repairs. Motor warranty is void if repairs are not made by an authorized repair station.

## **ELECTRICAL SAFETY**

**⚠ CAUTION** Make sure all ELECTRICAL POWER IS OFF before connecting any electrical wires.

**⚠ WARNING** Capacitor voltage may be hazardous. To discharge motor capacitor, hold insulated handle screwdriver **BY THE HANDLE** and short capacitor terminals together. Do not touch metal screwdriver blade or capacitor terminals or electrical shock could occur. If in doubt, consult a qualified electrician.

PARTS FOR BT4 MODELS



**PARTS FOR BT4 MODELS - CONTINUED**

Figure No.	Description	Construction Material	Kit (1) Grouping Identifier	Repair Part Order Codes by Motor Size						
				1/3HP (1.95SF)	1/2HP (1.90SF)	3/4HP (1.65SF)	1.0HP (1.65SF)	1.5HP (1.47SF)	2.0HP (1.25SF)	3.0HP (1.15SF)
1	Single-phase Motor		A	305374908	305374903	305374906	305374907	305374909	305374911	305374912
	Three-phase Motor				305374954	305374955	305374956	305374957	305374958	305374959
2	Fastener Kit		B	305421901						
3	Coupling Kit (2)	Stainless Steel	C	305421902						
		Cast Iron		305421903						
4	Pump/Motor Bracket	Stainless Steel	D	305421904						
		Cast Iron		305421905						
5	Mechanical Seal	Stainless Steel	E	305421906						
		Cast Iron		305421907						
6	Suction/Discharge Spacers	Not available as separate components. Included in the hydraulic overhaul kit only.								
7	O-Ring Set		F	305421908						
8	Stage Assembly									
	5 GPM		G	305404911						
	7 GPM			305404912						
	10 GPM			305404913						
	15 GPM			305404914						
	20 GPM			305404915						
25 GPM		305404916								
9	Top Bearing		H	305421909						
10	Discharge Head		I	305421910						
11	Pump Shaft (and Shaft Hardware)	Not available as separate components. Included in the hydraulic overhaul kit only.								
12	Pump Shell	Not available as separate components. Included in the hydraulic overhaul kit only.								
13	Hydraulic Overhaul Kit (3)									
	5 GPM	Stainless Steel	J	305422901	305422902	305422903	305422904			
	7 GPM				305422905	305422906	305422907	305422908		
	10 GPM				305422909	305422910	305422911	305422912	305422913	
	15 GPM					305422914	305422915	305422916	305422917	
	20 GPM					305422918	305422919	305422920	305422921	305422922
25 GPM						305422923	305422924	305422925	305422926	
13	Hydraulic Overhaul Kit (3)									
	5 GPM	Cast Iron	J	305423901	305423902	305423903				
	7 GPM				305423904	305423905	305423906	305423907		
	10 GPM				305423908	305423909	305423910	305423911	305423912	
	15 GPM					305423913	305423914	305423915	305423916	
	20 GPM					305423917	305423918	305423919	305423920	
25 GPM						305423922	305423923	305423924		305423925

(1) Items with like identifiers are sold/packaged together.

(2) Coupling kit ships with mechanical seal.

(3) Hydraulic overhaul kit is the combination of figure numbers 2, 5, 6, 7, 8, 11, and 12.