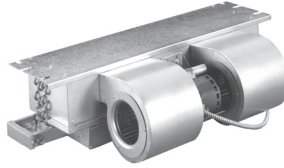


# First Co.

## HX , HX-C, HX-E SERIES PARTS LIST

**HX (-C),(-E), HXB Series**  
Horizontal Fan Coils  
DX Cooling With or Without Electric Heat



UNIT MODEL	KW	HEATER ELEMENT	HEATER MODULE	MOTOR (240V)	FAN RELAY	TRANS-FORMER	SEQ.	LIMIT STAT	FUSE LINK	BLOWER ASSM.	BLOWER HSG.	BLOWER WHEEL	* COIL ASSM.	DRAIN PAN	ORIFICE
12HX (C), (E)	-0	---	310-3-1	M12	E1305 E130	E137	---	---	---	330-15	210-1 (2)	W31S (2)	320-454 (OBS.)	350-78-1C	CP81-42
	-3	315-4-1	310-1-1												
	-5	315-4-2	310-1-2												
	-6	315-4-3	310-1-3												
15HX (C), (E)	-0	---	310-3-1	M8	E1305 E130	E137	---	---	---	330-9	210-1 (2)	W31S (2)	320-455 (OBS.)	350-78-1C	CP81-46
	-3	315-4-1	310-1-1												
	-5	315-4-2	310-1-2												
	-6	315-4-3	310-1-3												
18HX (C), (E)	-0	---	310-3-1	M8	E1305 E130	E137	---	---	---	330-9	210-1 (2)	W31S (2)	321-19-1	350-78-1C	CP81-51
	-3	315-4-1	310-1-1												
	-5	315-4-2	310-1-2												
	-6	315-4-3	310-1-3												
	-8	315-4-4	310-1-4												
	-10	315-4-5	310-1-5												
19HX (C), (E)	-0	---	310-3-1	M8	E1305 E130	E137	---	---	---	330-9	210-1 (2)	W31S (2)	321-20-1	350-78-1C	CP81-51
	-3	315-4-1	310-1-1												
	-5	315-4-2	310-1-2												
	-6	315-4-3	310-1-3												
	-8	315-4-4	310-1-4												
	-10	315-4-5	310-1-5												
24HX (C), (E)	-0	---	310-3-1	M10	E1305 E130	E137	---	---	---	330-10	210-1 (2)	W31S (2)	321-21-1	350-78-1C	CP81-59
	-5	315-4-2	310-1-2												
	-6	315-4-3	310-1-3												
	-8	315-4-4	310-1-4												
	-10	315-4-5	310-1-5												
	-12	315-4-6	310-1-6												
25HX (C), (E)	-0	---	310-3-2	M10	E1305 E130	E137	---	---	---	330-51	210-1 (2)	W29 (2)	321-22-1	350-78-2C	CP81-59
	-3	315-4-1	310-1-19												
	-5	315-4-2	310-1-7												
	-6	315-4-3	310-1-8												
	-8	315-4-4	310-1-9												
	-10	315-4-5	310-1-10												
30HX (C), (E)	-0	---	310-3-2	M10	E1305 E130	E137	---	---	---	330-12	210-2 (2)	W32 & W32-1	321-23-1	350-78-2C	CP81-63
	-3	315-4-1	310-1-19												
	-5	315-4-2	310-1-7												
	-6	315-4-3	310-1-8												
	-8	315-4-4	310-1-9												
	-10	315-4-5	310-1-10												
31HX (C),(E)	-0	---	310-3-4	M10	E1305 E130	E137	---	---	---	330-118	210-2 (2)	W32 & W32-1	321-24-1	350-78-4C	CP81-63
	-3	315-4-1	310-1-41												
	-5	315-4-2	310-1-15												
	-6	315-4-3	310-1-16												
	-8	315-4-4	310-1-17												
	-10	315-4-5	310-1-18												
24HXB (C),(E)	-0	---	310-3-1	M10	E1305 E130	E137	---	---	---	330-11	210-1 (2)	W29 (2)	321-21-1	350-78-1C	CP81-59
	-5	315-4-2	310-1-2												
	-6	315-4-3	310-1-3												
	-8	315-4-4	310-1-4												
	-10	315-4-5	310-1-5												
	-12	315-4-6	310-1-6												
30HXB (C), (E)	-0	---	310-3-2	M21	E1305 E130	E137	---	---	---	330-13	210-2 (2)	W27 & W27-1	321-23-1	350-78-2C	CP81-63
	-5	315-4-2	310-1-7												
	-6	315-4-3	310-1-8												
	-8	315-4-4	310-1-9												
	-10	315-4-5	310-1-10												
	-12	315-4-6	310-1-11												
36HX (C), (E)	-0	---	310-3-4	M35	E1305 E130	E137	---	---	---	330-52	210-2 (2)	W27 & W27-1	321-25-1	350-78-4C	CP81-70
	-5	315-4-2	310-1-15												
	-6	315-4-3	310-1-16												
	-8	315-4-4	310-1-17												
	-10	315-4-5	310-1-18												
	-12	315-4-6	310-1-25												
37HX (C), (E)	-0	---	310-3-9	M35	E1305 E130	E137	---	---	---	330-158	210-2 (2)	W27 & W27-1	321-26-1	350-78-8C	CP81-70
	-5	315-4-2	310-1-60												
	-6	315-4-3	310-1-61												
	-8	315-4-4	310-1-62												
	-10	315-4-5	310-1-63												
	-12	315-4-6	310-1-64												

Note: Number in ( ) represents the quantity required per unit

Note: \* Default coil is piston style. For R22 or R410 TXV coil contact factory