



60 _ T _ _ 0
 60 _ T _ _ 0-SS

Write purchase model number here for future reference

208679

208679

208679

208679

208679

208679

208679

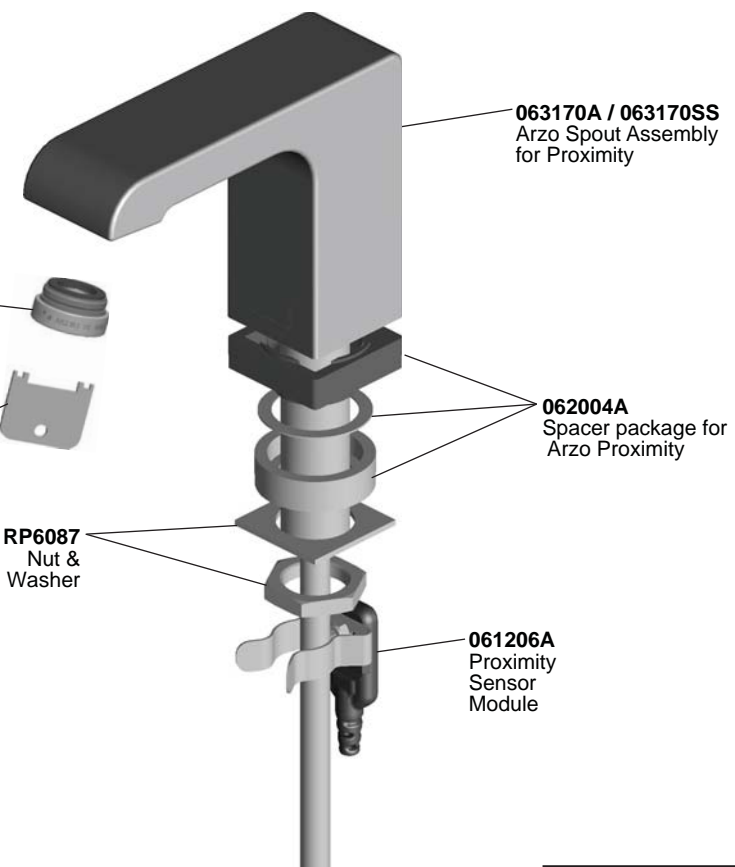
208679

060638A / 060638SS
 (1.5 GPM / 5.7 L/min)
 Vandal Resistant Laminar Outlet
 with Antimicrobial by Agion®

061203A / 061203SS
 (0.5 GPM / 1.9 L/min)
 Vandal Resistant Laminar Outlet

061104A / 061104SS
 (0.35 GPM / 1.32 L/min)
 Vandal Resistant Spray Outlet

060765A
 Wrench



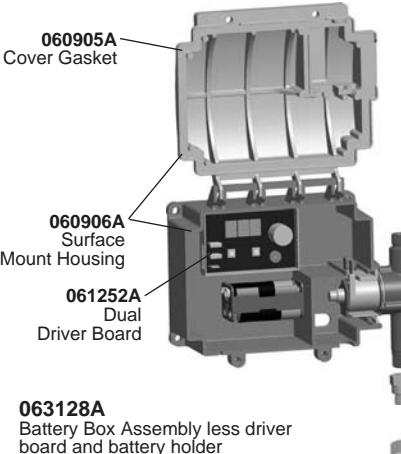
063170A / 063170SS
 Arzo Spout Assembly
 for Proximity

062004A
 Spacer package for
 Arzo Proximity

RP6087
 Nut &
 Washer

061206A
 Proximity
 Sensor
 Module

NOTE: For optimum performance of this product, we recommend a system pressure between 20 and 80 PSI static. This product will operate up to a maximum of 125 PSI static per ANSI and CSA requirements. However, we do not recommend pressure above 80 PSI. Thermal expansion or leaking pressure reducing valves may require use of expansion tanks or relief valves to ensure your system never exceeds its maximum intended pressure setting.



060905A
 Cover Gasket

060906A
 Surface
 Mount Housing

061252A
 Dual
 Driver Board

063128A
 Battery Box Assembly less driver
 board and battery holder

063127A
 Solenoid Valve with 3/8" Compression
 Connectors and Solenoid Holder

060908A
 Solenoid Holder

060909A
 Screen Assembly

063131A
 3/8" Comp Connect Nut and Ferrile

062032A
 Polymer Hose

060683A
 24VAC to 6VDC Converter

061259A
 Ground Wire Kit (for hardwire models)

061047A
 24VAC to 6VDC Converter with
 Battery Backup

OPTION LIST	
	062021A / 062021SS 4" Escutcheon & Gasket (Arzo)
	061119A 8" Coverplate
	061255A Battery Holder - Square (4 "AA")
TRANSFORMERS	
	060704A Transformer 110 to 24 VAC 20VA up to 5 Electronic Valves
	060771A Transformer 110 to 24 VAC 40VA up to 10 Electronic Valves
	060772A Transformer 110 to 24 VAC 100VA up to 25 Electronic Valves

PLEASE LEAVE this M&I Sheet with the owner, maintenance plumber, etc. as items relating to ongoing maintenance suggestions and procedures are included.