



a Geberit company

2100 South Clearwater Drive  
Des Plaines, IL 60018  
Phone: 847-803-5000  
Fax: 847-803-5454  
www.chicagofaucets.com

# REPAIR PARTS

BY: SID DATE: 09-18-14

CHK: *[Signature]* REV:

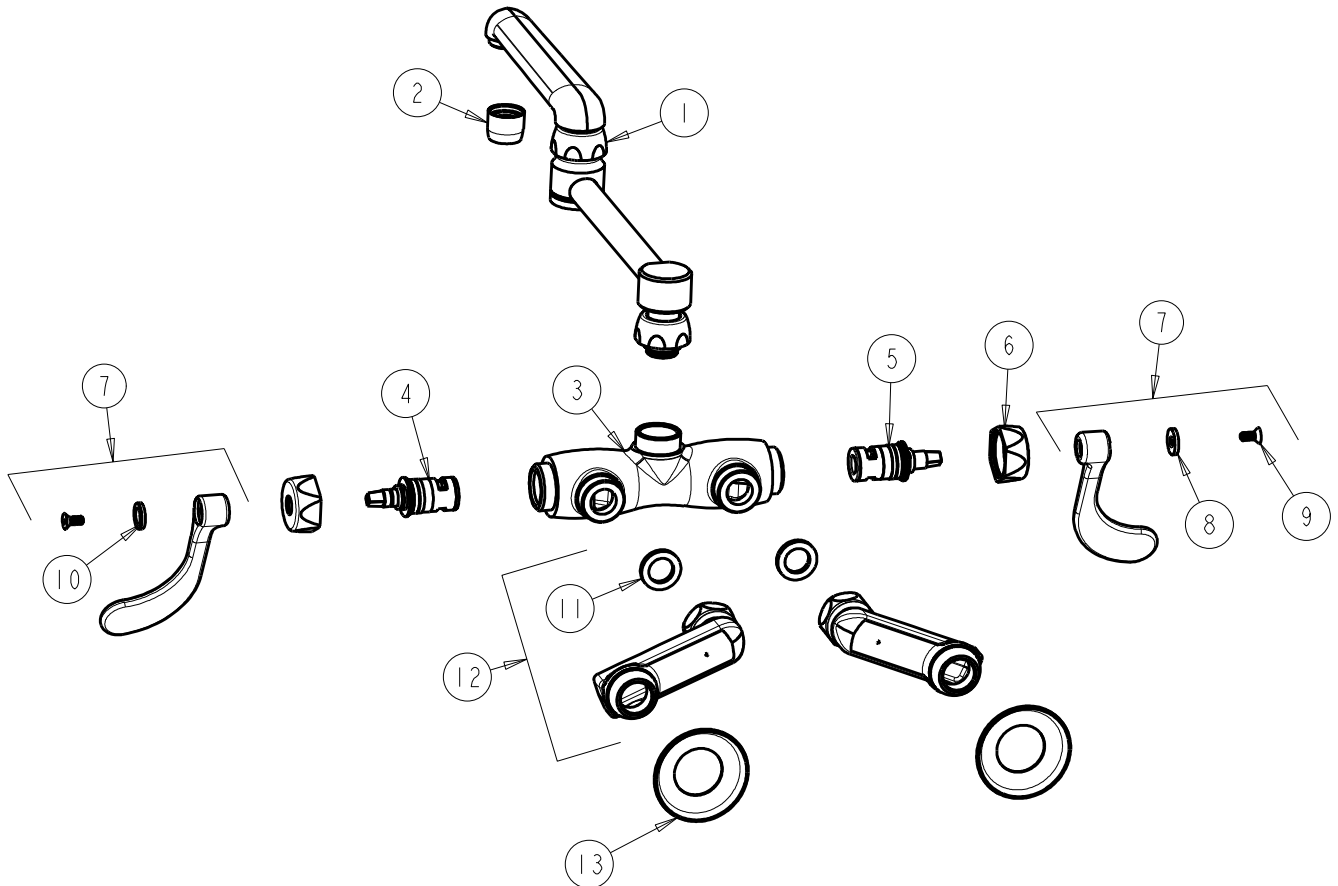
FITTING NO.

445-DJ13-317XKABCP

SUBMITTED MODEL NO.

ITEM NO.

**FOR TECHNICAL ASSISTANCE**  
1-800-TEC-TRUE (1-800-832-8783)



ITEM	PART NO.	DESCRIPTION
1	DJ13LEOJKAB	DOUBLE JOINTED SWING SPOUT
2	E3JKABCP	SOFTFLO AERATOR 2.2 GPM
3	-----	VALVE BODY (NOT SOLD SEPARATELY)
4	1-099XKJKABNF	RH CERAMIC CARTRIDGE 1/4
5	1-100XKJKABNF	LH CERAMIC CARTRIDGE 1/4
6	444-005JKCP	CAP
7	317-PRJKCP	HANDLE, 4" WRISTBLADE (PAIR)
8	633-023JKNF	INDEX BUTTON (RED)
9	420-020JKNF	SCREW, 1/8 FLAT HEX HEAD X 1/2
10	633-123JKNF	INDEX BUTTON (BLUE)
11	1-011JKABNF	WASHER, .97 X .62 X .12
12	HJKABCP	ARM ASSEMBLY w/WASHER
13	1-055JKCP	FLANGE