



a Geberit company

2100 South Clearwater Drive  
Des Plaines, IL 60018  
Phone: 847-803-5000  
Fax: 847-803-5454  
www.chicagofaucets.com

# REPAIR PARTS

BY: SID DATE: 10-27-08

CHK: *[Signature]* REV: 09-26-14

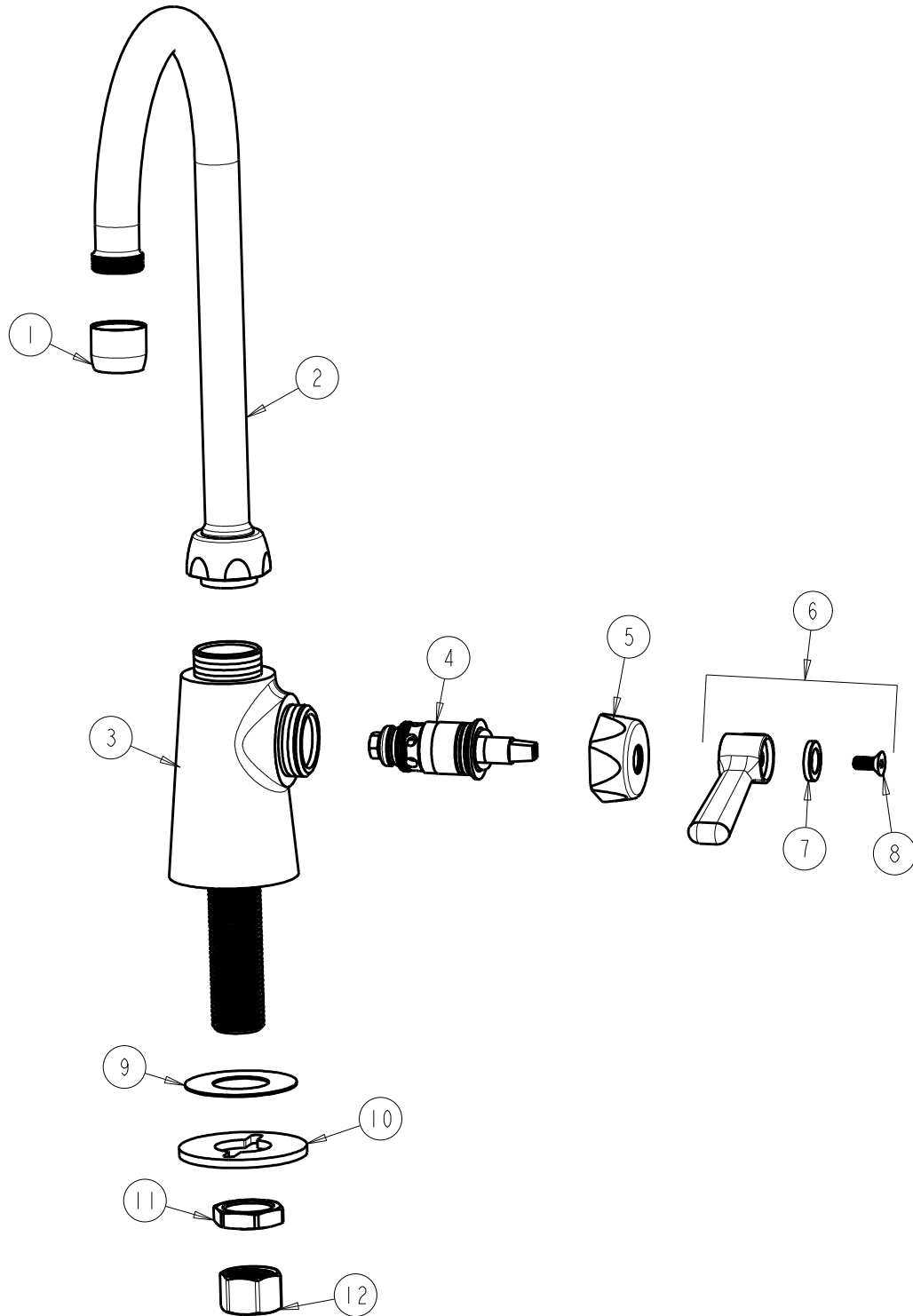
FITTING NO.

**350-ABCP**

SUBMITTED MODEL NO.

ITEM NO.

**FOR TECHNICAL ASSISTANCE**  
1-800-TEC-TRUE (1-800-832-8783)



ITEM	PART NO.	DESCRIPTION	ITEM	PART NO.	DESCRIPTION
1	E3JKABCP	SOFTFLO AERATOR 2.2 GPM	7	633-123JKNF	INDEX BUTTON (BLUE)
2	GN2AJKABCP	SPOUT, GN SPOUT 5-1/4" C-C	8	420-020JKNF	SCREW, 1/8 FLAT HEX HEAD X 1/2
3	-----	VALVE BODY (NOT SOLD SEPARATELY)	9	333-103JKNF	RUBBER WASHER
4	1-099XTJKABNF	QUATURN CARTRIDGE (RH)	10	807-112JKNF	WASHER
5	444-005JKCP	CAP	11	49-004JKRBF	LOCKNUT
6	369-COLDJKCP	LEVER HANDLE ASSEMBLY	12	49-005JKRBF	COUPLING NUT