



a Geberit company

2100 South Clearwater Drive  
Des Plaines, IL 60018  
Phone: 847-803-5000  
Fax: 847-803-5454  
www.chicagofaucets.com

# REPAIR PARTS

BY: JAR DATE: 11-13-12

CHK: *JR* REV:

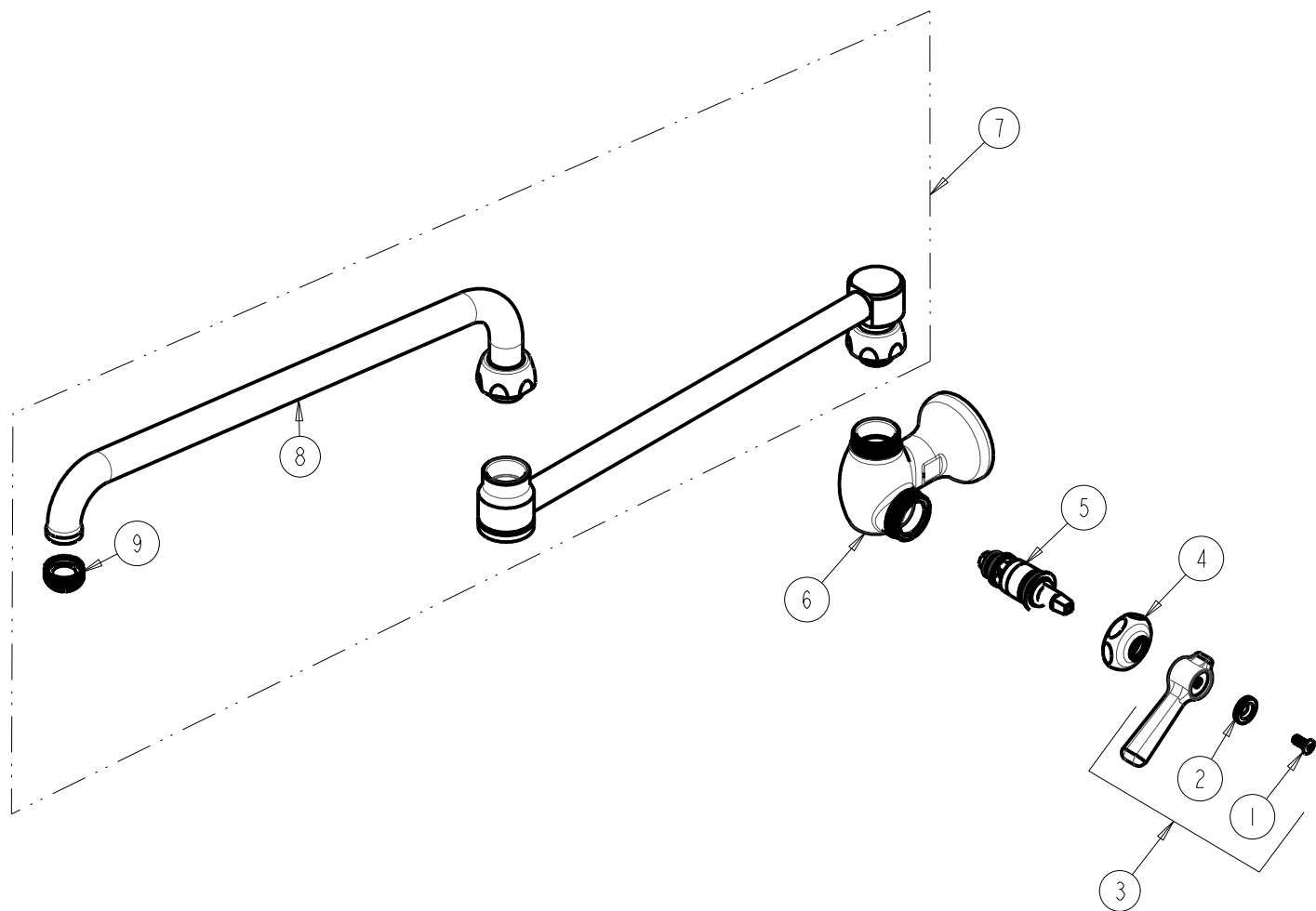
FITTING NO.

332-DJ26ABCP

SUBMITTED MODEL NO.

ITEM NO.

**FOR TECHNICAL ASSISTANCE**  
1-800-TEC-TRUE (1-800-832-8783)



| ITEM | PART NO.      | DESCRIPTION                      |
|------|---------------|----------------------------------|
| 1    | 420-010JKRCF  | SCREW, 10-32 UNC PH 1/2          |
| 2    | 633-123JKNF   | INDEX BUTTON (BLUE)              |
| 3    | 369-COLDJKCP  | LEVER HANDLE ASSEMBLY            |
| 4    | 1-214JKCP     | CAP                              |
| 5    | 1-099XTJKABNF | QUATURN CARTRIDGE (RH)           |
| 6    | -----         | VALVE BODY (NOT SOLD SEPARATELY) |
| 7    | DJ26JKABCP    | SPOUT                            |
| 8    | L15LESSE3JKCP | SPOUT                            |
| 9    | E1JKABRCF     | QUIXTOP OUTLET                   |