



a Geberit company

2100 South Clearwater Drive
Des Plaines, IL 60018
Phone: 847-803-5000
Fax: 847-803-5454
www.chicagofaucets.com

REPAIR PARTS

BY: JAR DATE: 10-31-13

CHK: *[Signature]* REV: 10-28-14

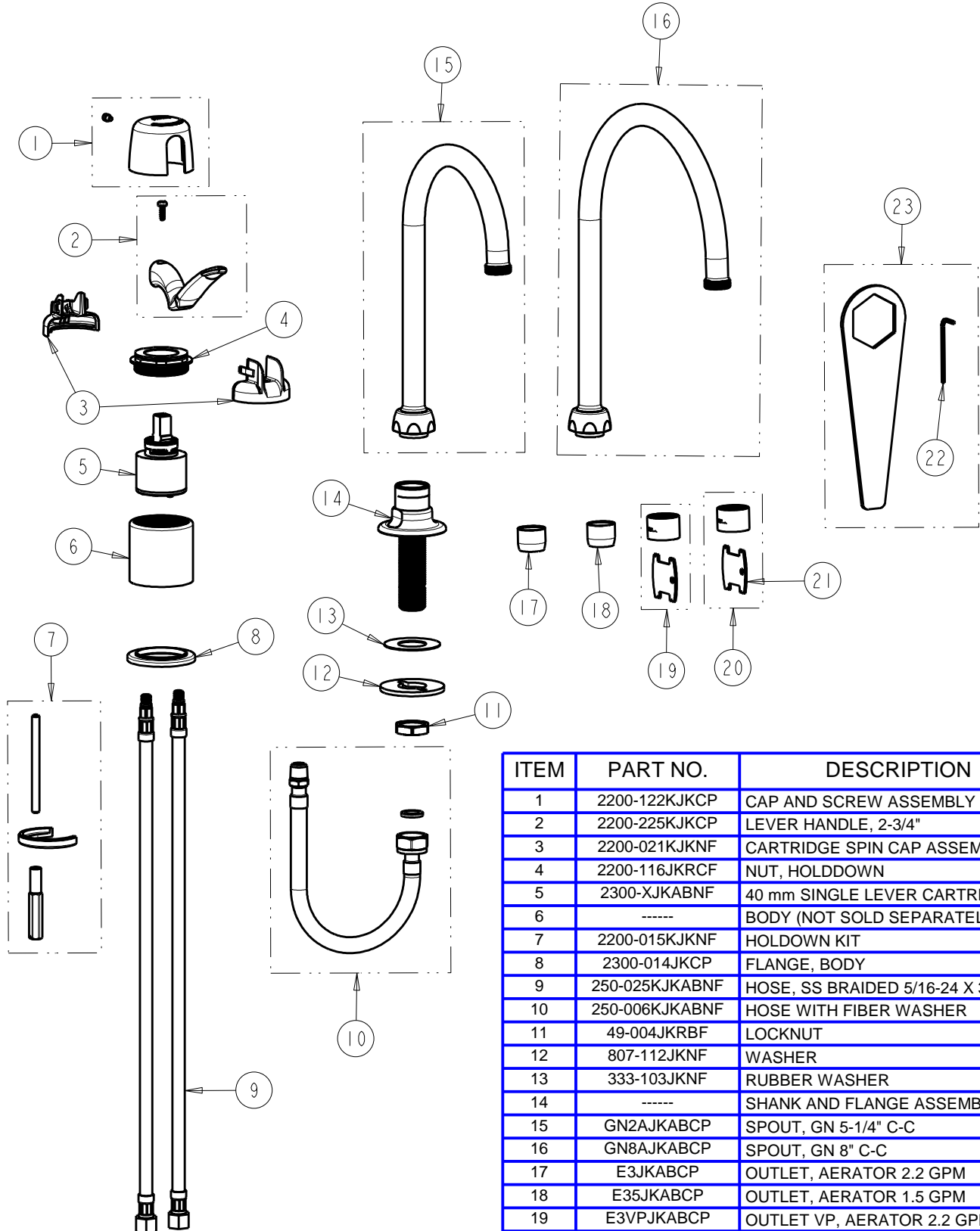
FITTING NO.

2302-2303-SERIES

SUBMITTED MODEL NO.

ITEM NO.

FOR TECHNICAL ASSISTANCE
1-800-TEC-TRUE (1-800-832-8783)



ITEM	PART NO.	DESCRIPTION
1	2200-122KJKCP	CAP AND SCREW ASSEMBLY
2	2200-225KJKCP	LEVER HANDLE, 2-3/4"
3	2200-021KJKNF	CARTRIDGE SPIN CAP ASSEMBLY
4	2200-116JKRCF	NUT, HOLDDOWN
5	2300-XJKABNF	40 mm SINGLE LEVER CARTRIDGE
6	-----	BODY (NOT SOLD SEPARATELY)
7	2200-015KJKNF	HOLDDOWN KIT
8	2300-014JKCP	FLANGE, BODY
9	250-025KJKABNF	HOSE, SS BRAIDED 5/16-24 X 3/8
10	250-006KJKABNF	HOSE WITH FIBER WASHER
11	49-004JKRBF	LOCKNUT
12	807-112JKNF	WASHER
13	333-103JKNF	RUBBER WASHER
14	-----	SHANK AND FLANGE ASSEMBLY
15	GN2AJKABCP	SPOUT, GN 5-1/4" C-C
16	GN8AJKABCP	SPOUT, GN 8" C-C
17	E3JKABCP	OUTLET, AERATOR 2.2 GPM
18	E35JKABCP	OUTLET, AERATOR 1.5 GPM
19	E3VPJKABCP	OUTLET VP, AERATOR 2.2 GPM
20	E2805-5JKABCP	OUTLET VP, SPRAY 0.5 GPM
21	3-024JKRCF	KEY, VP
22	665-505JKNF	3/32" HEX KEY
23	2200-002KJKNF	WRENCH & HEX KEY