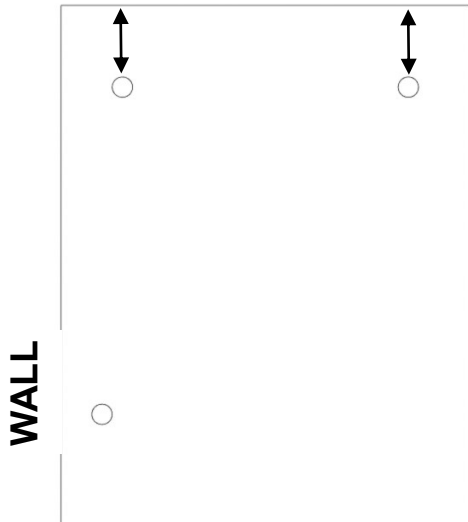
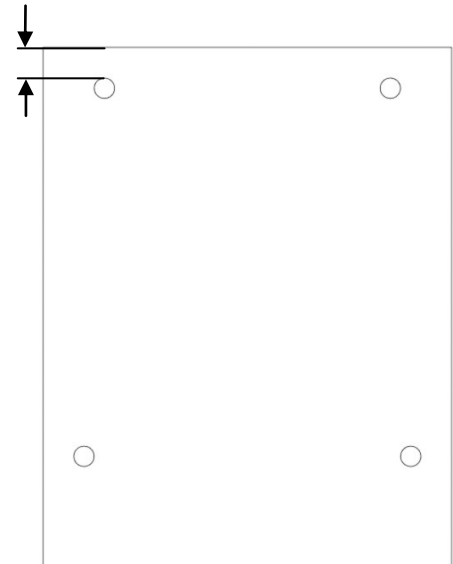


IDENTIFY GLASS PANELS

If the panels have the **Aquaglide XP** coating, there will be labels identifying the coated side. Install the panels with the coated side to the inside.



The **Inner Panel** has 2 mounting holes lower on the panel.



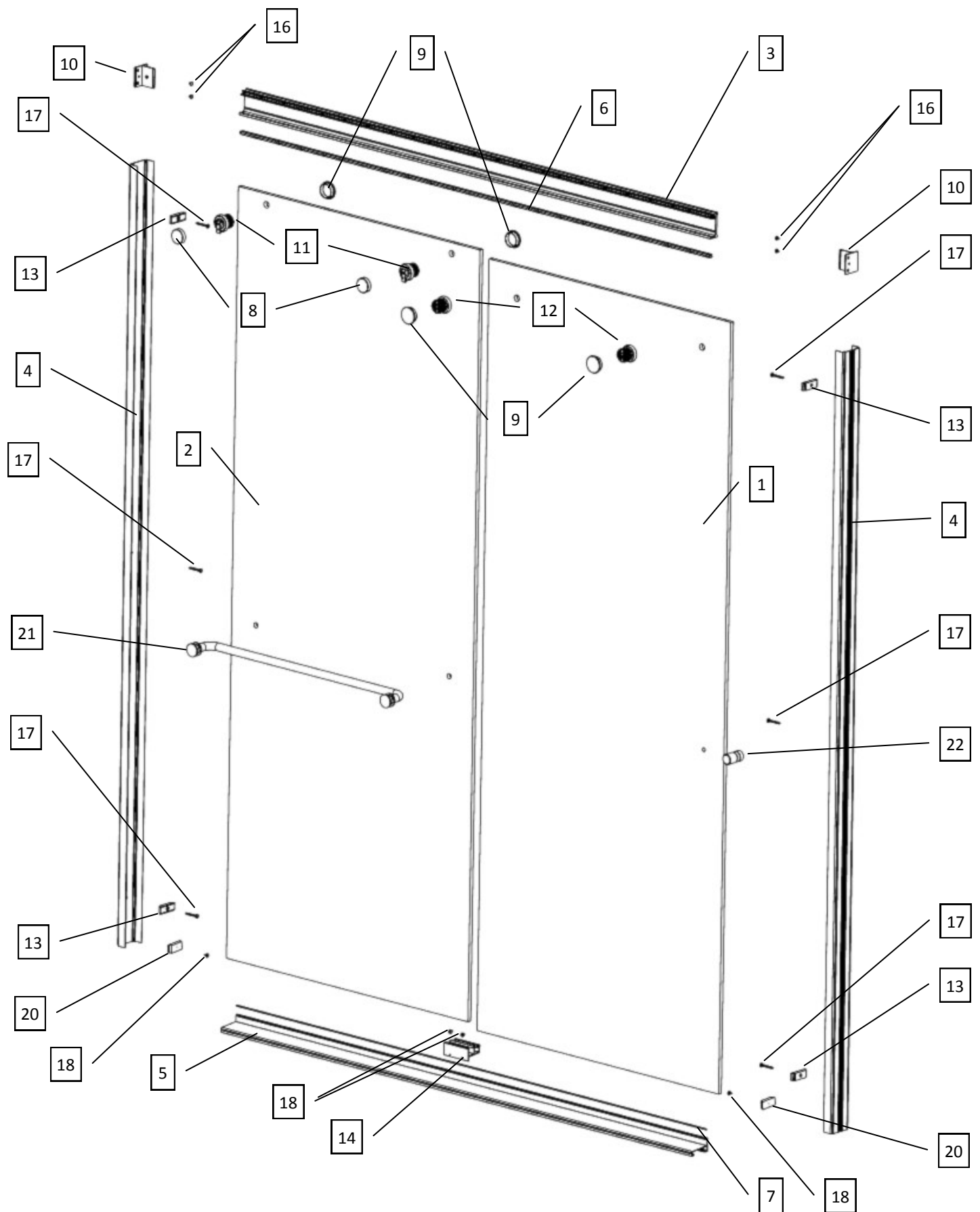
The **Outer Panel** has 2 mounting holes higher on the panel.

Parts List—3/8" Glass Exposed Roller Bypass Slider

ITEM NO.	NUMBER	DESCRIPTION	QTY.
1		GLASS PANEL, OUTER	1
2		GLASS PANEL, INNER	1
3	SC923	HEADER	1
4	SC926	WALL JAMB	2
5	SC931	TRACK	1
6	LV09350060XBK00	ANTI-JUMP RAIL	1
7	SCV190-60	SILENCER TUB TRACK, VINYL	1
	PPRRTL01SV, OR, BN	PARTS PAK #1	
8	SC4251	CAP, BACK	2
9	SC4250	CAP, FRONT	4
10	SC4253	WALL MOUNT BRACKET	2
	PPRTL03XX	PARTS PAK #3	
11	SC4249T	ROLLER, TOP	2
12	SC4249B	ROLLER, BOTTOM	2
13	SC4259	BUMPER	4
14	SC8954	BOTTOM GUIDE	1
15**	SC4106	PLASTIC WALL PLUG	10
16	SCR02	#8 X 1/4 TRUSS HEAD SCREW	6
17	SCR10	#8 x 1-1/2" TRUSS HEAD SCREW	10
18	SCR30	#8 x 3/8"	4
19**	SC5116	2.5mm ALLEN WRENCH	1
20	SCV960	HOLD DOWN	2
	AVAILABLE HARDWARE		
21	TB44xx	TOWEL BAR	1
22	KBCS-50AI	KNOB	1

** Part is not shown

Exploded View—3/8" Glass Exposed Roller Bypass Slider

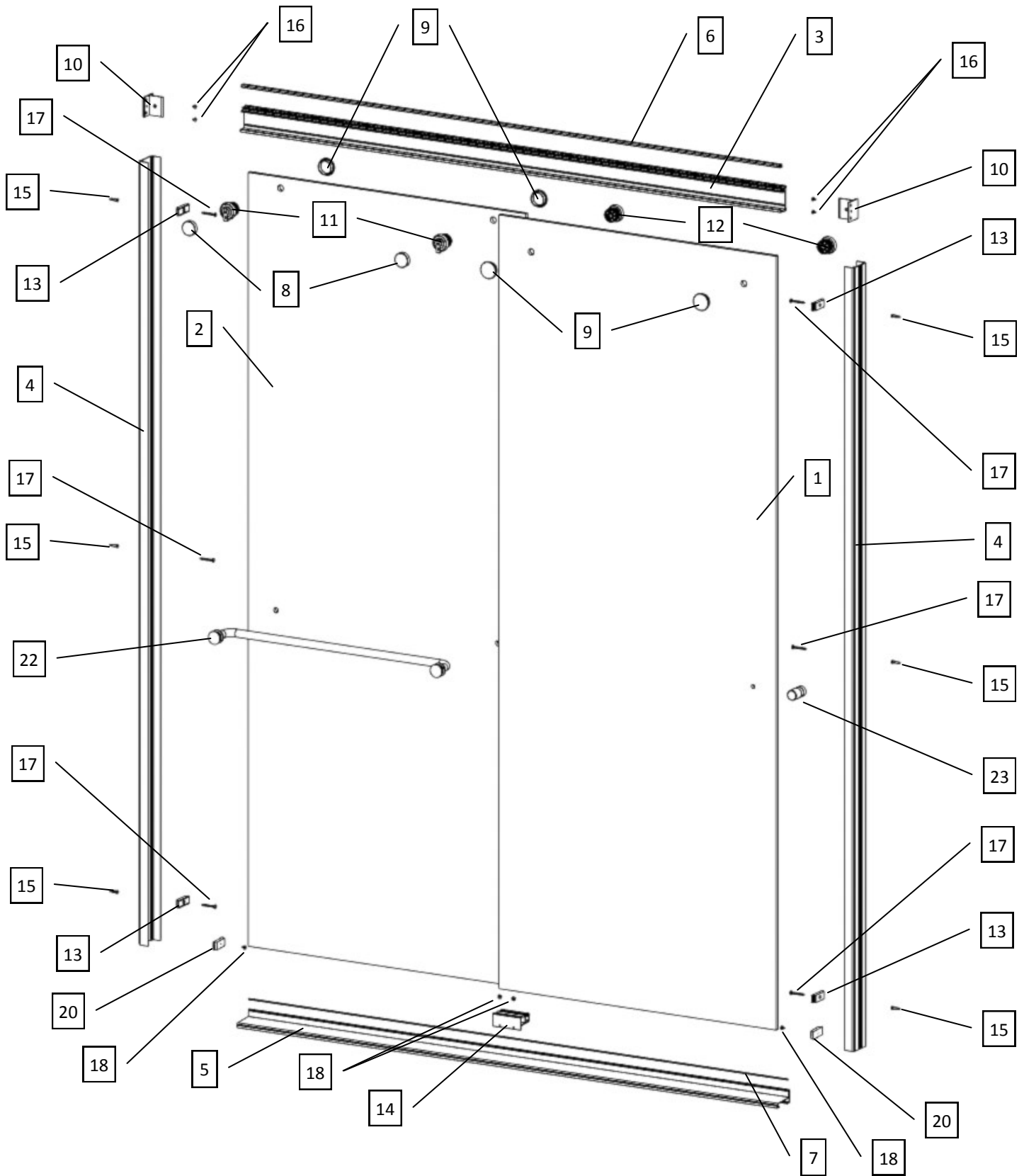


Parts List—1/4" Glass Exposed Roller Bypass Slider

ITEM NO.	NUMBER	DESCRIPTION	QTY.
1		GLASS PANEL, OUTER	1
2		GLASS PANEL, INNER	1
3	SC923	HEADER	1
4	SC926	WALL JAMB	2
5	SC931	TRACK	1
6	LV09350060XBK00	ANTI-JUMP RAIL	1
7	SCV190-60	SILENCER TUB TRACK, VINYL	1
	PPRTL01SV, OR, BN	PARTS PAK #1	
8	SC4251	CAP, BACK	2
9	SC4250	CAP, FRONT	4
10	SC4253	WALL MOUNT BRACKET	2
	PPRTL02XX	PARTS PAK #2	
11	SC4249T	ROLLER, TOP	2
12	SC4249B	ROLLER, BOTTOM	2
13	SC4259	BUMPER	4
14	SC8953	BOTTOM GUIDE	1
15	SC4106	PLASTIC WALL PLUG	10
16	SCR02	#8 X 1/4 TRUSS HEAD SCREW	6
17	SCR10	#8 x 1-1/2" TRUSS HEAD SCREW	10
18	SCR30	#8 x 3/8"	4
19**	SC5116	2.5mm ALLEN WRENCH	1
20	SCV960	HOLD DOWN	2
21**	SC5118	M5-0.8 X 25	2
	AVAILABLE HARDWARE		
22	TB44xx	TOWEL BAR	1
23	KBCS-50AI	KNOB	1

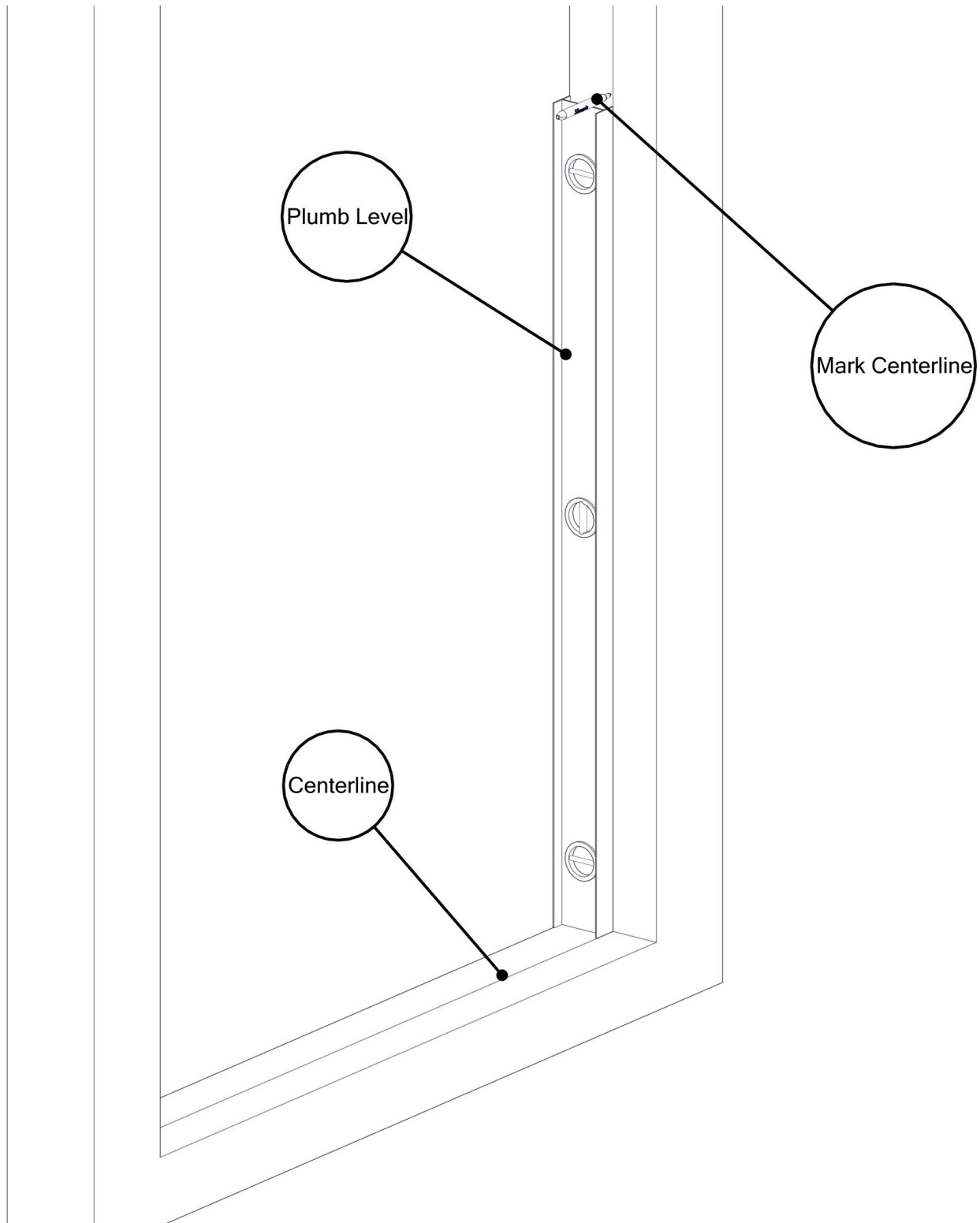
** Part is not shown

Exploded View—1/4" Glass Exposed Roller Bypass Slider



1 Determine location of the unit centerline on the threshold.

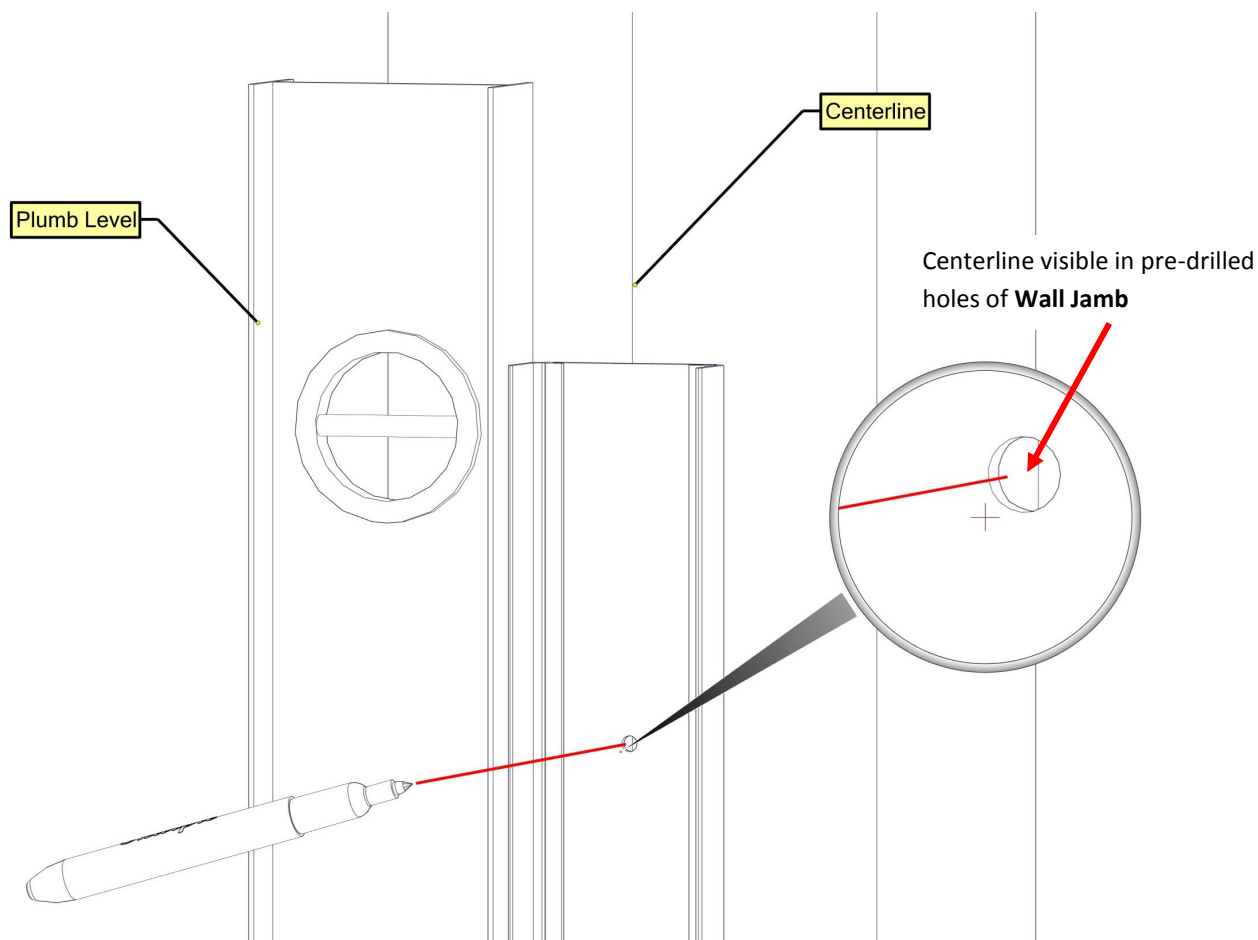
Mark a continuous centerline on both walls starting where the threshold centerline meets the wall. Use a level to ensure the wall centerline is plumb and straight. The wall centerline should be a minimum of the unit height from the threshold.



2 Place a **Wall Jamb** on each wall. Align the **Wall Jamb** with the marked centerline running through the pre-drilled holes.

Use a level to confirm the **Wall Jamb** is plumb. Mark the hole locations.

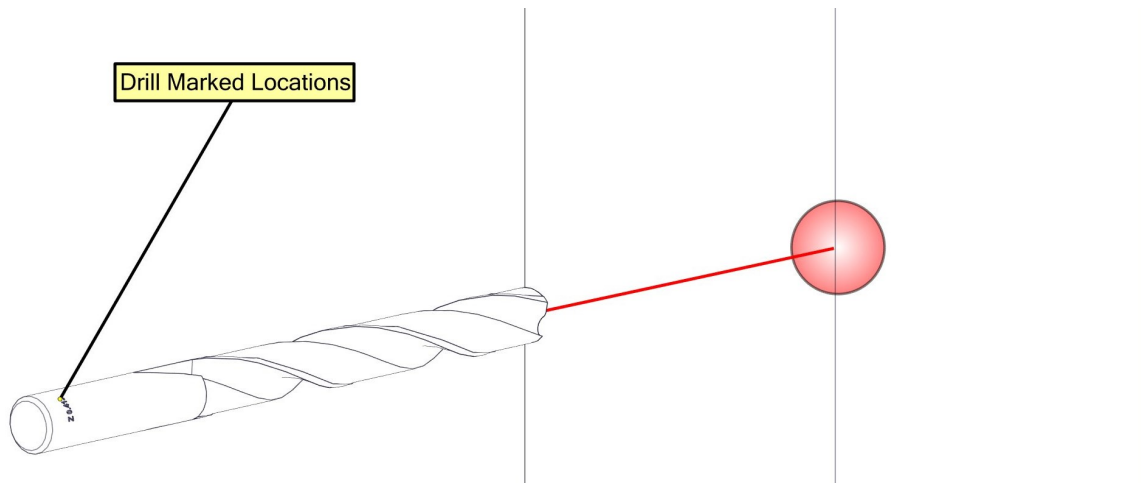
If custom size door, make sure the correct end of the wall jamb is towards the top. The correct top-side will have the hole 4-7/16" from the edge.



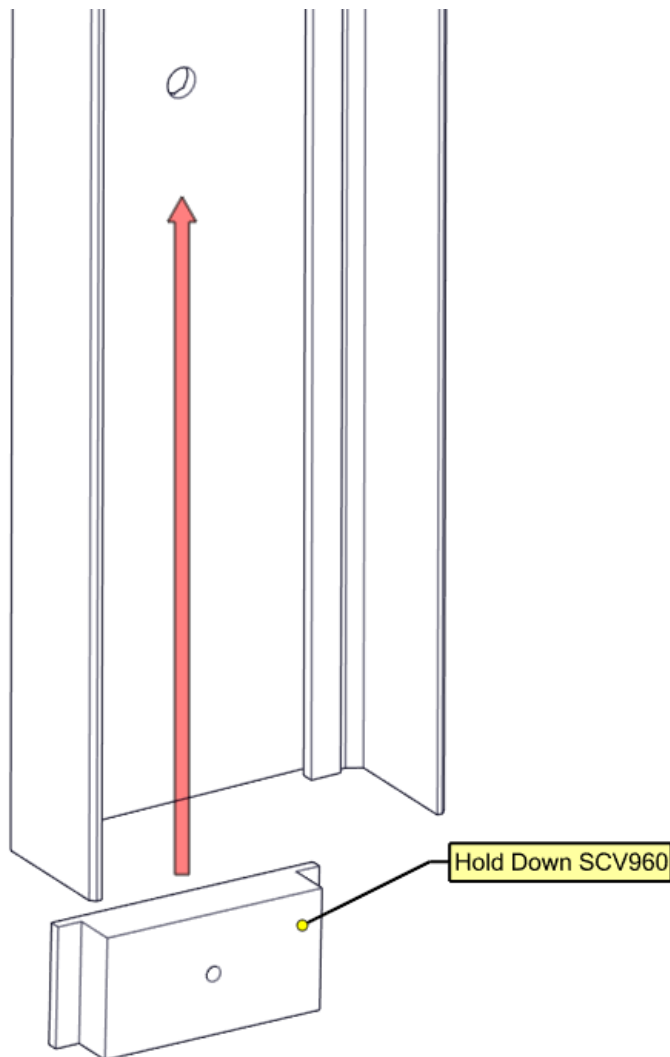
PRO-TIP: The top of the wall jambs come with round edges.

Depending how your wall and threshold meet, you maybe required to modify the wall jamb to fit.

3 Drill the 6 marked locations. Drill holes as described on page 4

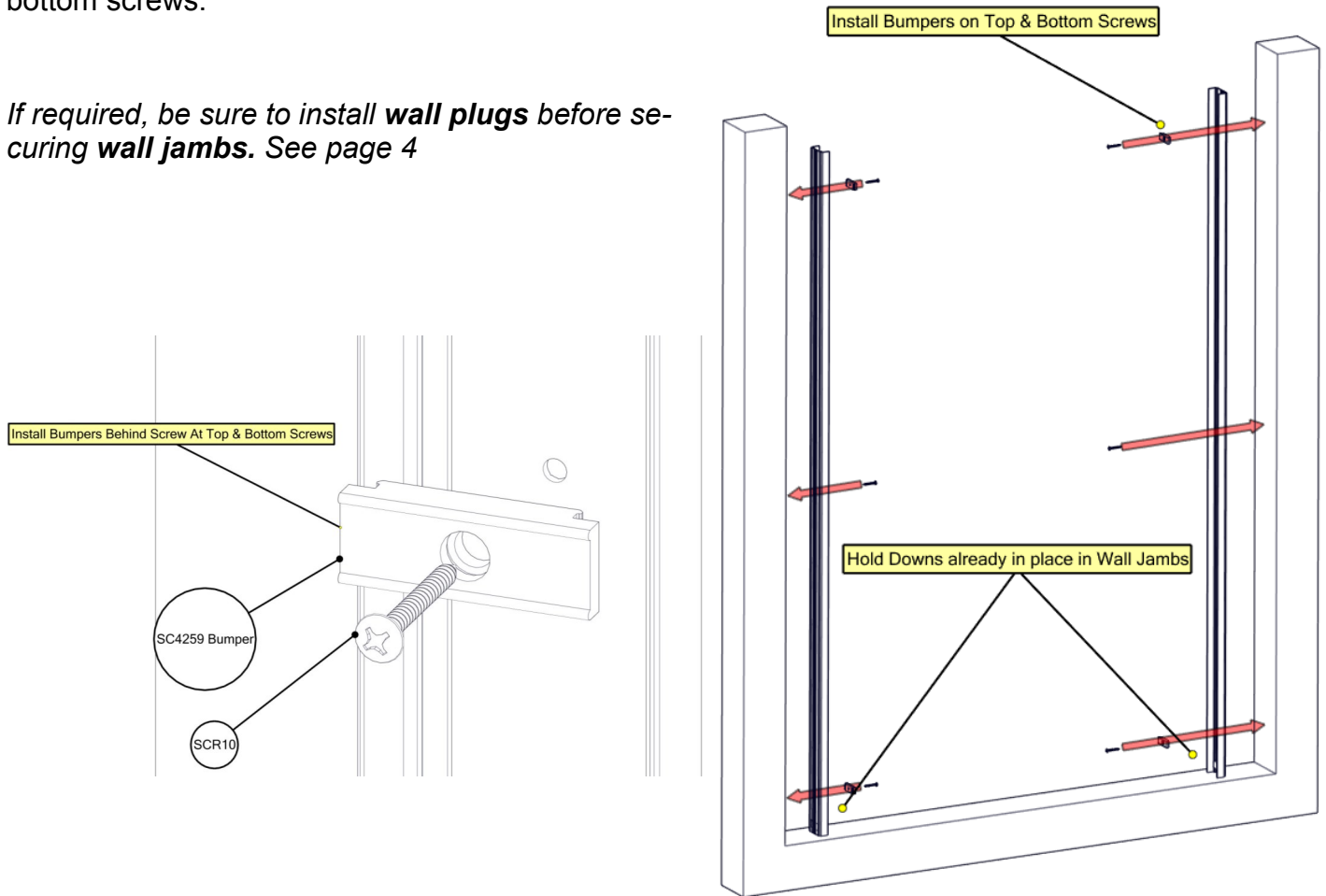


4 Insert the **SCV960 Hold Downs** on the bottom of the **Wall Jamb**s, slide it up to about 1 inch below the predrilled hole, and use tape to temporarily hold them up and keep them out of the way.

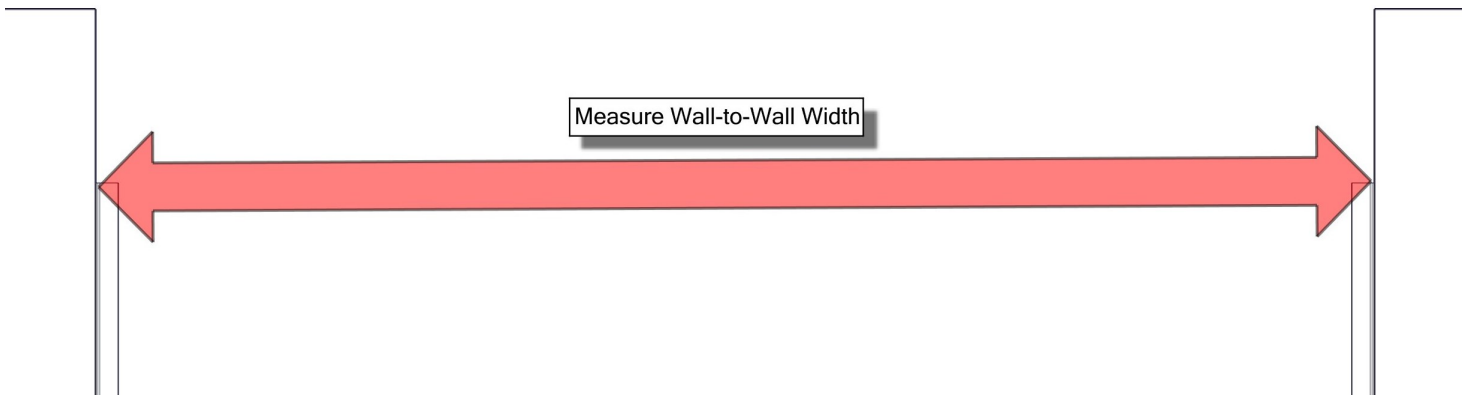


5 Set the **Wall Jambs** in place. Secure with 6 **SCR10 Wall Jamb Screws**. Install 4 **SC4259 Bumpers**, 1 each on top and bottom screws.

*If required, be sure to install **wall plugs** before securing **wall jambs**. See page 4*



6 Measure the Wall-to-Wall distance at the top of the **Wall Jambs**.
Record the measurement [T]: _____"



7 Subtract 1/2" from the measurement [T]. $[T] - 1/2" = \text{_____} "$ [HC]
Cut the **Header** to length [HC].