

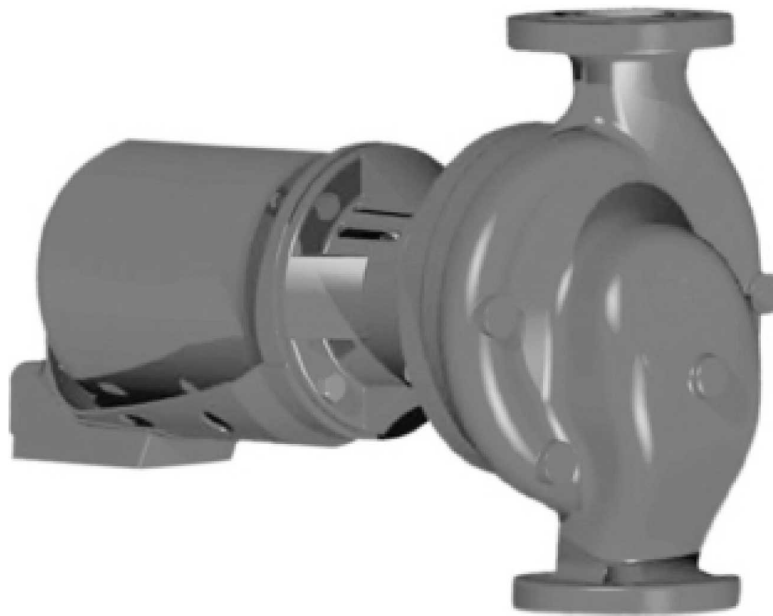


ITT

Bell & Gossett

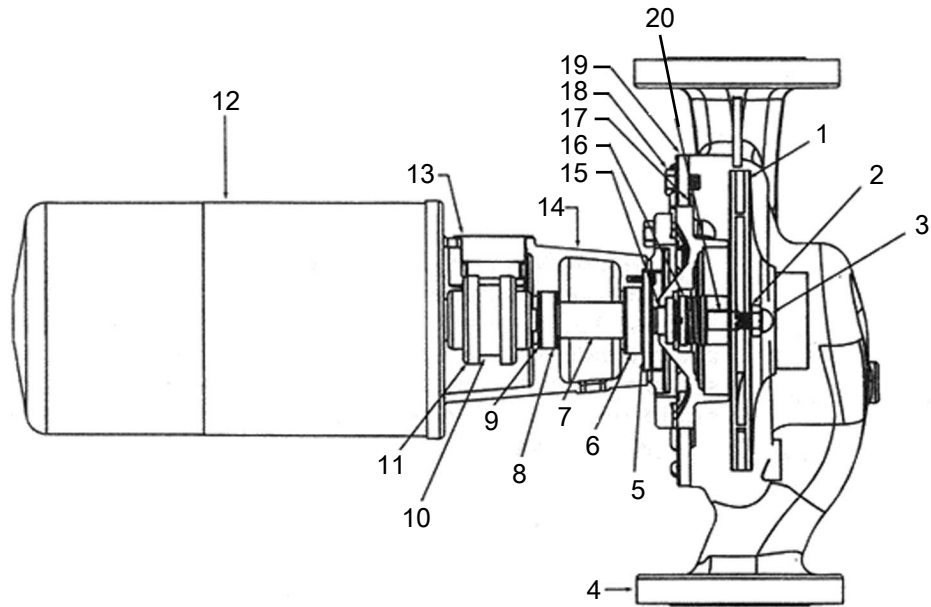
Installation, Operation, and Maintenance Manual

Series 60



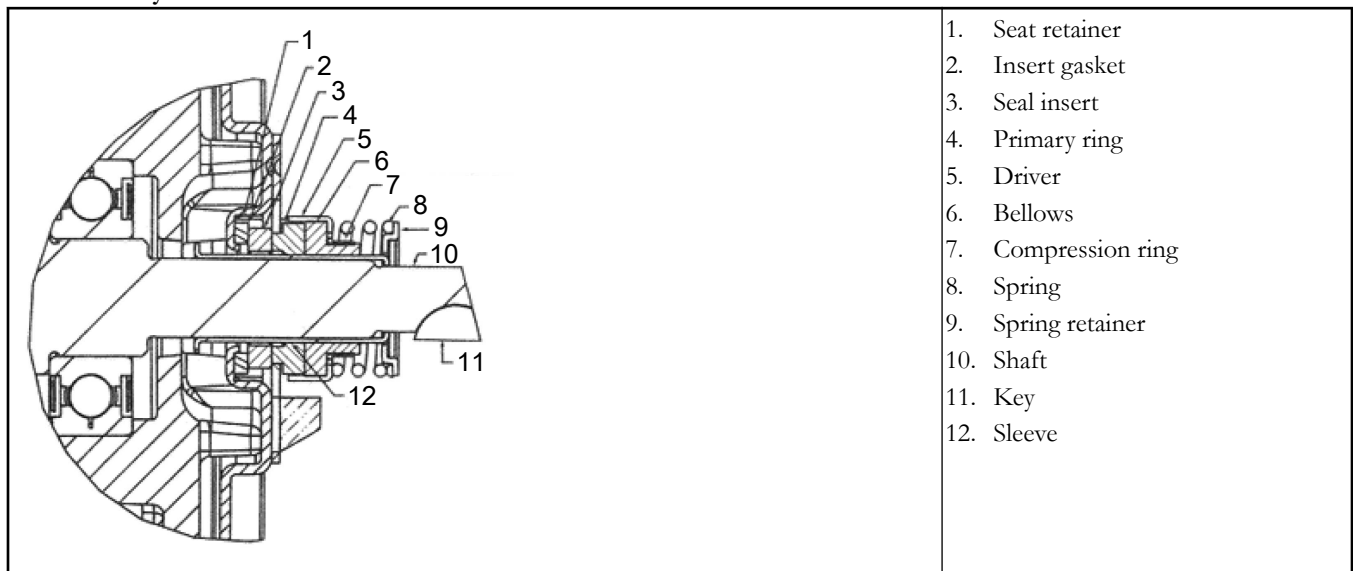
Engineered for life

Pump body for sizes 1-1/2 x 7 and 2 x 7



1. Impeller	11. Coupler
2. Impeller lockwasher	12. Motor
3. Impeller nut	13. Coupler cover
4. Volute	14. Bearing housing
5. Bearing retainer	15. Shaft sleeve
6. Front bearing	16. Seal assembly
7. Shaft	17. Volute gasket
8. Rear bearing	18. Volute capscrew
9. Wave spring	19. Coverplate
10. Coupler elastomeric insert	20. Key

Seal assembly



1. Seat retainer
2. Insert gasket
3. Seal insert
4. Primary ring
5. Driver
6. Bellows
7. Compression ring
8. Spring
9. Spring retainer
10. Shaft
11. Key
12. Sleeve