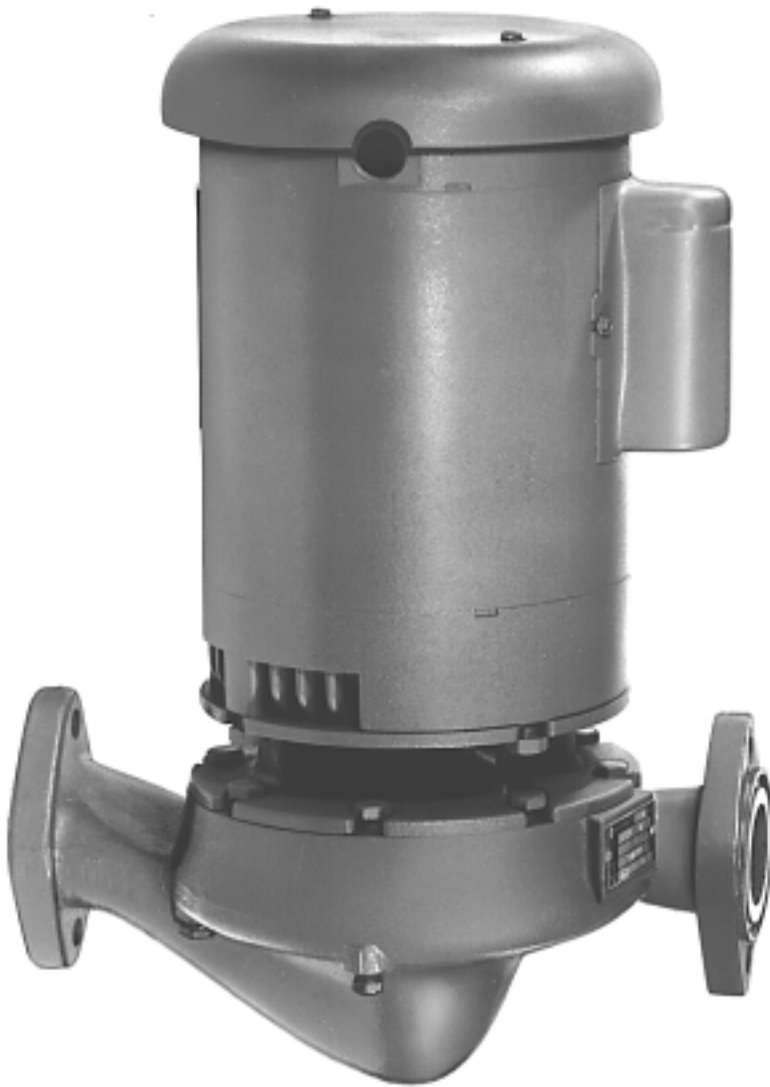


Bell & Gossett®
Parts List CP-112H-PL



Replacement Parts for
Series 90
In-Line Mounted
Centrifugal Pumps

Engineered for life

SERIES 90

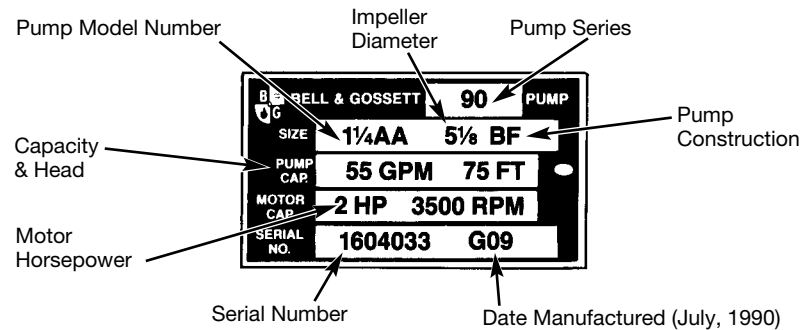
Index

How to Use This Parts List	3
Exploded Views of Series 90	4
Standard Size Pump Designations	5
1AA Pump Parts	6
1 ¹ / ₄ AA Pump Parts	7
1 ¹ / ₂ AA Pump Parts	8
2AA Pump Parts	9
1 ¹ / ₂ A Pump Parts	10
2A Pump Parts	11



How to use this PARTS LIST

The pump nameplate identifies the pump by pipe size, pump construction and impeller diameter as shown below.

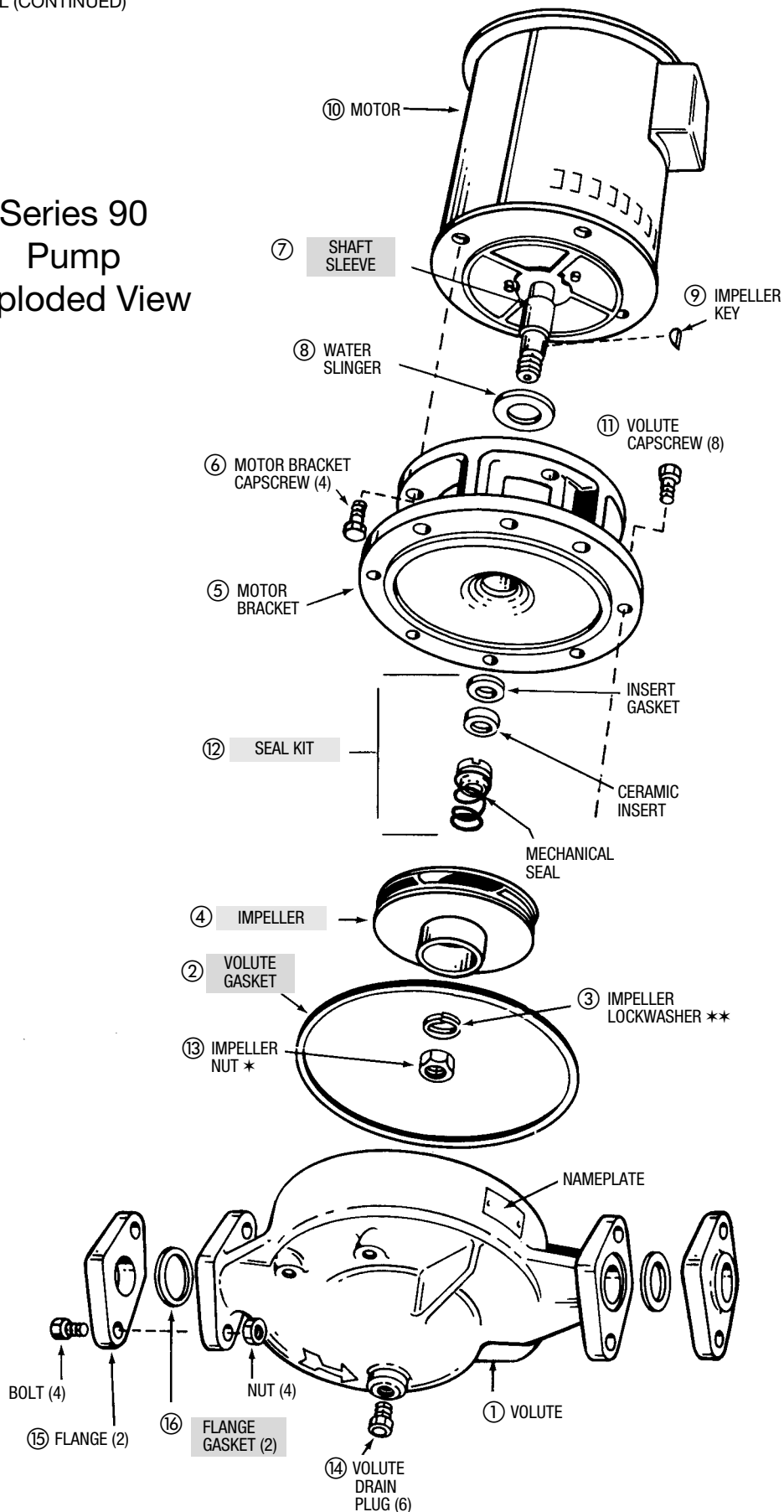


The nameplate above identifies the pump as a Series 90, 1 1/4 AA in bronze fitted (BF) construction. The impeller diameter is 5 1/8" and is capable of pumping 55 GPM at 75 FT. The motor horsepower is 2, the RPM is 3500. The serial number specifically identifies the unit for future reference. **DO NOT REMOVE THE NAMEPLATE.** It is important when ordering replacement parts to furnish complete nameplate data.

The following procedure will result in proper parts selection:

1. Determine from the nameplate the pump size, pump construction and impeller diameter.
2. Measure the shaft diameter at the seal.
3. Refer to the index for the page number of the parts breakdown for the specific size pump.
4. Find the proper column in the parts breakdown for the pump construction involved.
5. Select part numbers, using the drawing on page 4 for identification. Where shaft diameter affects parts selection, use the measurement secured in step 2.
6. In some instances, motor brackets vary with motor frame sizes. Use the motor frame number from the motor nameplate to select the proper motor bracket. Always give complete motor nameplate data when ordering replacement motors.

Series 90 Pump Exploded View



* — Impeller Capscrew on some 90 "A" Size Pumps.

■ — Factory recommended spare parts.

** — Impeller Gasket on All Bronze 90 "AA" Size Pumps.

STANDARD SIZE DESIGNATIONS

PUMP SIZE	MODEL NUMBER	MOTOR ⑩	HP	VOLTAGE	PH	RPM	FR	IMPELLER ④	IMP. DIA.	SEAL KIT† ⑫
1 1/4"AA	90-1S	169067	1/2	115/230	1	3500	56	P58251	37/16"	118681LF
	90-1T	169213	1/2	208-230/460	3	3500	56	P58251	37/16"	118681LF
	90-2S	169068	3/4	115/230	1	3500	56	P58280	4"	118681LF
	90-2T	169214	3/4	208-230/460	3	3500	56	P58280	4"	118681LF
	90-3S	169069	1	115/230	1	3500	56	P58252	4 3/8"	118681LF
	90-3T	169215	1	208-230/460	3	3500	56	P58252	4 3/8"	118681LF
	90-4S	169216	1 1/2	115/230	1	3500	56	P58253	5"	186499LF
	90-4T	169217	1 1/2	208-230/460	3	3500	56	P58253	5"	186499LF
	90-5T	169218	2	208-230/460	3	3500	56	P56610	5 1/4"	186499LF
1 1/2"AA	90-6S	169068	3/4	115/230	1	3500	56	P56771	3 1/2"	118681LF
	90-6T	169214	3/4	208-230/460	3	3500	56	P56771	3 1/2"	118681LF
	90-7S	169069	1	115/230	1	3500	56	P56770	3 5/8"	118681LF
	90-7T	169215	1	208-230/460	3	3500	56	P56770	3 5/8"	118681LF
	90-8S	169216	1 1/2	115/230	1	3500	56	P56753	4"	186499LF
	90-8T	169217	1 1/2	208-230/460	3	3500	56	P56753	4"	186499LF
	90-9T	169218	2	208-230/460	3	3500	56	P56752	4 1/2"	186499LF
	90-10T	169219	3	208-230/460	3	3500	56	P56751	5"	186499LF
	2"AA	90-11S	169216	1 1/2	115/230	1	3500	56	P58254	3 11/16"
90-11T		169217	1 1/2	208-230/460	3	3500	56	P58254	3 11/16"	186499LF
90-12T		169218	2	208-230/460	3	3500	56	P56873	3 15/16"	186499LF
90-13T		169219	3	208-230/460	3	3500	56	P56872	4 3/8"	186499LF
90-14T		169220	5	208-230/460	3	3500	56	P56871	4 7/8"	186499LF
1 1/2"A	90-15T	169219	3	208-230/460	3	3500	56	P57485	5 1/4"	186499LF
	90-16T	169220	5	208-230/460	3	3500	56	P57483	5 7/8"	186499LF
	90-17T	188133	7 1/2	200	3	3500	184JM	P85574	6 5/8"	186862LF
	90-17T	188131	7 1/2	208-230/460	3	3500	184JM	P85574	6 5/8"	186862LF
	90-18T	188153	10	200	3	3500	213JM	P85456	7"	186862LF
	90-18T	188152	10	208-230/460	3	3500	213JM	P85456	7"	186862LF
2"A	90-19T	188133	7 1/2	200	3	3500	184JM	P85580	5 3/4"	186862LF
	90-19T	188131	7 1/2	208-230/460	3	3500	184JM	P85580	5 3/4"	186862LF
	90-20T	188153	10	200	3	3500	213JM	P85579	6 1/2"	186862LF
	90-20T	188152	10	208-230/460	3	3500	213JM	P85579	6 1/2"	186862LF
	90-21T	188173	15	200	3	3500	215JM	P85578	7"	186862LF
	90-21T	188172	15	208-230/460	3	3500	215JM	P85578	7"	186862LF
1 1/4"AA	90-31S	169200	1/4	115/230	1	1750	56	P56560	5 1/8"	118681LF
	90-31T	169201	1/4	208-230/460	3	1750	56	P56560	5 1/8"	118681LF
1 1/2"AA	90-33S	169204	1/2	115/230	1	1750	56	P56750	5 1/4"	186499LF
	90-33T	169205	1/2	208-230/460	3	1750	56	P56750	5 1/4"	186499LF
2"AA	90-34S	169206	3/4	115/230	1	1750	56	P56870	5 1/4"	186499LF
	90-34T	169207	3/4	208-230/460	3	1750	56	P56870	5 1/4"	186499LF
1 1/2"A	90-35S	169204	1/2	115/230	1	1750	56	P57481	5 3/4"	186499LF
	90-35T	169205	1/2	208-230/460	3	1750	56	P57481	5 3/4"	186499LF
	90-36S	169206	3/4	115/230	1	1750	56	P85581	6 3/8"	186499LF
	90-36T	169207	3/4	208-230/460	3	1750	56	P85581	6 3/8"	186499LF
	90-37S	169208	1	115/230	1	1750	56	P57441	7"	186499LF
	90-37T	169209	1	208-230/460	3	1750	56	P57441	7"	186499LF
2"A	90-39S	169208	1	115/230	1	1750	56	P85586	6"	186499LF
	90-39T	169209	1	208-230/460	3	1750	56	P85586	6"	186499LF
	90-40S	169210	1 1/2	115/230	1	1750	56	P85585	6 1/2"	186499LF
	90-40T	169211	1 1/2	208-230/460	3	1750	56	P85585	6 1/2"	186499LF
	90-41T	169212	2	208-230/460	3	1750	56	P85584	7"	186499LF

†Buna/Carbon/Ceramic.

 - Factory recommended spare parts.

1AA

ITEM NO.	DESCRIPTION	PUMP CONSTRUCTION		
		BRONZE FITTED	ALL BRONZE	BRONZE FITTED W/EPT SEAL

PARTS COMMON TO BOTH SIZE PUMPS

1	Volute	P57041	P2000031	P57041
14	Volute Drain Plug (6)	P39020	P39470	P39020
11	Volute Capscrew (8)	P10359	P10359	P10359
2	Volute Gasket	P57410	P57410	P57410
3	Impeller Gasket	NONE	P57000	NONE
15	Flange (2)	P01510	P00836	P01510
16	Flange Gasket Set	118368	118368	118368
	Fastener Package	P64910	P64900	P64910
6	Motor Bracket Capscrew (4)	DJ0063	DJ0063	DJ0063

PARTS FOR PUMPS WITH 1/2" SEAL (Determine Pump Seal Size from Motor Selection Chart Below)

4	Impeller (State Diameter)	P56550	P56550	P56550
13	Impeller Nut	P00651	P2000236	P00651
3	Impeller Lockwasher	P04660	NONE	P04660
9	Impeller Key	P04945	P04945	P04945
8	Water Slinger	P77335	P77335	P77335
12	Seal – Std. ¹	118681LF	118681LF	185230LF
12	Seal – Opt. ²	185382	185382	185382
7	Shaft Sleeve	186943LF	186943LF	186943LF
5	Motor Bracket	P62872	P62874	P62872

PARTS FOR PUMPS WITH 3/4" SEAL (Determine Pump Seal Size from Motor Selection Chart Below)

4	Impeller (State Diameter)	P56610	P56610	P56610
13	Impeller Nut	P59570	P2000220	P59570
3	Impeller Lockwasher	P11220	NONE	P11220
9	Impeller Key	P51750	P51750	P51750
8	Water Slinger	P81946	P81946	P81946
12	Seal – Std. ¹	186499LF	186499LF	185223LF
12	Seal – Opt. ²	186945	186945	186945
7	Shaft Sleeve	186944LF	186944LF	186944LF
5	Motor Bracket	P77067	P62892	P77067

¹Buna/Carbon/Ceramic ²EPR/SiC/SiC

	– Factory recommended spare parts.
--	------------------------------------

MOTOR SELECTION CHART

HP	1 PHASE 1800 RPM	3 PHASE 1800 RPM	SEAL SHAFT DIA.	1 PHASE 3600 RPM	3 PHASE 3600 RPM	SEAL SHAFT DIA.
1/4 HP	169200	169201	1/2"	–	–	–
1/3 HP	169202	169203	1/2"	–	–	–
1/2 HP	169204	169205	3/4"	–	–	–
3/4 HP	–	–	–	169068	169214	1/2"
1 HP	–	–	–	169069	169215	1/2"
1 1/2 HP	–	–	–	169216	169217	3/4"
2 HP	–	–	–	–	169218	3/4"

1 1/4 AA

ITEM NO.	DESCRIPTION	PUMP CONSTRUCTION		
		BRONZE FITTED	ALL BRONZE	BRONZE FITTED W/EPT SEAL

PARTS COMMON TO BOTH SIZE PUMPS

1	Volute	P57081	P2000037	P57081
14	Volute Drain Plug (6)	P39020	P39470	P39020
11	Volute Capscrew (8)	P10359	P10359	P10359
2	Volute Gasket	P57410	P57410	P57410
3	Impeller Gasket	NONE	P57000	NONE
15	Flange (2)	P03250	P00837	P03250
16	Flange Gasket Set	118368	118368	118368
	Fastener Package	P64910	P64900	P64910
6	Motor Bracket Capscrew (4)	DJ0063	DJ0063	DJ0063

PARTS FOR PUMPS WITH 1/2" SEAL (Determine Pump Seal Size from Motor Selection Chart Below)

4	Impeller (State Diameter)	P56550	P56550	P56550
13	Impeller Nut	P00651	P2000236	P00651
3	Impeller Lockwasher	P04660	NONE	P04660
9	Impeller Key	P04945	P04945	P04945
8	Water Slinger	P77335	P77335	P77335
12	Seal – Std. ¹	118681LF	118681LF	185230LF
12	Seal – Opt. ²	185382	185382	185382
7	Shaft Sleeve	186943LF	186943LF	186943LF
5	Motor Bracket	P62872	P62874	P62872

PARTS FOR PUMPS WITH 3/4" SEAL (Determine Pump Seal Size from Motor Selection Chart Below)

4	Impeller (State Diameter)	P56610	P56610	P56610
13	Impeller Nut	P59570	P2000220	P59570
3	Impeller Lockwasher	P11220	NONE	P11220
9	Impeller Key	P51750	P51750	P51750
8	Water Slinger	P81946	P81946	P81946
12	Seal – Std. ¹	186499LF	186499LF	185223LF
12	Seal – Opt. ²	186945	186945	186945
7	Shaft Sleeve	186944LF	186944LF	186944LF
5	Motor Bracket	P77067	P62892	P77067

¹Buna/Carbon/Ceramic ²EPR/SiC/SiC

	– Factory recommended spare parts.
--	------------------------------------

MOTOR SELECTION CHART

HP	1 PHASE 1800 RPM	3 PHASE 1800 RPM	SEAL SHAFT DIA.	1 PHASE 3600 RPM	3 PHASE 3600 RPM	SEAL SHAFT DIA.
1/4 HP	169200	169201	1/2"	–	–	–
1/3 HP	169202	169203	1/2"	–	–	–
1/2 HP	169204	169205	3/4"	169067	169213	1/2"
3/4 HP	–	–	–	169068	169214	1/2"
1 HP	–	–	–	169069	169215	1/2"
1 1/2 HP	–	–	–	169216	169217	3/4"
2 HP	–	–	–	–	169218	3/4"
3 HP	–	–	–	–	169219	3/4"

1 1/2 AA

ITEM NO.	DESCRIPTION	PUMP CONSTRUCTION		
		BRONZE FITTED	ALL BRONZE	BRONZE FITTED W/EPT SEAL

PARTS COMMON TO BOTH SIZE PUMPS

1	Volute	P57151	P2000040	P57151
14	Volute Drain Plug (6)	P39020	P39470	P39020
11	Volute Capscrew (8)	P10359	P10359	P10359
2	Volute Gasket	P57410	P57410	P57410
3	Impeller Gasket	NONE	P57000	NONE
15	Flange (2)	P03410	P2000090	P03410
16	Flange Gasket Set	118373	118373	118373
	Fastener Package	P64940	P64930	P64940
6	Motor Bracket Capscrew (4)	DJ0063	DJ0063	DJ0063

PARTS FOR PUMPS WITH 1/2" SEAL (Determine Pump Seal Size from Motor Selection Chart Below)

4	Impeller (State Diameter)	P56740	P56740	P56740
13	Impeller Nut	P00651	P2000236	P00651
3	Impeller Lockwasher	P04660	NONE	P04660
9	Impeller Key	P04945	P04945	P04945
8	Water Slinger	P77335	P77335	P77335
12	Seal – Std. ¹	118681LF	118681LF	185230LF
12	Seal – Opt. ²	185382	185382	185382
7	Shaft Sleeve	186943LF	186943LF	186943LF
5	Motor Bracket	P62872	P62874	P62872

PARTS FOR PUMPS WITH 3/4" SEAL (Determine Pump Seal Size from Motor Selection Chart Below)

4	Impeller (State Diameter)	P56750	P56750	P56750
13	Impeller Nut	P59570	P2000220	P59570
3	Impeller Lockwasher	P11220	NONE	P11220
9	Impeller Key	P51750	P51750	P51750
8	Water Slinger	P81946	P81946	P81946
12	Seal – Std. ¹	186499LF	186499LF	185223LF
12	Seal – Opt. ²	186945	186945	186945
7	Shaft Sleeve	186944LF	186944LF	186944LF
5	Motor Bracket	P77067	P62892	P77067

¹Buna/Carbon/Ceramic ²EPR/SiC/SiC

– Factory recommended spare parts.

MOTOR SELECTION CHART

HP	1 PHASE 1800 RPM	3 PHASE 1800 RPM	SEAL SHAFT DIA.	1 PHASE 3600 RPM	3 PHASE 3600 RPM	SEAL SHAFT DIA.
1/4 HP	169200	169201	1/2"	–	–	–
1/3 HP	169202	169203	1/2"	–	–	–
1/2 HP	169204	169205	3/4"	–	–	–
3/4 HP	169206	169207	3/4"	169068	169214	1/2"
1 HP	–	–	–	169069	169215	1/2"
1 1/2 HP	–	–	–	169216	169217	3/4"
2 HP	–	–	–	–	169218	3/4"
3 HP	–	–	–	–	169219	3/4"
5 HP	–	–	–	–	169220	3/4"

2AA

ITEM NO.	DESCRIPTION	PUMP CONSTRUCTION		
		BRONZE FITTED	ALL BRONZE	BRONZE FITTED W/EPT SEAL

PARTS COMMON TO BOTH SIZE PUMPS

1	Volute	P57221	P2000043	P57221
14	Volute Drain Plug (6)	P39020	P39470	P39020
11	Volute Capscrew (8)	P10359	P10359	P10359
2	Volute Gasket	P57410	P57410	P57410
3	Impeller Gasket	NONE	P57000	NONE
15	Flange (2)	F14200	P2000078	F14200
16	Flange Gasket Set	118378	118378	118378
	Fastener Package	P65031	P65030	P65031
6	Motor Bracket Capscrew (4)	DJ0063	DJ0063	DJ0063

PARTS FOR PUMPS WITH 1/2" SEAL (Determine Pump Seal Size from Motor Selection Chart Below)

4	Impeller (State Diameter)	P56830	P56830	P56830
13	Impeller Nut	P00651	P2000236	P00651
3	Impeller Lockwasher	P04660	NONE	P04660
9	Impeller Key	P04945	P04945	P04945
8	Water Slinger	P77335	P77335	P77335
12	Seal – Std. ¹	118681LF	118681LF	185230LF
12	Seal – Opt. ²	185382	185382	185382
7	Shaft Sleeve	186943LF	186943LF	186943LF
5	Motor Bracket	P62872	P62874	P62872

PARTS FOR PUMPS WITH 3/4" SEAL (Determine Pump Seal Size from Motor Selection Chart Below)

4	Impeller (State Diameter)	P56870	P56870	P56870
13	Impeller Nut	P59570	P2000220	P59570
3	Impeller Lockwasher	P11220	NONE	P11220
9	Impeller Key	P51750	P51750	P51750
8	Water Slinger	P81946	P81946	P81946
12	Seal – Std. ¹	186499LF	186499LF	185223LF
12	Seal – Opt. ²	186945	186945	186945
7	Shaft Sleeve	186944LF	186944LF	186944LF
5	Motor Bracket	P77067	P62892	P77067

¹Buna/Carbon/Ceramic ²EPR/SiC/SiC

	– Factory recommended spare parts.
--	------------------------------------

MOTOR SELECTION CHART

HP	1 PHASE 1800 RPM	3 PHASE 1800 RPM	SEAL SHAFT DIA.	1 PHASE 3600 RPM	3 PHASE 3600 RPM	SEAL SHAFT DIA.
1/4 HP	169200	169201	1/2"	–	–	–
1/3 HP	169202	169203	1/2"	–	–	–
1/2 HP	169204	169205	3/4"	–	–	–
3/4 HP	169206	169207	3/4"	–	–	–
1 HP	169208	169209	3/4"	–	–	–
1 1/2 HP	–	–	–	169216	169217	3/4"
2 HP	–	–	–	–	169218	3/4"
3 HP	–	–	–	–	169219	3/4"
5 HP	–	–	–	–	169220	3/4"

1 1/2 A

ITEM NO.	DESCRIPTION	PUMP CONSTRUCTION		
		BRONZE FITTED	ALL BRONZE	BRONZE FITTED W/EPT SEAL

PARTS COMMON TO BOTH SIZE PUMPS

1	Volute	P57181	P2000046	P57181
14	Volute Drain Plug (6)	P39020	P39470	P39020
11	Volute Capscrew (8)	P40020	P40020	P40020
2	Volute Gasket	P57700	P57700	P57700
15	Flange (2)	P03410	P2000090	P03410
16	Flange Gasket Set	118373	118373	118373
	Fastener Package	P64940	P64930	P64940

PARTS FOR PUMPS WITH 3/4" SEAL (Determine Pump Seal Size from Motor Selection Chart Below)

4	Impeller (State Diameter)	P57441	P57441	P57441
13	Impeller Nut	P59570	P2000220	P59570
3	Impeller Lockwasher	P11220	P11220	P11220
9	Impeller Key	P51750	P51750	P51750
8	Water Slinger	P81946	P81946	P81946
12	Seal - Std. ¹	186499LF	186499LF	185223LF
12	Seal - Opt. ²	186945	186945	186945
7	Shaft Sleeve	186944LF	186944LF	186944LF
5	Motor Bracket	P62876	P62878	P62876
6	Motor Bracket Capscrew (4) for above	P40020	P40020	P40020

PARTS FOR PUMPS WITH 1 1/4" SEAL (Determine Pump Seal Size from Motor Selection Chart Below)

4	Impeller (State Diameter)	P85456	NOT OFFERED	P85456
	Impeller Capscrew	P52350		P52350
3	Impeller Lockwasher	J23874		J23874
9	Impeller Key	P49369		P49369
8	Water Slinger	P53550		P53550
12	Seal - Std. ¹	186862LF		186861LF
12	Seal - Opt. ²	P75423		P75423
7	Shaft Sleeve	185024LF		185024LF
5	Motor Bracket - Motor Frame 184JM	P62882		P62882
6	Motor Bracket Capscrew (4) for above	P40020		P40020
5	Motor Bracket - Motor Frames 213JM-215JM	P62886	P62886	
6	Motor Bracket Capscrew (4) for above	K03600	K03600	

¹Buna/Carbon/Ceramic ²EPR/SiC/SiC

	- Factory recommended spare parts.
--	------------------------------------

MOTOR SELECTION CHART

HP	1 PHASE 1800 RPM	3 PHASE 1800 RPM	SEAL SHAFT DIA.	1 PHASE 3600 RPM	3 PHASE 3600 RPM	SEAL SHAFT DIA.
1/2 HP	169204	169205	3/4"	-	-	-
3/4 HP	169206	169207	3/4"	-	-	-
1 HP	169208	169209	3/4"	-	-	-
1 1/2 HP	169210	169210	3/4"	-	-	-
2 HP	-	-	-	-	-	-
3 HP	-	-	-	-	169219	3/4"
5 HP	-	-	-	-	169220	3/4"
7 1/2 HP	-	-	-	-	188131+	1 1/4"
10 HP	-	-	-	-	188152++	1 1/4"

+ For 200V only use 188133

++ For 200V only use 188153

2A

ITEM NO.	DESCRIPTION	PUMP CONSTRUCTION		
		BRONZE FITTED	ALL BRONZE	BRONZE FITTED W/EPT SEAL

PARTS COMMON TO BOTH SIZE PUMPS

1	Volute	P57278	P2000049	P57278
14	Volute Drain Plug (6)	P39020	P39470	P39020
11	Volute Capscrew (8)	P40020	P40020	P40020
2	Volute Gasket	P57700	P57700	P57700
15	Flange (2)	F14200	P2000078	F14200
16	Flange Gasket Set	118378	118378	118378
	Fastener Package	P65031	P65030	P65031

PARTS FOR PUMPS WITH 3/4" SEAL (Determine Pump Seal Size from Motor Selection Chart Below)

4	Impeller (State Diameter)	P85584	P85584	P85584
13	Impeller Nut	P59570	P2000220	P59570
3	Impeller Lockwasher	P11220	P11220	P11220
9	Impeller Key	P51750	P51750	P51750
8	Water Slinger	P81946	P81946	P81946
12	Seal – Std. ¹	186499LF	186499LF	185223LF
12	Seal – Opt. ²	186945	186945	186945
7	Shaft Sleeve	186944LF	186944LF	186944LF
5	Motor Bracket	P62876	P62878	P62876
6	Motor Bracket Capscrew (4) for above	P40020	P40020	P40020

PARTS FOR PUMPS WITH 1 1/4" SEAL (Determine Pump Seal Size from Motor Selection Chart Below)

4	Impeller (State Diameter)	P85578	NOT OFFERED	P85578
	Impeller Capscrew	P52350		P52350
3	Impeller Lockwasher	J23874		J23874
9	Impeller Key	P49369		P49369
8	Water Slinger	P53550		P53550
12	Seal – Std. ¹	186862LF		186861LF
12	Seal – Opt. ²	P75423		P75423
7	Shaft Sleeve	185024LF		185024LF
5	Motor Bracket - Motor Frame 184JM	P62882		P62882
6	Motor Bracket Capscrew (4) for above	P40020		P40020
5	Motor Bracket - Motor Frames 213JM-215JM	P62886	P62886	
6	Motor Bracket Capscrew (4) for above	K03600	K03600	

¹Buna/Carbon/Ceramic ²EPR/SiC/SiC

	– Factory recommended spare parts.
--	------------------------------------

MOTOR SELECTION CHART

HP	1 PHASE 1800 RPM	3 PHASE 1800 RPM	SEAL SHAFT DIA.	1 PHASE 3600 RPM	3 PHASE 3600 RPM	SEAL SHAFT DIA.
3/4 HP	169206	169207	3/4"	–	–	–
1 HP	169208	169209	3/4"	–	–	–
1 1/2 HP	169210	169210	3/4"	–	–	–
2 HP	–	169212	3/4"	–	–	–
3 HP	–	–	–	–	169219	3/4"
5 HP	–	–	–	–	169220	3/4"
7 1/2 HP	–	–	–	–	188131+	1 1/4"
10 HP	–	–	–	–	188152++	1 1/4"
15 HP	–	–	–	–	188172*	1 1/4"

+ For 200V only use 188133

++ For 200V only use 188153

*For 200V only use 188173



**FOR MORE INFORMATION, CONSULT YOUR LOCAL
ITT BELL & GOSSETT REPRESENTATIVE**

