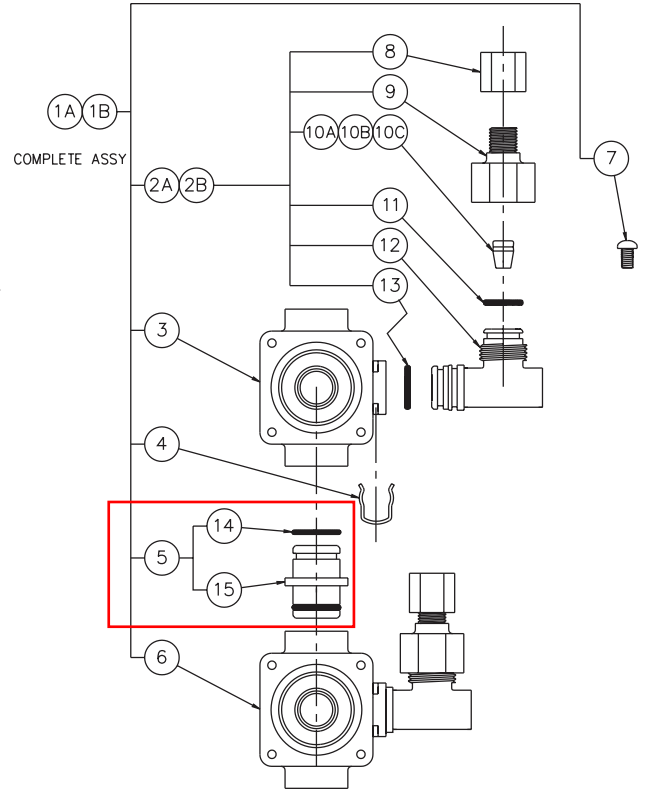


REPAIRS FOR ACORN

Single Temp Air-Control Dual Fixture Valve Body Assembly

April 1994 - Present

ITEM NO.	CAT. NO.	REF. NO.	DESCRIPTION
1A	—	2590-206-001	Single Temp Valve Body 0.5 GPM - Lavatory
1B	—	2590-207-001	Single Temp Valve Body 2.5 GPM - Shower
2A	76373	2570-045-001	Single Temp Tee Assembly 0.5 GPM - Lavatory
2B	—	2570-046-001	Single Temp Tee Assembly 2.5 GPM - Shower
3	75315	2570-027-000	L.H. Valve Body - Upper
4	75319	0326-100-000	Retaining Clip
5	77150	2570-028-001	Male to Male O-Ring Coupler Assembly
6	75322	2570-025-000	Valve Body - Lower
7	77099	0124-010-001	#10-32 x 1/2" SS Screw (10 Pack)
8	75318	1895-451-000	1/4" Ferrule Nut
9	76372	2570-042-000	Flow Control Adapter
10A	97642	0469-005-000	Flow Control 0.5 GPM - Lavatory
10B	97723	0426-025-000	Flow Control 2.5 GPM - Shower
10C	77111	0469-007-000	Flow Control 0.7 GPM - Drinking Fountain
11	97779	0401-014-000	O-Ring
12	77153	2570-045-000	Single Temp Tee Body
13	97765	0401-015-000	O-Ring
14	75309	0401-016-000	O-Ring
15	—	2570-028-000	Male x Male O-Ring Coupler



REPAIRS FOR ACORN

Hot & Cold Air-Control Dual Fixture Valve Body Assembly

April 1994 - Present

ITEM NO.	CAT. NO.	REF. NO.	DESCRIPTION
1A	—	2590-204-001	H&C Valve Body Complete 0.5 GPM
1B	—	2590-205-001	H&C Valve Body Complete 2.5 GPM
2	75322	2570-025-000	Valve Body - Lower
3	75314	2570-026-000	R.H. Valve Body - Upper
4	75315	2570-027-000	L.H. Valve Body - Upper
5A	75316	2570-040-001	H&C Mixing Tee Assembly 0.5 GPM
5B	—	2570-043-001	H&C Mixing Tee Assembly 2.5 GPM
6	76374	2570-041-000	Dual Temp Tee Body
7	97779	0401-014-000	O-Ring
8A	97642	0469-005-000	Flow Control 0.5 GPM
8B	97723	0469-025-000	Flow Control 2.5 GPM
9	76372	2570-042-000	Flow Control Adapter
10	75318	1895-451-000	1/4" Ferrule Nut
11	75319	0326-100-000	Retaining Clip
12	97765	0401-015-000	O-Ring
13	77150	2570-028-001	Male x Male O-Ring Coupler Assy.
14	75309	0401-016-000	O-Ring
15	—	2570-028-000	Male to Male O-Ring Connector
16	77099	0124-010-001	#10-32 x 1/2" SS Screw (10 Pack)

