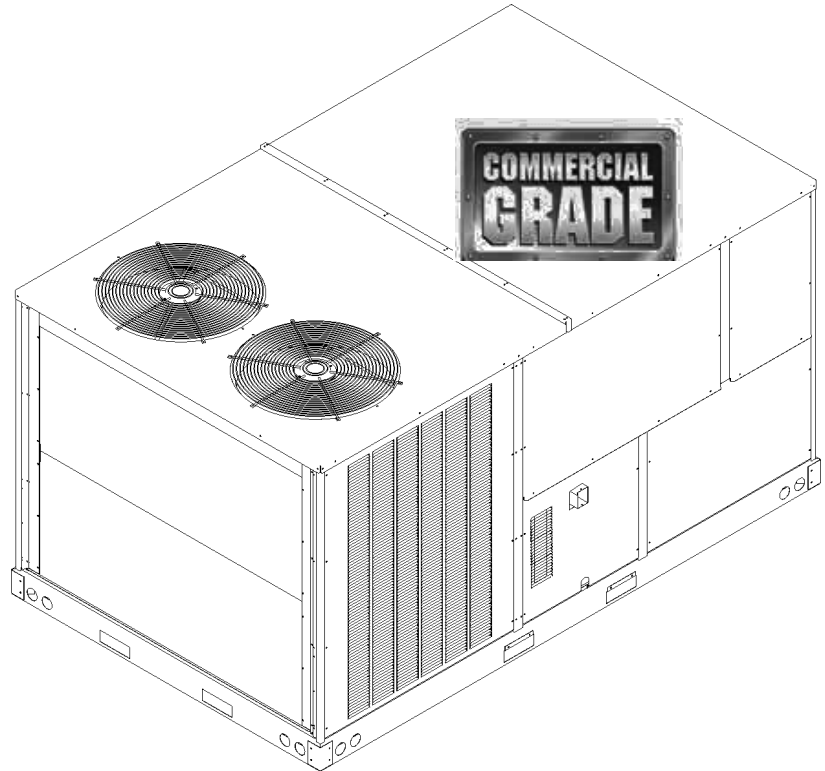


**Commercial 7.5 Ton Package Gas Unit**

DCG0902107BJXAAA  
DCG0902103BAXAAA  
DCG0902103BAXAAB  
DCG0902103BAXXAA  
DCG0902103BAXXAB  
DCG0902103BHAXAA  
DCG0902103BHXAAB  
DCG0902103BHXBAA  
DCG0902103BHXBAB  
DCG0902103BHXXAA  
DCG0902103BHXXAB  
DCG0902103BJXNAB  
DCG0902103BXXHAA  
DCG0902103BXXHAB  
DCG0902103BXXNAA  
DCG0902103BXXXAA  
DCG0902103BXXXAB  
DCG0902104BJXGAB  
DCG0902104BJXGAC  
DCG0902104BJXNAB  
DCG0902104BJXNAC  
DCG0902104BXXMAB  
DCG0902104BXXXAA  
DCG0902104BXXXAB  
DCG0902104BXXXAC  
DCG0902107BJXAAB  
DCG0902107BXSXAA  
DCG0902107BXSXAB  
DCG0902107BXXXAA  
DCG0902107BXXXAB



This manual is to be used by qualified technicians only.

This manual replaces RP-D1007B.

# Important Information

---

## Index

Functional Parts List .....	3
Illustration and Parts .....	4 - 19

*Views shown are for parts illustrations only, not servicing procedures*

Rev C: Condenser motor change to 575V model and coil standardization on 7.5 ton models

### Text Codes:

AR - As Required

NA - Not Available

NS - Not Shown

00000000 - See Note

QTY - Quantity Example (QTY 3) (If Quantity not shown, Quantity = 1)

M - Model Example (M1) (If M Code not shown, then part is used on all Models)

### Expanded Model Nomenclature:

Example M1 - Model#1 M2 - Model#2 M3 - Model#3
---

Daikin Company, L.P. is not responsible for personal injury or property damage resulting from improper service. Review all service information before beginning repairs.

Warranty service must be performed by an authorized technician, using authorized factory parts. If service is required after the warranty expires, Daikin Company, L.P. also recommends contacting an authorized technician and using authorized factory parts.

Daikin Company, L.P. reserves the right to discontinue, or change at any time, specifications or designs without notice or without incurring obligations.

For assistance within the U.S.A. contact:

Consumer Affairs Department  
Daikin North America, LLC  
7401 Security Way  
Houston, Texas 77040  
855-770-5678-Telephone  
713-863-2382-Facsimile

For assistance outside the U.S.A. contact:

International Division  
Daikin North America, LLC  
7401 Security Way  
Houston, Texas 77040  
713-861-2500-Telephone  
713-863-2382-Facsimile

# Functional Parts

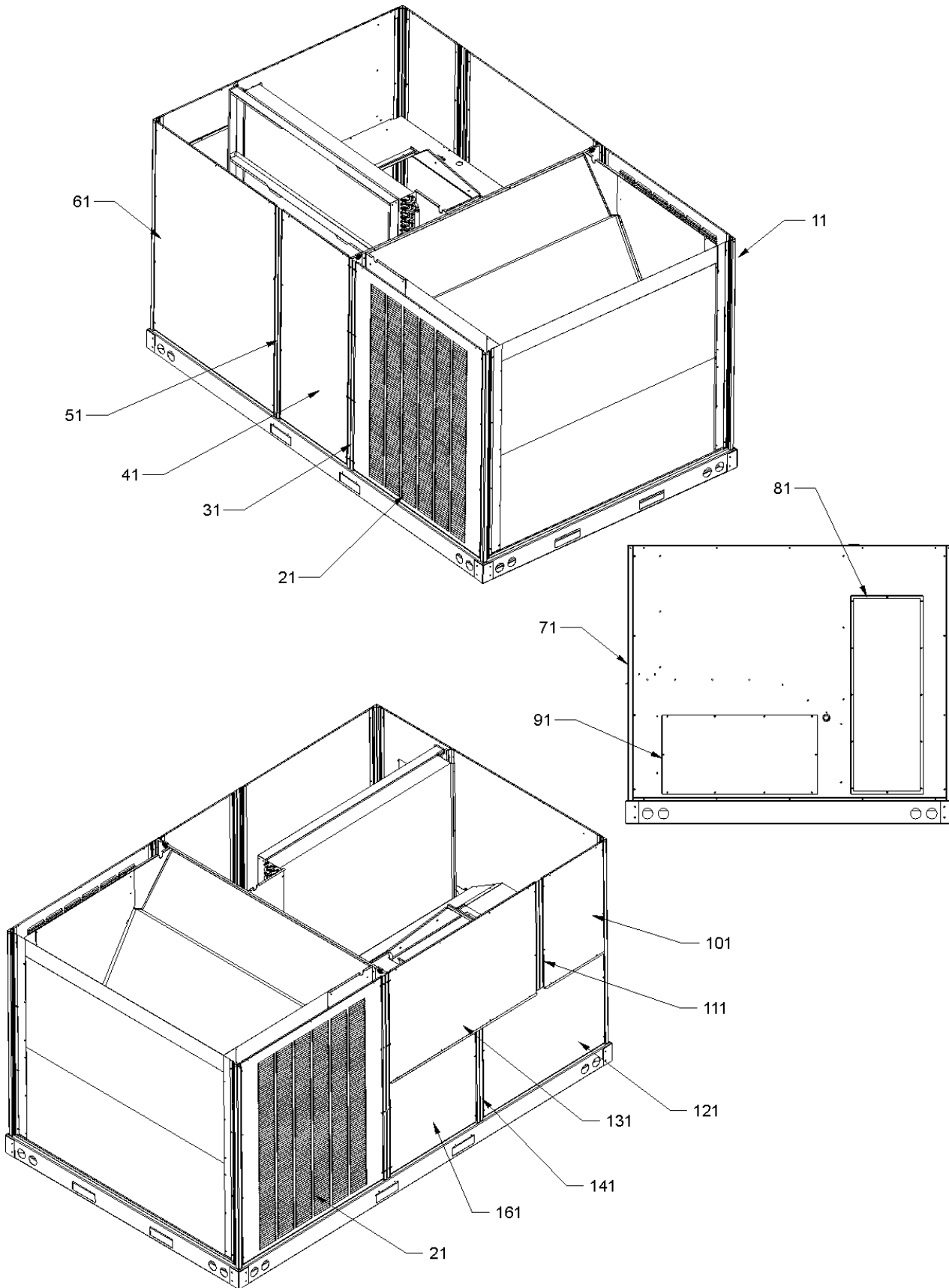
**Part No:**            **Description:**

0130M00025	24V RELAY (QTY 3)
B3240007	BELT DRIVE MOTOR 1.5 HP (M1, M2, M3, M4, M5, M6, M7, M8, M9, M10, M11, M12, M13, M14, M15, M16, M17, M18, M19, M20, M21, M22, M23, M24)
0131L00004	BELT DRIVE MOTOR-1.5 HP 575 (M25, M26, M27, M28, M29, M30)
03-77429	BLOWER WHEEL
CAP050000370VAP	CAP, 5 MFD/370V/OVAL (M1, M2, M3, M4, M5, M6, M7, M8, M9, M10, M11, M12, M13, M14, M15, M16, M22, M25, M27, M29)
CAP075000370VAP	CAP, 7.5 MFD/370V/OVAL (M17, M18, M19, M20, M21, M23, M24)
CAP030000440LA	CAPACITOR (M26, M28, M30)
ZP39K5ETF5130	COMPRESSOR 39000, 200/230/60/3 (M1, M2, M3, M4, M5, M6, M7, M8, M9, M10, M11, M12, M13, M14, M15, M16)
ZP39K5ETFD130	COMPRESSOR 39000, 460/60/3 (M17, M18, M19, M20, M21, M22, M23, M24)
ZP39K5ETFE130	COMPRESSOR 39000, 575/60/3 (M25, M26, M27, M28, M29, M30)
B13400269	COND MOTOR 380/460 50/60 CYCLE (M22)
0131M00098	COND MOTOR 575V (M25, M27, M29)
0131M00429	COND MOTOR, 1/4 HP, 1 SP, 6 PL (M1, M2, M3, M4, M5, M6, M7, M8, M9, M10, M11, M12, M13, M14, M15, M16)
0131M00432	COND MOTOR, 380/460 50/60 CYCLE (M17, M18, M19, M20, M21, M23, M24)
CONT3P025024V	CONTACTOR 25 AMP, 3P, 24V (QTY 3)
0130M00030	CUT-OUT SWITCH, HIGH PRESSURE
0130M00031	CUT-OUT SWITCH, HIGH PRESSURE
0130L00003	CUT-OUT SWITCH, LOW PRESSURE
0130L00002	CUT-OUT SWITCH, LOW PRESSURE
0150G00001	FAN BLADE (QTY 2)
0130F00010	FLAME SENSOR
0151L00000	GAS VALVE (36H)
PCBAG123	IGNITION BOARD, DSI INTEGRATED
20261709	IGNITOR
10123532	MANUAL RESET LIMIT 350°F
0131M00431	MOTOR, COND, 575 V (M26, M28, M30)
0164L00000	NOTCHED FAN BELT AX51
11112501	PRESSURE SWITCH
0130F00036	PRIMARY LIMIT - PINK
B1370199	PRIMARY LIMIT SWITCH 190°F
0130M00038	TERMINAL STRIP
0130M00144	TRANSFORMER (M1, M2, M3, M4, M5, M6, M7, M8, M9, M10, M11, M12, M13, M14, M15, M16)
0130M00145	TRANSFORMER, 150VA, 460V TO 23 (M17, M18, M19, M20, M21, M22, M23, M24)
0130M00148	Transformer, 75VA, 575V to 24V (M25, M26, M27, M28, M29, M30)
0130M00146	TRANSFORMER,150VA,480V TO 230V (M17, M18, M19, M20, M21, M22, M23, M24)
0130M00147	Transformer,150VA,575V to 230V (M25, M26, M27, M28, M29, M30)
0131L00002	VENT MOTOR

## Expanded Model Nomenclature

M1 - DCG0902103BAXAAA
M2 - DCG0902103BAXAAB
M3 - DCG0902103BAXXAA
M4 - DCG0902103BAXXAB
M5 - DCG0902103BHAXAA
M6 - DCG0902103BHAXAB
M7 - DCG0902103BHXBAA
M8 - DCG0902103BHXBAB
M9 - DCG0902103BHXXAA
M10 - DCG0902103BHXXAB
M11 - DCG0902103BJXNAB
M12 - DCG0902103BXXHAA
M13 - DCG0902103BXXHAB
M14 - DCG0902103BXXNAA
M15 - DCG0902103BXXXAA
M16 - DCG0902103BXXXAB
M17 - DCG0902104BJXGAB
M18 - DCG0902104BJXGAC
M19 - DCG0902104BJXNAB
M20 - DCG0902104BJXNAC
M21 - DCG0902104BXXMAB
M22 - DCG0902104BXXXAA
M23 - DCG0902104BXXXAB
M24 - DCG0902104BXXXAC
M25 - DCG0902107BJXAAA
M26 - DCG0902107BJXAAB
M27 - DCG0902107BXSXAA
M28 - DCG0902107BXSXAB
M29 - DCG0902107BXXXAA
M30 - DCG0902107BXXXAB

# Cabinet Assy



# Cabinet Assy

Ref. Part No: No:	Description:	Ref. Part No: No:	Description:
-------------------	--------------	-------------------	--------------

**Image 1:**

11	0121L00065RFNG	CORNER POST (QTY 4)
21	0121L00511NG	LOUVERED SIDE PANEL (QTY 2)
31	0121L00738RFNG	SIDE POST (QTY 2)
41	0121L00767NG	FILTER DOOR
51	0121L00739RFNG	FILTER DOOR POST
61	0121L00510NG	ECONOMIZER DOOR
71	0121L01000NG	DUCT PANEL
81	0121L00082NG	RETURN DUCT
91	0121L00099NG	SUPPLY DUCT
101	0121L00974NG	CONTROL DOOR
111	0121L00762RFNG	CONTROL BOX POST
121	0121L00767NG	HEAT EXCHANGE DOOR
131	0121L00763NG	BLOWER DOOR
141	0121L00765RFNG	BURNER BOX POST
161	0121L00766NG	BURNER DOOR
NS	0121L00129	DOOR RAIN SHIELD
NS	0164L00009	GASKET-RUBBER, CPOST (QTY 3)
NS	0164L00011	GASKET-RUBBER, SIDE POST (QTY 4)

**Expanded Model Nomenclature**

- M1 - DCG0902103BAXAAA
- M2 - DCG0902103BAXAAB
- M3 - DCG0902103BAXXAA
- M4 - DCG0902103BAXXAB
- M5 - DCG0902103BHAXAA
- M6 - DCG0902103BHAXAB
- M7 - DCG0902103BHXBAA
- M8 - DCG0902103BHXBAB
- M9 - DCG0902103BHXXAA
- M10 - DCG0902103BHXXAB
- M11 - DCG0902103BJXNAB
- M12 - DCG0902103BXXHAA
- M13 - DCG0902103BXXHAB
- M14 - DCG0902103BXXNAA
- M15 - DCG0902103BXXXAA
- M16 - DCG0902103BXXXAB
- M17 - DCG0902104BJXGAB
- M18 - DCG0902104BJXGAC
- M19 - DCG0902104BJXNAB
- M20 - DCG0902104BJXNAC
- M21 - DCG0902104BXXMAB
- M22 - DCG0902104BXXXAA
- M23 - DCG0902104BXXXAB
- M24 - DCG0902104BXXXAC
- M25 - DCG0902107BJXAAA
- M26 - DCG0902107BJXAAB
- M27 - DCG0902107BXSXAA
- M28 - DCG0902107BXSXAB
- M29 - DCG0902107BXXXAA
- M30 - DCG0902107BXXXAB

# Top Panel/Tubing Assy

Image 1

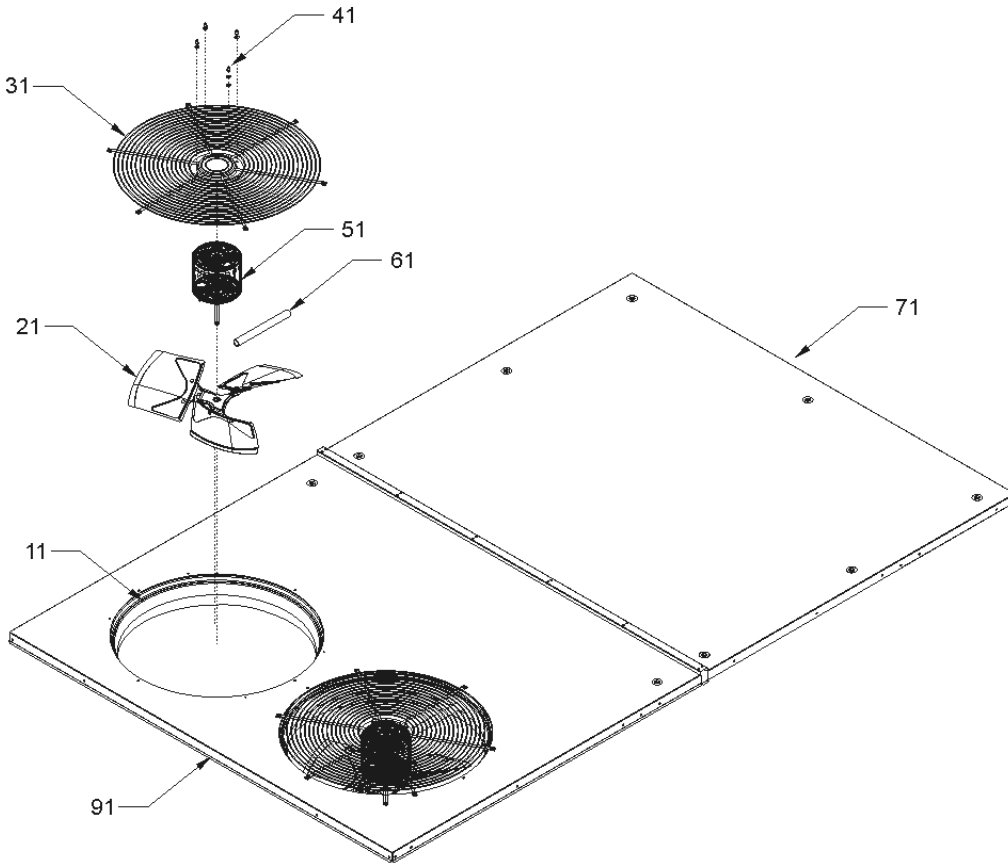
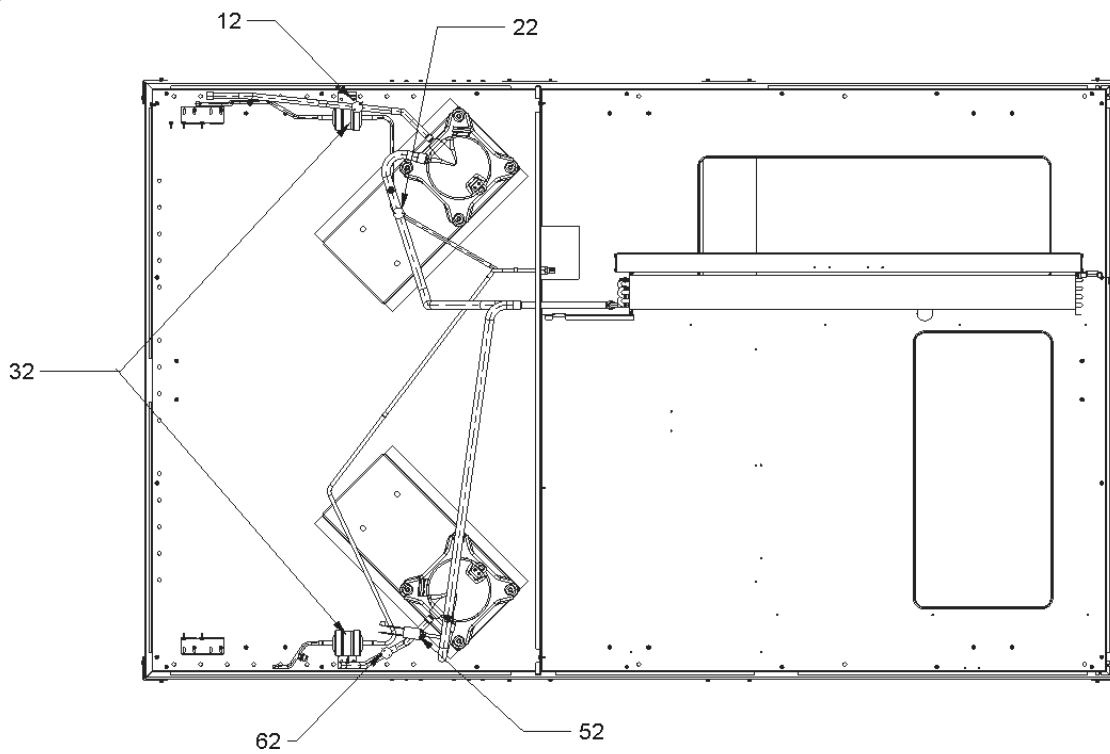


Image 2



# Top Panel/Tubing Assy

**Ref. Part  
No: No:**

**Description:**

**Ref. Part  
No: No:**

**Description:**

**Image 1:**

11	0161L00000	VENTURI RING 22" (QTY 2)
21	0150G00001	FAN BLADE (QTY 2)
31	0152G00002	FAN GRILLE (QTY 2)
41	0163M00006P	ACORN NUT 5/16 HEX BLACK (QTY 8)
51	B13400269	COND MOTOR 380/460 50/60 CYCLE (M22)
51	0131M00098	COND MOTOR 575V (M25, M27, M29)
51	0131M00429	COND MOTOR, 1/4 HP, 1 SP, 6 PL (M1, M2, M3, M4, M5, M6, M7, M8, M9, M10, M11, M12, M13, M14, M15, M16)
51	0131M00432	COND MOTOR, 380/460 50/60 CYCLE (M17, M18, M19, M20, M21, M23, M24)
51	0131M00431	MOTOR, COND, 575 V (M26, M28, M30)
61	17788000083F	PVC CONDUIT 8.25" (QTY 2)
71	0121L00497NG	EVAP TOP PANEL
91	0121L01105NG	COND TOP PANEL
NS	B1373315	ACCESS FITTING (QTY 4)
NS	0163M00175	CAP WITH O-RING (QTY 4)
NS	0259L00025	COND MOTOR HARNESS 230V (M1, M2, M3, M4, M5, M6, M7, M8, M9, M10, M11, M12, M13, M14, M15, M16, M25, M26, M27, M28, M29, M30)
NS	0259L00027	COND MOTOR HARNESS 230V (M1, M2, M3, M4, M5, M6, M7, M8, M9, M10, M11, M12, M13, M14, M15, M16, M25, M26, M27, M28, M29, M30)
NS	0259L00026	COND MOTOR HARNESS 460V (M17, M18, M19, M20, M21, M22, M23, M24)
NS	0259L00028	COND MOTOR HARNESS 460V (M17, M18, M19, M20, M21, M22, M23, M24)
NS	0259L00008	MOTOR HARNESS-BELT DRIVE
NS	20455902	SPLICE GASKET .50 X .25 (QTY 5)

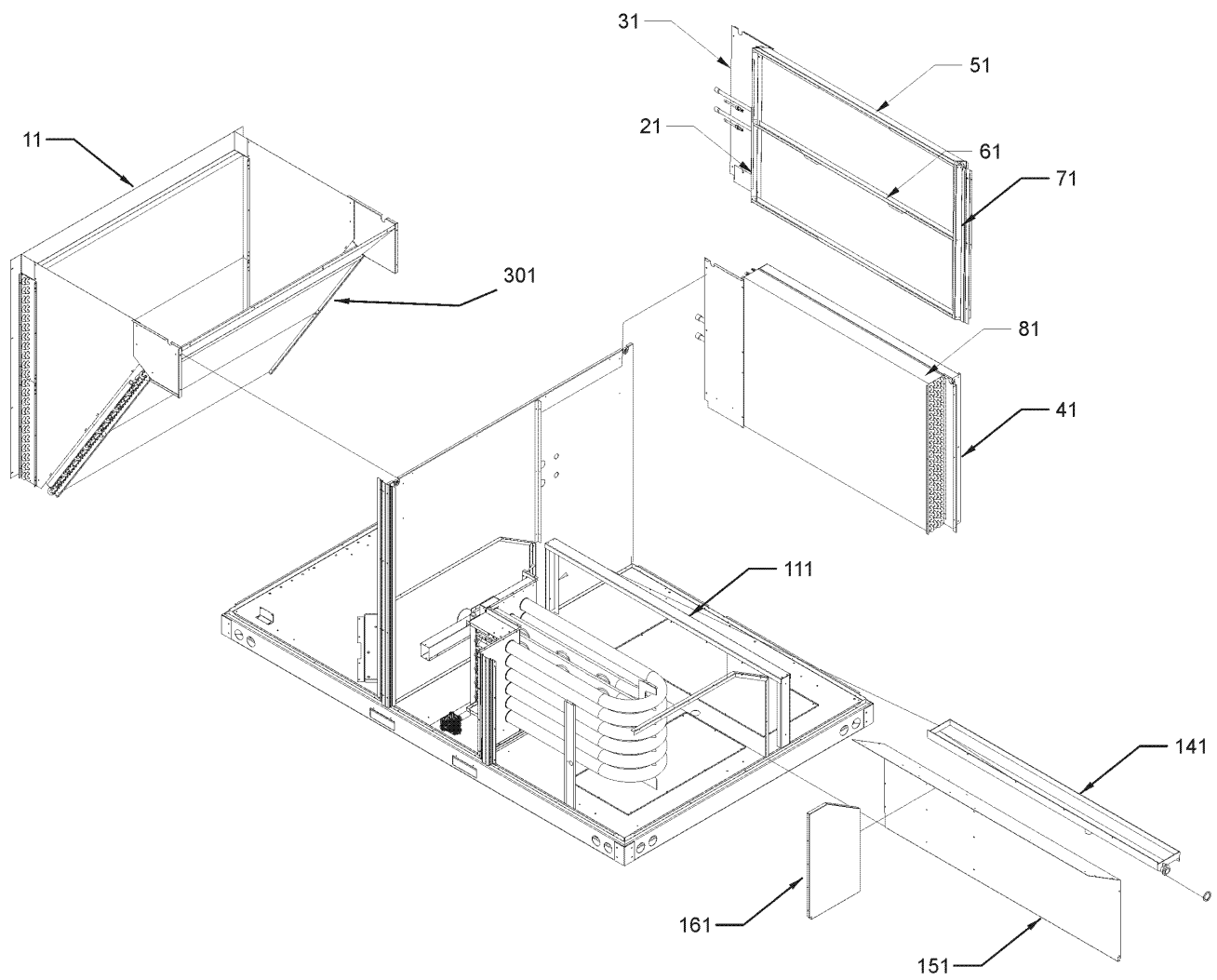
**Image 2:**

12	0130M00030	CUT-OUT SWITCH, HIGH PRESSURE
22	0130L00003	CUT-OUT SWITCH, LOW PRESSURE
32	20485201	BI-FLOW FILTER DRIER
52	0130L00002	CUT-OUT SWITCH, LOW PRESSURE
62	0130M00031	CUT-OUT SWITCH, HIGH PRESSURE

**Expanded Model Nomenclature**

M1 - DCG0902103BAXAAA
M2 - DCG0902103BAXAAB
M3 - DCG0902103BAXXAA
M4 - DCG0902103BAXXAB
M5 - DCG0902103BHXAAA
M6 - DCG0902103BHXAAAB
M7 - DCG0902103BHXBAA
M8 - DCG0902103BHXBAB
M9 - DCG0902103BHXXAA
M10 - DCG0902103BHXXAB
M11 - DCG0902103BJXNAB
M12 - DCG0902103BXXHAA
M13 - DCG0902103BXXHAB
M14 - DCG0902103BXXNAA
M15 - DCG0902103BXXXAA
M16 - DCG0902103BXXXAB
M17 - DCG0902104BJXGAB
M18 - DCG0902104BJXGAC
M19 - DCG0902104BJXNAB
M20 - DCG0902104BJXNAC
M21 - DCG0902104BXXMAB
M22 - DCG0902104BXXXAA
M23 - DCG0902104BXXXAB
M24 - DCG0902104BXXXAC
M25 - DCG0902107BJXAAA
M26 - DCG0902107BJXAAB
M27 - DCG0902107BXSXAA
M28 - DCG0902107BXSXAB
M29 - DCG0902107BXXXAA
M30 - DCG0902107BXXXAB

# Partition Assy

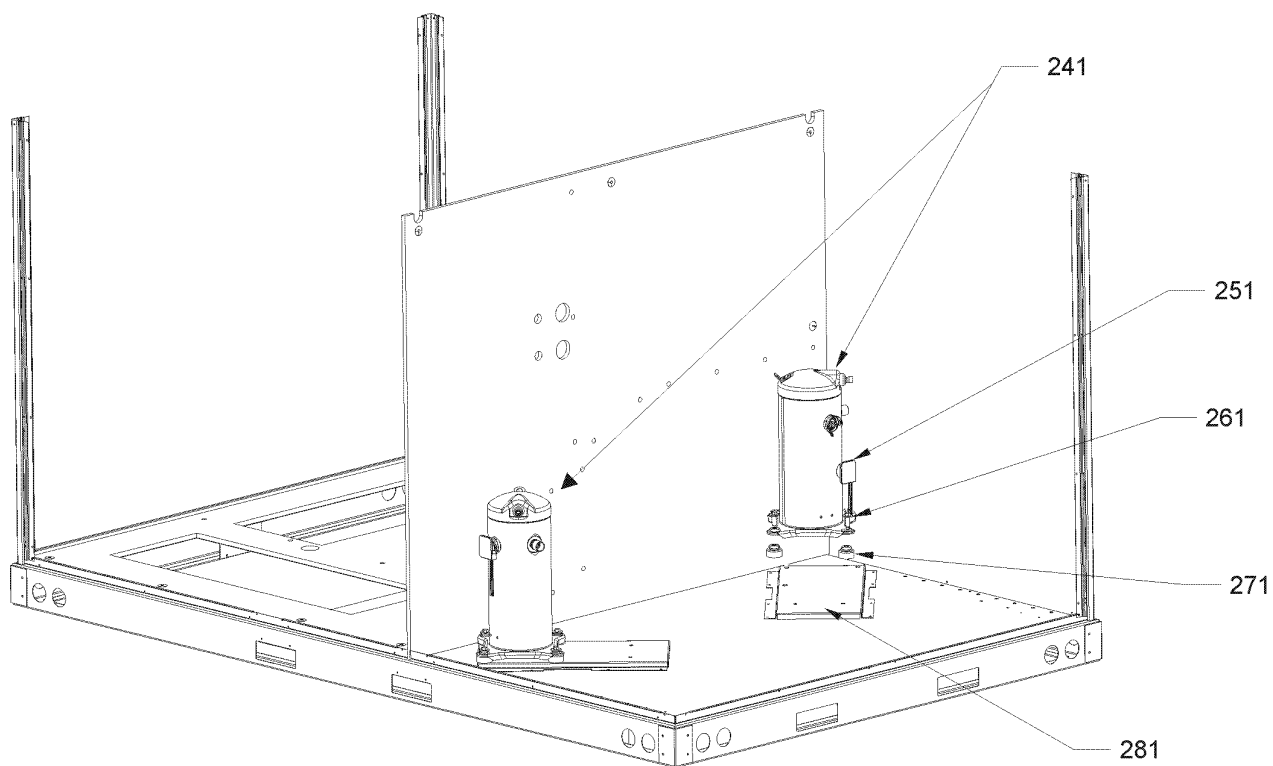
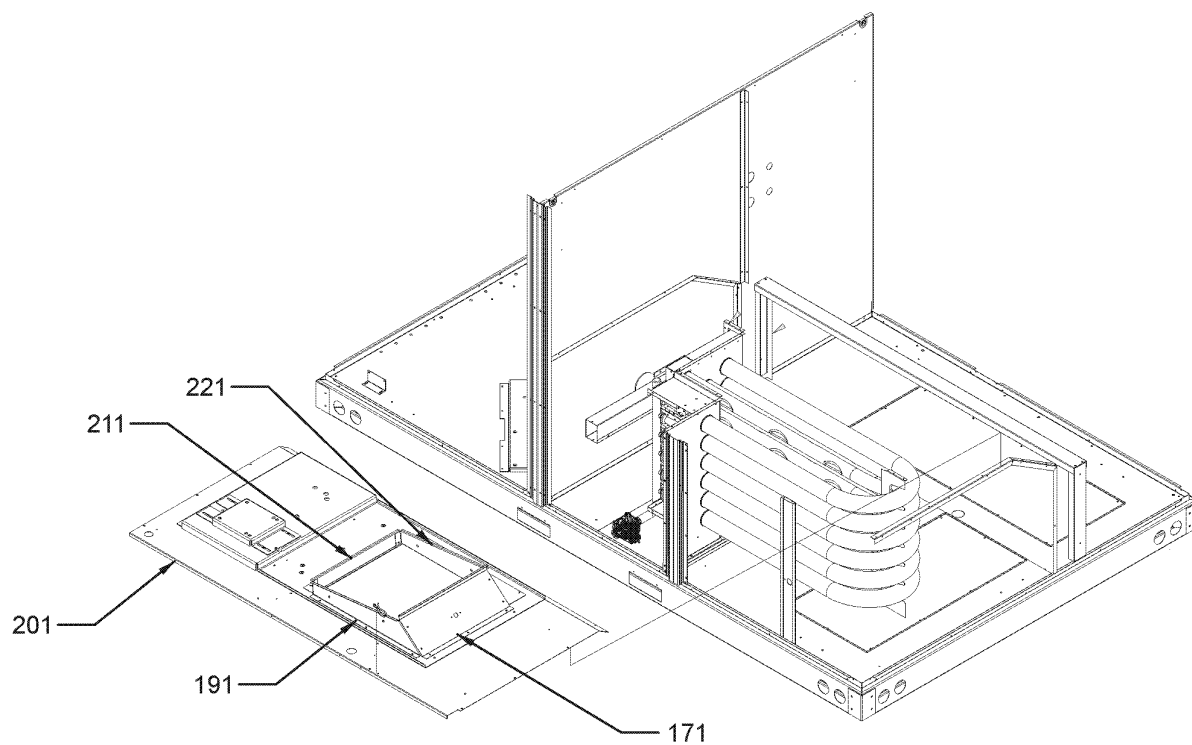




# Partition Assy

Ref. Part No: No:	Description:	Ref. Part No: No:	Description:
<i>Image 1:</i>		<b>Expanded Model Nomenclature</b>	
11	0201L00209	COND COIL ASSY, 5MM (M2, M4, M6, M8, M10, M11, M13, M16, M18, M20, M24, M26, M28, M30)	M1 - DCG0902103BAXAAA
11	0201L00128	CONDENSER COIL ASSY, 5MM (M1, M3, M5, M7, M9, M12, M14, M15, M17, M19, M21, M22, M23, M25, M27, M29)	M2 - DCG0902103BAXAAB
21	0121L00357	FILTER ANGLE-VERTICAL (RETURN SIDE)	M3 - DCG0902103BAXXAA
31	0121L00210	EVAP EXTENSION-RETURN SIDE	M4 - DCG0902103BAXXAB
41	0121L00844	EVAP EXTENSION-HAIRPIN SIDE	M5 - DCG0902103BHXAAA
51	0121L00932	FILTER ANGLE - HORIZONTAL (QTY 2)	M6 - DCG0902103BHXAAAB
61	0121L00298	FILTER ANGLE-HORIZONTAL (CENTER)	M7 - DCG0902103BHXBAA
71	0121L00358	FILTER ANGLE-VERTICAL (HAIRPIN SIDE)	M8 - DCG0902103BHXBAB
81	0202L00066	EVAP COIL TUBING ASSY (M1, M3, M5, M7, M9, M12, M14, M15, M17, M19, M21, M22, M23, M25, M27, M29)	M9 - DCG0902103BHXXAA
81	0202L00091	EVAP COIL TUBING ASSY (M2, M4, M6, M8, M10, M11, M13, M16, M18, M20, M24, M26, M28, M30)	M10 - DCG0902103BHXXAB
111	0121L00508	DRAIN PAN SUPPORT	M11 - DCG0902103BJXNAB
141	0161L00002	DRAIN PAN	M12 - DCG0902103BXXHAA
151	0121L00374	DECK SIDE CHANNEL	M13 - DCG0902103BXXHAB
161	0121L00522	HEAT EXCHANGER BLOCK-OFF	M14 - DCG0902103BXXNAA
301	0201L00210	COND COIL ASSY, 5MM (M2, M4, M6, M8, M10, M11, M13, M16, M18, M20, M24, M26, M28, M30)	M15 - DCG0902103BXXXAA
301	0201L00129	CONDENSER COIL ASSY, 5MM (M1, M3, M5, M7, M9, M12, M14, M15, M17, M19, M21, M22, M23, M25, M27, M29)	M16 - DCG0902103BXXXAB
			M17 - DCG0902104BJXGAB
			M18 - DCG0902104BJXGAC
			M19 - DCG0902104BJXNAB
			M20 - DCG0902104BJXNAC
			M21 - DCG0902104BXXMAB
			M22 - DCG0902104BXXXAA
			M23 - DCG0902104BXXXAB
			M24 - DCG0902104BXXXAC
			M25 - DCG0902107BJXAAA
			M26 - DCG0902107BJXAAB
			M27 - DCG0902107BXSXAA
			M28 - DCG0902107BXSXAB
			M29 - DCG0902107BXXXAA
			M30 - DCG0902107BXXXAB

# Partition Assy



# Partition Assy

Ref. Part No: No:	Description:	Ref. Part No: No:	Description:
-------------------	--------------	-------------------	--------------

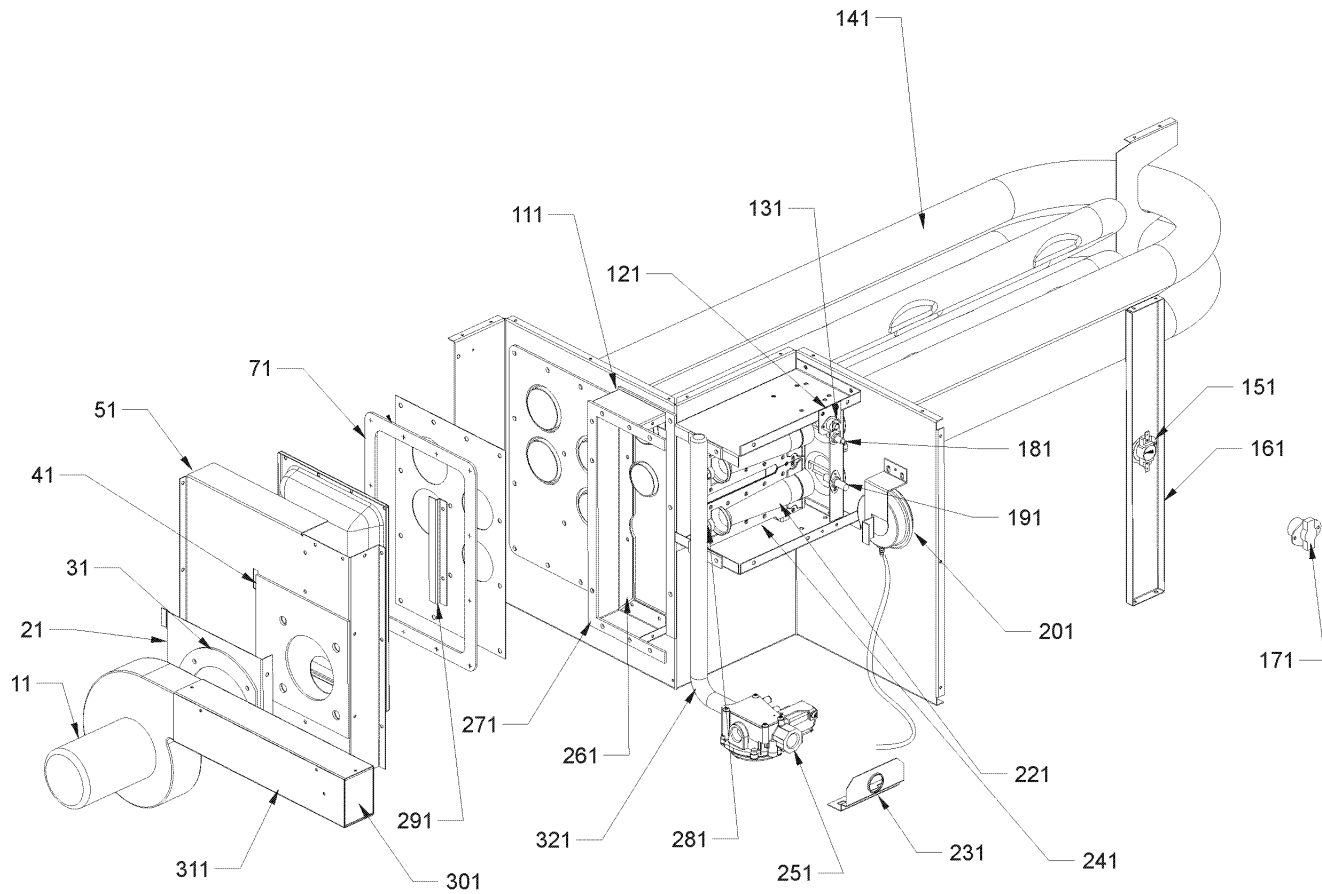
**Image 1:**

171	0121L00090	BLOWER TRANSITION, RH END
191	0121L00092	BLOWER TRANSITION, FRONT
201	0121L00975	BLOWER DECK
211	0121L00097	BLOWER TRANSITION, LH END
221	0121L00145	BLOWER TRANSITION, BACK
241	ZP39K5ETF5130	COMPRESSOR 39000, 200/230/60/3 (M1, M2, M3, M4, M5, M6, M7, M8, M9, M10, M11, M12, M13, M14, M15, M16)
241	ZP39K5ETFD130	COMPRESSOR 39000, 460/60/3 (M17, M18, M19, M20, M21, M22, M23, M24)
241	ZP39K5ETFE130	COMPRESSOR 39000, 575/60/3 (M25, M26, M27, M28, M29, M30)
251	0159L00004	COMPRESSOR SCROLL HARNESS
251	0159L00005	COMPRESSOR SCROLL HARNESS
261	M0221641	TF SHOULDER SCREW (QTY 8)
271	B1339533	COMPRESSOR GROMMET (QTY 8)
281	0121L00408	COMPRESSOR MOUNTING PLATE (QTY 2)
NS	B1369608	AIR FILTER 20 X 16 X 2 (QTY 4)

**Expanded Model Nomenclature**

- M1 - DCG0902103BAXAAA
- M2 - DCG0902103BAXAAB
- M3 - DCG0902103BAXXAA
- M4 - DCG0902103BAXXAB
- M5 - DCG0902103BHAXAA
- M6 - DCG0902103BHAXAB
- M7 - DCG0902103BHXBAA
- M8 - DCG0902103BHXBAB
- M9 - DCG0902103BHXXAA
- M10 - DCG0902103BHXXAB
- M11 - DCG0902103BJXNAB
- M12 - DCG0902103BXXHAA
- M13 - DCG0902103BXXHAB
- M14 - DCG0902103BXXNAA
- M15 - DCG0902103BXXXAA
- M16 - DCG0902103BXXXAB
- M17 - DCG0902104BJXGAB
- M18 - DCG0902104BJXGAC
- M19 - DCG0902104BJXNAB
- M20 - DCG0902104BJXNAC
- M21 - DCG0902104BXXMAB
- M22 - DCG0902104BXXXAA
- M23 - DCG0902104BXXXAB
- M24 - DCG0902104BXXXAC
- M25 - DCG0902107BJXAAA
- M26 - DCG0902107BJXAAB
- M27 - DCG0902107BXSXAA
- M28 - DCG0902107BXSXAB
- M29 - DCG0902107BXXXAA
- M30 - DCG0902107BXXXAB

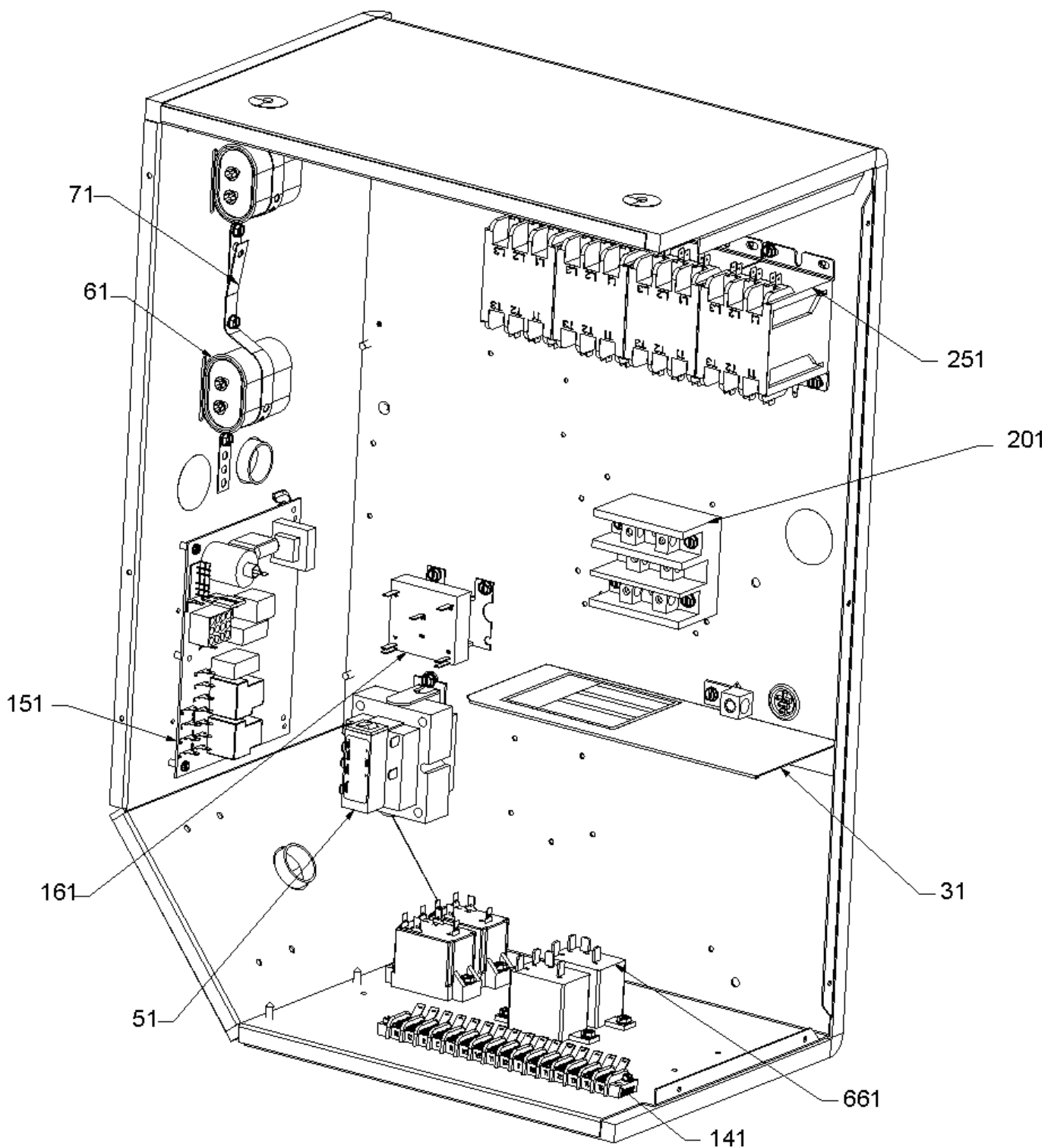
# Heat Exchanger Assy



# Heat Exchanger Assy

Ref. Part No: No:	Description:	Ref. Part No: No:	Description:
<i>Image 1:</i>		<b>Expanded Model Nomenclature</b>	
11	0131L00002 VENT MOTOR	M1	- DCG0902103BAXAAA
21	0121L00080 MOUNTING PLATE-ID BLOWER	M2	- DCG0902103BAXAAB
31	0154L00007 GASKET, BLOWER/ORIFICE PLATE	M3	- DCG0902103BAXXAA
41	0154L00006 GASKET, COLLECTOR/ORIFICE PLATE	M4	- DCG0902103BAXXAB
51	0121L00077 COLLECTOR BOX COVER	M5	- DCG0902103BHXAAA
71	0154L00010 REAR COVER GASKET, HEAT EXCHANGER	M6	- DCG0902103BHXAAAB
111	0121L00076 COLLECTOR BOX CHANNEL	M7	- DCG0902103BHXBAA
121	0121L00323 FLAME ROLLOUT BRACKET	M8	- DCG0902103BHXBAB
131	10123532 MANUAL RESET LIMIT 350°F	M9	- DCG0902103BHXXAA
141	0270L00043 HEAT EXCHANGER ASSY 6B (M1, M2, M3, M4, M5, M6, M7, M8, M9, M10, M11, M12, M13, M14, M15, M16, M17, M18, M19, M20, M21, M22, M23, M24, M25, M26, M29, M30)	M10	- DCG0902103BHXXAB
141	0270L00171 HEAT EXCHANGER ASSY 6B (M27, M28)	M11	- DCG0902103BJXNAB
151	B1370199 PRIMARY LIMIT SWITCH 190°F	M12	- DCG0902103BXXHAA
161	0121L00093 LIMIT SWITCH POST	M13	- DCG0902103BXXHAB
171	0130F00036 PRIMARY LIMIT - PINK	M14	- DCG0902103BXXNAA
181	0130F00010 FLAME SENSOR	M15	- DCG0902103BXXXAA
191	20261709 IGNITOR	M16	- DCG0902103BXXXAB
201	11112501 PRESSURE SWITCH	M17	- DCG0902104BJXGAB
221	0163L00000 BECKETT BURNER (QTY 6)	M18	- DCG0902104BJXGAC
231	0121L00147 PIPE BRACKET-GAS VALVE	M19	- DCG0902104BJXNAB
241	0121L00075 BURNER BRACKET 6B	M20	- DCG0902104BJXNAC
251	0151L00000 GAS VALVE (36H)	M21	- DCG0902104BXXMAB
261	0154L00011 INNER GASKET, COLLECTOR BOX	M22	- DCG0902104BXXXAA
271	0154L00012 OUTER GASKET, COLLECTOR BOX	M23	- DCG0902104BXXXAB
281	0163L00007 ORIFICE #34 DRILL (QTY 6)	M24	- DCG0902104BXXXAC
291	0121L00073 TUBE RESTRICTOR	M25	- DCG0902107BJXAAA
301	0163L00006 FLUE SCREEN	M26	- DCG0902107BJXAAB
311	0121L00049 HEAT EXCHANGER FLUE (QTY 2)	M27	- DCG0902107BXSXAA
321	0163L00010 MANIFOLD - 6 BRNR	M28	- DCG0902107BXSXAB
NS	0121L00130NG FLUE COLLAR	M29	- DCG0902107BXXXAA
NS	B1392609 SEAL STRIP, RED, 1/8 X 1/2 X 100 (QTY 3)	M30	- DCG0902107BXXXAB

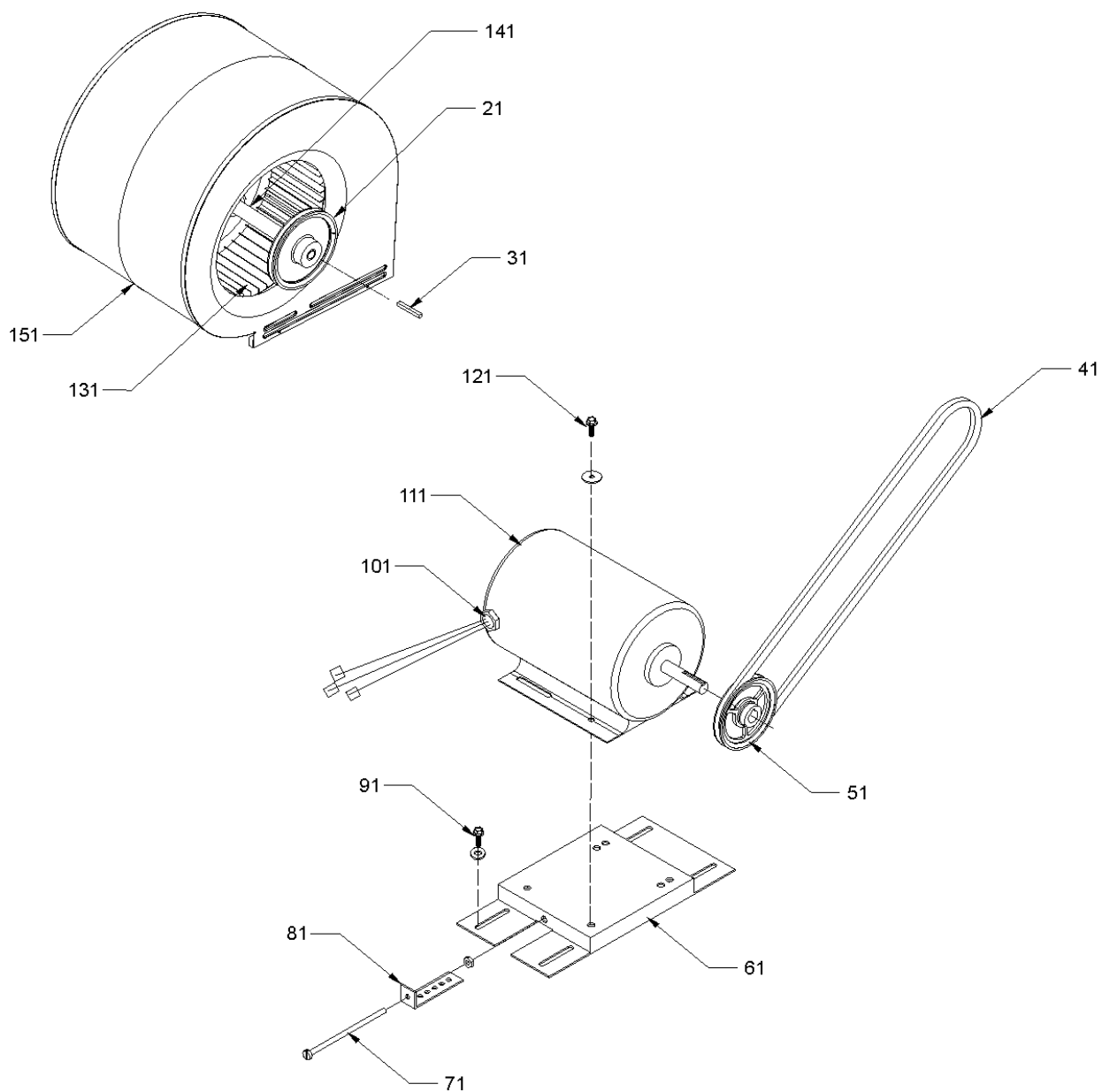
# Control Box Assy



# Control Box Assy

Ref. Part No:	Description:	Ref. Part No:	Description:
<i>Image 1:</i>		<b>Expanded Model Nomenclature</b>	
31	0121G00491 VOLTAGE BARRIER	M1	- DCG0902103BAXAAA
51	0130M00144 TRANSFORMER (M1, M2, M3, M4, M5, M6, M7, M8, M9, M10, M11, M12, M13, M14, M15, M16)	M2	- DCG0902103BAXAAB
51	0130M00145 TRANSFORMER, 150VA, 460V TO 23 (M17, M18, M19, M20, M21, M22, M23, M24)	M3	- DCG0902103BAXXAA
51	0130M00148 Transformer, 75VA, 575V to 24V (M25, M26, M27, M28, M29, M30)	M4	- DCG0902103BAXXAB
61	CAP050000370VAP CAP, 5 MFD/370V/OVAL (M1, M2, M3, M4, M5, M6, M7, M8, M9, M10, M11, M12, M13, M14, M15, M16, M22, M25, M27, M29)	M5	- DCG0902103BHXAAA
61	CAP075000370VAP CAP, 7.5 MFD/370V/OVAL (M17, M18, M19, M20, M21, M23, M24)	M6	- DCG0902103BHXAAB
61	CAP030000440LA CAPACITOR (M26, M28, M30)	M7	- DCG0902103BHXBAA
71	20520901 CAPACITOR STRAP (QTY 2)	M8	- DCG0902103BHXBAB
141	0130M00038 TERMINAL STRIP	M9	- DCG0902103BHXXAA
151	PCBAG123 IGNITION BOARD, DSI INTEGRATED	M10	- DCG0902103BHXXAB
161	0130M00025 24V RELAY	M11	- DCG0902103BJXNAB
201	16330-3 POWER BLOCK	M12	- DCG0902103BXXHAA
251	CONT3P025024V CONTACTOR 25 AMP, 3P, 24V (QTY 3)	M13	- DCG0902103BXXHAB
661	0130M00025 24V RELAY (QTY 2)	M14	- DCG0902103BXXNAA
NS	0130M00146 TRANSFORMER, 150VA, 480V TO 230V (M17, M18, M19, M20, M21, M22, M23, M24)	M15	- DCG0902103BXXXAA
NS	0130M00147 Transformer, 150VA, 575V to 230V (M25, M26, M27, M28, M29, M30)	M16	- DCG0902103BXXXAB
		M17	- DCG0902104BJXGAB
		M18	- DCG0902104BJXGAC
		M19	- DCG0902104BJXNAB
		M20	- DCG0902104BJXNAC
		M21	- DCG0902104BXXMAB
		M22	- DCG0902104BXXXAA
		M23	- DCG0902104BXXXAB
		M24	- DCG0902104BXXXAC
		M25	- DCG0902107BJXAAA
		M26	- DCG0902107BJXAAB
		M27	- DCG0902107BXSXAA
		M28	- DCG0902107BXSXAB
		M29	- DCG0902107BXXXAA
		M30	- DCG0902107BXXXAB

# Belt Drive Blower/Motor Assy





# Belt Drive Blower/Motor Assy

Ref. Part No: No:	Description:	Ref. Part No: No:	Description:
<i>Image 1:</i>		<b>Expanded Model Nomenclature</b>	
21	0163L00011	FIXED SHEAVE AK74	M1 - DCG0902103BAXAAA
31	B1398604	STEEL KEY (000158812) 2.0"	M2 - DCG0902103BAXAAB
41	0164L00000	NOTCHED FAN BELT AX51	M3 - DCG0902103BAXXAA
51	0163L00024	VARIABLE PITCH SHEAVE 1VL40 X 5/8" (M25, M26, M27, M28, M29, M30)	M4 - DCG0902103BAXXAB
51	0163L00012	VARIABLE PITCH SHEAVE VL40 (M1, M2, M3, M4, M5, M6, M7, M8, M9, M10, M11, M12, M13, M14, M15, M16, M17, M18, M19, M20, M21, M22, M23, M24)	M5 - DCG0902103BHXAAA
61	0270L00015	MOTOR BASE ASSY	M6 - DCG0902103BHXAAAB
71	0163M00045	BOLT 1/4-20 X 4"	M7 - DCG0902103BHXBAA
81	3225000F	BELT TIGHTENER ANGLE	M8 - DCG0902103BHXBAB
91	B1446707	SCREW 5/16-18 X 1" (QTY 4)	M9 - DCG0902103BHXXAA
101	B1393726	ELECT. CONNECTING BUSHING	M10 - DCG0902103BHXXAB
111	B3240007	BELT DRIVE MOTOR 1.5 HP (M1, M2, M3, M4, M5, M6, M7, M8, M9, M10, M11, M12, M13, M14, M15, M16, M17, M18, M19, M20, M21, M22, M23, M24)	M11 - DCG0902103BJXNAB
111	0131L00004	BELT DRIVE MOTOR-1.5 HP 575 (M25, M26, M27, M28, M29, M30)	M12 - DCG0902103BXXHAA
121	B1393738	BOLT 1/4-20 X 3/4" (QTY 4)	M13 - DCG0902103BXXHAB
131	03-77429	BLOWER WHEEL	M14 - DCG0902103BXXNAA
141	04-11525	BLOWER SHAFT	M15 - DCG0902103BXXXAA
151	04-01525	BLOWER HOUSING	M16 - DCG0902103BXXXAB
NS	04-02196	BLOWER BEARING & FRAME ASSY	M17 - DCG0902104BJXGAB
			M18 - DCG0902104BJXGAC
			M19 - DCG0902104BJXNAB
			M20 - DCG0902104BJXNAC
			M21 - DCG0902104BXXMAB
			M22 - DCG0902104BXXXAA
			M23 - DCG0902104BXXXAB
			M24 - DCG0902104BXXXAC
			M25 - DCG0902107BJXAAA
			M26 - DCG0902107BJXAAB
			M27 - DCG0902107BXSXAA
			M28 - DCG0902107BXSXAB
			M29 - DCG0902107BXXXAA
			M30 - DCG0902107BXXXAB

# ACCESSORY PARTS LIST

# Accessory Parts List

Ref. Part No:	No:	Description:	Ref. Part No:	No:	Description:
<b>Image 1:</b>					
NS	0130M00065	CIRCUIT BREAKER, CONVENIENCE OUTLET (M7, M8, M11, M14, M19, M20, M21)			
NS	0270L00548	CONVENIENCE OUTLET ASSEMBLY (M1, M2, M5, M6, M7, M8, M11, M12, M13, M14, M17, M18, M19, M20, M21, M25, M26)			
NS	DNE090120BF1	D'FLOW ECON-DAIKIN,7.5-10 TON (M1, M2, M3, M4, M11, M17, M18, M19, M20, M25, M26)			
NS	DSC060B53ND01FI	DISCONNECT MODULE ASSY (M9, M10)			
NS	DSC060B53YD01FI	DISCONNECT MODULE ASSY (M5, M6, M7, M8, M11, M17, M18, M19, M20, M25, M26)			
NS	SDRKT01FI75T12	SMOKE DETECTOR ASSEMBLY (M11, M14, M17, M18, M19, M20)			
NS	SDSKT01FI75T12	SMOKE DETECTOR ASSEMBLY (M12, M13)			
NS	0130M00061	TRANSFORMER, CONVENIENCE OUTLET (M7, M8, M11, M14, M19, M20, M21)			

## Expanded Model Nomenclature

M1 - DCG0902103BAXAAA
M2 - DCG0902103BAXAAB
M3 - DCG0902103BAXXAA
M4 - DCG0902103BAXXAB
M5 - DCG0902103BHAXAA
M6 - DCG0902103BHAXAB
M7 - DCG0902103BHXBAA
M8 - DCG0902103BHXBAB
M9 - DCG0902103BHXXAA
M10 - DCG0902103BHXXAB
M11 - DCG0902103BJXNAB
M12 - DCG0902103BXXHAA
M13 - DCG0902103BXXHAB
M14 - DCG0902103BXXNAA
M15 - DCG0902103BXXXAA
M16 - DCG0902103BXXXAB
M17 - DCG0902104BJXGAB
M18 - DCG0902104BJXGAC
M19 - DCG0902104BJXNAB
M20 - DCG0902104BJXNAC
M21 - DCG0902104BXXMAB
M22 - DCG0902104BXXXAA
M23 - DCG0902104BXXXAB
M24 - DCG0902104BXXXAC
M25 - DCG0902107BJXAAA
M26 - DCG0902107BJXAAB
M27 - DCG0902107BXSXAA
M28 - DCG0902107BXSXAB
M29 - DCG0902107BXXXAA
M30 - DCG0902107BXXXAB