



## RESIDENTIAL & LIGHT DUTY COMMERCIAL GAS REPLACEMENT PARTS LIST

### *The Bradford White* **DEFENDER Safety System**<sup>™</sup>



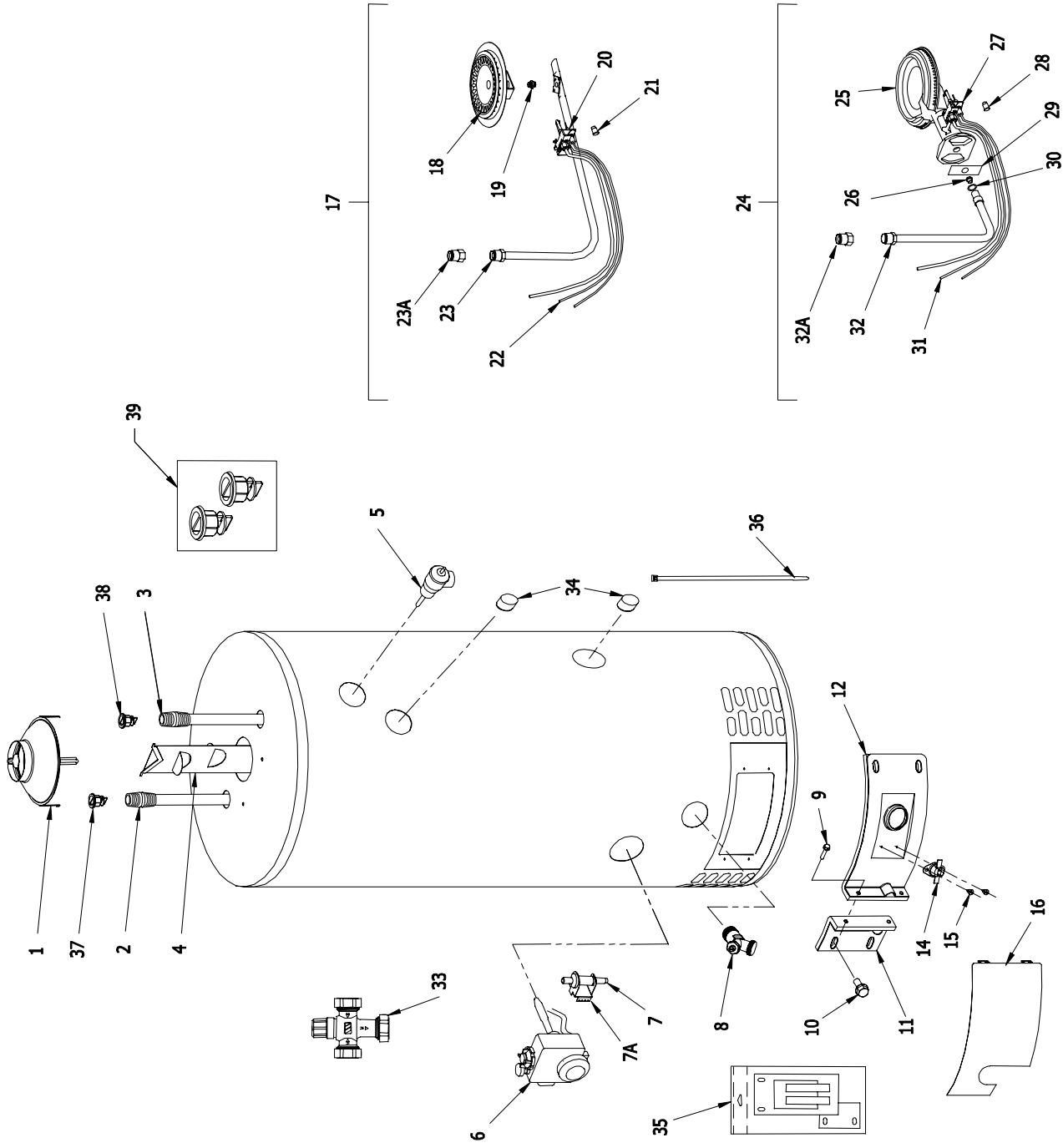
**“MI” Models  
“M(1,2)XR” Models  
“M4” Models  
&  
Light Duty 50T65**

**DEFENDER**  
SAFETY SYSTEM<sup>®</sup>

**Effective: January 1, 2007  
ECO 7225**

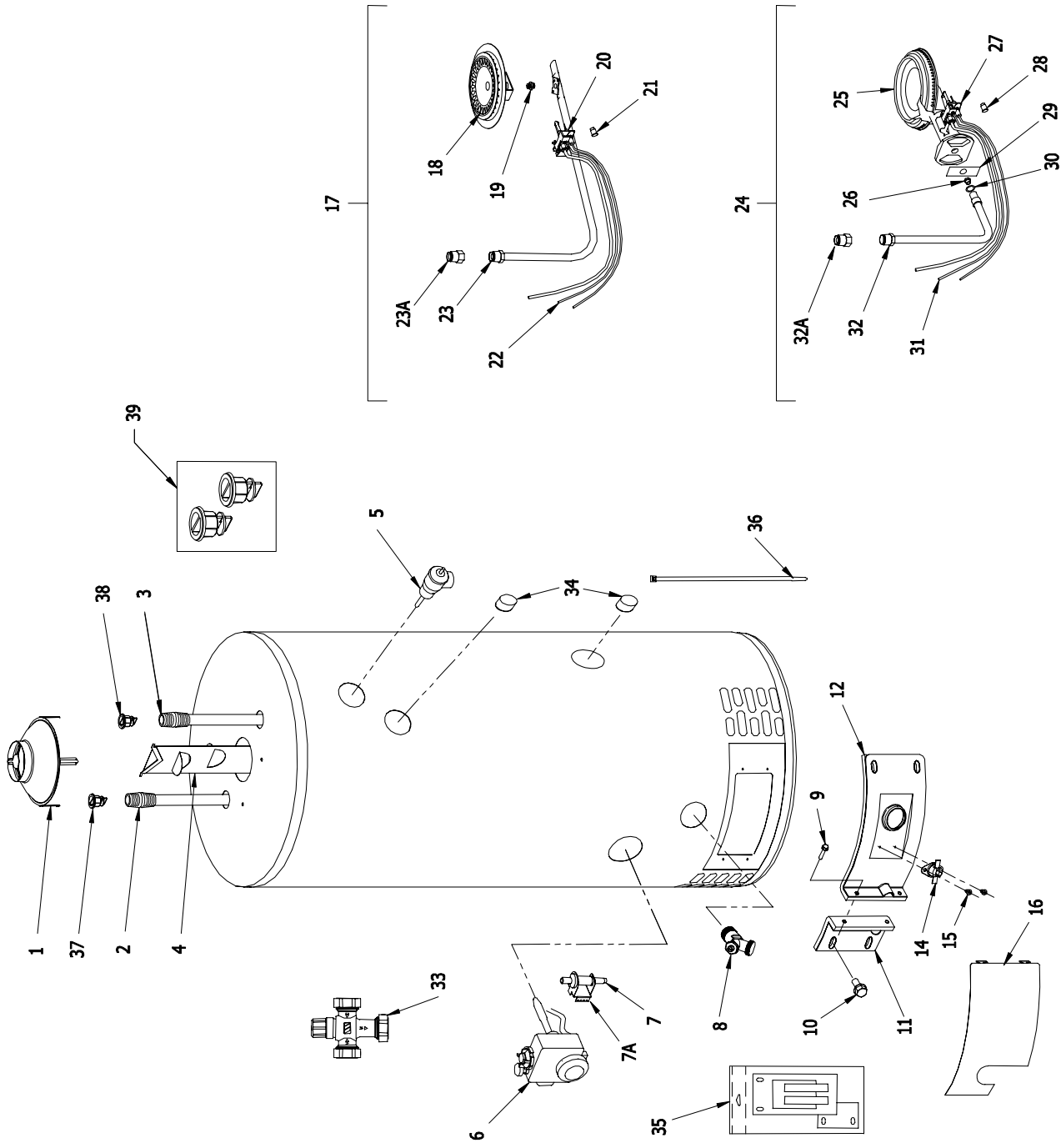
**NOTE: BOTH MODEL AND  
SERIAL NUMBERS ARE  
REQUIRED FOR ORDERING  
REPLACEMENTS PARTS.**

Specification subject to  
change without notice.



Item	Description	Model	Model	Model	Model	Model	Model	Model
		M130T*F(BN,CX)	M130S*F(BN,CX)	M1303T*F(BN,CX)	M140T*F(BN,CX)	M1403S*F(BN,CX)	M1404T*F(BN,CX)	
1	Draft Hood	243-45787-00	243-45787-00	243-45787-00	243-45787-00	243-45787-00	243-33081-02-20	
2	Hot Water Outlet Anode Magnesium▲	224-32731-95	224-32731-97	224-32731-82	224-32731-81	224-32731-81	224-32731-82	
	Aluminum▲	224-32999-24	224-32999-25	224-32999-06	224-32999-24	224-32999-31	224-32999-06	
	A420 Aluminum▲	224-45147-02	224-45147-02	224-45147-03	224-45147-02	224-45147-04	224-45147-03	
3	Cold Water Inlet Dip Tube Polypropylene▲▲	229-39625-23	229-39625-24	229-39625-07	229-39625-25	229-39625-03	229-39625-06	
	Polysulfone (NC Code)▲▲	229-39628-26	229-39628-27	229-39628-07	229-39628-28	229-39628-03	229-39628-06	
4	Flue Baffle	243-44639-00	243-45226-00	243-45224-00	243-42283-00	243-45223-00	243-45225-00	
5	T&P Relief Valve	265-32920-01	265-32920-01	265-32920-01	265-32920-01	265-32920-01	265-32920-01	
6	Nat. Gas Thermostat	265-46181-01	265-46181-01	265-46181-01	265-46181-01	265-46181-01	265-46181-01	
	LP Gas Thermostat	265-46182-01	265-46182-01	265-46182-01	265-46182-01	265-46182-01	265-46182-01	
7	Piezo Igniter	239-43448-00	239-43448-00	239-43448-00	239-43448-00	239-43448-00	239-43448-00	
7A	Piezo Bracket White Rodgers	239-46157-02	239-46157-02	239-46157-02	239-46157-02	239-46157-02	239-46157-02	
	Piezo Bracket Robertshaw	239-46157-01	239-46157-01	239-46157-01	239-46157-01	239-46157-01	239-46157-01	
8	Brass Drain Valve	265-42351-02	265-42351-02	265-42351-02	265-42351-02	265-42351-02	265-42351-02	
9	Screw-#8-18 x 3/4 HWH	239-44195-00	239-44195-00	239-44195-00	239-44195-00	239-44195-00	239-44195-00	
10	Screw-#10-12 x 3/4 HWH	239-44113-00	239-44113-00	239-44113-00	239-44113-00	239-44113-00	239-44113-00	
11	Left Side Inner Door Complete	239-43968-14	239-43968-16	239-43968-14	239-43968-16	239-43968-18	239-43968-16	
12	Nat. Gas Right Side Inner Door Complete	243-43963-02	243-43963-03	243-43963-02	243-43963-05	243-43963-07	243-43963-05	
	LP Gas Right Side Inner Door Complete	243-43963-02	243-43963-03	243-43963-01	243-43963-03	243-43963-07	243-43963-05	
14	Nat. Gas Resettable Thermal Switch	239-43676-03	239-43676-01	239-43676-03	239-43676-03	239-43676-02	239-43676-03	
	LP Gas Resettable Thermal Switch	239-43676-03	239-43676-01	239-43676-02	239-43676-01	239-43676-02	239-43676-03	
15	Screw-#6-20 x 3/8 PHCR	239-43967-00	239-43967-00	239-43967-00	239-43967-00	239-43967-00	239-43967-00	
16	Outer Door	243-43962-00	243-43962-00	243-43962-00	243-43962-00	243-43962-00	243-43962-00	
17	Nat. Gas Burner Assembly Complete***	265-43971-01-36	265-43971-02-38	265-43971-01-32	265-43971-02-32	265-43971-03-32	265-43971-02-30	
18	Nat. Gas BN Burner**	228-42506-00	228-42506-00	228-42506-00	228-42506-00	228-42506-00	228-42506-00	
19	Nat. Gas Main Burner Orifice**	234-41034-36	234-41034-38	234-41034-32	234-41034-32	234-41034-32	234-41034-30	
	Nat. Gas High Altitude 2000 Ft. to 5000 Ft.**	234-41034-39	234-41034-41	234-41034-36	234-41034-36	234-41034-36	234-41034-31	
	Nat. Gas High Altitude 5000 Ft. to 8000 Ft.**	234-41034-41	234-41034-43	234-41034-38	234-41034-38	234-41034-38	234-41034-32	
20	Nat. Gas High Altitude Over 8000 Ft.**	234-41034-43	234-41034-43	234-41034-38	234-41034-38	234-41034-38	234-41034-33	
	Nat. Gas Pilot Assembly**	233-46277-01	233-46277-02	233-46277-01	233-46277-02	233-46277-02	233-46277-02	
21	Nat. Gas Pilot Orifice**	234-46502-05	234-46502-05	234-46502-05	234-46502-05	234-46502-05	234-46502-05	
22	Thermocouple**	233-46501-15	233-46501-15	233-46501-15	233-46501-15	233-46501-15	233-46501-15	
23	Nat. Gas FeedLine**	265-43960-01	265-43960-02	265-43960-01	265-43960-02	265-43960-03	265-43960-02	
23A	Nat. Gas FeedLine Adaptor	239-60100-00	239-60100-00	239-60100-00	239-60100-00	239-60100-00	239-60100-00	
24	LP Gas Burner Assembly Complete***	265-43972-01-60	265-43972-02-54	265-43972-01-52	265-43972-02-52	265-43972-03-50	265-43972-02-47	
25	LP Gas Cast Iron Burner**	228-42080-00	228-42080-00	228-42080-00	228-42080-00	228-37743-00	228-42080-00	

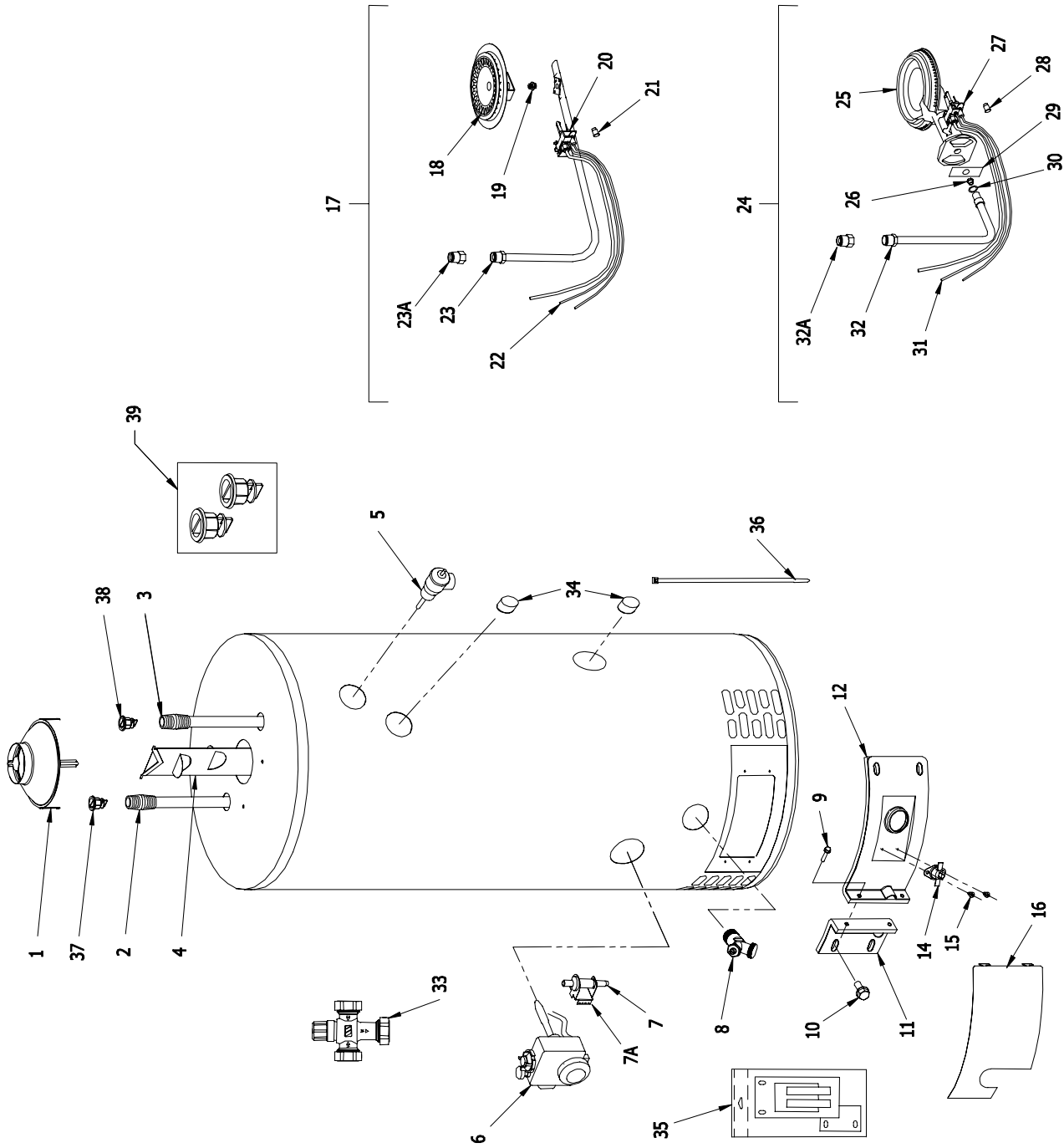
\*Applies to all warranties  
 \*\*Inner door gasket kit recommended  
 \*\*\*Ordering a complete burner assembly may increase delivery time. Please order the specific component required for the quickest delivery.  
 ▲ Order with item 36  
 ▲▲ Order with item 37



Item	Description	Model	Model	Model	Model	Model	Model	Model	Model
		MI30T*F(BN,CX)	MI30S*F(BN,CX)	MI303T*F(BN,CX)	MI40T*F(BN,CX)	MI40S*F(BN,CX)	MI404T*F(BN,CX)	MI403S*F(BN,CX)	MI404T*F(BN,CX)
26	LP Gas Main Burner Orifice**	234-35928-60	234-35928-54	234-35928-52	234-35928-52	234-35928-50	234-35928-47		
	LP Gas High Altitude 2000 Ft. to 5000 Ft.**	234-35928-54	234-35928-54	234-35928-53	234-35928-53	234-35928-51	234-35928-49		
	LP Gas High Altitude 5000 Ft. to 8000 Ft.**	234-35928-54	234-35928-54	234-35928-54	234-35928-54	234-35928-52	234-35928-50		
	LP Gas High Altitude Over 8000 Ft.**	234-35928-54	234-35928-54	234-35928-54	234-35928-54	234-35928-53	234-35928-51		
27	LP Gas Pilot Assembly**	233-46278-01	233-46278-02	233-46278-01	233-46278-02	233-46278-02	233-46278-02		
28	LP Gas Pilot Orifice**	234-46502-02	234-46502-02	234-46502-02	234-46502-02	234-46502-02	234-46502-02		
29	Air Shutter**	239-35466-00	239-35466-00	239-35466-00	239-35466-00	239-35466-00	239-35466-00		
30	Air Shutter Nut**	239-18197-00	239-18197-00	239-18197-00	239-18197-00	239-18197-00	239-18197-00		
31	Thermocouple**	233-46501-24	233-46501-24	233-46501-24	233-46501-24	233-46501-24	233-46501-24		
32	LP Gas Feed Line**	265-43961-01	265-43961-02	265-43961-01	265-43961-02	265-43961-02	265-43961-02		
32A	LP Gas Feed Line Adaptor	239-60099-00	239-60099-00	239-60099-00	239-60099-00	239-60099-00	239-60099-00		
33	ASSE Approved Mixing Valve (Optional)	239-43740-01	239-43740-01	239-43740-01	239-43740-01	239-43740-01	239-43740-01		
34	3/4 NPT Plug	---	---	---	---	---	---		
35	Inner Door Gasket Kit	239-44078-00	239-44078-00	239-44078-00	239-44078-00	239-44078-00	239-44078-00		
36	Wire Tie	239-44328-00	239-44328-00	239-44328-00	239-44328-00	239-44328-00	239-44328-00		
37	Heat Trap Insert (Outlet)	239-45167-00	239-45167-00	239-45167-00	239-45167-00	239-45167-00	239-45167-00		
38	Heat Trap Insert (Inlet)	239-45073-00	239-45073-00	239-45073-00	239-45073-00	239-45073-00	239-45073-00		
39	Kit-Heat Trap Insert	265-45420-00	265-45420-00	265-45420-00	265-45420-00	265-45420-00	265-45420-00		
-	LP to Natural Gas Conversion Kit (Norm Alt.)	265-45712-01	265-45712-02	265-45712-03	265-45712-04	265-45712-05	265-45712-06		
-	LP to Natural Gas Conversion Kit (High Alt.)	265-45712-13	265-45712-14	265-45712-15	265-45712-16	265-45712-17	265-45712-18		

\*Applies to all warranties  
 \*\*Inner door gasket kit recommended  
 \*\*\*Ordering a complete burner assembly may increase delivery time. Please order the specific component required for the quickest delivery.  
 ▲ Order with item 36  
 ▲▲ Order with item 37





Item	Description	Model	Model	Model	Model	Model	Model	Model	Model
		MI503*F(BN,CX)	MI50L*F(BN,CX)	MI504S*F(BN,CX)	MI60T*F(BN,CX)	M1XR403S*F(BN,CX)	M2XR504T*F(BN,CX)		
1	Draft Hood	243-45787-00	243-45787-00	243-12960-00	243-45787-00	243-45787-00	243-33081-02-20		
2	Hot Water Outlet Anode Magnesium▲	224-32731-107	224-32731-81	224-32731-82	224-32731-86	224-32731-81	224-32731-86		
	Aluminum▲	224-32999-21	224-32999-31	224-32999-06	224-32999-30	224-32999-31	224-32999-30		
	A420 Aluminum▲	224-45147-02	224-45147-04	224-45147-03	224-45147-01	224-45147-04	224-45147-01		
3	Cold Water Inlet Dip Tube Polypropylene▲	229-39625-22	229-39625-05	229-39625-06	229-39625-14	229-39625-03	229-39625-18		
	Polysulfone (NC Code)▲	229-39628-21	229-39628-05	229-39628-06	229-39628-14	229-39628-03	229-39628-18		
4	Flue Baffle	243-44705-00	243-45223-00	243-45225-00	243-42283-00	243-45223-00	243-41037-00		
5	T&P Relief Valve	265-32920-01	265-32920-01	265-32920-01	265-32920-01	265-32920-01	230-40594-02		
6	Nat. Gas Thermostat	265-46181-01	265-46181-01	265-46181-01	265-46181-01	265-46181-01	265-46181-04		
	LP Gas Thermostat	265-46182-01	265-46182-01	265-46182-01	265-46182-01	265-46182-01	265-46182-02		
7	Piezo Igniter	239-43448-00	239-43448-00	239-43448-00	239-43448-00	239-43448-00	239-43448-00		
7A	Piezo Bracket White Rodgers	239-46157-02	239-46157-02	239-46157-02	239-46157-02	239-46157-02	239-46157-02		
	Piezo Bracket Robertshaw	239-46157-01	239-46157-01	239-46157-01	239-46157-01	239-46157-01	239-46157-01		
8	Brass Drain Valve	265-42351-02	265-42351-02	265-42351-02	265-42351-02	265-42351-02	265-42351-02		
9	Screw-#8-18 x 3/4 HWH	239-44195-00	239-44195-00	239-44195-00	239-44195-00	239-44195-00	239-44195-00		
10	Screw-#10-12 x 3/4 HWH	239-44113-00	239-44113-00	239-44113-00	239-44113-00	239-44113-00	239-44113-00		
11	Left Side Inner Door Complete	239-43968-18	239-43968-20	239-43968-18	239-43968-20	239-43968-18	239-43968-18		
12	Nat. Gas Right Side Inner Door Complete	243-43963-07	239-43963-09	243-43963-06	243-43963-12	243-43963-07	243-43963-07		
	LP Gas Right Side Inner Door Complete	243-43963-07	239-43963-09	243-43963-06	243-43963-13	243-43963-07	243-43963-07		
14	Nat Gas Resettable Thermal Switch	239-43676-02	239-43676-01	239-43676-01	239-43676-02	239-43676-02	239-43676-02		
	LP Gas Resettable Thermal Switch	239-43676-02	239-43676-01	239-43676-01	239-43676-03	239-43676-02	239-43676-02		
15	Screw-#6-20 x 3/8 PHCR	239-43967-00	239-43967-00	239-43967-00	239-43967-00	239-43967-00	239-43967-00		
16	Outer Door	243-43962-00	243-43962-00	243-43962-00	243-43962-00	243-43962-00	243-43962-00		
17	Nat Gas Burner Assembly Complete***	265-43971-03-32	265-43971-04-32	265-43971-03-30	265-43971-07-32	265-43971-03-32	265-43971-04-27		
18	Nat. Gas BN Burner**	228-42506-00	228-42506-00	228-42506-00	228-42506-00	228-42506-00	228-42506-00		
19	Nat. Gas Main Burner Orifice**	234-41034-32	234-41034-32	234-41034-30	234-41034-32	234-41034-32	234-41034-27		
	Nat. Gas High Altitude 2000 Ft. to 5000 Ft.**	234-41034-36	234-41034-36	234-41034-31	234-41034-36	234-41034-36	234-41034-29		
	Nat. Gas High Altitude 5000 Ft. to 8000 Ft.**	234-41034-38	234-41034-38	234-41034-32	234-41034-38	234-41034-38	234-41034-30		
20	Nat. Gas High Altitude Over 8000 Ft.**	234-41034-38	234-41034-38	234-41034-33	234-41034-38	234-41034-38	234-41034-31		
21	Nat. Gas Pilot Assembly**	233-46277-02	233-46277-03	233-46277-02	233-46277-03	233-46277-02	233-46277-03		
22	Nat. Gas Pilot Orifice**	234-46502-05	234-46502-05	234-46502-05	234-46502-05	234-46502-05	234-46502-05		
	Thermocouple**	233-46501-15	233-46501-24	233-46501-15	233-46501-24	233-46501-15	233-46501-24		
23	Nat. Gas FeedLine**	265-43960-03	265-43960-04	265-43960-03	265-43960-09	265-43960-03	265-43960-04		
23A	Nat. Gas FeedLine Adaptor	239-60100-00	239-60100-00	239-60100-00	---	239-60100-00	239-60100-00		
24	LP Gas Burner Assembly Complete***	265-43972-03-51	265-43972-04-50	265-43972-03-47	265-43972-07-50	265-43972-03-50	265-43972-04-43		
25	LP Gas Cast Iron Burner**	228-37743-00	228-37743-00	228-37743-00	228-14173-00	228-37743-00	228-37743-00		

\*Applies to all warranties  
 \*\*Inner door gasket kit recommended  
 \*\*\*Ordering a complete burner assembly may increase delivery time. Please order the specific component required for the quickest delivery.  
 ▲ Order with item 36  
 ▲▲ Order with item 37



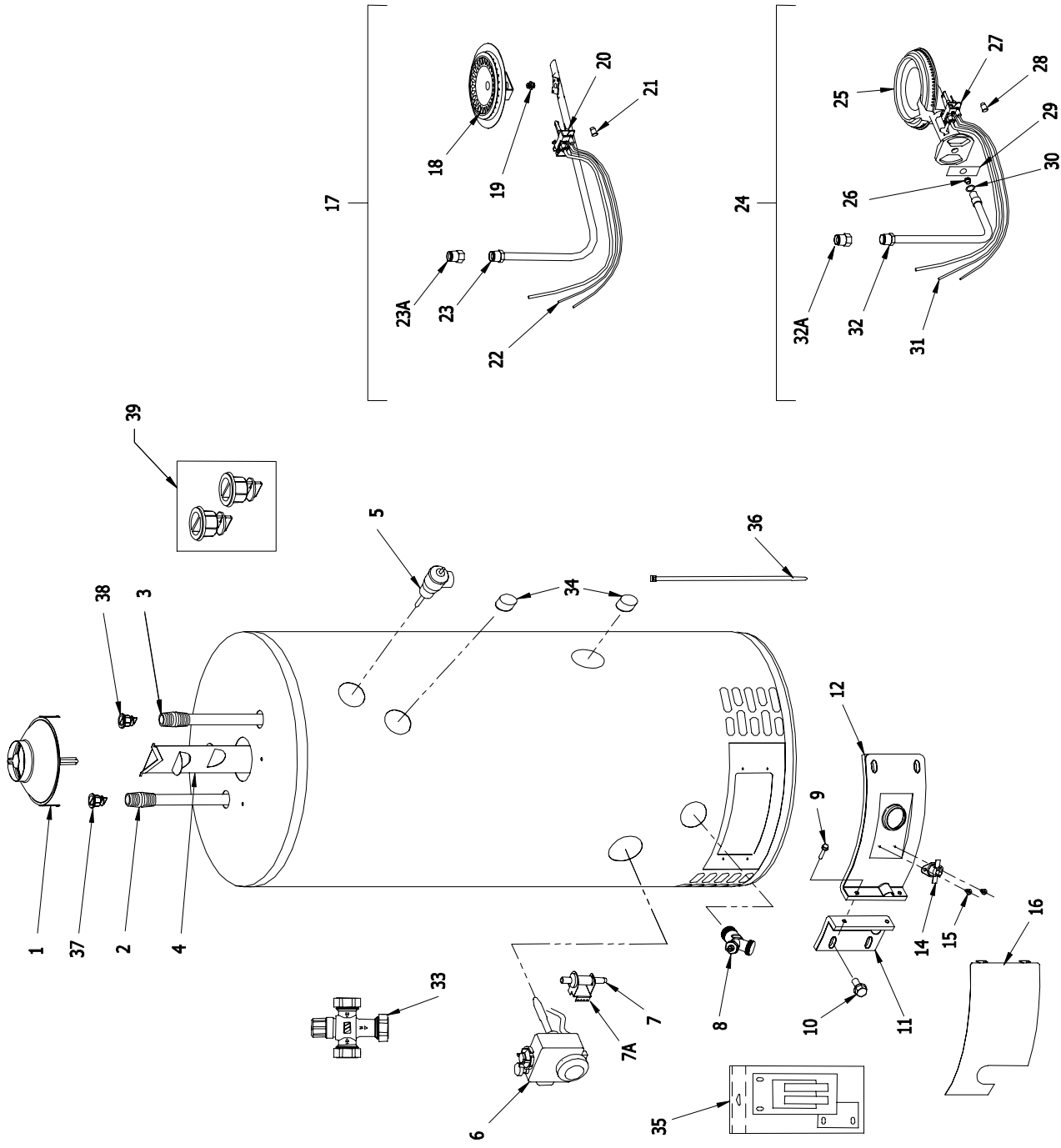




Item	Description	Model	Model	Model	Model	Model	Model	Model	Model
		MI503*F(BN,CX)	MI50L*F(BN,CX)	MI504S*F(BN,CX)	MI60T*F(BN,CX)	M1XR403S*F(BN,CX)	M2XR504T*F(BN,CX)		
26	LP Gas Main Burner Orifice**	234-35928-51	234-35928-50	234-35928-47	234-35928-50	234-35928-50	234-35928-50	234-35928-43	
	LP Gas High Altitude 2000 Ft. to 5000 Ft.**	234-35928-53	234-35928-51	234-35928-49	234-35928-51	234-35928-51	234-35928-51	234-35928-46	
	LP Gas High Altitude 5000 Ft. to 8000 Ft.**	234-35928-53	234-35928-52	234-35928-50	234-35928-52	234-35928-52	234-35928-52	234-35928-47	
	LP Gas High Altitude Over 8000 Ft.**	234-35928-54	234-35928-53	234-35928-51	234-35928-53	234-35928-53	234-35928-53	234-35928-47	
27	LP Gas Pilot Assembly**	233-46278-02	233-46278-03	233-46278-02	233-46278-03	233-46278-02	233-46278-02	233-46278-03	
28	LP Gas Pilot Orifice**	234-46502-02	234-46502-02	234-46502-02	234-46502-02	234-46502-02	234-46502-02	234-46502-02	
29	Air Shutter**	239-35466-00	239-35466-00	239-35466-00	239-35466-00	239-35466-00	239-35466-00	239-35466-00	
30	Air Shutter Nut**	239-18197-00	239-18197-00	239-18197-00	239-18197-00	239-18197-00	239-18197-00	239-18197-00	
31	Thermocouple**	233-46501-24	233-46501-24	233-46501-24	233-46501-24	233-46501-24	233-46501-24	233-46501-24	
32	LP Gas Feed Line**	265-43961-02	265-43961-03	265-43961-02	233-43961-07	265-43961-02	265-43961-02	265-43961-03	
32A	LP Gas Feed Line Adaptor	239-60099-00	239-60099-00	239-60099-00	---	239-60099-00	239-60099-00	239-60099-00	
33	ASSE Approved Mixing Valve (Optional)	239-43740-01	239-43740-01	239-43740-01	239-43740-01	239-43740-01	239-43740-01	239-43740-01	
34	3/4 NPT Plug	---	---	---	---	---	---	---	
35	Inner Door Gasket Kit	239-44078-00	239-44078-00	239-44078-00	239-44078-00	239-44078-00	239-44078-00	239-44078-00	
36	Wire Tie	239-44328-00	239-44328-00	239-44328-00	239-44328-00	239-44328-00	239-44328-00	239-44328-00	
37	Heat Trap Insert (Outlet)	239-45167-00	239-45167-00	239-45167-00	239-45167-00	239-45167-00	239-45167-00	239-45167-00	
38	Heat Trap Insert (Inlet)	239-45073-00	239-45073-00	239-45073-00	239-45073-00	239-45073-00	239-45073-00	239-45073-00	
39	Kit-Heat Trap Insert	265-45420-00	265-45420-00	265-45420-00	265-45420-00	265-45420-00	265-45420-00	265-45420-00	
-	LP to Natural Gas Conversion Kit (Norm Alt.)	265-45712-05	265-45712-07	265-45712-08	265-45712-27	265-45712-05	265-45712-05	265-45712-12	
-	LP to Natural Gas Conversion Kit (High Alt.)	265-45712-17	265-45712-19	265-45712-20	265-45712-28	265-45712-17	265-45712-17	265-45712-24	

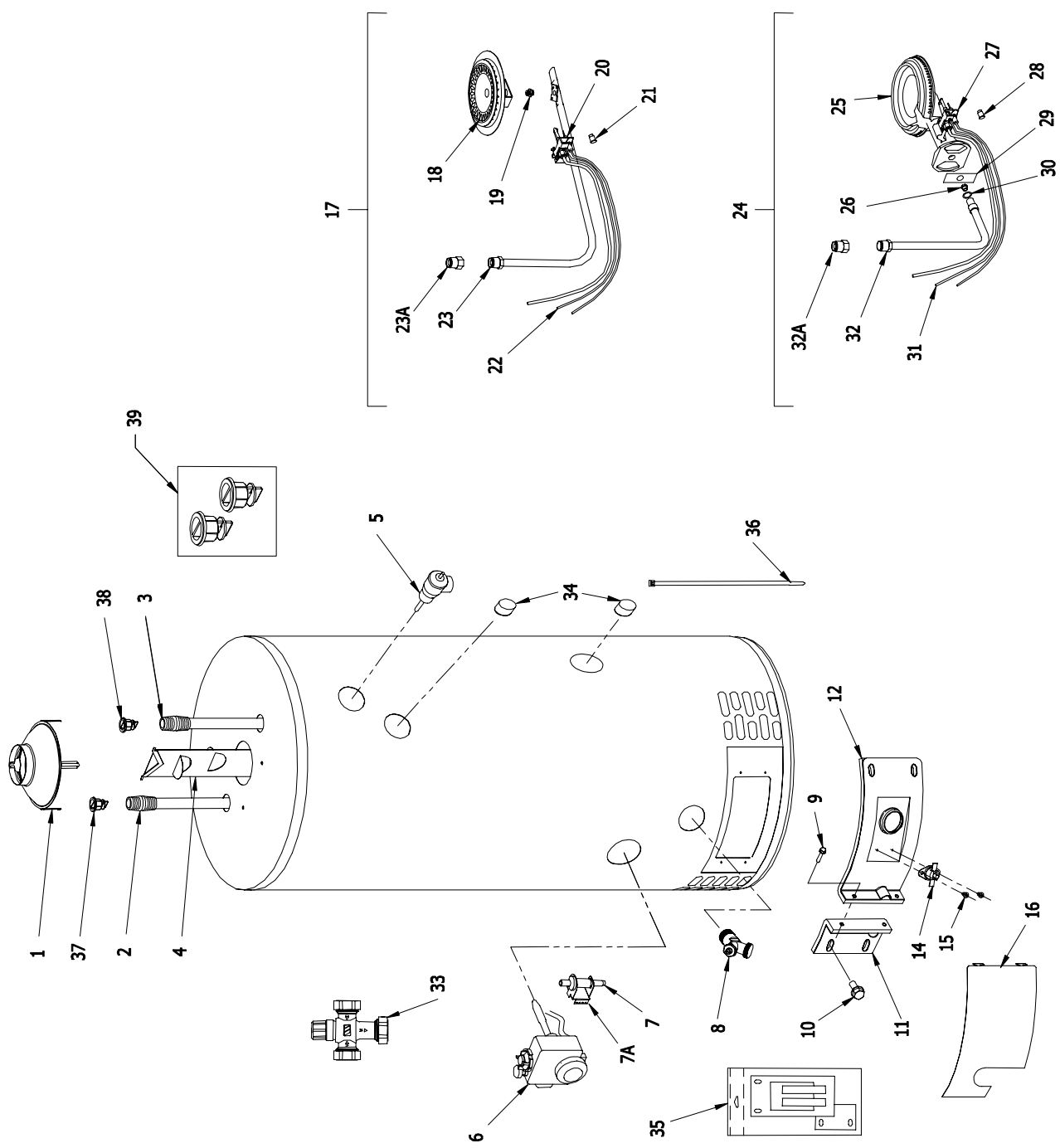
\*Applies to all warranties  
 \*\*Inner door gasket kit recommended  
 \*\*\*Ordering a complete burner assembly may increase delivery time. Please order the specific component required for the quickest delivery.  
 ▲ Order with item 36  
 ▲▲ Order with item 37





Item	Description	Model	Model	Model	Model	Model	Model	Model	Model
		M430T*F(BN,CX)	M4403S*F(BN,CX)	M440T*F(BN,CX)	M4503*F(BN,CX)	M460T*F(BN,CX)	M460T*F(BN,CX)	M460T*F(BN,CX)	50T65F(B)*(N,X)
1	Draft Hood	243-45787-00	243-45787-00	243-45787-00	243-45787-00	243-45787-00	243-45787-00	243-45787-00	243-33081-02-20
2	Hot Water Outlet Anode Magnesium▲	224-32731-95	224-32731-81	224-32731-81	224-32731-107	224-32731-107	224-32731-86	224-32731-101	224-32731-101
	Aluminum▲	224-32999-24	224-32999-31	224-32999-24	224-32999-21	224-32999-21	224-32999-30	224-32999-21	224-32999-21
	A420 Aluminum▲	224-45147-02	224-45147-04	224-45147-02	224-45147-02	224-45147-02	224-45147-02	224-45147-02	224-45147-01
3	Cold Water Inlet Dip Tube Polypropylene▲	229-39625-23	229-39625-03	229-39625-03	229-39625-25	229-39625-22	229-39625-14	229-39625-19	229-39625-19
	Polysulfone (NC Code)▲	229-39628-26	229-39628-03	229-39628-28	229-39628-28	229-39628-21	229-39628-14	229-39628-19	229-39628-19
4	Flue Baffle	243-44639-00	243-45223-00	243-42283-00	243-44705-00	243-42283-00	243-42283-00	243-41037-00	243-41037-00
5	T&P Relief Valve	230-40594-02	230-40594-02	230-40594-02	230-40594-02	230-40594-02	230-40594-02	230-40594-02	230-40594-02
6	Nat. Gas Thermostat	265-46181-02	265-46181-02	265-46181-02	265-46181-02	265-46181-02	265-46181-02	265-46367-02	265-46367-02
	LP Gas Thermostat	265-46182-02	265-46182-02	265-46182-02	265-46182-02	265-46182-02	265-46182-02	265-46368-03	265-46368-03
7	Piezo Igniter	239-43448-00	239-43448-00	239-43448-00	239-43448-00	239-43448-00	239-43448-00	239-43448-00	239-43448-00
7A	Piezo Bracket White Rodgers	239-46157-02	239-46157-02	239-46157-02	239-46157-02	239-46157-02	239-46157-02	239-46157-02	239-46157-02
	Piezo Bracket Robertshaw	239-46157-01	239-46157-01	239-46157-01	239-46157-01	239-46157-01	239-46157-01	239-46157-01	239-46157-01
8	Brass Drain Valve	265-42351-02	265-42351-02	265-42351-02	265-42351-02	265-42351-02	265-42351-02	265-42351-02	265-42351-02
9	Screw-#8-18 x 3/4 HWH	239-44195-00	239-44195-00	239-44195-00	239-44195-00	239-44195-00	239-44195-00	239-44195-00	239-44195-00
10	Screw-#10-12 x 3/4 HWH	239-44113-00	239-44113-00	239-44113-00	239-44113-00	239-44113-00	239-44113-00	239-44113-00	239-44113-00
11	Left Side Inner Door Complete	239-43968-14	239-43968-18	239-43968-16	239-43968-18	239-43968-18	239-43968-20	239-43968-18	239-43968-18
12	Nat. Gas Right Side Inner Door Complete	243-43963-02	243-43963-07	243-43963-05	243-43963-07	243-43963-07	243-43963-12	243-43963-07	243-43963-07
	LP Gas Right Side Inner Door Complete	243-43963-02	243-43963-07	243-43963-04	243-43963-07	243-43963-07	243-43963-13	243-43963-07	243-43963-07
14	Nat Gas Resettable Thermal Switch	239-43676-03	239-43676-02	239-43676-03	239-43676-02	239-43676-02	239-43676-02	239-43676-02	239-43676-02
	LP Gas Resettable Thermal Switch	239-43676-03	239-43676-02	239-43676-02	239-43676-02	239-43676-02	239-43676-03	239-43676-02	239-43676-02
15	Screw-#6-20 x 3/8 PHCR	239-43967-00	239-43967-00	239-43967-00	239-43967-00	239-43967-00	239-43967-00	239-43967-00	239-43967-00
16	Outer Door	243-43962-00	243-43962-00	243-43962-00	243-43962-00	243-43962-00	243-43962-00	243-43962-00	243-43962-00
17	Nat Gas Burner Assembly Complete***	265-43971-02-36	265-43971-04-32	265-43971-03-32	265-43971-04-32	265-43971-04-32	265-43971-06-32	265-43971-04-27	265-43971-04-27
18	Nat. Gas BN Burner**	228-42506-00	228-42506-00	228-42506-00	228-42506-00	228-42506-00	228-42506-00	228-42506-00	228-42506-00
19	Nat. Gas Main Burner Orifice**	234-41034-36	234-41034-32	234-41034-32	234-41034-32	234-41034-32	234-41034-32	234-41034-27	234-41034-27
	Nat. Gas High Altitude 2000 Ft. to 5000 Ft.**	234-41034-39	234-41034-36	234-41034-36	234-41034-36	234-41034-36	234-41034-36	234-41034-29	234-41034-29
	Nat. Gas High Altitude 5000 Ft. to 8000 Ft.**	234-41034-41	234-41034-38	234-41034-36	234-41034-38	234-41034-38	234-41034-38	234-41034-30	234-41034-30
20	Nat. Gas High Altitude Over 8000 Ft.**	234-41034-43	234-41034-38	234-41034-38	234-41034-38	234-41034-38	234-41034-38	234-41034-31	234-41034-31
21	Nat. Gas Pilot Assembly**	233-46277-02	233-46277-03	233-46277-02	233-46277-03	233-46277-03	233-46277-04	233-46277-03	233-46277-03
	Nat. Gas Pilot Orifice**	234-46502-05	234-46502-05	234-46502-05	234-46502-05	234-46502-05	234-46502-05	234-46502-05	234-46502-05
22	Thermocouple**	233-46501-15	233-46501-24	233-46501-15	233-46501-15	233-46501-24	233-46501-24	233-46501-24	233-46501-24
23	Nat. Gas FeedLine**	265-43960-02	265-43960-04	265-43960-03	265-43960-03	265-43960-04	265-43960-10	265-43960-04	265-43960-04
23A	Nat. Gas FeedLine Adaptor	239-60100-00	239-60100-00	239-60100-00	239-60100-00	239-60100-00	---	239-60100-00	239-60100-00
24	LP Gas Burner Assembly Complete***	265-43972-02-60	265-43972-04-50	265-43972-05-52	265-43972-04-51	265-43972-08-50	265-43972-04-43	265-43972-04-43	265-43972-04-43
25	LP Gas Cast Iron Burner**	228-42080-00	228-37743-00	228-42080-00	228-37743-00	228-42080-00	228-14173-00	228-37743-00	228-37743-00

\*Applies to all warranties  
 \*\*Inner door gasket kit recommended  
 \*\*\*Ordering a complete burner assembly may increase delivery time. Please order the specific component required for the quickest delivery.  
 ▲ Order with item 36  
 ▲▲ Order with item 37



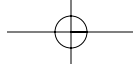
Item	Description	Model	Model	Model	Model	Model	Model	Model	Model
		M430T*F(BN,CX)	M4403S*F(BN,CX)	M440T*F(BN,CX)	M440T*F(BN,CX)	M4503*F(BN,CX)	M460T*F(BN,CX)	M465F(B)*(N,X)	
26	LP Gas Main Burner Orifice**	234-35928-60	234-35928-50	234-35928-52	234-35928-51	234-35928-50	234-35928-50	234-35928-43	
	LP Gas High Altitude 2000 Ft. to 5000 Ft.**	234-35928-54	234-35928-51	234-35928-53	234-35928-53	234-35928-51	234-35928-51	234-35928-46	
	LP Gas High Altitude 5000 Ft. to 8000 Ft.**	234-35928-54	234-35928-52	234-35928-54	234-35928-53	234-35928-52	234-35928-52	234-35928-47	
	LP Gas High Altitude Over 8000 Ft.**	234-35928-54	234-35928-53	234-35928-54	234-35928-54	234-35928-54	234-35928-54	234-35928-47	
27	LP Gas Pilot Assembly**	233-46278-02	233-46278-03	233-46278-03	233-46278-03	233-46278-04	233-46278-04	233-46278-03	
28	LP Gas Pilot Orifice**	234-46502-02	234-46502-02	234-46502-02	234-46502-02	234-46502-02	234-46502-02	234-46502-02	
29	Air Shutter**	239-35466-00	239-35466-00	239-35466-00	239-35466-00	239-35466-00	239-35466-00	239-35466-00	
30	Air Shutter Nut**	239-18197-00	239-18197-00	239-18197-00	239-18197-00	239-18197-00	239-18197-00	239-18197-00	
31	Thermocouple**	233-46501-24	233-46501-24	233-46501-24	233-46501-24	233-46501-24	233-46501-24	233-46501-24	
32	LP Gas Feed Line**	265-43961-02	265-43961-03	265-43961-03	265-43961-03	265-43961-08	233-43961-08	265-43961-03	
32A	LP Gas Feed Line Adaptor	239-60099-00	239-60099-00	239-60099-00	239-60099-00	239-60099-00	---	239-60099-00	
33	ASSE Approved Mixing Valve (Optional)	239-43740-01	239-43740-01	239-43740-01	239-43740-01	239-43740-01	239-43740-01	239-43740-01	
34	3/4 NPT Plug	---	---	---	---	---	---	239-11638-00	
35	Inner Door Gasket Kit	239-44078-00	239-44078-00	239-44078-00	239-44078-00	239-44078-00	239-44078-00	239-44078-00	
36	Wire Tie	239-44328-00	239-44328-00	239-44328-00	239-44328-00	239-44328-00	239-44328-00	239-44328-00	
37	Heat Trap Insert (Outlet)	239-45167-00	239-45167-00	239-45167-00	239-45167-00	239-45167-00	239-45167-00	239-45167-00	
38	Heat Trap Insert (Inlet)	239-45073-00	239-45073-00	239-45073-00	239-45073-00	239-45073-00	239-45073-00	239-45073-00	
39	Kit-Heat Trap Insert	265-45420-00	265-45420-00	265-45420-00	265-45420-00	265-45420-00	265-45420-00	265-45420-00	
-	LP to Natural Gas Conversion Kit (Norm Alt.)	265-45712-09	265-45712-11	265-45712-10	265-45712-11	265-45712-11	265-45712-29	265-45712-25	
-	LP to Natural Gas Conversion Kit (High Alt.)	265-45712-21	265-45712-23	265-45712-22	265-45712-23	265-45712-23	265-45712-29	265-45712-26	

\*Applies to all warranties  
 \*\*Inner door gasket kit recommended  
 \*\*\*Ordering a complete burner assembly may increase delivery time. Please order the specific component required for the quickest delivery.  
 ▲ Order with item 36  
 ▲▲ Order with item 37









**BRADFORD WHITE<sup>®</sup>**  
C O R P O R A T I O N  
Ambler, PA

For U.S. and Canada field service,  
contact your professional installer or  
local Bradford White sales representative.

**Sales/800-523-2931**  
***Fax/215-641-1670***

**Application & Sizing/800-523-2931**  
***Fax/215-641-1612***

**Technical Support/800-334-3393**  
***Fax/269-795-1089***

**Warranty/800-531-2111**  
***Fax/269-795-1089***

**International:**  
**Telephone/215-641-9400**  
***Telefax/215-641-9750***



**BRADFORD WHITE-CANADA<sup>®</sup> INC.**  
Mississauga, ON

**Sales/Technical Support**  
**866-690-0961**  
**905-238-0100**  
***Fax/905-238-0105***

**Email**  
**parts@bradfordwhite.com**  
**techserv@bradfordwhite.com**

**www.bradfordwhite.com**  
**www.bradfordwhitecanada.com**

