



**RESIDENTIAL & LIGHT DUTY COMMERCIAL GAS  
REPLACEMENT PARTS LIST**

*The Bradford White*  
**DEFENDER Safety System**<sup>™</sup>

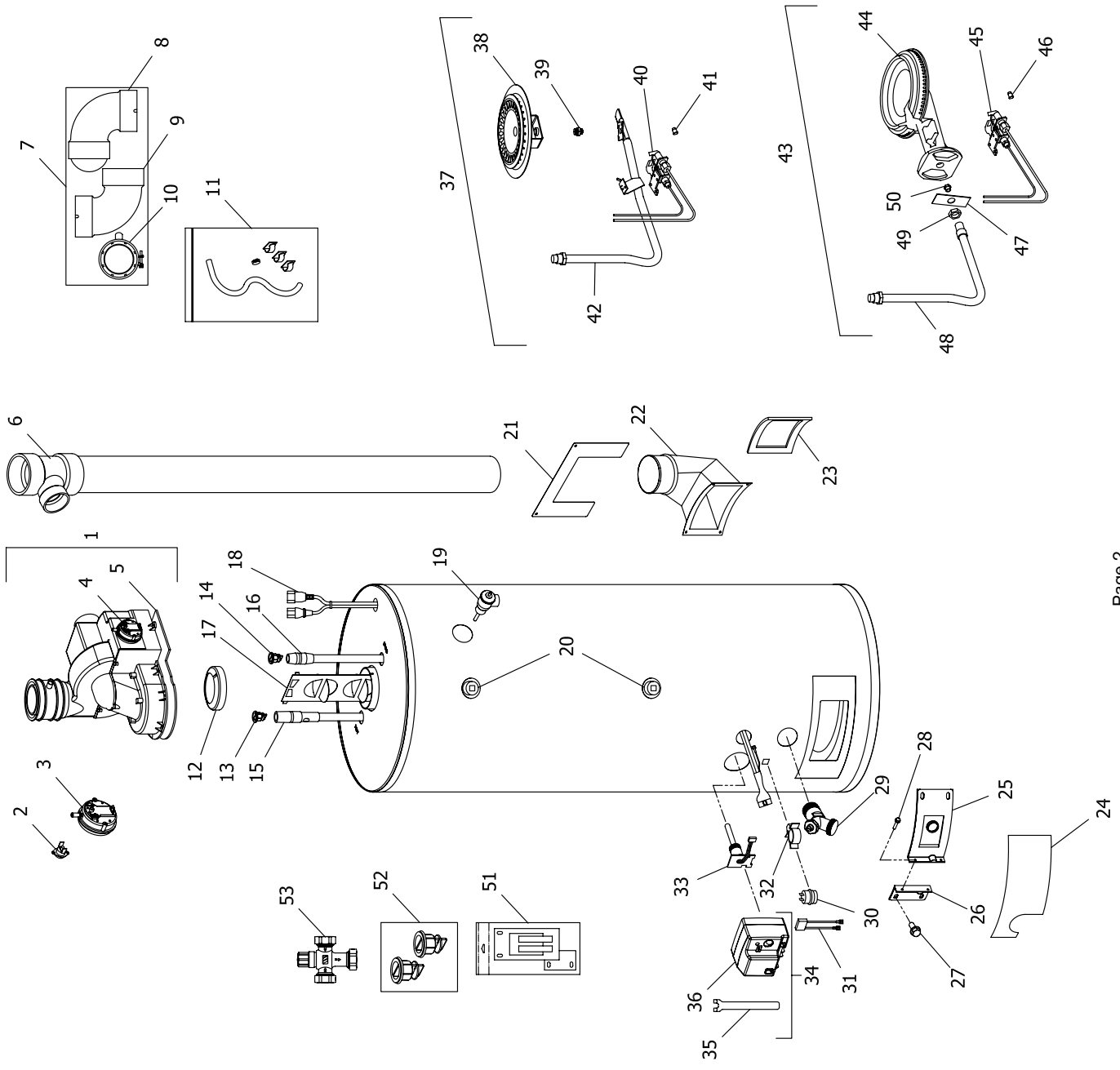


**Power Direct Vent Models  
“PDX”, “PDX2” Series**

*Effective: August 8 2007  
ECO 7255-1*

**NOTE: BOTH MODEL AND  
SERIAL NUMBERS ARE  
REQUIRED FOR ORDERING  
REPLACEMENTS PARTS.**

Specification subject to  
change without notice.



Item	Description	Model	Model	Model	Model	Model	Model	Model	Model
		PDX250T*F(BN, CX)	PDX265T*F(BN, CX)	PDX275T*F(BN, CX)	PDX50560F(B*N,C*X)	PDX65S65F(B*N,C*X)	PDX75S70F(B*N,C*X)		
1	Blower Assembly (Normal Alt.)	239-46719-00	239-46719-00	239-46719-00	239-46719-00	239-46719-00	239-46719-00	239-46719-00	239-46719-00
	Blower Assembly (High Alt.)	243-46881-00	243-46881-00	243-46881-00	243-46881-00	243-46881-00	243-46881-00	243-46881-00	243-46881-00
2	Blower Temperature Switch	239-45865-00	239-45865-00	239-45865-00	239-45865-00	239-45865-00	239-45865-00	239-45865-00	239-45865-00
3	Pressure Switch N.O. (Normal Alt.) Intake	239-46880-01	239-46880-01	239-46880-01	239-46880-01	239-46880-01	239-46880-01	239-46880-01	239-46880-01
	Pressure Switch N.O. (High Alt.) Intake	239-46880-02	239-46880-02	239-46880-02	239-46880-02	239-46880-02	239-46880-02	239-46880-02	239-46880-02
4	Pressure Switch N.C. Exhaust	239-46879-01	239-46879-01	239-46879-01	239-46879-01	239-46879-01	239-46879-01	239-46879-01	239-46879-01
5	Blower Gasket	239-45866-00	239-45866-00	239-45866-00	239-45866-00	239-45866-00	239-45866-00	239-45866-00	239-45866-00
6	Tee and vent pipe Assembly	239-46823-01	239-46823-02	239-46823-03	239-46823-01	239-46823-01	239-46823-02	239-46823-03	239-46823-03
7	Vent Adapter with Vent Terminal	239-46811-00	239-46811-00	239-46811-00	239-46811-00	239-46811-00	239-46811-00	239-46811-00	239-46811-00
8	Intake Terminal	239-42642-01	239-42642-01	239-42642-01	239-42642-01	239-42642-01	239-42642-01	239-42642-01	239-42642-01
9	Vent Terminal Elbow	239-40579-00	239-40579-00	239-40579-00	239-40579-00	239-40579-00	239-40579-00	239-40579-00	239-40579-00
10	Exhaust Adapter	239-45880-00	239-45880-00	239-45880-00	239-45880-00	239-45880-00	239-45880-00	239-45880-00	239-45880-00
11	Condensate Hose Kit	239-45875-00	239-45875-00	239-45875-00	239-45875-00	239-45875-00	239-45875-00	239-45875-00	239-45875-00
12	Flue Reducer	243-42572-00	243-42572-00	---	243-42572-00	243-42572-00	243-42572-00	---	---
13	Heat Trap Insert (Outlet)	239-45167-00	239-45167-00	239-45167-00	239-45167-00	239-45167-00	239-45167-00	239-45167-00	239-45167-00
14	Heat Trap Insert (Inlet)	239-45073-00	239-45073-00	239-45073-00	239-45073-00	239-45073-00	239-45073-00	239-45073-00	239-45073-00
15	Hot Water Outlet Anode Magnesium	224-32731-86	224-32731-83	224-32731-83	224-32731-86	224-32731-83	224-32731-83	224-32731-83	224-32731-83
	Aluminum	224-32999-21	224-32999-06	224-32999-06	224-32999-21	224-32999-06	224-32999-06	224-32999-06	224-32999-06
	A420 Aluminum	224-45147-03	224-45147-03	224-45147-03	224-45147-03	224-45147-03	224-45147-03	224-45147-03	224-45147-03
16	Cold Water Inlet Dip Tube Polypropylene	229-39625-17	229-45398-07	229-45398-07	229-39625-19	229-45398-07	229-45398-02	229-45398-07	229-45398-07
	Polysulfone (NC Code)	229-39628-17	229-45092-04	229-45092-04	229-39628-19	229-45092-04	229-45092-03	229-45092-04	229-45092-04
17	Flue Baffle	239-45373-00	239-45373-00	239-42899-00	239-45373-00	239-45373-00	239-45373-00	239-45373-00	239-42899-00
18	Blower Harness	239-45617-02	239-45617-02	239-45617-02	239-45617-02	239-45617-02	239-45617-02	239-45617-02	239-45617-02
19	T&P Relief Valve	230-40594-02	230-32920-01	230-40594-02	230-40594-03	230-40594-01	230-40594-01	230-40594-03	230-40594-03
20	3/4 NPT Plug	239-11638-00	239-11638-00	239-11638-00	239-11638-00	239-11638-00	239-11638-00	239-11638-00	239-11638-00
21	Direct Vent Boot Escutcheon	243-46922-00	243-46922-00	243-46922-00	243-46922-00	243-46922-00	243-46922-00	243-46922-00	243-46922-00
22	Air Intake boot	239-46756-01	239-46756-02	239-46756-03	239-46756-01	239-46756-02	239-46756-02	239-46756-03	239-46756-03
23	Air Intake Boot Gasket	223-41067-00	223-41067-00	223-41067-00	223-41067-00	223-41067-00	223-41067-00	223-41067-00	223-41067-00
24	Outer Door	243-43962-00	243-43962-00	243-43962-00	243-43962-00	243-43962-00	243-43962-00	243-43962-00	243-43962-00
25	Right Side Inner Door	239-45642-18	239-45642-20	239-45642-20	239-45642-18	239-45642-20	239-45642-20	239-45642-20	239-45642-20
26	Left Side Inner Door	239-43968-18	239-43968-20	239-43968-20	239-43968-18	239-43968-20	239-43968-20	239-43968-20	239-43968-20
27	Screw-#10-12 x 3/4 HWH	239-44113-00	239-44113-00	239-44113-00	239-44113-00	239-44113-00	239-44113-00	239-44113-00	239-44113-00
28	Screw-#8-18 x 3/4 HWH	239-44195-00	239-44195-00	239-44195-00	239-44195-00	239-44195-00	239-44195-00	239-44195-00	239-44195-00
29	Brass Drain Valve	265-42351-02	265-42351-02	265-42351-02	265-42351-02	265-42351-02	265-42351-02	265-42351-02	265-42351-02
30	Flammable Vapor Sensor	239-45560-00	239-45560-00	239-45560-00	239-45560-00	239-45560-00	239-45560-00	239-45560-00	239-45560-00
31	Sensor Harness	239-45620-00	239-45620-00	239-45620-00	239-45620-00	239-45620-00	239-45620-00	239-45620-00	239-45620-00
32	Flammable Vapor Sensor Clip	239-45648-00	239-45648-00	239-45648-00	239-45648-00	239-45648-00	239-45648-00	239-45648-00	239-45648-00
33	Thermal Well	239-45651-02	239-45651-01	239-45651-02	239-45651-02	239-45651-01	239-45651-01	239-45651-02	239-45651-02
34	Gas Control Kit (Nat)	265-45613-01	265-45613-01	265-45613-01	265-45613-01	265-45613-02	265-45613-02	265-45613-02	265-45613-02
	Gas Control Kit (LP)	265-45614-01	265-45614-01	265-45614-01	265-45614-01	265-45614-02	265-45614-02	265-45614-02	265-45614-02
35	Gas Control Service Tool	239-45991-00	239-45991-00	239-45991-00	239-45991-00	239-45991-00	239-45991-00	239-45991-00	239-45991-00
36	Nat. Gas Control	222-45613-01	222-45613-01	222-45613-01	222-45613-01	222-45613-02	222-45613-02	222-45613-02	222-45613-02
	LP Gas Control	222-45614-01	222-45614-01	222-45614-01	222-45614-01	222-45614-02	222-45614-02	222-45614-02	222-45614-02

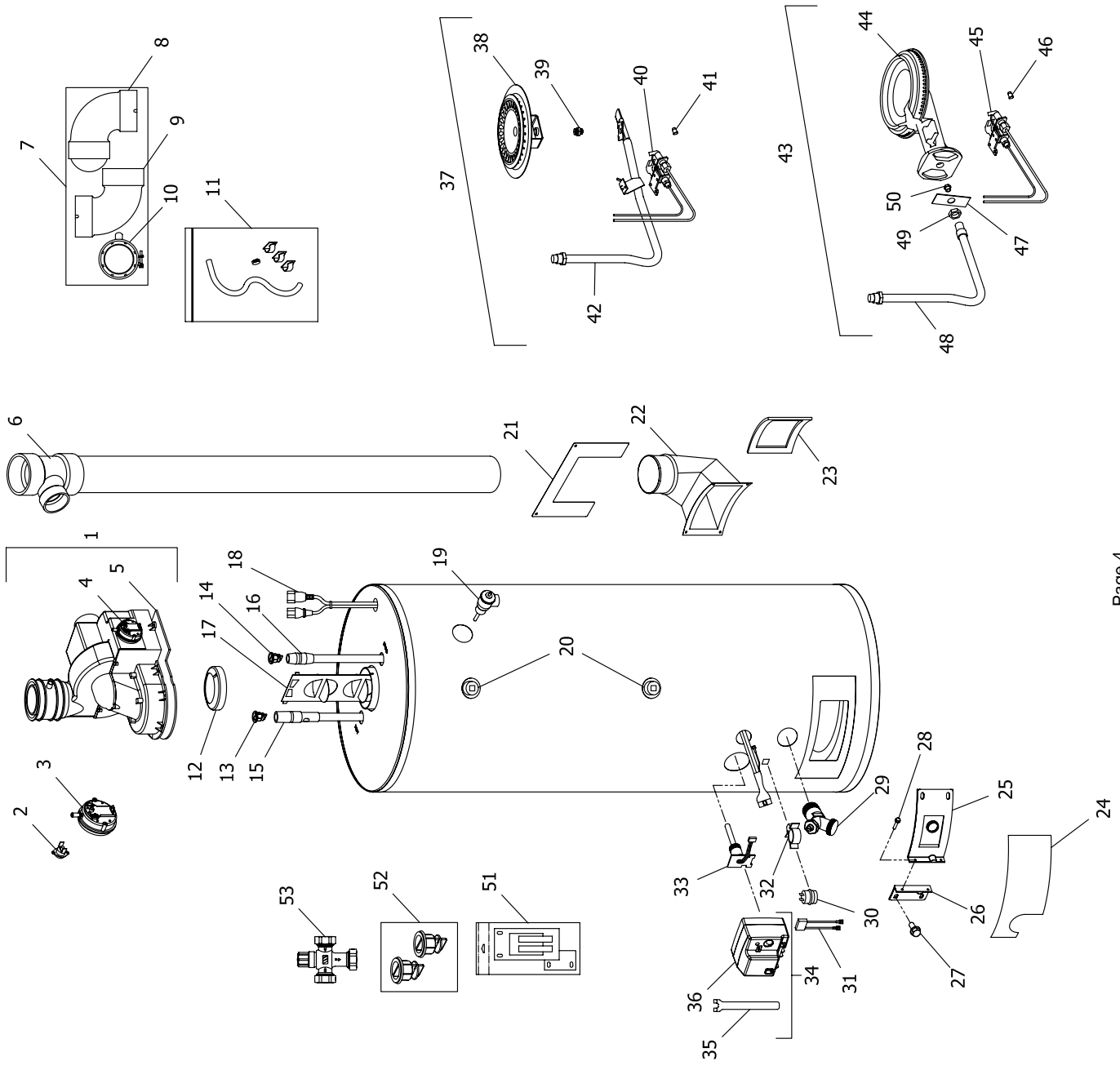
\*Applies to all warranties

\*\*Inner door gasket kit recommended

\*\*\*Ordering a complete burner assembly may increase delivery time. Please order the specific component required for the quickest delivery.

▲ Order with item 37

▲▲ Order with item 38



Item	Description	Model	Model	Model	Model	Model	Model	Model	Model
		PDX250T*F(BN, CX)	PDX265T*F(BN, CX)	PDX275T*F(BN, CX)	PDX50560F(B*N,C*X)	PDX65S65F(B*N,C*X)	PDX75S70F(B*N,C*X)		
37	Nat Gas Burner Assembly Complete***	243-45652-02	243-45652-02	243-45652-05	243-45652-02	243-45652-02	243-45652-02	243-45652-05	
38	Nat. Gas BN Burner**	228-42506-00	228-42506-00	228-42506-00	228-42506-00	228-42506-00	228-42506-00	228-42506-00	
39	Nat. Gas Main Burner Orifice**	234-41034-28	234-41034-27	234-41034-25	234-41034-28	234-41034-27	234-41034-27	234-41034-25	
	Nat. Gas High Altitude 2000 Ft. to 5000 Ft.**	234-41034-30	234-41034-29	234-41034-27	234-41034-30	234-41034-29	234-41034-29	234-41034-27	
	Nat. Gas High Altitude 5000 Ft. to 8000 Ft.**	234-41034-31	234-41034-31	234-41034-30	234-41034-31	234-41034-31	234-41034-31	234-41034-30	
	Nat. Gas High Altitude Over 8000 Ft.**	234-41034-31	234-41034-31	234-41034-30	234-41034-31	234-41034-31	234-41034-31	234-41034-30	
40	Nat. Gas Pilot Assembly**	233-45653-01	233-45653-02	233-45653-02	233-45653-01	233-45653-01	233-45653-01	233-45653-02	
41	Nat. Gas Pilot Orifice**	234-45869-01	234-45869-01	234-45869-01	234-45869-01	234-45869-01	234-45869-01	234-45869-01	
42	Nat. Gas FeedLine**	233-45615-02	233-45615-02	233-45615-05	233-45615-02	233-45615-02	233-45615-02	233-45615-05	
43	LP Gas Burner Assembly Complete***	243-45655-02	243-45655-02	243-45655-05	243-45655-02	243-45655-02	243-45655-02	243-45655-05	
44	LP Gas Cast Iron Burner**	228-37743-00	228-37743-00	228-37743-00	228-37743-00	228-37743-00	228-37743-00	228-37743-00	
45	LP Gas Pilot Assembly**	233-45653-03	233-45653-03	233-45653-04	233-45653-03	233-45653-03	233-45653-03	233-45653-04	
46	LP Gas Pilot Orifice**	234-45869-02	234-45869-02	234-45869-02	234-45869-02	234-45869-02	234-45869-02	234-45869-02	
47	Air Shutter**	243-35466-00	243-35466-00	243-35466-00	243-35466-00	243-35466-00	243-35466-00	243-35466-00	
48	LP Gas Feed Line**	233-45616-02	233-45616-02	233-45616-05	233-45616-02	233-45616-02	233-45616-02	233-45616-05	
49	Air Shutter Nut**	239-18197-00	239-18197-00	239-18197-00	239-18197-00	239-18197-00	239-18197-00	239-18197-00	
50	LP Gas Main Burner Orifice**	234-35928-44	234-35928-44	234-35928-42	234-35928-44	234-35928-44	234-35928-44	234-35928-42	
	LP Gas High Altitude 2000 Ft. to 5000 Ft.**	234-35928-47	234-35928-47	234-35928-44	234-35928-47	234-35928-47	234-35928-47	234-35928-44	
	LP Gas High Altitude 5000 Ft. to 8000 Ft.**	234-35928-48	234-35928-48	234-35928-45	234-35928-48	234-35928-48	234-35928-48	234-35928-45	
	LP Gas High Altitude Over 8000 Ft.**	234-35928-49	234-35928-49	234-35928-47	234-35928-49	234-35928-49	234-35928-49	234-35928-47	
51	Inner Door Gasket Kit	239-44078-00	239-44078-00	239-44078-00	239-44078-00	239-44078-00	239-44078-00	239-44078-00	
52	Heat Trap Insert Kit	265-45419-00	265-45419-00	265-45419-00	265-45419-00	265-45419-00	265-45419-00	265-45419-00	
53	ASSE Approved Mixing Valve (Optional)	239-43740-01	239-43740-01	239-43740-01	239-43740-01	239-43740-01	239-43740-01	239-43740-01	
-	LP to Natural Gas Conversion Kit (Norm Alt.)	265-46493-23	265-46493-24	265-46493-25	265-46493-23	265-46493-23	265-46493-24	265-46493-25	
-	LP to Natural Gas Conversion Kit (High Alt.)	265-46493-29	265-46493-30	265-46493-31	265-46493-29	265-46493-29	265-46493-30	265-46493-31	

\*Applies to all warranties

\*\*Inner door gasket kit recommended

\*\*\*Ordering a complete burner assembly may increase delivery time. Please order the specific component required for the quickest delivery.

▲▲ Order with item 37

▲▲ Order with item 38







Ambler, PA

For U.S. and Canada field service,  
contact your professional installer or  
local Bradford White sales representative.

**Sales/800-523-2931**

**Fax/215-641-1670**

**Application & Sizing/800-523-2931**

**Fax/215-641-1612**

**Technical Support/800-334-3393**

**Fax/269-795-1089**

**Warranty/800-531-2111**

**Fax/269-795-1089**

**International:**

**Telephone/215-641-9400**

**Telefax/215-641-9750**



Mississauga, ON

**Sales/Technical Support**

**866-690-0961**

**905-238-0100**

**Fax/905-238-0105**

**Email**

**parts@bradfordwhite.com**

**techserv@bradfordwhite.com**

**www.bradfordwhite.com**

**www.bradfordwhitecanada.com**