



RESIDENTIAL AND LIGHT DUTY COMMERCIAL GAS REPLACEMENT PARTS LIST

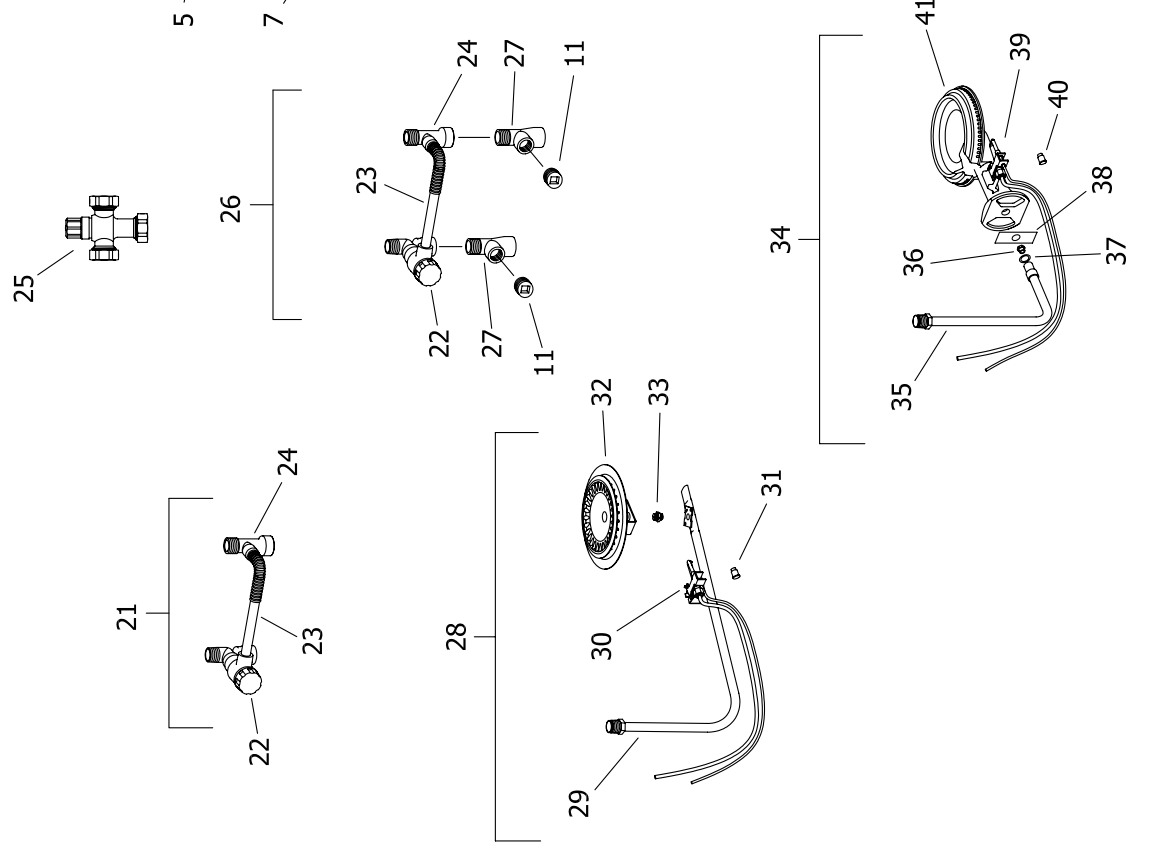
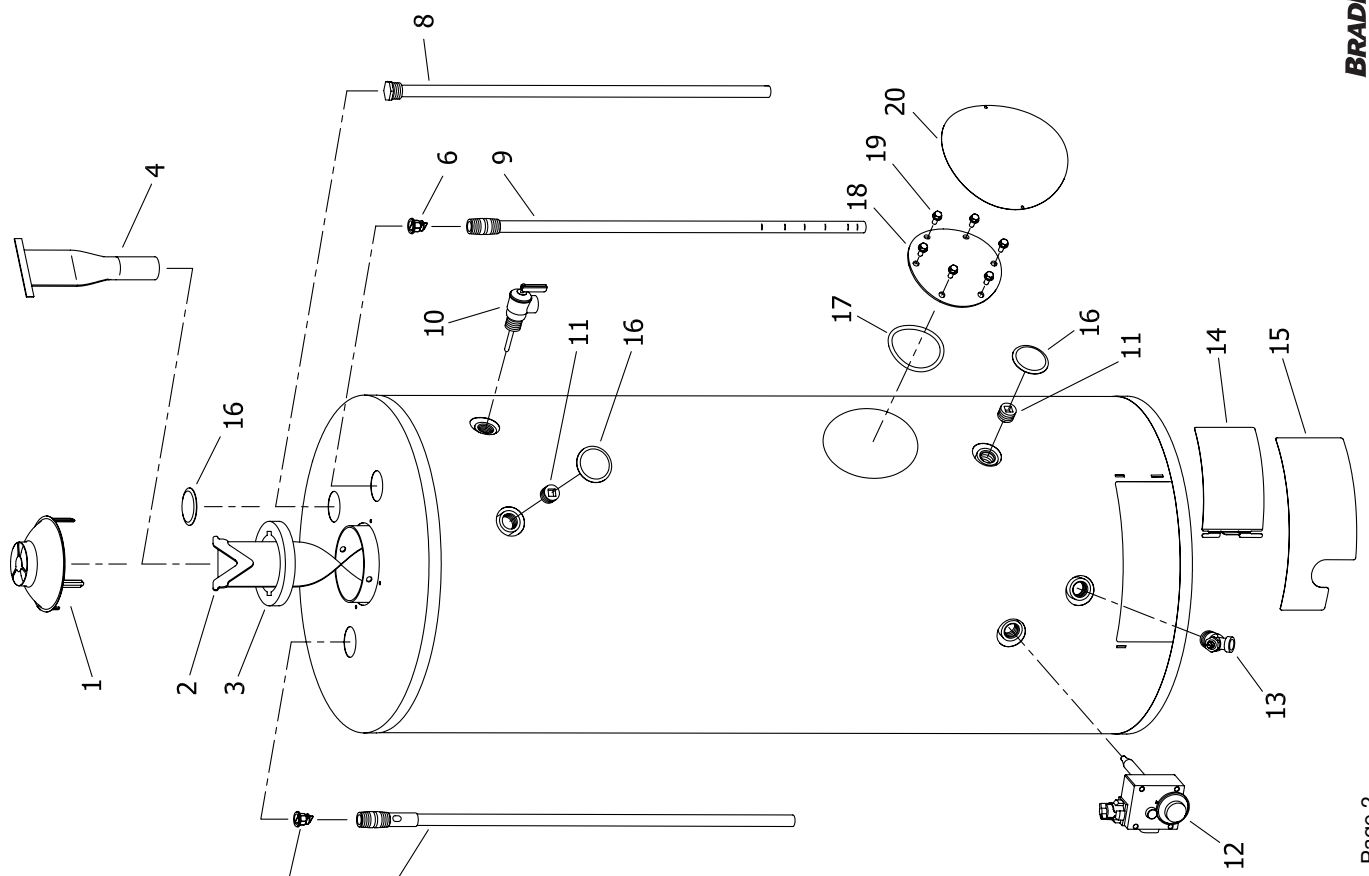
High Performance Energy Saver (GX)
Non-Defender Energy Saver M(1,1,2)(XR)(65,75,100) Gallon
Light Duty Energy Saver



Effective: March 1, 2007
ECO 7225

**NOTE: BOTH MODEL AND
SERIAL NUMBERS ARE
REQUIRED FOR ORDERING
REPLACEMENTS PARTS.**

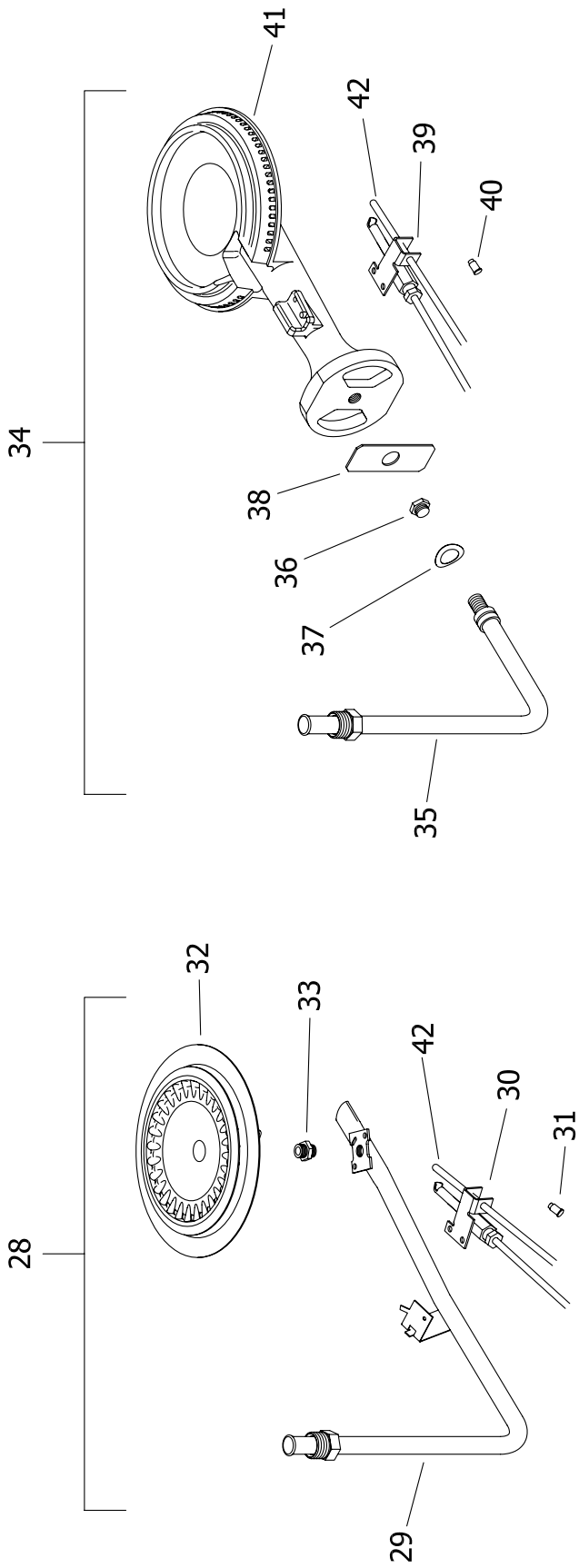
Specification subject to
change without notice.



Item	Description	Model	Model	Model	Model	Model	Model	Model
1	Draft Diverter	GX225S*BN	GX155S*BN	M1XR65T*(BN,CX)	M175S*(BN,CX)	M2XR75S*(BN,CX)	MI100T*(BN,CX)	MI100T*(BN,CX)
2	Flue Baffle	243-33081-02-20	243-33081-02-20	243-33081-02-20	239-12950-00	239-12950-00	243-33081-01-20	243-33081-01-20
3	Flue Reducer	---	---	243-44649-00	243-42557-00	243-42557-00	---	---
4	Flue Core	243-42572-00	243-42572-00	243-36920-00	243-36920-00	243-36920-00	243-36920-00	243-36920-00
5	Heat Trap Insert (Outlet)	239-45676-00	239-45676-00	---	---	---	---	---
6	Heat Trap Insert (Inlet)	---	---	239-45167-00	---	---	---	---
7	Hot Water Outlet Anode Magnesium ▲	224-32731-101	224-32731-101	239-45073-00	---	---	---	---
	Aluminum ▲	224-32999-21	224-32999-21	224-32731-83	---	---	---	---
	A420 Aluminum ▲	224-45147-02	224-45147-02	224-32999-07	---	---	---	---
8	Plug type Anode Magnesium	224-32758-19	224-32758-19	224-45147-01	---	---	---	---
9	Cold Water Inlet Diptube Polypropylene ▲▲	224-32999-06	224-32999-06	---	224-32758-07	224-32758-07	224-32758-14	224-32758-14
	Polysulfone (NC Code)▲▲	---	---	229-39625-08	224-32999-30	224-32999-30	224-32999-13	224-32999-13
	Stainless Steel	229-45092-02	229-45092-02	229-39628-08	229-44700-05	229-44700-05	---	---
10	T&P Relief Valve	---	---	---	229-43632-06	229-43632-06	---	---
11	3/4" NPT Plug	230-40594-02	230-32920-01	230-32920-01	---	---	229-43193-00	229-43193-00
12	Combination Gas Valve Natural Gas	239-11638-00	239-11638-00	239-11638-00	230-32920-01	230-32920-01	230-40594-02	230-40594-02
	Combination Gas Valve LP Gas	265-46365-06	265-46365-05	265-40251-02	239-11638-00	239-11638-00	239-11638-00	239-11638-00
13	Brass Drain Valve	---	---	265-40251-02	265-40251-02	265-40251-02	265-40251-03	265-40251-07
14	Inner Door Complete	265-42351-02	265-42351-02	265-40258-02	265-40258-02	265-40258-02	265-40258-03	265-40258-07
15	Outer Door	243-46049-00	243-46049-00	265-42351-02	265-42351-02	265-42351-02	265-42351-02	265-42351-04
16	Hole Closure	243-41061-00	243-41061-00	243-36739-02	243-39207-00	243-39207-00	243-39207-00	243-39207-00
17	Cleanout O-Ring Gasket	239-31547-02	239-31547-02	243-41061-00	243-37177-00	243-37177-00	243-37177-00	243-37177-00
18	Cleanout Cover	---	---	239-31547-02	239-31547-02	239-31547-02	239-31547-02	239-31547-02
19	Cleanout Cover Screw (Qty. 6)	---	---	---	---	---	---	---
20	Cleanout Access Cover	---	---	---	---	---	---	---
21	Intergrated Mixing Device	239-46225-02	239-46225-02	239-46225-01	239-46225-01	239-46225-01	239-46225-01	239-46225-01
22	Outlet Mixing Device	239-45631-00	239-45631-00	239-45631-00	239-45631-00	239-45631-00	239-45631-00	239-45631-00
23	Flexible Connector	239-46347-01	239-46347-01	239-46347-02	239-46347-02	239-46347-02	239-46347-02	239-46347-02
24	Inlet Tee	239-45632-00	239-45632-00	239-45632-00	239-45632-00	239-45632-00	239-45632-00	239-45632-00
25	Mixing Device	---	---	239-43740-00	239-43740-00	239-43740-00	239-43740-00	239-43740-00
26	Kit-Alternate Temperature Water Outlet	---	---	---	---	---	---	---
27	Street Tee 3/4" NPT	---	---	---	---	---	---	---

*Applies to all warranties
 **Ordering a complete burner assembly may increase delivery time. Please order the specific component required for the quickest delivery.
 ▲ Order with item 5
 ▲▲ Order with item 6

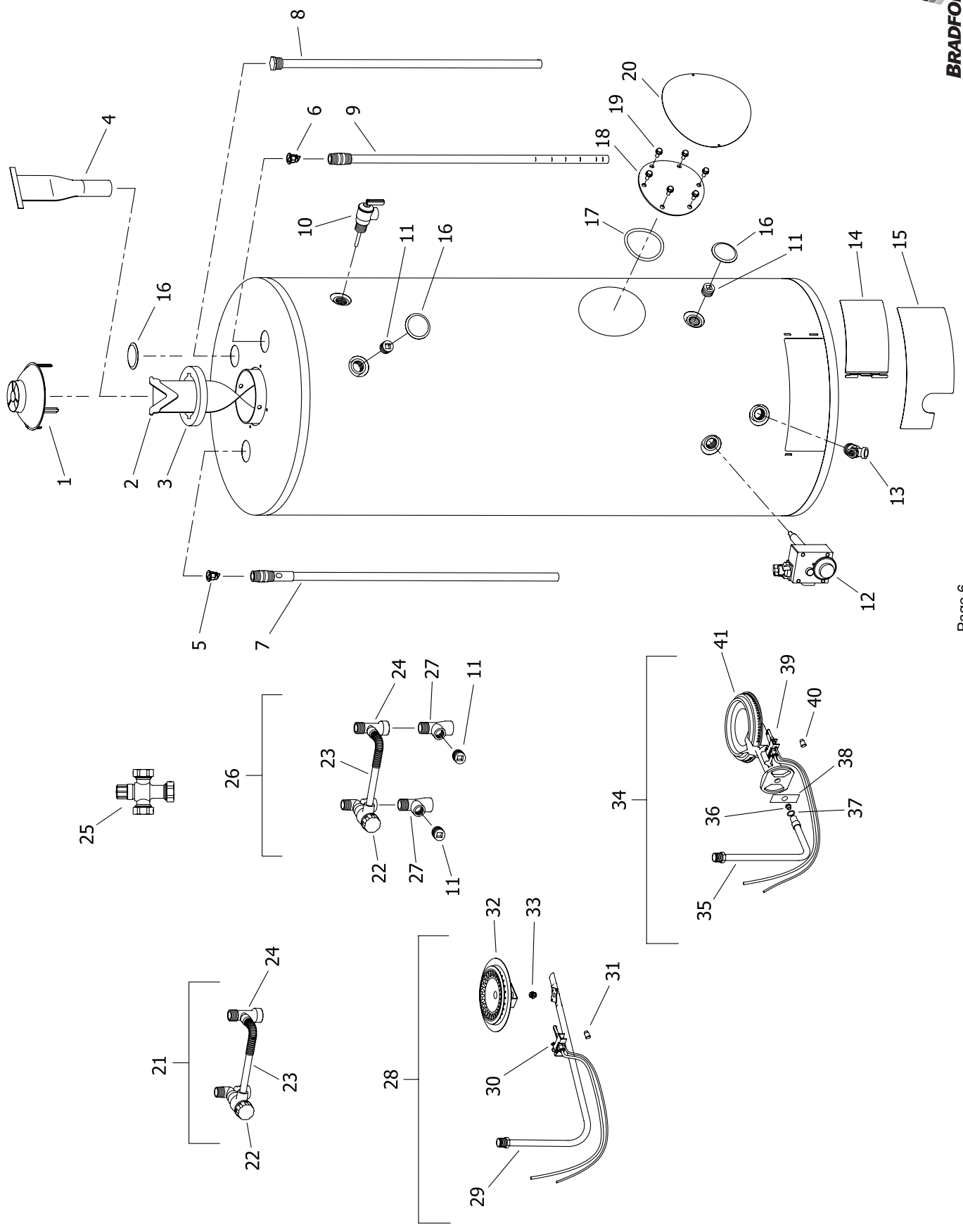




Item	Description	Model	Model	Model	Model	Model	Model	Model	Model
28	Nat. Gas Burner Assembly Complete **	GX2225S*BN	GX155S*BN	M1XR65T*(BN,CX)	M175S*(BN,CX)	M2XR75S*(BN,CX)	M1100T*(BN,CX)		
29	Nat. Gas Feedline	265-46004-01-21	265-46004-03-20	265-43957-05-27	265-43979-02-21	265-43979-03-21	265-43979-01-20		
30	Nat. Gas Pilot Assembly	265-43660-13	265-43660-15	265-43660-10	265-42567-04	265-42567-06	265-42567-05		
31	Nat. Gas Pilot Orifice	233-40248-02	233-40248-04	233-40248-04	233-40248-05	233-40248-05	233-40248-05		
32	Nat. Gas BN Burner	234-46502-03	234-46502-03	234-46502-03	234-46502-03	234-46502-03	234-46502-03		
33	Nat. Gas Main Burner Orifice (0ft to 2000ft)	228-42506-00	228-42506-00	228-42506-00	228-42506-00	228-42506-00	228-42506-00		
	Nat. Gas High Altitude (2001ft to 5000ft)	234-41034-21	234-41034-20	234-41034-27	234-41034-21	234-41034-21	234-41034-20		
	Nat. Gas High Altitude (5001ft to 8000ft)	234-41034-23	234-41034-22	234-41034-29	234-41034-24	234-41034-24	234-41034-22		
	Nat. Gas High Altitude (8001ft & above)	234-41034-23	234-41034-22	234-41034-29	234-41034-28	234-41034-28	234-41034-22		
34	LP Gas Cast Iron Burner Assembly Complete **	234-41034-28	234-41034-27	234-41034-31	234-41034-28	234-41034-28	234-41034-27		
35	LP Gas Feedline	---	---	265-41876-29-43	265-41876-32-38	265-41876-24-38	265-41876-27-35		
36	LP Gas Main Burner Orifice (0ft to 2000ft)	---	---	265-41818-14	265-41818-17	265-41818-18	265-41818-16		
	LP Gas High Altitude (2001ft to 5000ft)	---	---	234-35928-43	234-35928-38	234-35928-38	234-35928-35		
	LP Gas High Altitude (5001ft to 8000ft)	---	---	234-35928-46	234-35928-42	234-35928-42	234-35928-39		
	LP Gas High Altitude (8001ft & above)	---	---	234-35928-47	234-35928-43	234-35928-43	234-35928-40		
37	Spring Washer	---	---	234-35928-48	234-35928-43	234-35928-43	234-35928-41		
38	Air Shutter	---	---	239-40729-00	239-40729-00	239-40729-00	239-40729-00		
39	LP Gas Pilot Assembly	---	---	239-35466-00	239-35466-00	239-35466-00	239-35466-00		
40	LP Gas Pilot Orifice	---	---	233-40261-02	233-40261-03	233-40261-03	233-40261-03		
41	LP Gas Cast Iron Burner	---	---	234-46502-01	234-46502-01	234-46502-01	234-46502-01		
42	Thermocouple	---	---	228-14173-00	228-14173-00	228-14173-00	228-14173-00		
	Kit-LP to NAT conversion (0ft to 2000ft)	233-46501-24	233-46501-24	233-46501-24	233-46501-24	233-46501-24	233-46501-24		
	Kit-LP to NAT conversion (2000ft to 5000ft)	---	---	265-45713-01	265-45713-01	265-45713-01	265-45713-01		
		---	---	265-45713-02	265-45713-02	265-45713-02	265-45713-02		

*Applies to all warranties
 **Ordering a complete burner assembly may increase delivery time. Please order the specific component required for the quickest delivery.
 ▲ Order with item 5
 ▲▲ Order with item 6

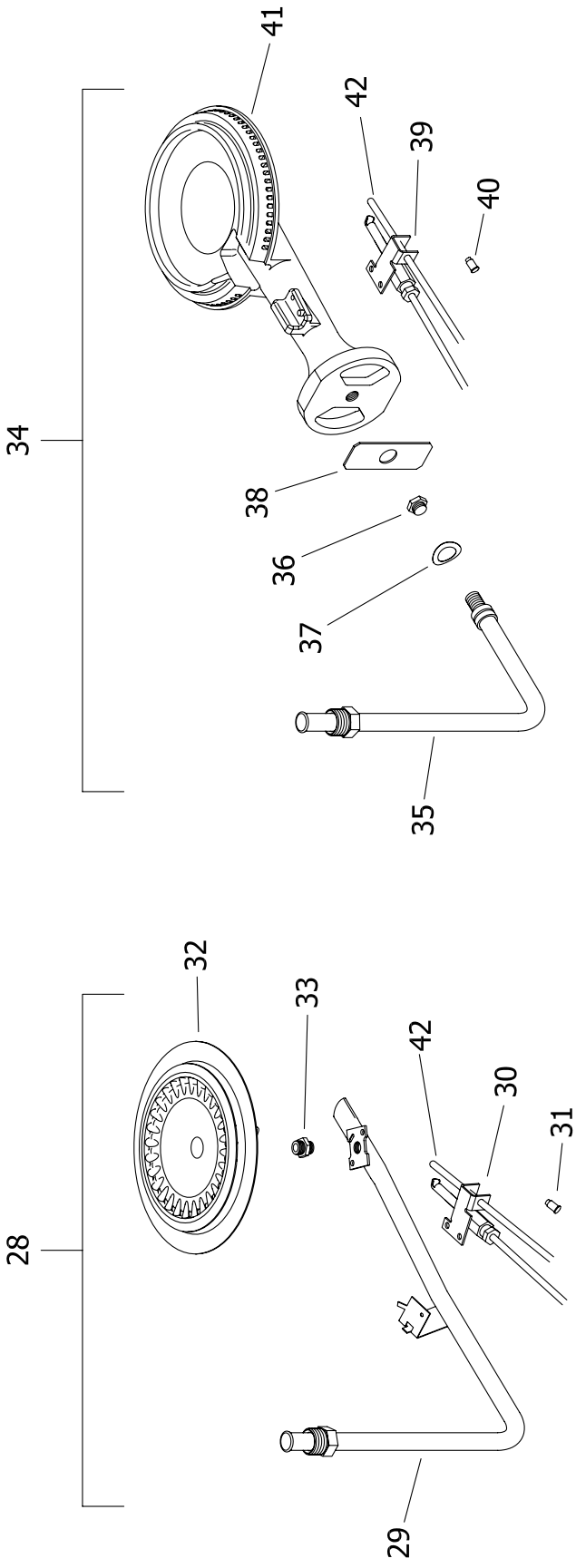




Item	Description	Model	Model	Model	Model	Model	Model
1	Draft Diverter	25X78B3N	55X80B3N	243-33081-02-20	243-33081-02-20	65T65*(B*N,X)	75T80*(B*N,X)
2	Flue Baffle	---	---	243-33081-02-20	243-44649-00	243-42557-00	243-33081-01-20
3	Flue Reducer	243-42572-00	243-42572-00	243-36920-00	243-36920-00	243-36920-00	243-36920-00
4	Flue Core	239-45676-00	239-45676-00	---	---	---	---
5	Heat Trap Insert (Outlet)	---	---	---	239-45167-00	---	---
6	Heat Trap Insert (Inlet)	---	---	---	239-45073-00	---	---
7	Hot Water Outlet Anode Magnesium ▲	224-32731-101	224-32731-101	224-32731-83	224-32731-83	---	---
	Aluminum ▲	224-32999-21	224-32999-21	224-32999-07	224-32999-07	---	---
	A420 Aluminum ▲	224-45147-02	224-45147-02	224-45147-01	224-45147-01	---	---
8	Plug type Anode Magnesium	224-32758-19	224-32758-19	---	224-32758-07	224-32999-30	224-32758-14
	Aluminum	224-32999-06	224-32999-06	---	229-39625-04	229-44700-05	224-32999-13
9	Cold Water Inlet Diptube Polypropylene ▲▲	229-45092-02	229-45092-02	229-39628-04	229-39628-04	229-43632-06	---
	Polysulfone (NC Code) ▲▲	---	---	---	---	---	---
	Stainless Steel	---	---	---	---	---	229-43193-00
10	T&P Relief Valve	230-40594-02	230-32920-01	230-32920-01	230-40594-02	230-40594-02	230-40594-02
11	3/4" NPT Plug	239-11638-00	239-11638-00	239-11638-00	239-11638-00	239-11638-00	239-11638-00
12	Combination Gas Valve Natural Gas	265-46365-06	265-46365-05	265-46365-01	265-46365-02	265-46365-02	265-46365-04
	Combination Gas Valve LP Gas	---	---	---	265-46366-01	265-46366-02	265-46366-04
13	Brass Drain Valve	265-42351-02	265-42351-02	265-42351-02	265-42351-02	265-42351-02	265-42351-04
14	Inner Door Complete	243-46049-00	243-46049-00	243-36739-02	243-39207-00	243-39207-00	243-39207-00
15	Outer Door	243-41061-00	243-41061-00	243-41061-00	243-37177-00	243-37177-00	243-37177-00
16	Hole Closure	239-31547-02	239-31547-02	239-31547-02	239-31547-02	239-31547-02	239-31547-02
17	Cleanout O-Ring Gasket	---	---	---	205-18427-00	205-18427-00	205-18427-00
18	Cleanout Cover	---	---	---	205-18428-00	205-18428-00	205-18428-00
19	Cleanout Cover Screw (Qty. 6)	---	---	---	239-82166-00	239-82166-00	239-82166-00
20	Cleanout Access Cover	---	---	---	243-20299-00	243-20299-00	243-20299-00
21	Integrated Mixing Device	239-46225-02	239-46225-02	---	---	---	---
22	Outlet Mixing Device	239-45631-00	239-45631-00	---	---	---	---
23	Flexible Connector	239-46347-01	239-46347-01	---	---	---	---
24	Inlet Tee	239-45632-00	239-45632-00	---	---	---	---
25	Mixing Device	---	---	239-43740-00	239-43740-00	239-43740-00	239-43740-00
26	Kit-Alternate Temperature Water Outlet	243-46414-02	243-46414-02	---	---	---	---
27	Street Tee 3/4" NPT	239-46332-00	239-46332-00	---	---	---	---

*Applies to all warranties
 **Ordering a complete burner assembly may increase delivery time. Please order the specific component required for the quickest delivery.
 ▲ Order with item 5
 ▲▲ Order with item 6

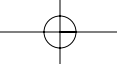




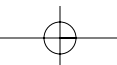
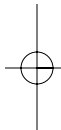
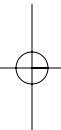
Item	Description	Model	Model	Model	Model	Model	Model
28	Nat. Gas Burner Assembly Complete **	25X78B3N	55X80B3N	65T65*(B*N,X)	75T80*(B*N,X)	100T88*(B*N,X)	
29	Nat. Gas Feedline	265-43660-13	265-43660-15	265-43957-05-27	265-43979-03-21	265-43979-01-20	
30	Nat. Gas Pilot Assembly	233-40248-02	233-40248-04	233-46502-03	233-40248-05	233-40248-05	
31	Nat. Gas Pilot Orifice	234-46502-03	234-46502-03	234-46502-03	234-46502-03	234-46502-03	
32	Nat. Gas BN Burner	228-42506-00	228-42506-00	228-42506-00	228-42506-00	228-42506-00	
33	Nat. Gas Main Burner Orifice (0ft to 2000ft)	234-41034-21	234-41034-20	234-41034-27	234-41034-21	234-41034-20	
	Nat. Gas High Altitude (2001ft to 5000ft)	234-41034-23	234-41034-22	234-41034-29	234-41034-23	234-41034-22	
	Nat. Gas High Altitude (5001ft to 8000ft)	234-41034-23	234-41034-22	234-41034-29	234-41034-23	234-41034-22	
	Nat. Gas High Altitude (8001ft & above)	234-41034-28	234-41034-27	234-41034-31	234-41034-28	234-41034-27	
34	LP Gas Cast Iron Burner Assembly Complete **	---	---	265-41876-29-43	265-41876-24-38	265-41876-27-35	
35	LP Gas Feedline	---	---	265-41818-14	265-41818-18	265-41818-16	
36	LP Gas Main Burner Orifice (0ft to 2000ft)	---	---	234-35928-43	234-35928-38	234-35928-35	
	LP Gas High Altitude (2001ft to 5000ft)	---	---	234-35928-44	234-35928-42	234-35928-39	
	LP Gas High Altitude (5001ft to 8000ft)	---	---	234-35928-47	234-35928-43	234-35928-40	
	LP Gas High Altitude (8001ft & above)	---	---	234-35928-48	234-35928-43	234-35928-41	
37	Spring Washer	---	---	239-40729-00	239-40729-00	239-40729-00	
38	Air Shutter	---	---	239-35466-00	239-35466-00	239-35466-00	
39	LP Gas Pilot Assembly	---	---	233-40261-02	233-40261-03	233-40261-03	
40	LP Gas Pilot Orifice	---	---	234-46502-01	234-46502-01	234-46502-01	
41	LP Gas Cast Iron Burner	---	---	228-14173-00	228-14173-00	228-14173-00	
42	Thermocouple	233-46501-24	233-46501-24	233-46501-24	233-46501-24	233-46501-24	
	Kit-LP to NAT conversion (0ft to 2000ft)	---	---	---	---	---	
	Kit-LP to NAT conversion (2000ft to 5000ft)	---	---	---	---	---	

*Applies to all warranties
 **Ordering a complete burner assembly may increase delivery time. Please order the specific component required for the quickest delivery.
 ▲ Order with item 5
 ▲▲ Order with item 6





NOTES



NOTES



For U.S. and Canada field service,
contact your professional installer or
local Bradford White sales representative.

Sales/800-523-2931
Fax/215-641-1670

Application & Sizing/800-523-2931
Fax/215-641-1612

Technical Support/800-334-3393
Fax/269-795-1089

Warranty/800-531-2111
Fax/269-795-1089

International:
Telephone/215-641-9400
Telefax/215-641-9750



Sales/Technical Support
866-690-0961
905-238-0100
Fax/905-238-0105

Email
parts@bradfordwhite.com
techserv@bradfordwhite.com

www.bradfordwhite.com
www.bradfordwhitecanada.com