

Installation Instructions for

EZROUTE™

NOTE:

It is possible to install both the supply and return of 1/2", 5/8" or 3/4" diameter tube, in one channel, for example, a 6 loop system only requires 6 channels.

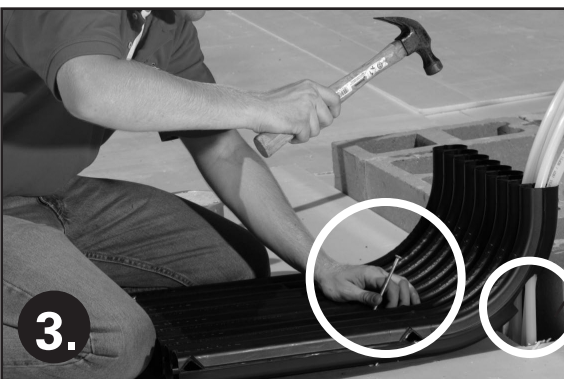
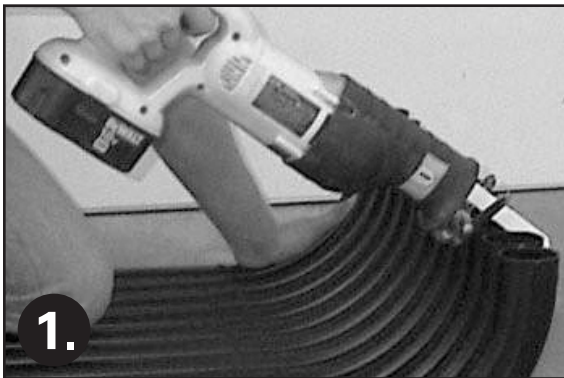
PRODUCTS

7101-01 Premier Product

7101-02 Straight Product

7101-03 Radius Product

7101-01-NP Nail Pack (packaged w/ Premier Product Only)



EZ ROUTE PREMIER 7101-01-IFU

Step 1: Using a utility knife or reciprocating saw, cut between the main channels to fit your job specifications (i.e. An 8 loop system would require you to cut off 4 channels from a new 12 channel EZ Route Premier Base, using the remainder for your next job).

Step 2: Using a 1/4" drill bit, bore holes in front of at least two of the front guides and two of the back guides. You can see these located in the photo #2. You'll want to have at least 4 stake down points on the base.

Step 3: Set the unit in place and secure using supplied 8" spikes (part 7101-01-NP). Drive spikes, at the appropriate angles as indicated, through the previously drilled holes. When running tube through the EZ Route Premier it is recommended that the installer place one foot on the unit. This will aid in keeping the structure in good contact with the ground and minimize any shifting due to the spikes loosening. You can begin running your tubes.

Notice in this picture that by cutting the back-underside of the Premier, you have the option to run lines from other directions.

Note: There are 8 8" spikes provided, we anticipate you will not use all the channels and spikes on one job, therefore, you would have all of the needed materials for your next job.

For more installation tips and detailed photo examples, please visit our website at www.TheEZRoute.com



EZ ROUTE **RADIUS** 7101-03-IFU

Slab Installation Instructions

Step 1: Using a utility knife or reciprocating saw, cut between the main channels to fit your job specifications. (See photo #1 under the Premier for an example).

Step 2: Acquire a piece of 1/4" or 1/2" plywood or OSB, cutting a piece big enough to secure the EZ Route Radius to (i.e. for a 6 loop system a piece 12" by 18" would be adequate for that application).

Step 3: Secure the EZ Route Radius on the plywood by using 3/4" long sheet metal or drywall screws. Drive screws in at least two of the dimpled areas as indicated (see photo to left). Make sure the screw head is seated firmly down into the dimpled area.

Step 4: Set the plywood with the EZ Route Radius attached in the desired location and drill 4 holes (one at each corner of the plywood). Using 6" or 8" spikes (*not provided*) secure to the ground by driving them at opposing 45° Angles. You can see an example of the angle in the bottom photo of the Premier section on the front side of this instruction sheet.

Step 5: You can now begin running your tubes/lines. (Keep in mind you can run the supply and return in one channel).

Notice: As illustrated in picture #3 in the Premier instructions on the opposite side of this sheet it is also possible to cut the back underside of the EZ Route Radius to allow tubes to be ran from other directions.

Floor Joist or Truss Installation Instructions

Step 1: Same as steps 1 above.

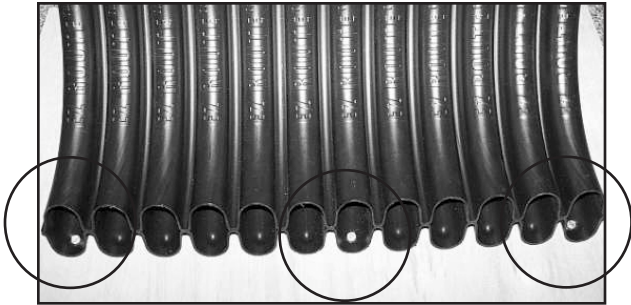
Step 2: When installing the Radius only product in floor joists or trusses, you will notice that the top and bottom ends of the Radius are cut at 15° angles for accessibility and that the dimples are exposed to allow you to drive the screws straight. This will also allow you to install the unit either on a top or bottom rail of a floor truss.

Step 3: Once you have positioned the EZ Route Radius you may begin installing your tubes.

EZ ROUTE **STRAIGHT** 7101-02-IFU

Step 1: Using a utility knife or reciprocating saw, cut between the main channels to fit your job specifications.

Step 2: Once your base is secured and all your tubes are run, slide the EZ Route straight down over the tubes with the flared channel facing the back. It is recommended that you leave at least 12" to 18" of tube above the EZ Route straight to allow your manifolds to be installed easily. You can use the Straight with both the Premier and Radius products.



Example of (3) screws, in the dimples, securing the EZ Route Radius to the plywood.



For more installation tips and detailed photo examples, please visit our website at www.TheEZRoute.com

(715) 453-1111 • EZ Route LLC, N-10926 County Road A, Tomahawk, WI 54487

Copyright © 2008 EZ Route LLC, US and Foreign Patent Pending