

Installation

Bradley ADA Compliant 1WCA-ADA Wall Shower with

Equa-Flo™

TMV

Equa-Flow HD

AST

Infrared Control

Single Valve w/ Lever Handle

Touch-Time™

Table of Contents

Pre-Installation Information	2
Dimensions	2
Installation Instructions	3-4
Cleaning Instructions	4

IMPORTANT

Read the entire installation manual to ensure proper installation of your shower.

Check local codes and ordinances in your area for proper location and connection requirements. Conformity to local codes is the responsibility of the installer.

This installation manual and parts list should be filed by the building owner's maintenance department.

Product warranties and parts information may also be found under "Products" on our web site at www.bradleycorp.com.

See separate installation sheets for information on the Wall Shower Diverter Valve Service Parts (215-1369-3a) and Shower Hose Spray Repair Parts (215-1369-30).

Pre-Installation Information

Supplies required for installation:

- Water supply piping to connect 1/2" NPT flexible hoses
- Wall anchors and 1/4" diameter bolts for mounting top and bottom covers to wall
- Teflon tape or Teflon pipe dope
- 110/24 VAC Class II transformer (optional, available from Bradley) (TouchTime and Infrared Control models only)
- 110 VAC power source for 24 VAC Class II transformer (TouchTime and Infrared Control models only)
- 1/4" bolts for securing shroud components to wall (optional)

Overview

The 1WCA-ADA Shower comes with your choice of valve: TMV, EquaFlo HD, AST, TouchTime, EquaFlo, Infrared Control, or Single Valve with lever handle.

Components

Material: The shower body is constructed of 18 gauge, type 304 polished stainless steel. The shower caps are constructed of 16 gauge stainless steel.

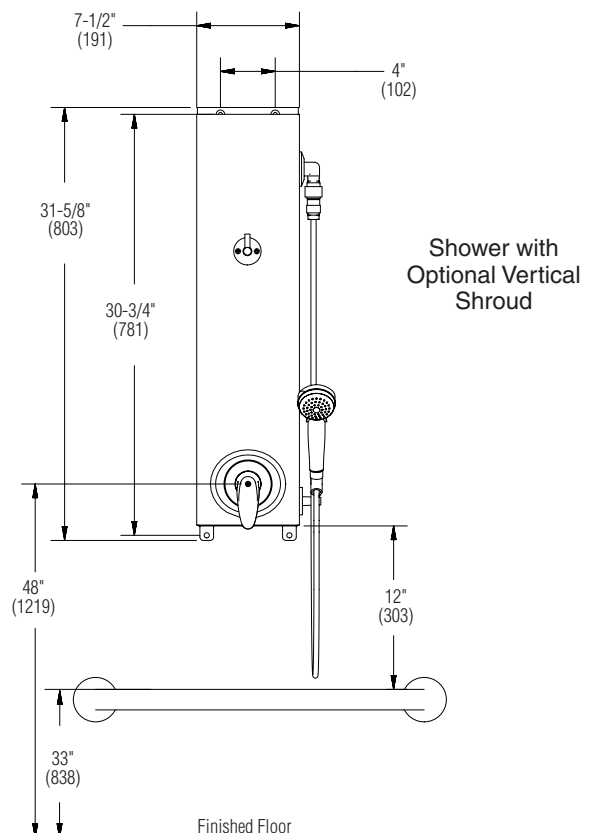
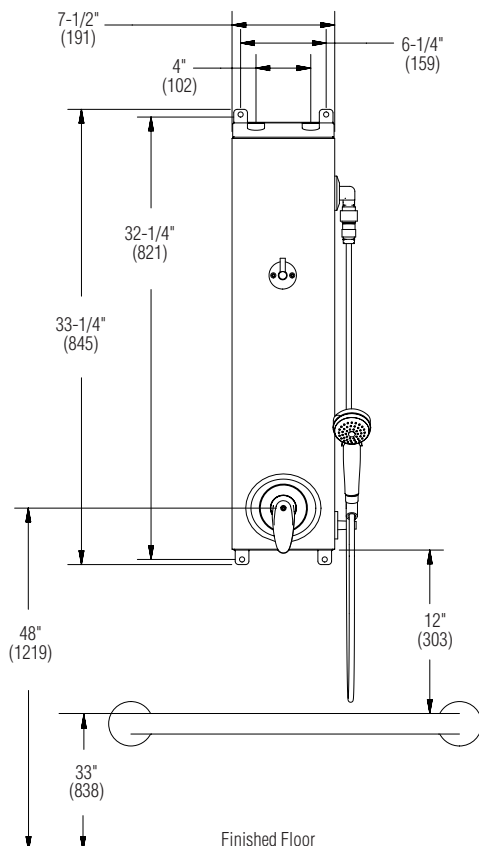
Supply Inlets: Supply inlets are 1/2" NPT flexible hose and are accessible through the back of the shower or through knockouts on top shower cap.

Shower Spray Hose: The spray hose can be hand-held or mounted on the post on the shower body or optional slide bar. The 60" (1524 mm) flexible spray hose is made of stainless steel.

Dimensions



Compliance and conformity to local codes and ordinance is the responsibility of the installer.



Installation



Flush the supply lines before making connections.



Supply inlets are 1/2" NPT flexible hose and are accessible through the back of shower or through knockouts on the top cap of shower.

Step 1: Rough in piping

1. Rough-in the supply piping as required for your installation.

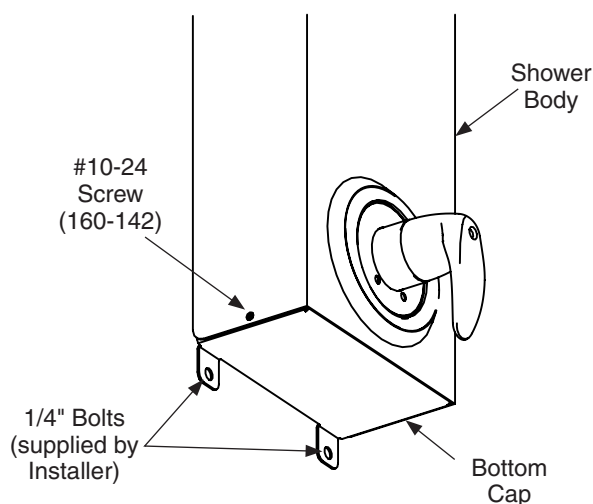
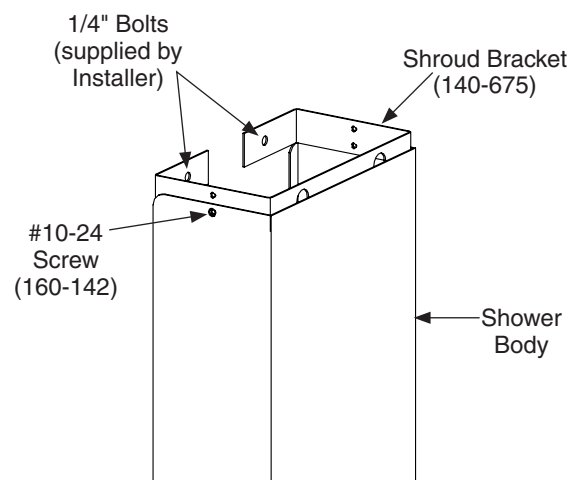
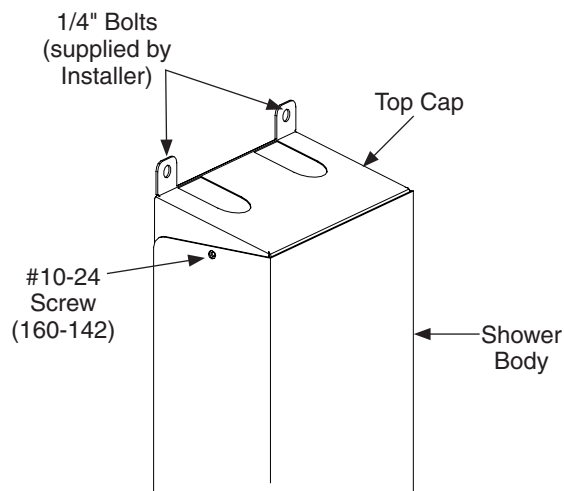
Step 2: Install Shower

2. **For showers without optional shroud:** Position the top cap of the shower on the wall and mark the bolt hole locations on the wall.
For showers with optional shroud: Position the shroud bracket on the wall, level and mark the bolt hole locations on the wall.
3. Install wall anchors (supplied by installer) for 1/4" bolts at the marked anchor hole locations.
4. Secure the top cap/shroud bracket to the wall anchors with 1/4" bolts (supplied by installer)
5. Connect the 1/2" flexible hose on the back of the shower to the supply piping (piping supplied by installer). Supplies can be brought in through a knockout access hole on the top cap.



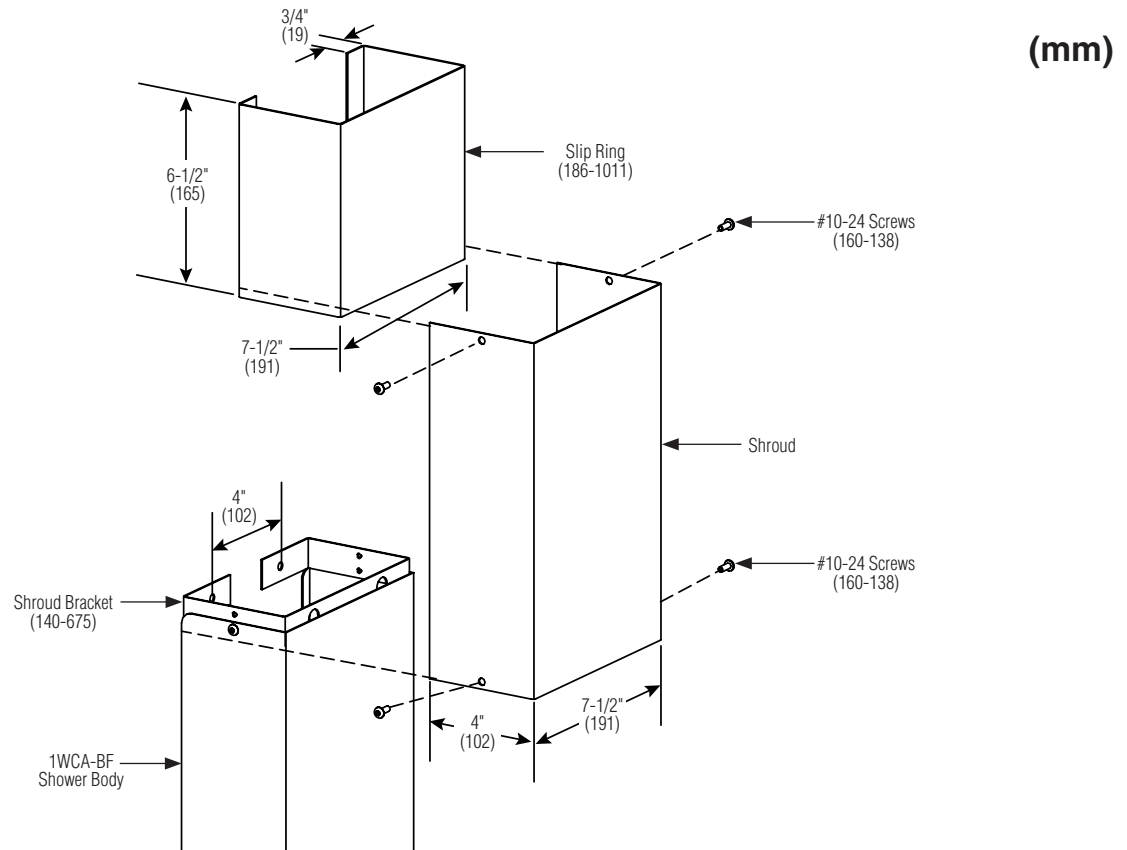
For 1WCA-ADA models with Infrared Control or TouchTime valves, refer to installation manual 215-1369-12 to make electrical connections before continuing with installation.

6. Place body of shower over top cap. For showers with optional shroud: attach shower body to shroud bracket instead of top cap.
7. Line up screw holes on top cap and shower body and attach shower body to top cap with #10-24 screws (provided).
8. Position bottom cap in shower body and attach bottom cap to shower body with #10-24 screws (provided).
9. Secure bottom cap to wall with 1/4" bolts (supplied by installer).
10. Turn on water to the unit to test the shower.



Vertical Shroud Installation (Optional)

1. Position the slip ring against the ceiling and in line with the shroud bracket mounted on the wall.
2. With the bracket and slip ring secured, position the shroud in place and secure the shroud to the shroud bracket with the screws provided.
3. Using the holes at the top of the shroud as a template, drill and tap #10-24 holes into the slip ring.
4. Secure the shroud to the slip ring with the #10-24 screws provided.



Horizontal Shroud Installation (Optional)



Refer to installation sheet 215-970 for instructions on installing the optional horizontal shroud.

Cleaning Instructions



Cleanliness is of utmost importance. Do not permit salty solutions to evaporate and dry on stainless steel. Never use ordinary steel wool or steel brushes on stainless steel. Always use stainless steel wool or stainless steel brushes.

1. Remove ordinary deposits of dirt and grease with soap and water. Whenever possible, the metal should be thoroughly rinsed and dried after washing.
2. Use stainless steel polishing powder to get rid of tightly adhering deposits.
3. Look for the source of the rust in some iron or steel not actually a part of the stainless steel structure. Sometimes the appearance of rust streaks on stainless steel leads to the belief that the stainless steel is rusting. A steel nail or screw may be the cause of the trouble.
4. If the showerhead delivers an uneven spray, remove the showerhead from the unit, disassemble, and remove foreign matter.
5. Reassemble showerhead and reinstall into unit.