

Installation Instructions

1 WCA Wall Showers with

- Equa Flo™
- Touch'N-Flo™
- Micro-Touch™
- Thermostatic Control
- Presto Meter Mix™
- Accu-Zone™
- Touch Time™ or
- Touch Time™ w/Battery

Table of Contents

Pre-Installation Information	2
1WCA Wall Shower Illustrations	3
Installation Instructions	4-5
Optional Vertical Shroud Installation	6
Optional Horizontal Shroud Installation	7
Cleaning Instructions	8
Presto Meter-Mix Valve	8
Thermostatic Mixing Valve	9



IMPORTANT

Read the entire installation instructions to ensure proper installation of your 1WCA shower.

Plumbing contractor shall be responsible for installing shower face plate at the correct height to meet accessibility requirements.

This installation manual and parts list should be filed by the owner's maintenance department.



P.O. Box 309, Menomonee Falls, WI 53052-0309
 TEL. 1-800-BRADLEY FAX (262) 251-5817
<http://www.bradleycorp.com>

Pre-Installation Information



CAUTION: This shower system may not protect the user from scalding if other temperature controlling devices in the plumbing system should fail.



CAUTION: Excessive heat to the Equa-Flo valve body will damage its internal parts.

Overview

The Bradley 1WCA Wall Shower is compact, with fixed adjustable spray, and can be installed at any height (see recommended heights below).

NOTE: Always check local codes for dimensional compliance.

Age	Male	Female
Adult	6'-0" (1.83m)	5'-6" (1.68m)
Teenage	6'-0" (1.83m)	5'-6" (1.68m)
Pre-teen	5'-6" (1.68m)	5'-6" (1.68m)

Components

Material: The shower body and shower caps are constructed of stainless steel.

Supply Inlets: Supply inlets are 1/2" NPT flexible hose and are accessible through the back of the shower or through the knockouts on the shower caps.

Supplies required for installation:

- Water supply piping to connect 1/2" NPT flexible hoses
- Wall anchors and 1/4" diameter bolts to mount top and bottom covers to wall
- 110 VAC power source for 24 VAC Class II transformer (for Micro-Touch™, Touch Time™ and Accu Zone™ models only)
- 110/24 VAC Class II transformer (available from Bradley as an option) for Micro-Touch™, Touch Time™ and Accu Zone™ models only)
- OPTIONAL: 1/4" bolts for securing shroud components to wall

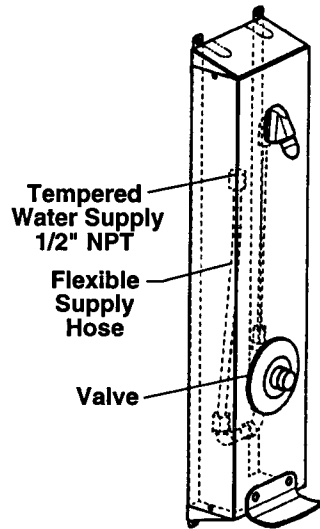
Bradley Barrier-Free 1WCA-ADA Wall Shower Warranty

Bradley Corporation warrants to commercial and institutional purchasers only each unit free from defects in material and workmanship under normal use and service upon the following terms and conditions:

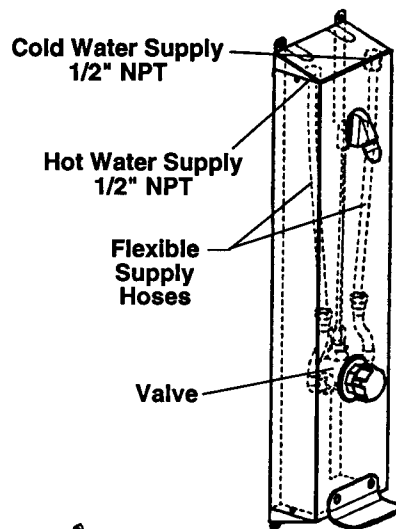
1. This warranty is limited to replacing or repairing, at our option, transportation charges prepaid by the purchaser, any Bradley unit or part thereof which our inspection shall show to have been defective within the limitations of this warranty.
2. The period during which Wall Shower components are warranted is one (1) year, measured from the date of our invoice.
3. This warranty does not cover installation or any other labor charges and does not apply to any units which have been damaged by accident, abuse, improper installation or improper maintenance.
4. The replacement or repair of defective units as stated in this warranty shall constitute the sole remedy of the purchaser and the sole liability of Bradley Corporation under this warranty. Bradley Corporation shall not otherwise be liable under any circumstances for incidental, consequential or indirect damages caused by defects in the repair or replacement thereof.
5. This warranty extends only to commercial and institutional purchasers and does not extend to any others, including consumer customers of commercial and institutional purchasers.
6. This warranty is in lieu of all other warranties, express or implied, including any implied warranty of merchantability or fitness for a particular purpose or otherwise.

1WCA Wall Shower Illustrations

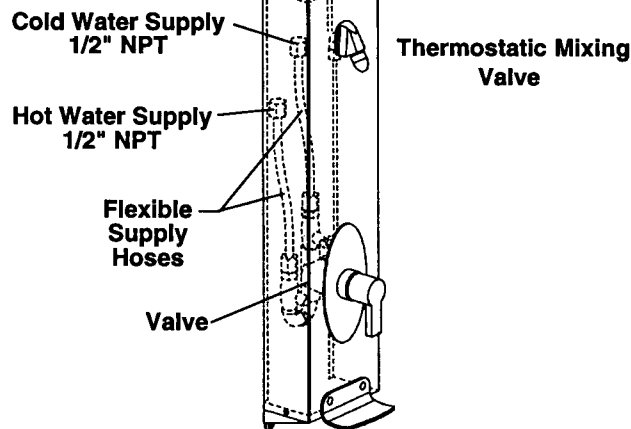
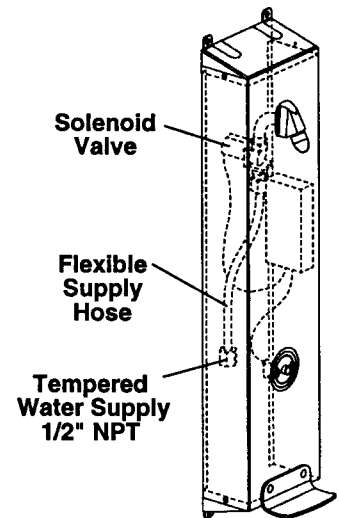
Presto Metering Valve



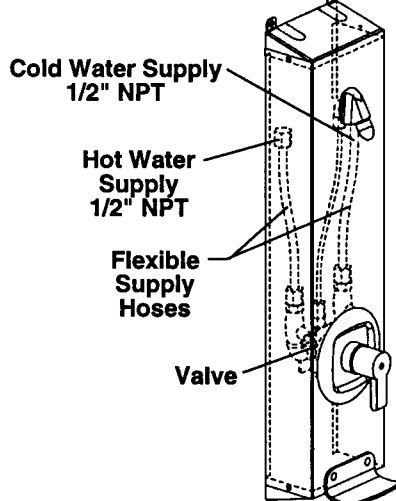
Presto Meter-Mix Valve



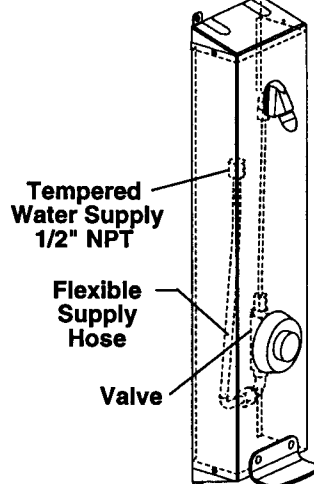
Micro-Touch™,
Touch Time™ and
Touch Time™ w/Battery



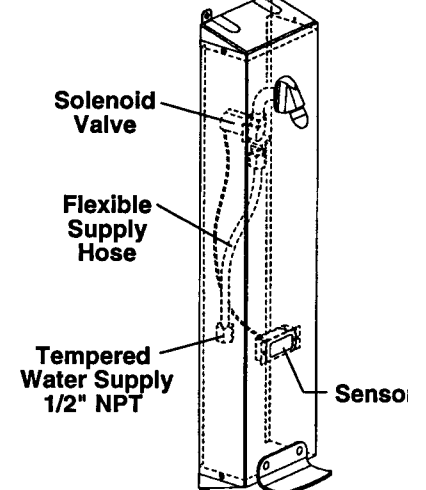
Equa-Flo™ Valve



Touch'N Flo™ Valve



Accu-Zone™



Installation Instructions

Step 1: Rough in piping for shower

NOTE: Flush the supply lines before making connections.

NOTE: When facing the wall, the supply pipe to the left of the centerline is HOT.

1. Rough-in supply piping as required for your installation (see Figure 1 for shower dimensions).

NOTE: Supply inlets are 1/2" NPT flexible hose and are accessible through the back of the shower or through knockouts on top (or bottom) caps of shower.

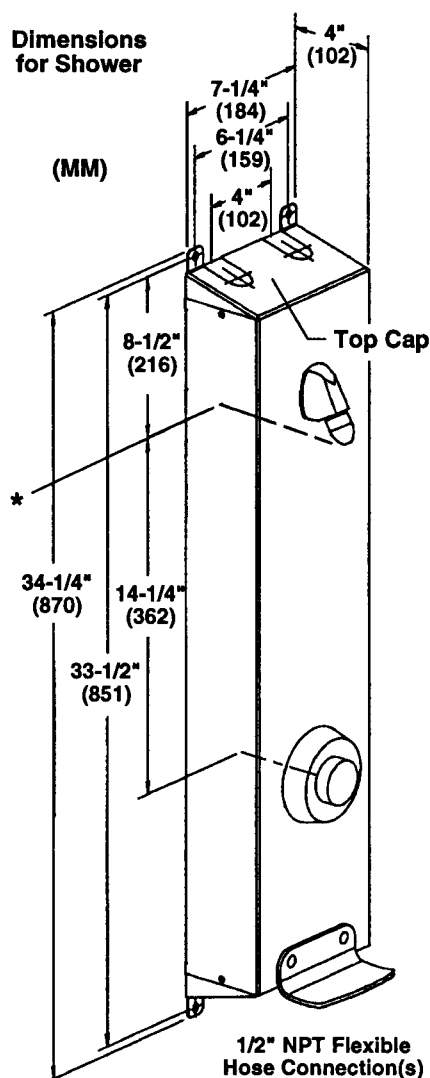
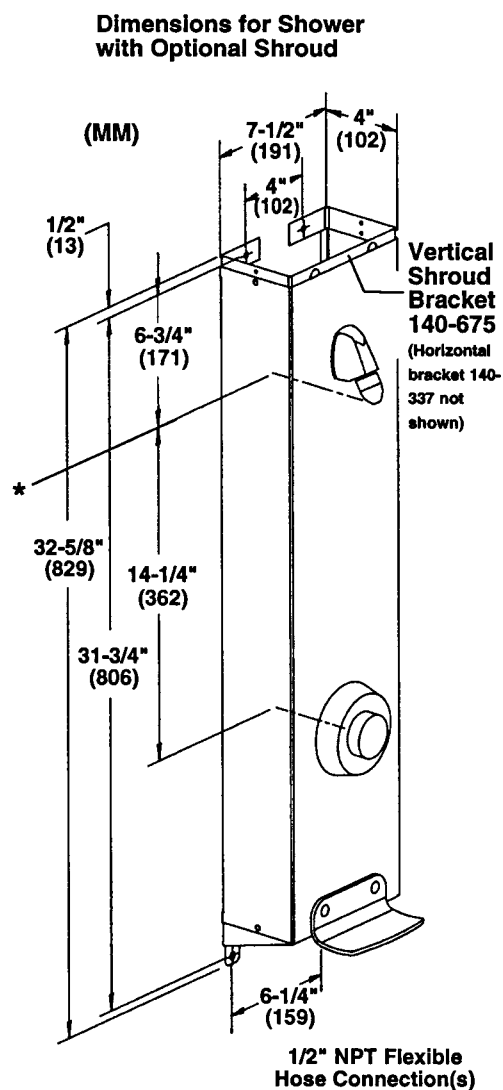


Figure 1



Installation Instructions *continued...*

Step 2: Install shower cap/shroud

1. **FOR SHOWERS WITHOUT OPTIONAL SHROUD:** Position the top cap of the shower on the wall, level, and mark the bolt hole locations on the wall (see Figure 1 on page 3).

FOR SHOWERS WITH OPTIONAL SHROUD: Position the shroud bracket on the wall, level, and mark the bolt hole locations on the wall (see Figure 1 on page 3).

2. Install wall anchors (supplied by installer) for 1/4" bolts at the anchor hole locations marked in procedure #1 above.
3. Secure the top cap/shroud bracket to the wall anchors installed in procedure #2 above with 1/4" bolts (supplied by installer).

Step 3: Make plumbing connections

NOTE: Hoses need to be connected to 1/2" IPS pipe stubs before the shower is fastened to the wall.

1. Connect the 1/2" NPT flexible hose(s) on back of the shower to the supply piping (piping supplied by installer). Supplies can be brought in through the wall in back of the shower or through a knockout access hole on the top or bottom caps.

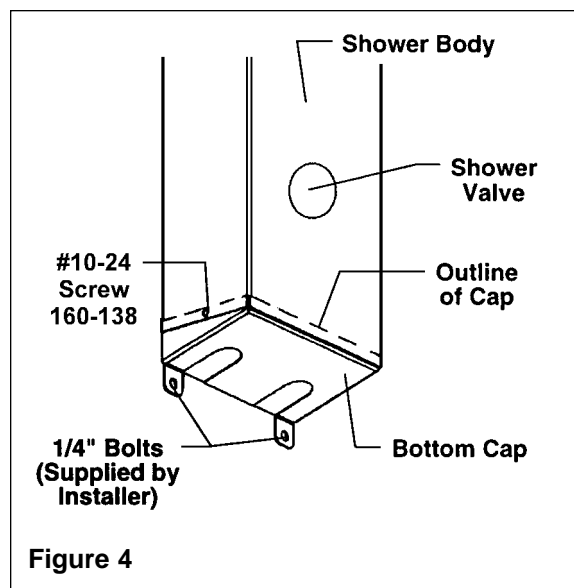
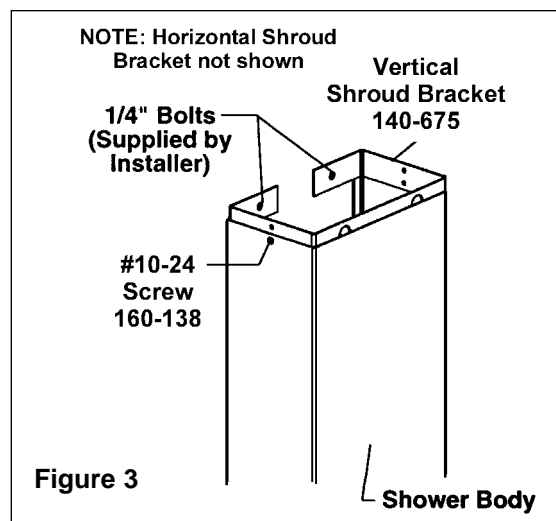
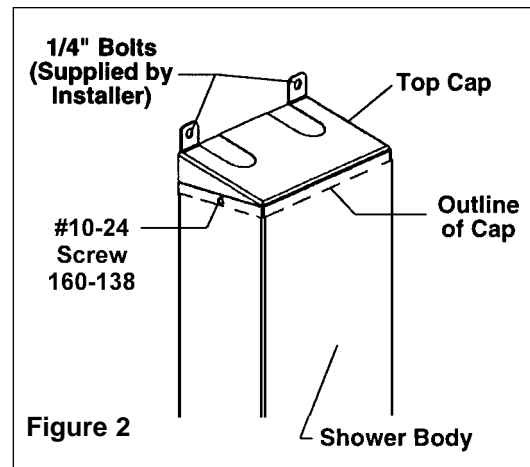
Step 4: Install shower body

NOTE: For 1WCA Shower Models with Accu-Zone™, Micro-Touch™ or Touch Time™, refer to installation manual 215-925 to make electrical connections before continuing with Step 4.

1. Place the body of the shower over the top cap as shown in Figure 2.

NOTE: For showers with shroud, attach the shower body to the shroud bracket instead of top cap (see Figure 3).

2. Line up the screw holes on the top cap and the shower body and attach the shower body to the cap with the #10-24 screws provided (Figure 2).
3. Position the bottom cap in the shower body as shown in Figure 4 and attach the bottom cap to the shower body with the #10-24 screws provided.
4. Secure the bottom cap to the wall with 1/4" bolts (supplied by installer) (see Figure 4).
5. Turn the water on to the unit and test for leaks and adequate water flow.



Installation Instructions *continued...*

Vertical Shroud Installation (optional)

1. Position the slip ring against the ceiling and in line with the shroud bracket mounted on the wall (see Figure 5). Secure the slip ring to the wall with 1/4" bolts (supplied by installer).
2. With the bracket and slip ring secured, position the shroud in place and secure the shroud to the shroud bracket with the screws provided (see Figure 5).
3. Using the holes at the top of the shroud as a template, drill and tap #10-24 holes in the slip ring.
4. Secure the shroud to the slip ring with the #10-24 screws provided (see Figure 5).

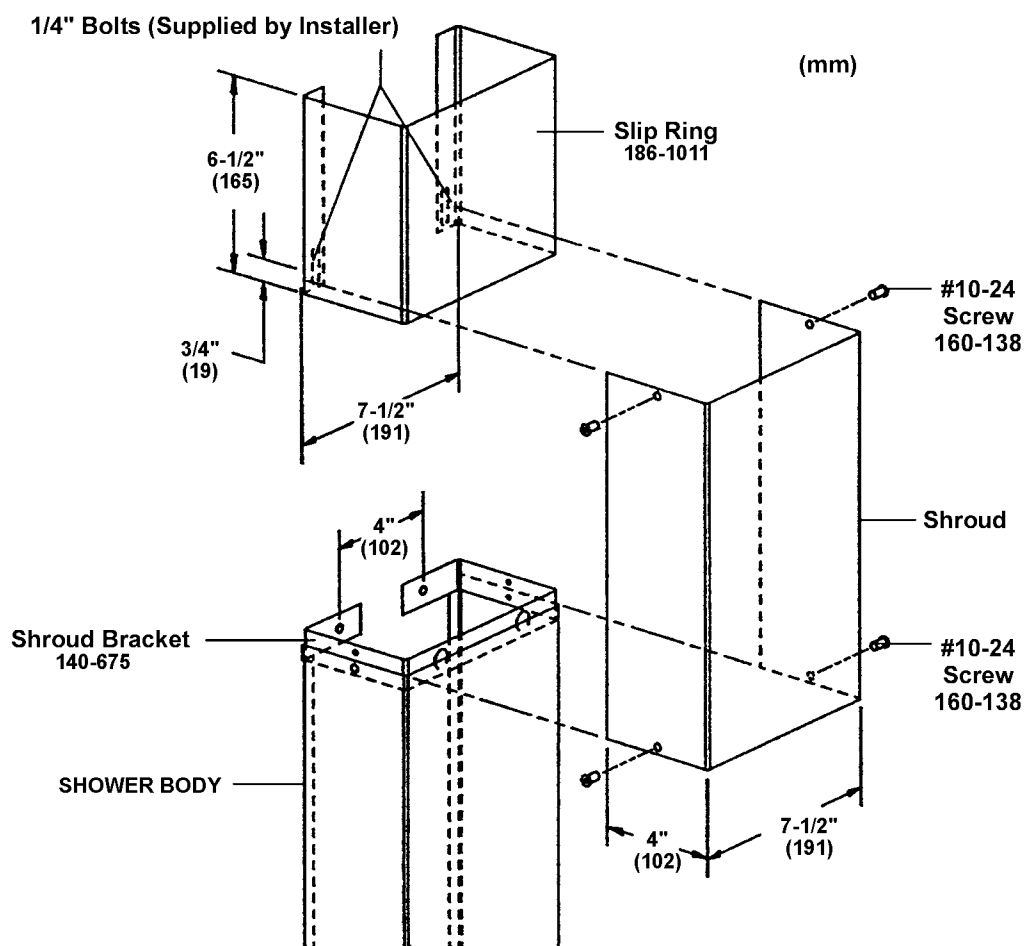


Figure 5

Installation Instructions *continued...*

Horizontal Shroud Installation

NOTE: Refer to Figure 6 when installing vertical shroud.

1. Position the bracket in place on the wall where desired.
2. Secure the bracket to the wall with 1/4" diameter screws (supplied by installer)..
3. Position the shroud in place over the bracket.
4. Secure the shroud to the bracket with the #10-24 x 12 screws provided.
5. Position the slip ring on the wall, and then using the shroud as a template, drill and tap #10-24 holes in the slip ring with a .149 drill bit.
6. Secure the slip ring to the wall with 1/4" diameter screws (supplied by installer).
7. Secure the shroud to the slip ring with the #10-24 x 12 screws provided.

NOTE: Shroud mounting holes may be punched into the front face of the shroud.

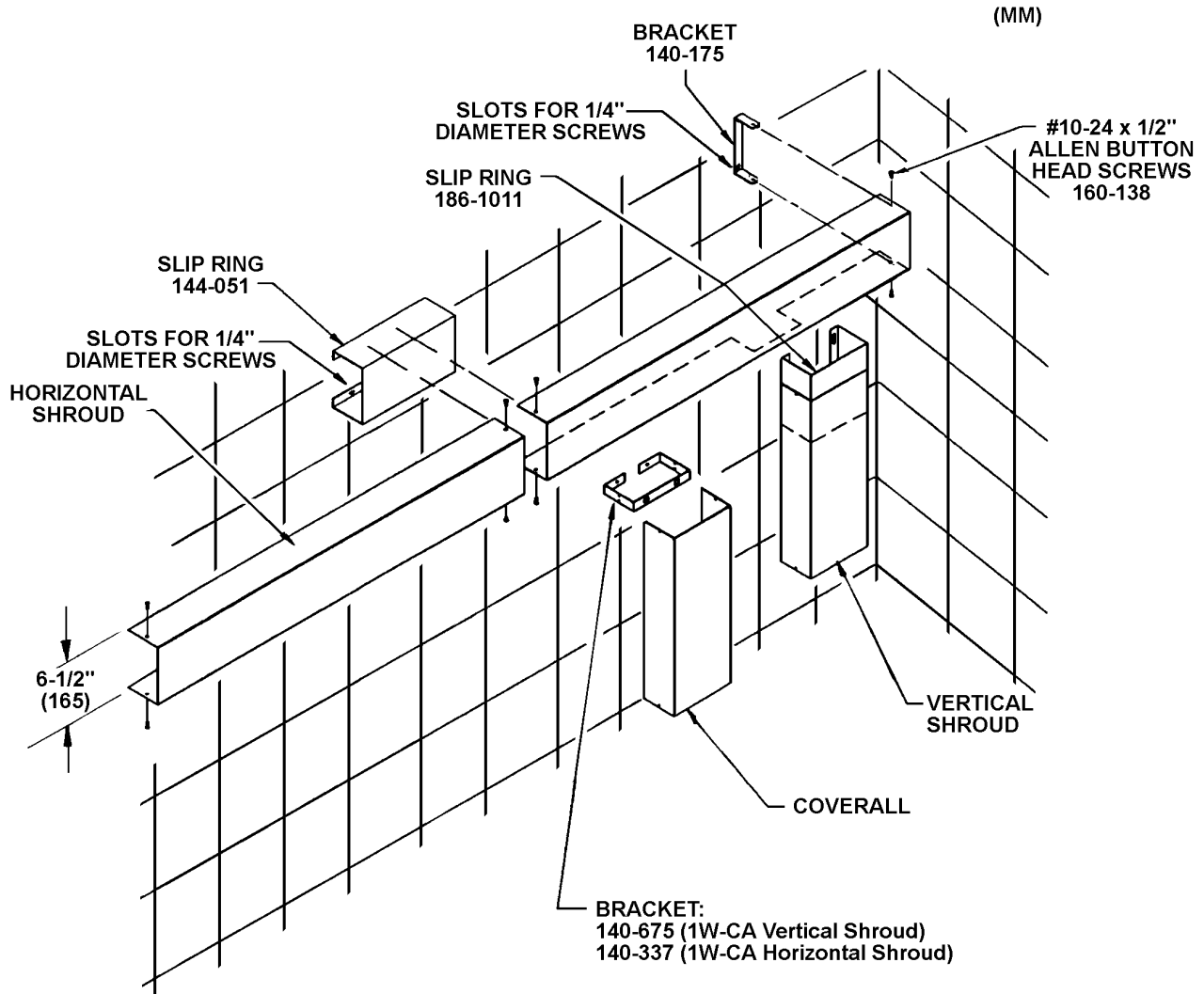


Figure 6

Cleaning Instructions



IMPORTANT: Cleanliness is of utmost importance. Do not permit salty solutions to evaporate and dry on stainless steel. Never use ordinary steel wool or steel brushes on stainless steel. Always use stainless steel wool or stainless steel brushes.

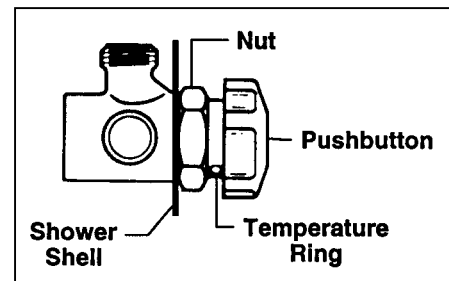
1. Remove ordinary deposits of dirt and grease with soap and water. Whenever possible, the metal should be thoroughly rinsed and dried after washing.
2. Use stainless steel polishing powder to get rid of tightly adhering deposits.
3. Look for the source of the rust in some iron or steel not actually a part of the stainless steel structure. Sometimes the appearance of rust streaks on stainless steel leads to the belief that the stainless steel is rusting. A steel nail or screw may be the cause of the trouble.
4. If the showerhead delivers an uneven spray, remove the showerhead from the unit, disassemble, and remove foreign matter.
5. Reassemble showerhead and reinstall into unit.

Presto Meter-Mix Temperature Adjustment

A safety stop that the shower user cannot move enables the installer to limit the warm water temperature at 104°F (40°C) in full open position.

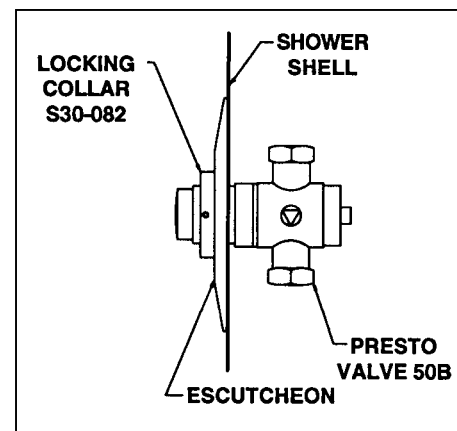
To adjust the water temperature complete the following (refer to the figure shown):

1. Unscrew the nut on the valve enough to enable adjustment of the temperature ring.
2. With a Phillips screwdriver, turn the temperature ring clockwise to decrease water temperature; counter-clockwise to increase water temperature.
3. Re-tighten the nut on the valve when temperature adjustment is complete.

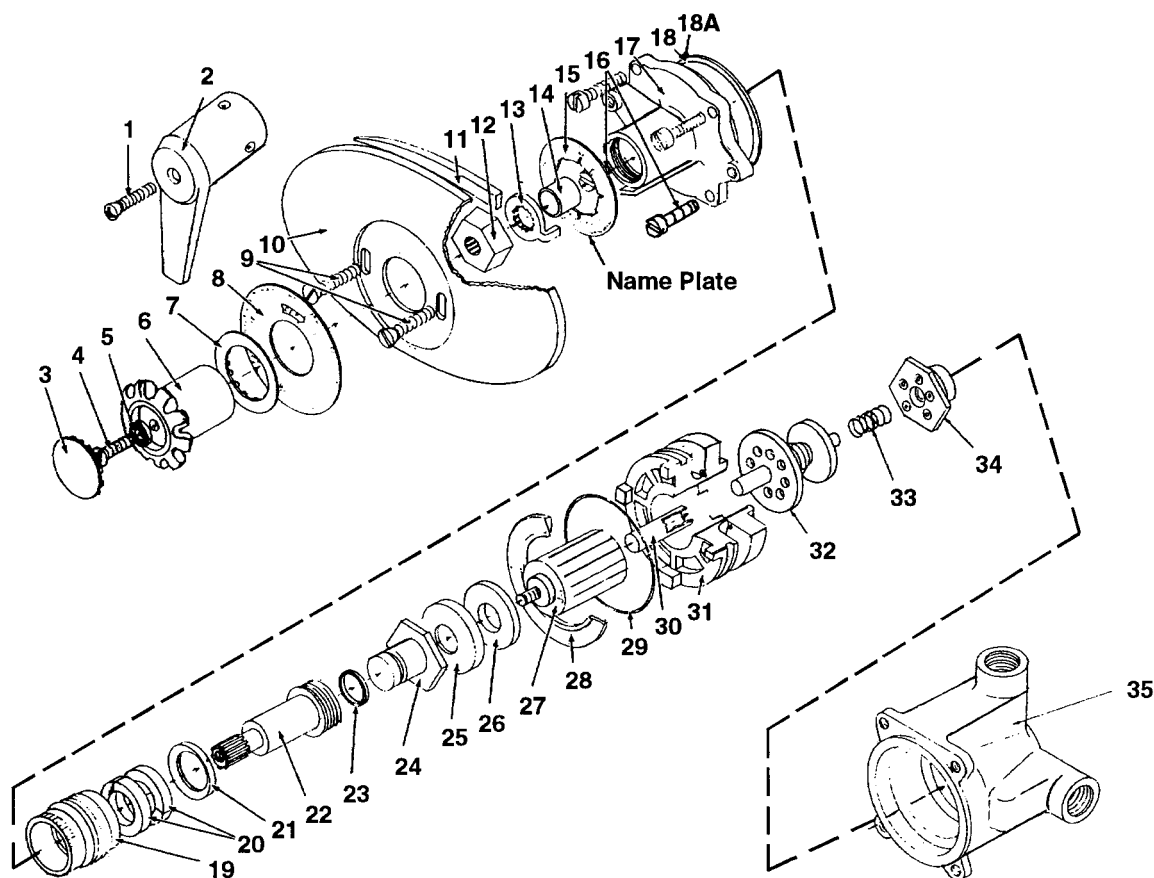


Presto Valves Part Numbers

Valve	Part Number
Presto Meter-Mix Valve	269-160
Presto Metering Valve	269-161 (see illustration at right)



Thermostatic Mixing Valve Repair Parts



No.	Description	No.	Description	No.	Description	No.	Description
1	Screw	10	Dial Plate	18A	Bonnet O-Ring	27	Thermal Motor
2	Lever Handle Assembly	11	Gasket	19	Packing Gland	28	Spacer Ring
3	Plug Button	12	Handle Adaptor	20	Packing Rings	29	Combination Seat O-Ring
4	Screw	13	Temperature Stop	21	Packing Stop Ring	30	Motor Sleeve
5	Washer	14	Spacer Sleeve	22	Adjustable Stem	31	Combination Seat
6	Handle	15	Identification Tag	23	Motor Quad Ring	32	Valve Assembly
7	Retainer	16	Screws	24	Shut-Off Disc Nut	33	Valve Return Spring
8	Dial Insert	17	Bonnet	25	Shut-Off Disc Retainer	34	Hot Water Seat
9	Screw	18	Bonnet Gasket	26	Shut-Off Disc	35	Body Port

Figures courtesy of MCC Powers Process Controls, Skokie, Illinois