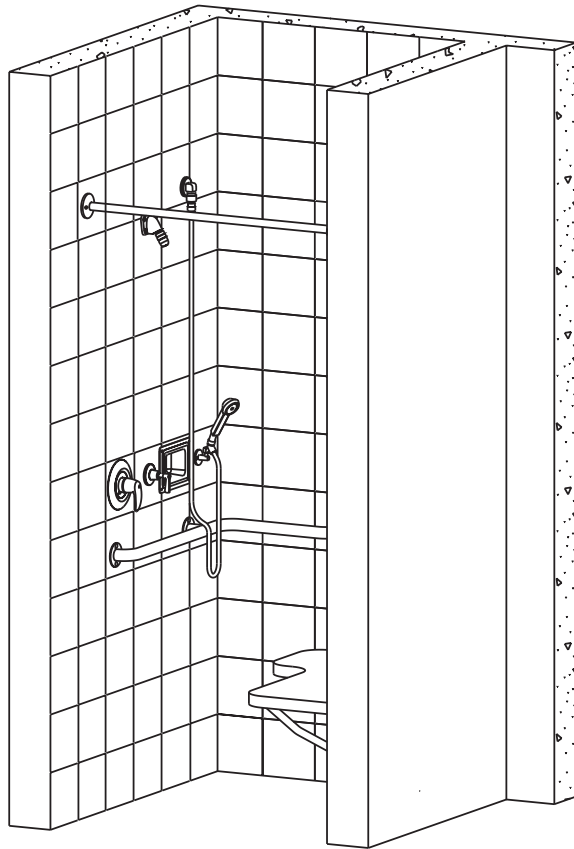


Installation and Maintenance Instructions

Bradley Barrier-Free HN-300 In-Wall Shower



HN-300 Valve Left/Seat Right Shown

Table of Contents

Pre-Installation Information	2
Warranty	2
Components and Shower Stall Dimensions ...	3
Installation Instructions	4-10
Cleaning Instructions	10
Shower Seat Repair Parts	10
Diverter Valve Repair Parts	11
HN-300 Shower Components Repair Parts ...	12
Shower Curtain Repair Parts	12



IMPORTANT

This shower system may not protect the user from scalding when there is a failure of other temperature-controlling devices elsewhere in the plumbing system.

Installation of the HN300 shower is shown in this document using Bradley's Equa-Flo valve. Please refer to the instruction sheet supplied with the actual valve you have ordered for further rough-in and installation information.

Read the entire installation instructions to ensure proper installation of your HN-300 shower.

This manual covers all of the HN-300 variations and options available, including shower seat and curtain installation. Simply omit the steps which do not apply to the unit you are installing.

Valve Left/Seat Right version is shown throughout this manual. Valve Right/Seat Left is opposite.

Plumbing contractor shall be responsible for installing shower control panel at the correct height to meet accessibility requirements.

Check the local codes and ordinances in your area for proper location and connection requirements. Conformity to local codes is the responsibility of the installer.

Read and save this installation manual, which contains maintenance and repair information, for future reference.



P.O. Box 309, Menomonee Falls, WI 53052-0309
Phone (262) 251-6000 Fax (262) 251-5817
<http://www.bradleycorp.com>

Pre-Installation Information

Overview

The Bradley Barrier-Free HN-300 Shower is an ideal solution to barrier-free shower room design. The HN-300 blends in well with other wet tile shower fixtures — avoiding any connotation of a “special” handicapped unit. HN-300 components are furnished unassembled for job site installation. Particular care must be taken by the contractor for proper placement of the shower components. When installed properly in a 36" x 36" shower stall, the HN-300 provides a shower stall which meets barrier-free accessibility codes. (Always check local codes for compliance.)

Components

Material: All exposed parts (except seat cover) are stainless steel or polished chrome-plated brass. Valve bodies are brass.

Supplies required for installation:

- 1/2" NPT hot and cold water supplies
- 1/2" NPT brass pipe plug for Equa-Flo™, Thermostatic Mixing valves ONLY
- Piping to shower components (piping to be supplied by installer indicated on rough-in drawing on page 6)
- Materials to finish wall
- (2) wall anchors for #10-24 screws for wall bracket
- (4) wall anchors for 1/4"-20 x 1-1/4" flat socket head machine screws
- (6) 1/4"-20 x 1-1/4" machine anchors and screws to mount grab bar
- (7) wall anchors for 1/4" x 2" Type AB sheet metal screws to mount shower seat

Bradley Barrier-Free HN-300 In-Wall Shower Warranty

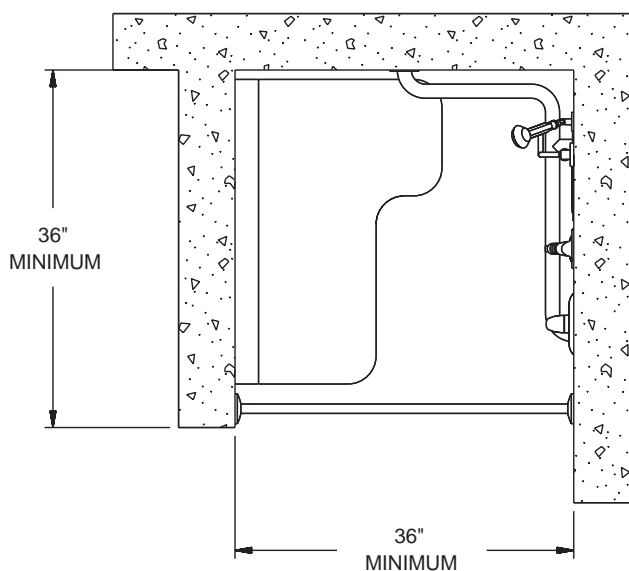
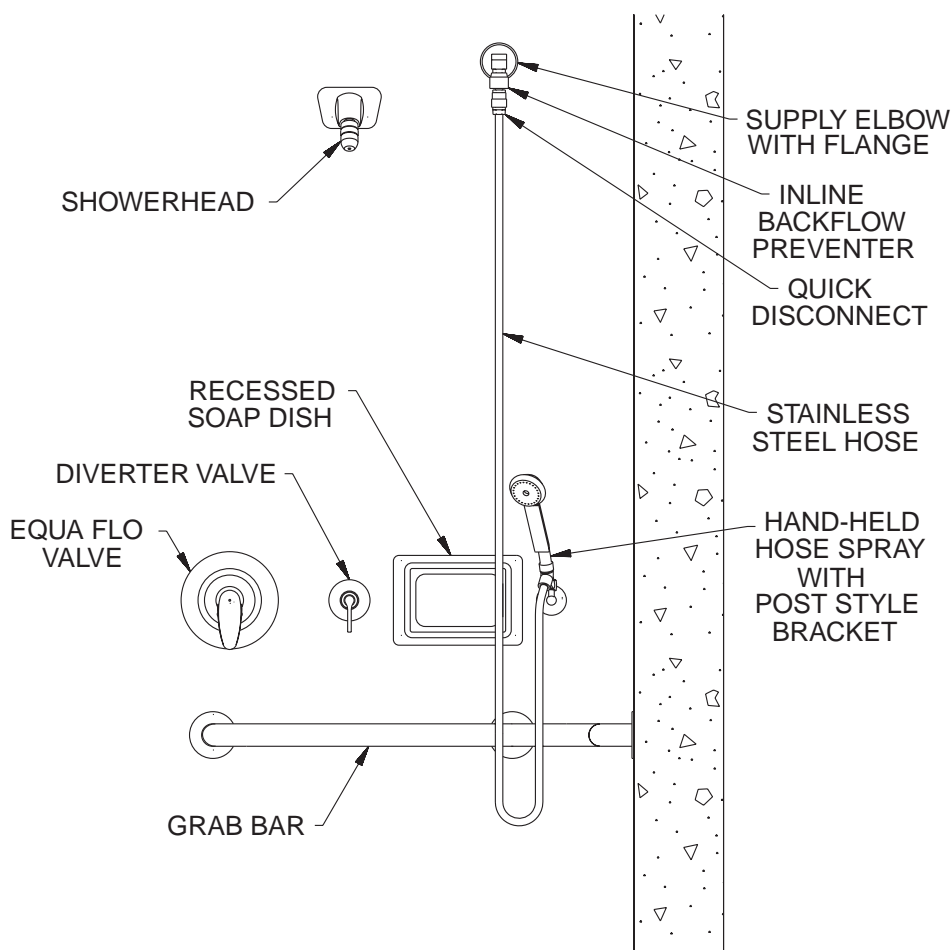
Bradley Corporation warrants to commercial and institutional purchasers only each unit free from defects in material and workmanship under normal use and service upon the following terms and conditions:

1. This warranty is limited to replacing or repairing, at our option, transportation charges prepaid by the purchaser, any Bradley unit or part thereof which our inspection shall show to have been defective within the limitations of this warranty.
2. The period during which In-Wall Shower components are warranted is one (1) year, measured from the date of our invoice.
3. This warranty does not cover installation or any other labor charges and does not apply to any units which have been damaged by accident, abuse, improper installation or improper maintenance.
4. The replacement or repair of defective units as stated in this warranty shall constitute the sole remedy of the purchaser and the sole liability of Bradley Corporation under this warranty. Bradley Corporation shall not otherwise be liable under any circumstances for incidental, consequential or indirect damages caused by defects in the repair or replacement thereof.
5. This warranty extends only to commercial and institutional purchasers and does not extend to any others, including consumer customers of commercial and institutional purchasers.
6. This warranty is in lieu of all other warranties, express or implied, including any implied warranty of merchantability or fitness for a particular purpose or otherwise.

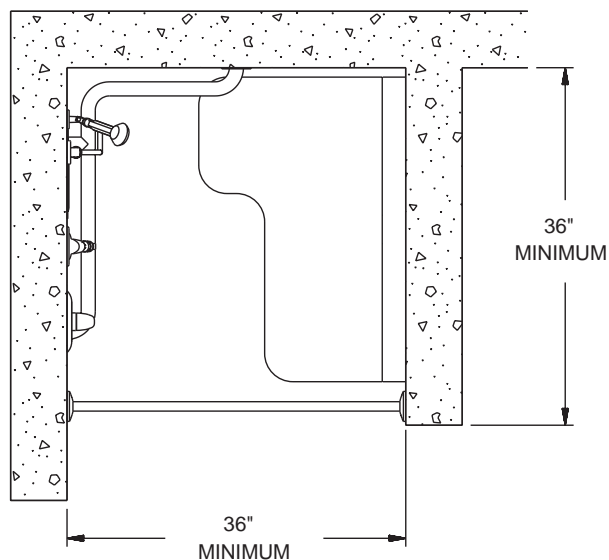
HN-300 Barrier-Free Components and Shower Stall Dimensions



IMPORTANT: Always check local codes for correct placement of components.



VALVE RIGHT/SEAT LEFT



VALVE LEFT/SEAT RIGHT

Installation Instructions



WARNING: This shower system may not protect the user from scalding when there is a failure of other temperature controlling devices elsewhere in the plumbing system.

Step 1: Rough-in piping for HN-300 Shower Components

NOTE: Flush supply lines before making connections.

1. Rough-in valve in location recommended in Figure 1. Refer to the Instruction Sheet supplied with the valve for particular installation information.
2. Install the diverter by first removing the escutcheon and handle from diverter valve. Remove screw from handle and unscrew valve hub (see Figure 2).
3. At dimensions shown in Figure 1, rough-in piping from valve to diverter valve, showerhead, and in-line backflow preventer elbow (piping supplied by installer) (see Figure 3).
4. If recessed soap dish is provided, rough-in a 7" x 4-1/4" rectangle in the wall (see Figure 1)
5. Finish wall as required and assemble escutcheon and handle on valve using appropriate hardware.
6. Replace handle and escutcheon on diverter valve and secure with screw provided (see Figure 2).

Installation Instructions *continued...***Rough-in piping for HN-300 Shower Components**

IMPORTANT: Always check local codes for correct placement of components.
California residents refer to Title 24.

NOTE: Install all components per local codes. Plumbing contractor is responsible for placing components to meet accessibility requirement codes. Conformity and conformance is the responsibility of the installer.

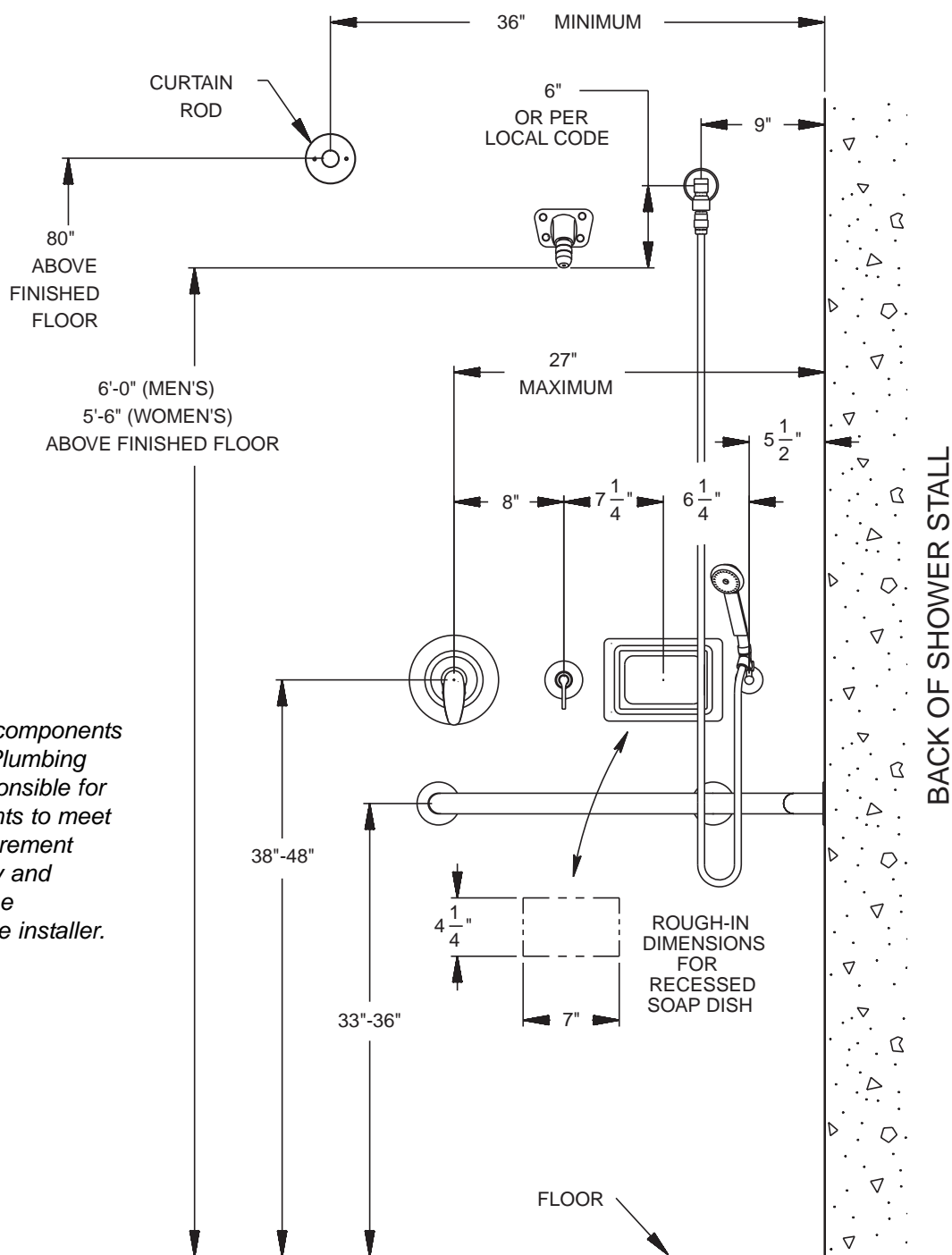


Figure 1

Installation Instructions *continued...*

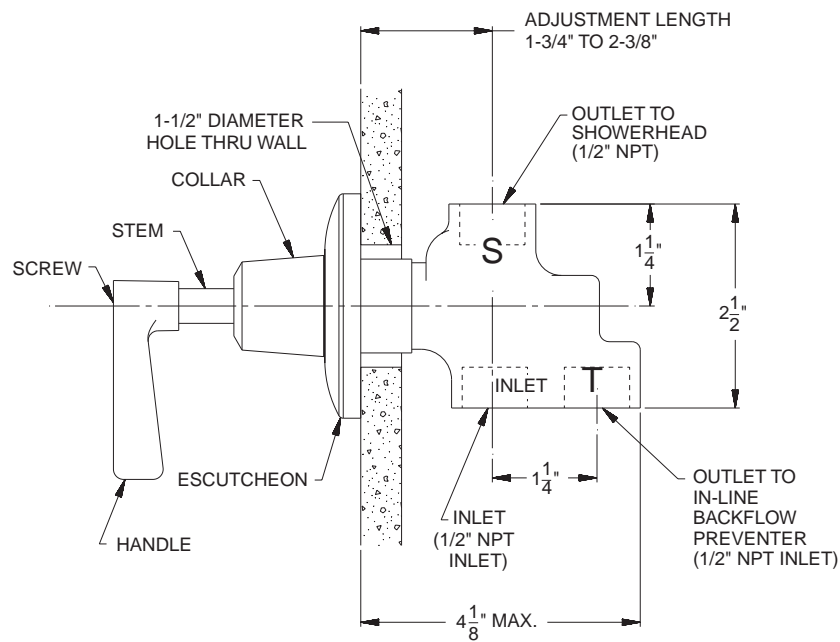


Figure 2

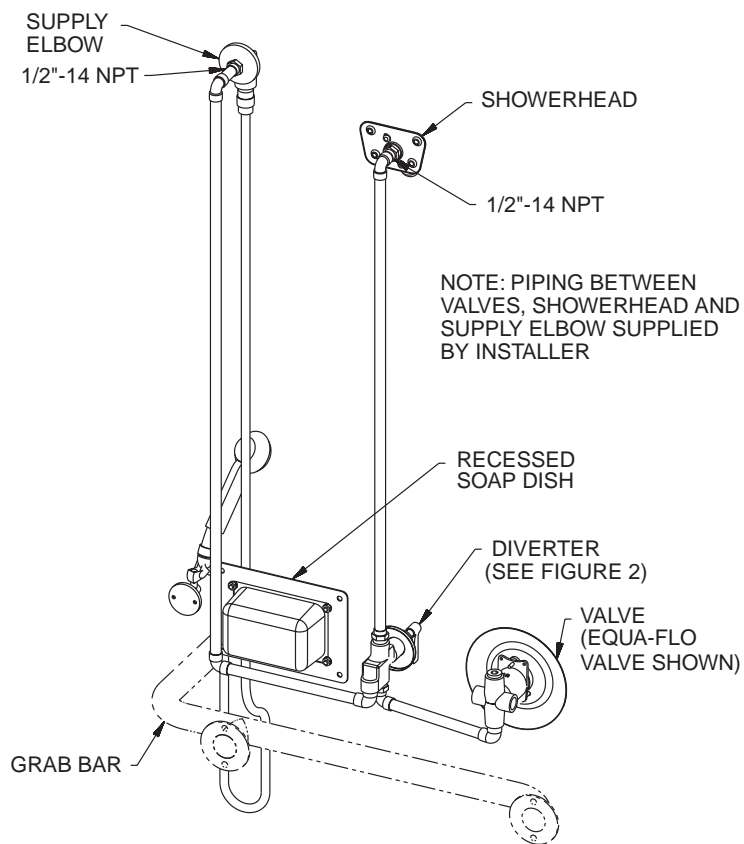


Figure 3

Installation Instructions *continued...*

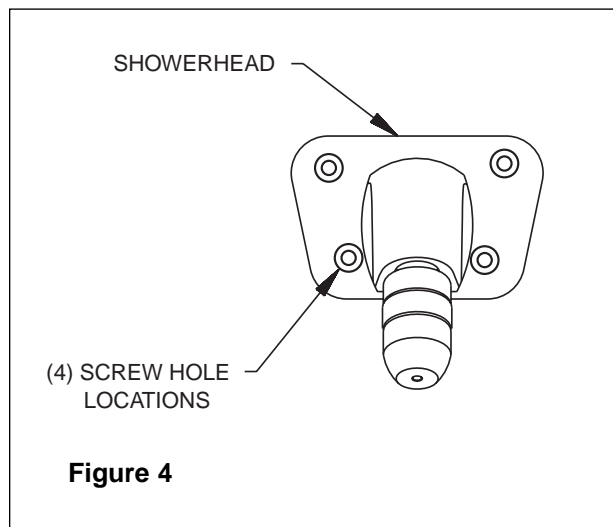
Step 2: Install showerhead

1. Thread showerhead onto supply piping.
2. Using showerhead as a template, mark four screw hole locations on wall.
3. Remove showerhead from piping.
4. Install wall anchors (supplied by installer) for 1/4"-20 x 1-1/4" flat socket head machine screws at four marked screw hole locations (see Figure 4).



IMPORTANT: It is the installer's responsibility to use the correct anchors for the given wall construction.

5. Thread showerhead onto the supply piping and secure showerhead to four wall anchors using 1/4"-20 x 1-1/4" flat socket head machine screws supplied.



Step 3: Install in-line backflow preventer and hose spray

1. Thread elbow with flange to supply piping.
2. Connect in-line backflow preventer, quick disconnect, and hand-held hose spray to elbow.

Step 4: Install hand-held hose bracket

1. Position bracket as shown in Figure 1.
2. Using bracket as a template, mark two screw hole locations on wall.
3. Install two wall anchors (supplied by installer) for #10-24 screws at two screw hole locations.



IMPORTANT: It is the installer's responsibility to use the correct anchors for the given wall construction.

4. Secure hose bracket to wall anchors using two #10-24 screws supplied.

Installation Instructions *continued...*

Step 5: Install recessed soap dish

1. Place recessed soap dish into 7" x 4-1/4" rectangular hole in wall.
2. Secure recessed soap dish to wall with four 1/4"-20 x 3/4" button head socket cap screws provided.

Step 6: Install grab bar

1. Position grab bar as shown in Figure 1.
2. Using grab bar flanges as a template, mark screw hole locations.
3. Install wall anchors (supplied by installer) for 1/4"-20 x 1-1/4" machine screws at six marked screw hole locations.

! IMPORTANT: It is the installer's responsibility to use the correct anchors for the given wall construction.

4. Mount grab bar to the six wall anchors using 1/4"-20 x 1-1/4 screws (supplied by installer) (or see Figure 5).

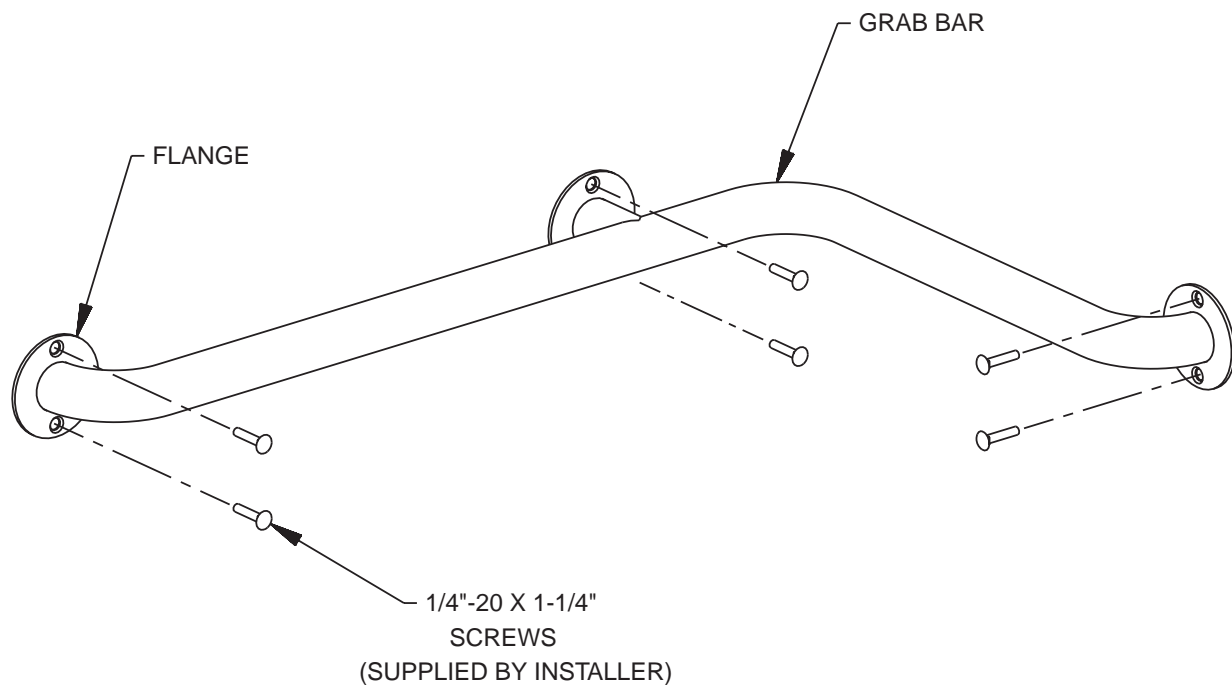


Figure 5

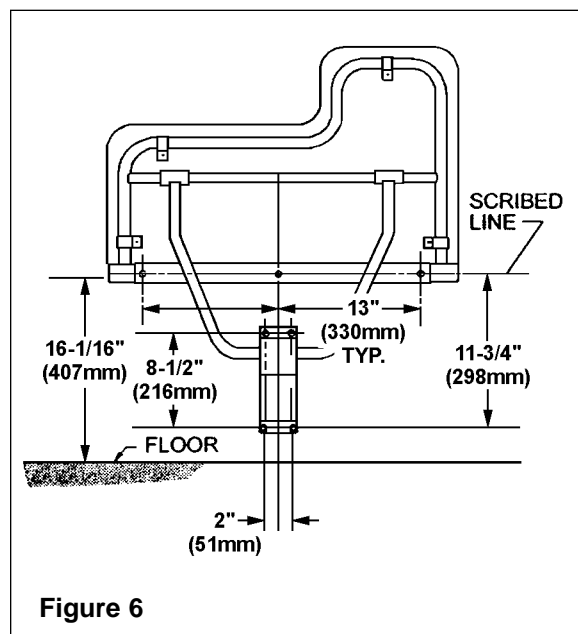
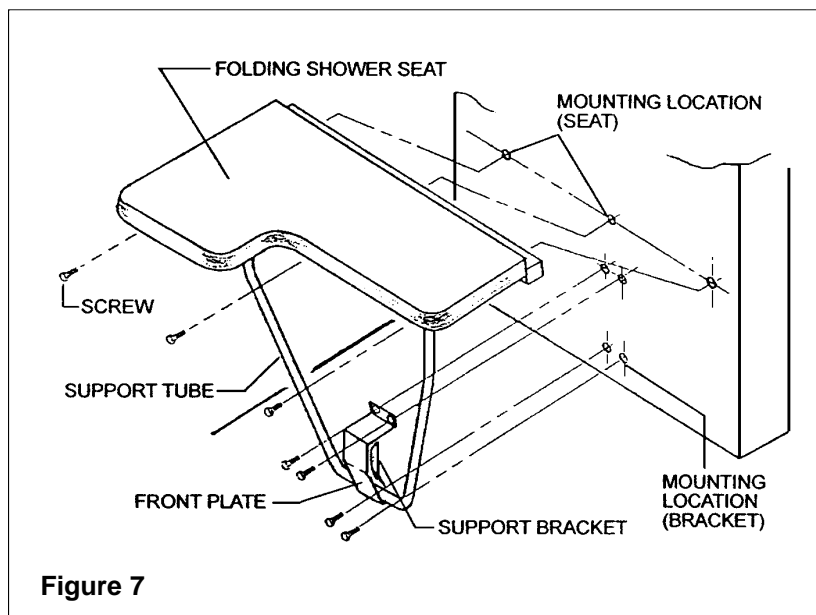
Installation Instructions *continued...***Step 7: Mount shower seat**

NOTE: All anchoring devices (supplied by installer) must be carefully selected to ensure adequate support for the shower seat, given the type of wall construction.

1. Measure and scribe a horizontal line 16-1/16" above finished floor (see Figure 6).
2. Position folding shower seat against wall with three mounting holes on seat centered on scribed line.
 - Using mounting holes on shower seat as a template, mark three mounting locations on wall.
3. Install appropriate anchors (supplied by installer) for 1/4" sheet metal screws in wall at three mounting locations.
4. Mount shower seat to wall with three 1/4" sheet metal screws (supplied) at anchored mounting locations.
 - Position seat support tube in support bracket as shown in Figure 7. Support tube should rest on bottom of front plate.

NOTE: When seat is properly installed, it should decline downward from back to front 2° to 3° for water drainage.

5. Place support bracket against wall and adjust support bracket vertically until shower seat is level in down position.
 - Using mounting holes on support bracket as a template, mark four mounting locations on wall.
6. Install appropriate anchors (supplied by installer) for 1/4" sheet metal screws in wall at four mounting locations.
7. Mount support bracket to wall with four 1/4" sheet metal screws (supplied) at anchored mounting locations.

**Figure 6****Figure 7**

Installation Instructions *continued...*

Step 8: Install curtain rod

1. Measure and cut stainless steel curtain rod to fit shower stall opening.
2. Mount one shower rod flange 80" from floor as close to opening of shower stall as possible with two #10-13 x 2" Phillips oval screws provided (see Figure 1).
 - Insert one end of shower rod into flange.
 - Slide other shower rod flange onto shower rod.
3. Position shower rod and flange at same dimensions as first flange but on opposite side of shower stall opening.
4. Secure flange to wall with two #10-13 x 2" Phillips head screws provided.
5. Install ten hooks onto curtain rod and hang curtain on rod.

Cleaning Instructions



IMPORTANT: Cleanliness is of utmost importance. Do not permit salty solutions to evaporate and dry on stainless steel. Never use ordinary steel wool or steel brushes on stainless steel. Always use stainless steel wool or stainless steel brushes.

1. Remove ordinary deposits of dirt and grease with soap and water. Whenever possible, the metal should be thoroughly rinsed and dried after washing.
2. Use stainless steel polishing powder to get rid of tightly adhering deposits.
3. Look for the source of the rust in some iron or steel not actually a part of the stainless steel structure. Sometimes the appearance of rust streaks on stainless steel leads to the belief that the stainless steel is rusting. A steel nail or screw may be the cause of the trouble.
4. If the showerhead delivers an uneven spray, remove the showerhead from the unit, disassemble, and remove foreign matter.
5. Reassemble showerhead and reinstall into unit.

Shower Seat Repair Parts

